

# 2025

## National Ability Supports System (NASS)

People engaging with disability services

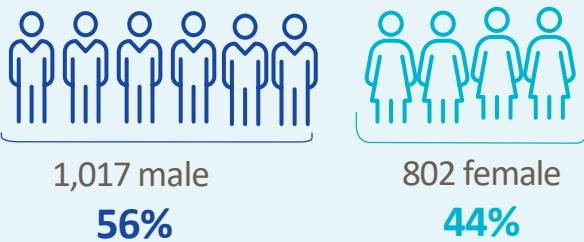


HRB StatLink Series 31

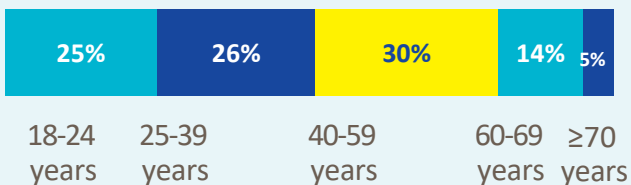
### IHA- Waterford and Wexford

**1,819** adult records reviewed

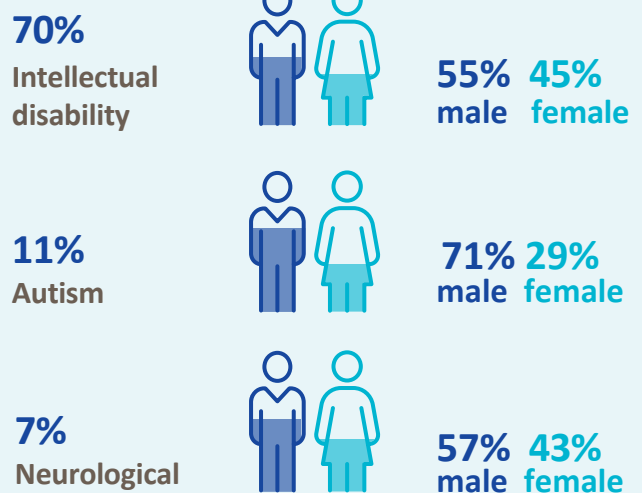
#### Demographics



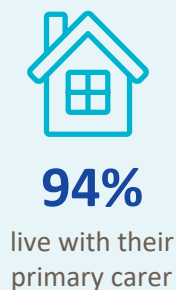
#### Age groups



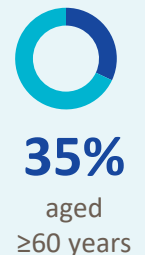
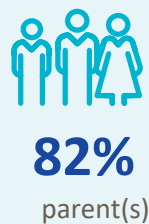
#### Most common primary disability



#### Primary carer



#### Of the primary carers:



## Current services received

### Adults and children \*



**444**

lived in a residential setting



**475**

received home support



**14**

accessed a personal assistant



**48**

accessed day respite



**422**

availed of overnight respite  
6,715 nights

### Adults only



**1,453**

adults accessed day services



**1,036**

adults received support services

## New services required

### Adults and children \*



**92**

residential places required



**71**

home support places required



~

personal assistant services required



**103**

people require overnight respite

### Adults only

#### Main support services required:



**132**

adults require support services



Occupational Therapy



Speech and Language Therapy



Psychiatry

\* Children included are those who received residential, respite, home support and/or specialised support services from dedicated organisations. Information on the multidisciplinary supports received from Children's Disability Network Teams was not included.

~ In order to protect against the risk of indirect identification of individuals, values less than 5 have been suppressed.