

IHA- Sligo Leitrim

 **1,211** adult records reviewed

Demographics

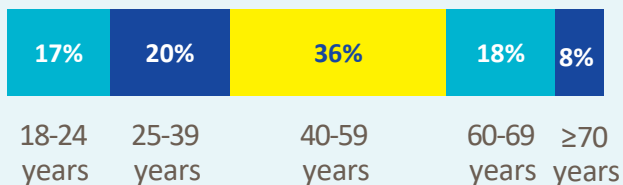


577 male
48%



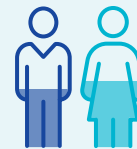
634 female
52%

Age groups



Most common primary disability

50%
Intellectual disability



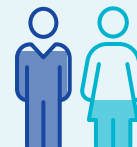
46% male
54% female

24%
Neurological



39% male
61% female

12%
Autism



74% male
26% female

Primary carer



442

people reported having a primary carer



91%

live with their primary carer

Of the primary carers:



70%

parent(s)



15%

wife/husband /partner



11%

siblings



37%

aged ≥60 years

Current services received

Adults and children*



332

lived in a residential setting



302

received home support



133

accessed a personal assistant



28

accessed day respite



133

availed of overnight respite
3,952 nights

Adults only



670

adults accessed day services



1,058

adults received support services

New services required

Adults and children*



53

residential places required



16

home support places required



~

personal assistant services required



25

people require overnight respite

Adults only



75

adults require support services

Main support services required:



Neuro psychology



Speech and Language Therapy



Clinical psychology

* Children included are those who received residential, respite, home support and/or specialised support services from dedicated organisations. Information on the multidisciplinary supports received from Children's Disability Network Teams was not included.

~ In order to protect against the risk of indirect identification of individuals, values less than 5 have been suppressed.