

# 2025

## National Ability Supports System (NASS)

People engaging with disability services

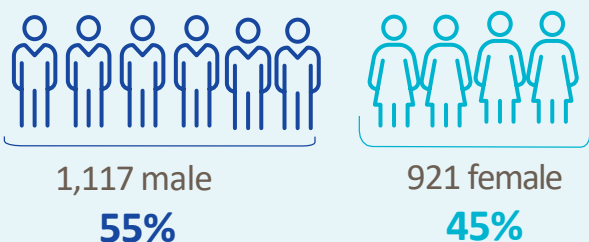


HRB StatLink Series 31

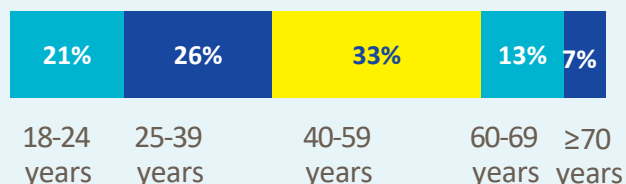
### IHA- Midlands

**2,038** adult records reviewed

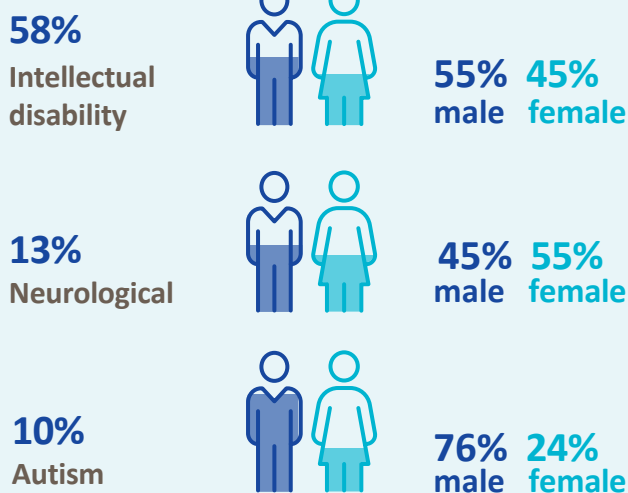
#### Demographics



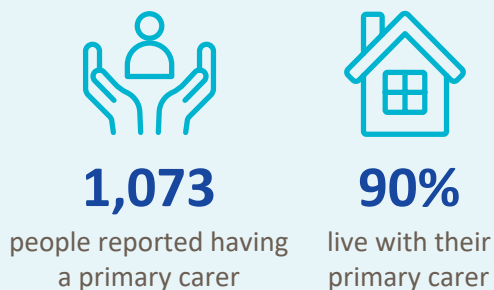
#### Age groups



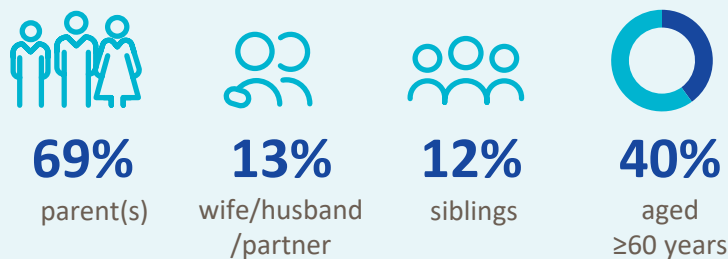
#### Most common primary disability



#### Primary carer



#### Of the primary carers:



## Current services received

### Adults and children\*



**576**

lived in a residential setting



**245**

received home support



**181**

accessed a personal assistant



**316**

accessed day respite



**422**

availed of overnight respite  
12,995 nights

### Adults only



**1,179**

adults accessed day services



**998**

adults received support services

## New services required

### Adults and children\*



**131**

residential places required



**36**

home support places required



**13**

personal assistant services required



**58**

people require overnight respite

### Adults only

#### Main support services required:



**156**

adults require support services



Occupational Therapy



Speech and Language Therapy



Chiropody

\* Children included are those who received residential, respite, home support and/or specialised support services from dedicated organisations. Information on the multidisciplinary supports received from Children's Disability Network Teams was not included.