

2025

National Ability Supports System (NASS)

People engaging with disability services

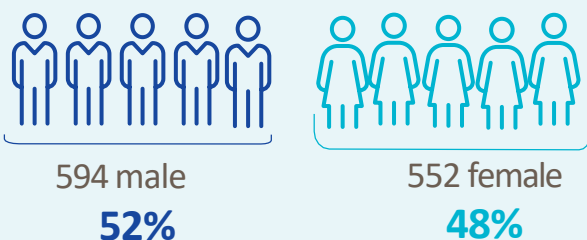


HRB StatLink Series 31

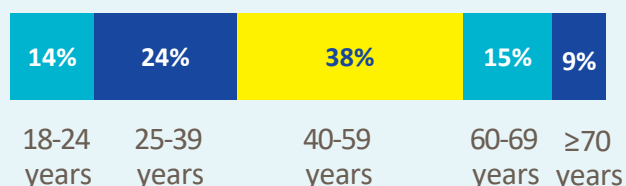
IHA- Mayo

 **1,146** adult records reviewed

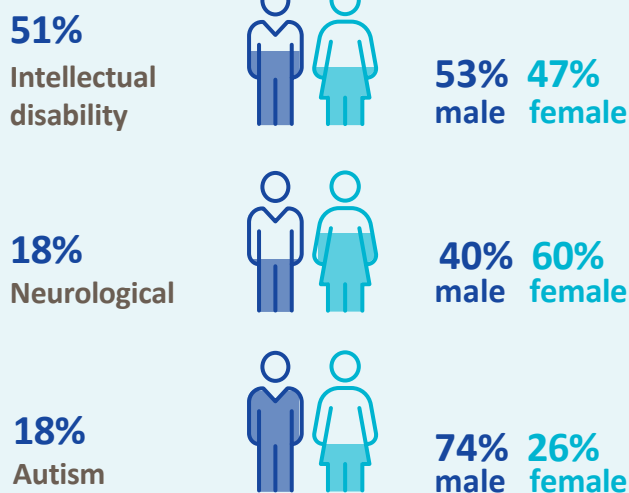
Demographics



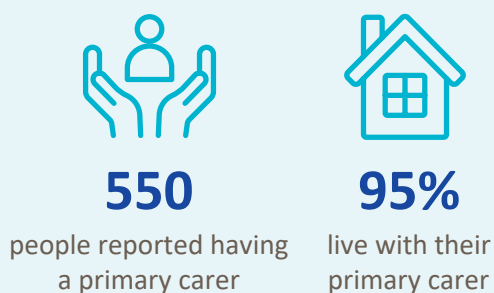
Age groups



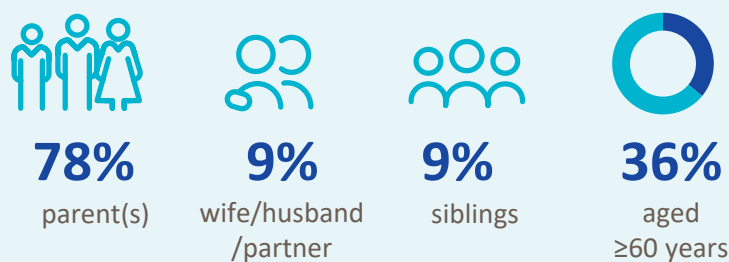
Most common primary disability



Primary carer



Of the primary carers:



Current services received

Adults and children*



248

lived in a residential setting



36

received home support



250

accessed a personal assistant



26

accessed day respite



119

availed of overnight respite
3,276 nights

Adults only



636

adults accessed day services



715

adults received support services

New services required

Adults and children*



48

residential places required



10

home support places required



20

personal assistant services required



38

people require overnight respite

Adults only

Main support services required:



106

adults require support services



Physiotherapy



Occupational Therapy



Social Work

* Children included are those who received residential, respite, home support and/or specialised support services from dedicated organisations. Information on the multidisciplinary supports received from Children's Disability Network Teams was not included.