

# 2025

## National Ability Supports System (NASS)

People engaging with disability services

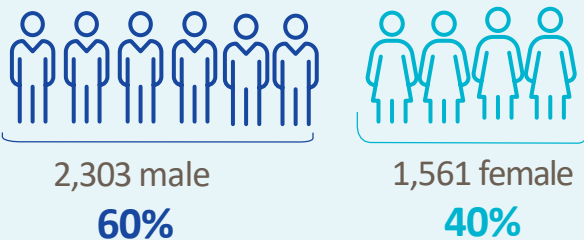


HRB StatLink Series 31

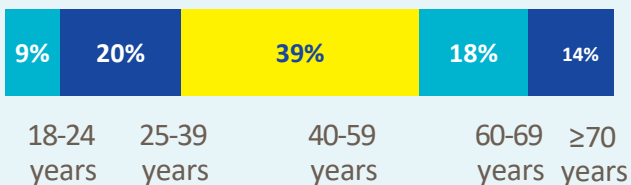
### IHA- Dublin South and Wicklow

 **3,864** adult records reviewed

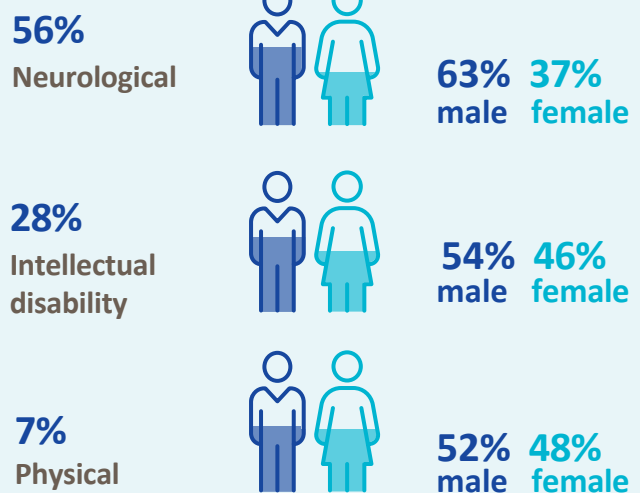
#### Demographics



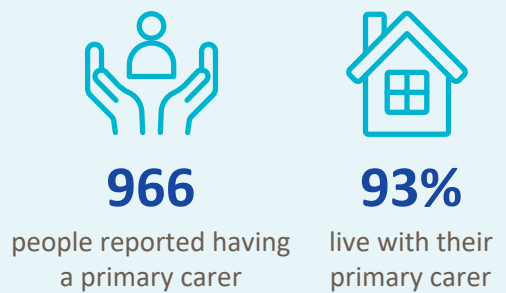
#### Age groups



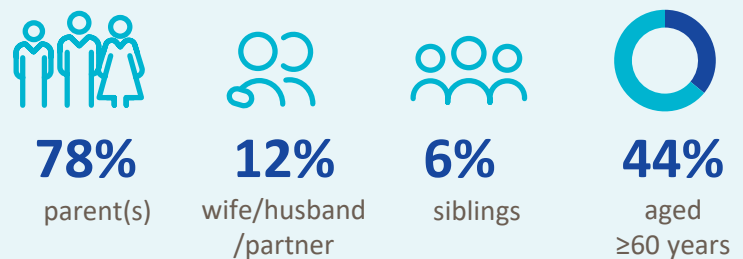
#### Most common primary disability



#### Primary carer



#### Of the primary carers:



## Current services received

### Adults and children\*



**442**

lived in a residential setting



**607**

received home support



**104**

accessed a personal assistant



**238**

accessed day respite



**428**

availed of overnight respite  
10,634 nights

### Adults only



**1,183**

adults accessed day services



**2,857**

adults received support services

## New services required

### Adults and children\*



**342**

residential places required



**160**

home support places required



**30**

personal assistant services required



**126**

people require overnight respite

### Adults only

#### Main support services required:



**439**

adults require support services



Occupational Therapy



Physiotherapy



Clinical Psychology

\* Children included are those who received residential, respite, home support and/or specialised support services from dedicated organisations. Information on the multidisciplinary supports received from Children's Disability Network Teams was not included.