

2025

National Ability Supports System (NASS)

People engaging with disability services



HRB StatLink Series 31

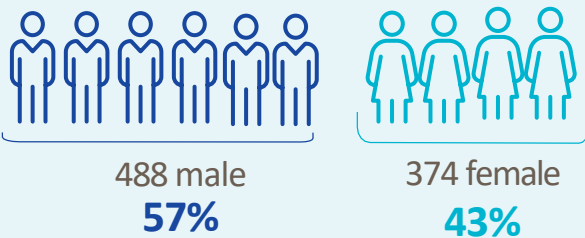
IHA-Dublin South West



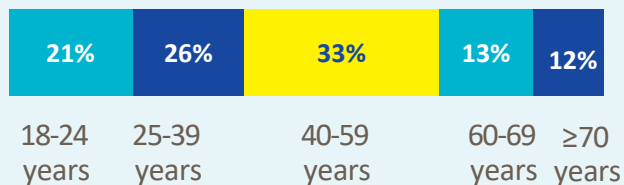
862

 adult records reviewed

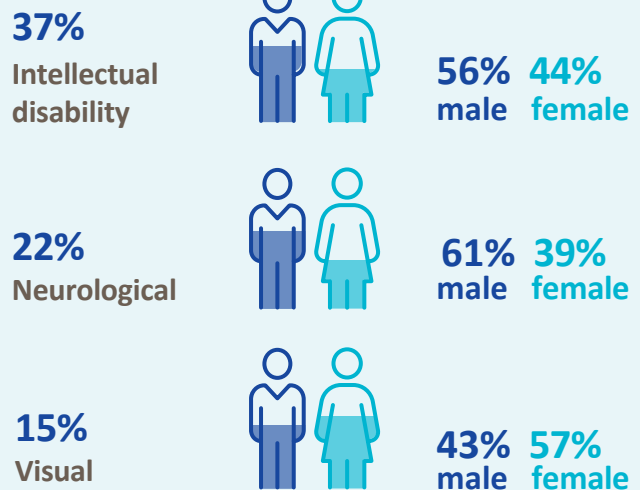
Demographics



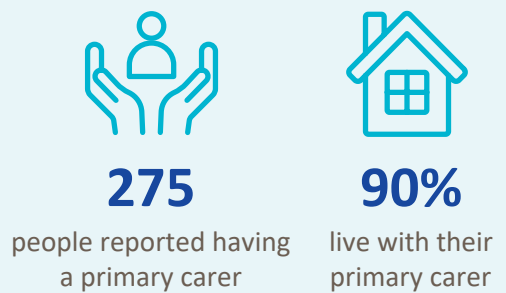
Age groups



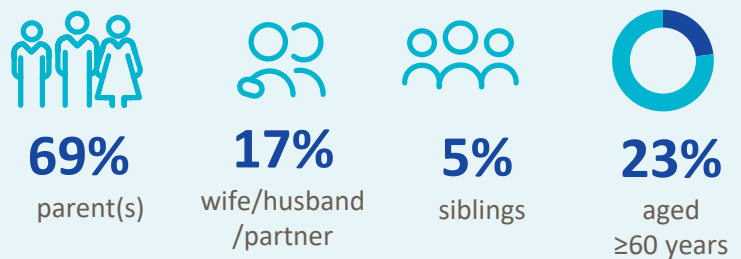
Most common primary disability



Primary carer



Of the primary carers:



Current services received

Adults and children*



266

lived in a residential setting



133

received home support



12

accessed a personal assistant



74

accessed day respite



112

availed of overnight respite
2,629 nights

Adults only



339

adults accessed day services



518

adults received support services

New services required

Adults and children*



13

residential places required



~

home support places required



7

personal assistant services required



21

people require overnight respite

Adults only



102

adults require support services

Main support services required:



Occupational Therapy



Dietetics



Psychiatry

* Children included are those who received residential, respite, home support and/or specialised support services from dedicated organisations. Information on the multidisciplinary supports received from Children's Disability Network Teams was not included.

~ In order to protect against the risk of indirect identification of individuals, values less than 5 have been suppressed.