

# 2025

## National Ability Supports System (NASS)

People engaging with disability services

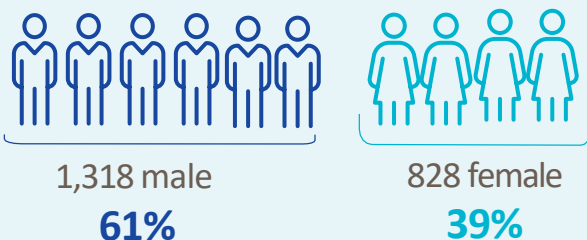


HRB StatLink Series 31

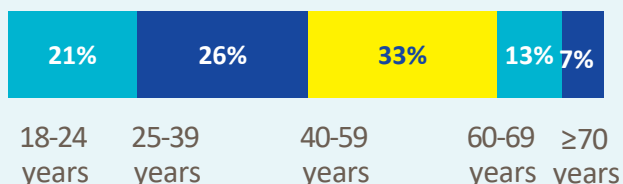
### IHA-Dublin South City and West

**2,146** adult records reviewed

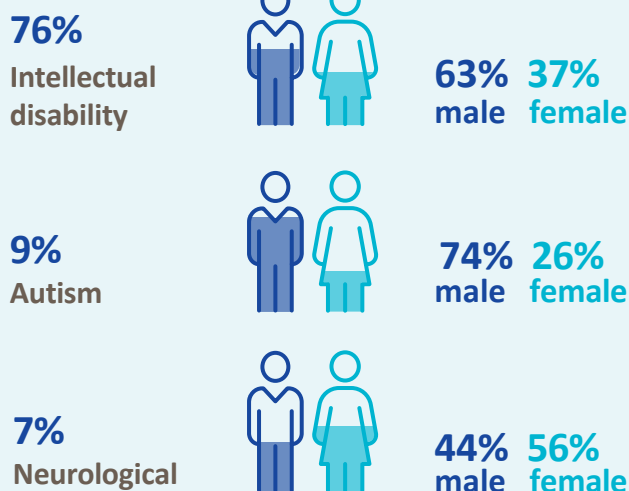
#### Demographics



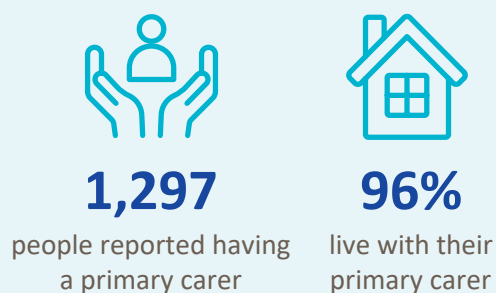
#### Age groups



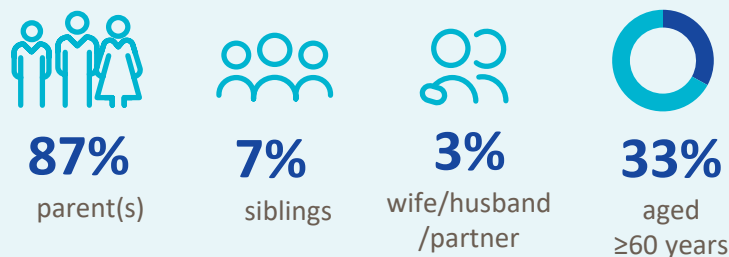
#### Most common primary disability



#### Primary carer



#### Of the primary carers:



## Current services received

### Adults and children\*



**517**

lived in a residential setting



**404**

received home support



**52**

accessed a personal assistant



**44**

accessed day respite



**631**

availed of overnight respite  
16,521 nights

### Adults only



**1,686**

adults accessed day services



**1,237**

adults received support services

## New services required

### Adults and children\*



**322**

residential places required



**40**

home support places required



**22**

personal assistant services required



**130**

people require overnight respite

### Adults only

#### Main support services required:



**514**

adults require support services



Clinical psychology



Occupational Therapy



Dietetics

\* Children included are those who received residential, respite, home support and/or specialised support services from dedicated organisations. Information on the multidisciplinary supports received from Children's Disability Network Teams was not included.