

# 2025

## National Ability Supports System (NASS)

### People engaging with disability services

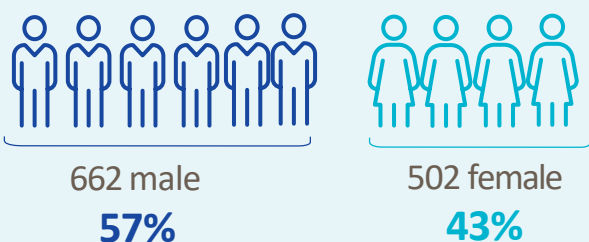


HRB StatLink Series 31

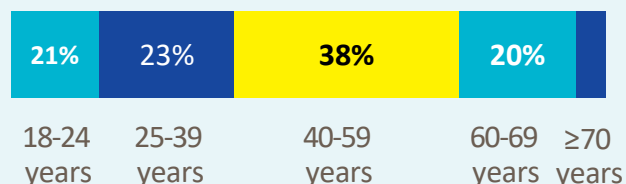
## IHA – Dublin North County

# 1,164 adult records reviewed

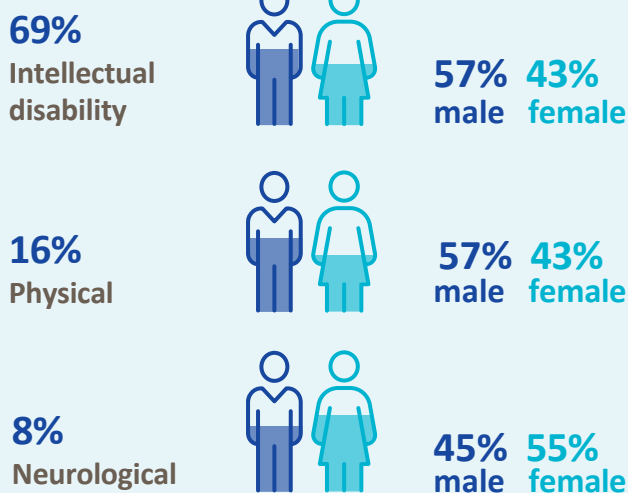
### Demographics



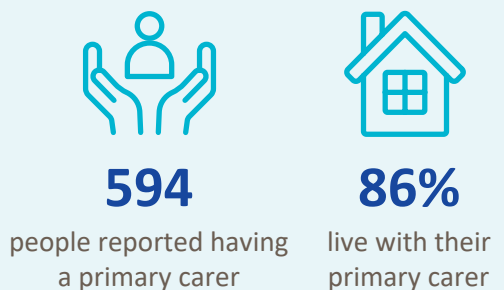
### Age groups



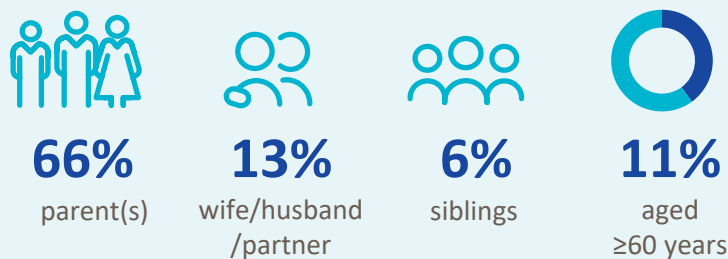
### Most common primary disability



### Primary carer



### Of the primary carers:



## Current services received

### Adults and children \*



**486**

lived in a residential setting



**396**

received home support



**5**

accessed a personal assistant



**143**

accessed day respite



**311**

availed of overnight respite  
7,998 nights

### Adults only



**792**

adults accessed day services



**652**

adults received support services

## New services required

### Adults and children \*



**54**

residential places required



~

home support places required



~

personal assistant services required



**19**

people require overnight respite

### Adults only

#### Main support services required:



**153**

adults require support services



Physiotherapy



Occupational Therapy



Dietetics

\* Children included are those who received residential, respite, home support and/or specialised support services from dedicated organisations. Information on the multidisciplinary supports received from Children's Disability Network Teams was not included

~ In order to protect against the risk of indirect identification of individuals, values less than 5 have been suppressed..