

# 2025

## National Ability Supports System (NASS)

People engaging with disability services

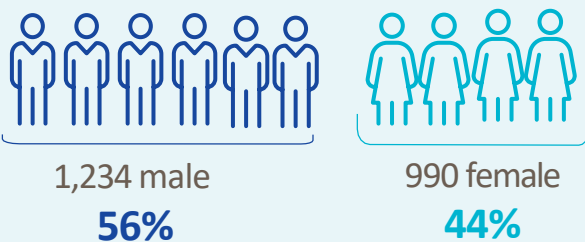


HRB StatLink Series 31

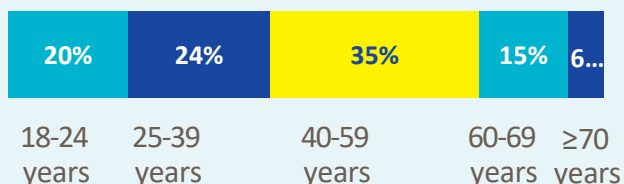
### IHA- Carlow, Kilkenny and Tipperary South

**2,224** adult records reviewed

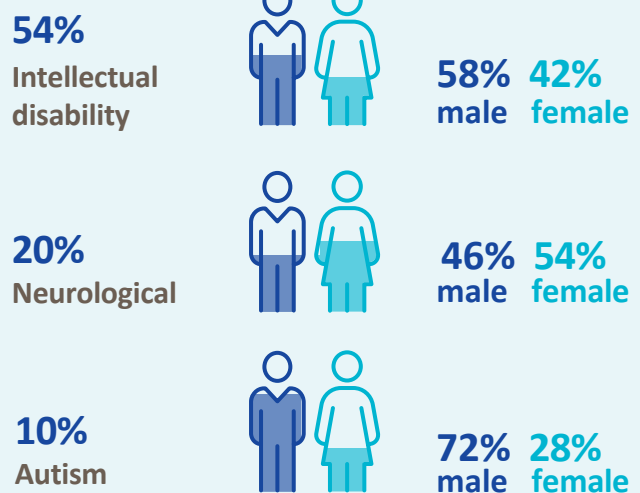
#### Demographics



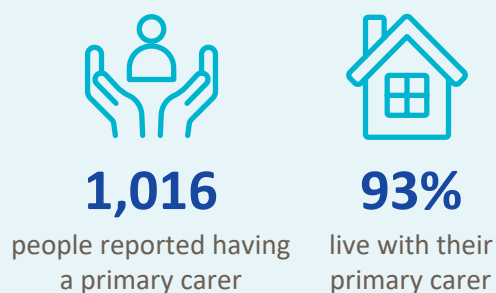
#### Age groups



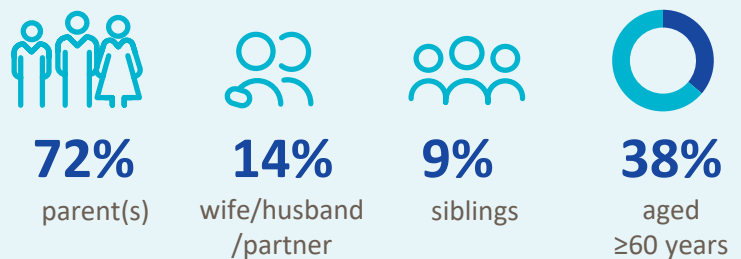
#### Most common primary disability



#### Primary carer



#### Of the primary carers:



## Current services received

### Adults and children\*



**556**

lived in a residential setting



**444**

received home support



**53**

accessed a personal assistant



**49**

accessed day respite



**267**

availed of overnight respite  
3,441 nights

### Adults only



**1,385**

adults accessed day services



**1,028**

adults received support services

## New services required

### Adults and children\*



**98**

residential places required



**42**

home support places required



**12**

personal assistant services required



**140**

people require overnight respite

### Adults only

#### Main support services required:



**318**

adults require support services



Chiroprody



Dentistry/  
Orthodontics



Occupational  
Therapy

\* Children included are those who received residential, respite, home support and/or specialised support services from dedicated organisations. Information on the multidisciplinary supports received from Children's Disability Network Teams was not included.