

2025

National Ability Supports System (NASS)

People engaging with disability services

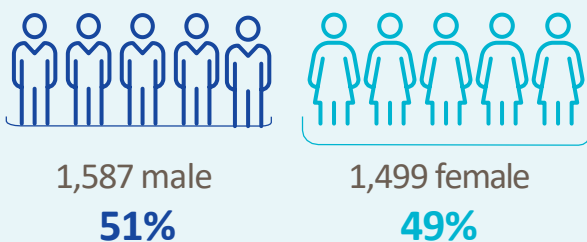


HRB StatLink Series 31

HSE Mid West

3,086 adult records reviewed

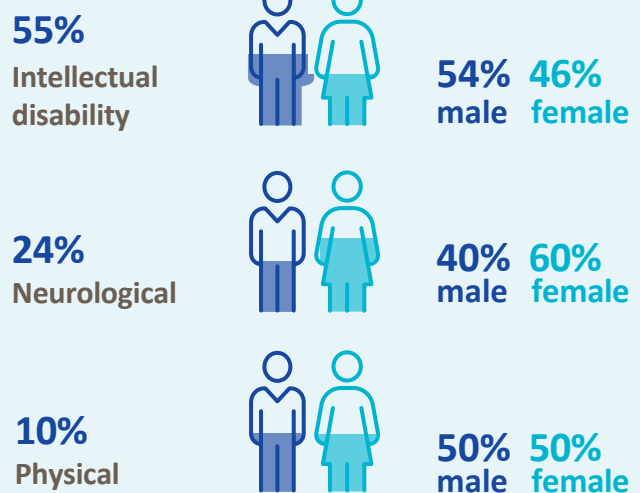
Demographics



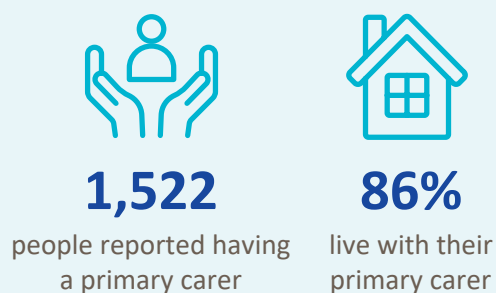
Age groups



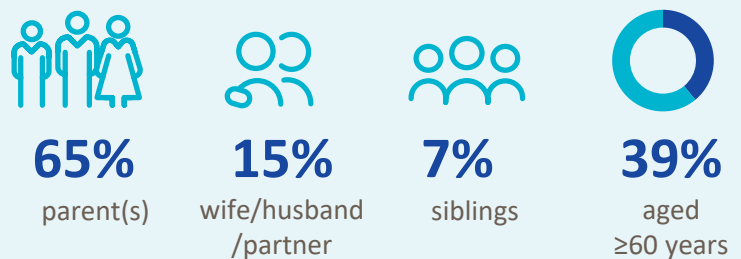
Most common primary disability



Primary carer



Of the primary carers:



Current services received

Adults and children *



770

lived in a residential setting



345

received home support



393

accessed a personal assistant



201

accessed day respite



441

availed of overnight respite
10,286 nights

Adults only



1,931

adults accessed day services



1,752

adults received support services

New services required

Adults and children *



102

residential places required



20

home support places required



13

personal assistant services required



63

people require overnight respite



281

people require a day service *

* Information provided by the HSE National Day Service Database.

Adults only

Main support services required:



224

adults require support services



Psychiatry



Vision communication



Speech and Language Therapy

* Children included are those who received residential, respite, home support and/or specialised support services from dedicated organisations. Information on the multidisciplinary supports received from Children's Disability Network Teams was not included.