

# 2025

## National Ability Supports System (NASS)

People engaging with disability services

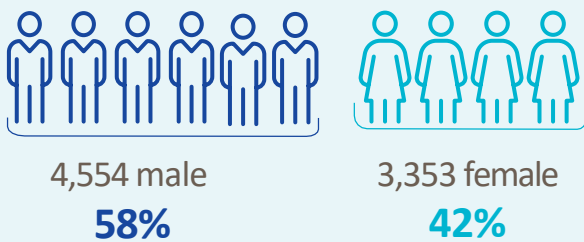


HRB StatLink Series 31

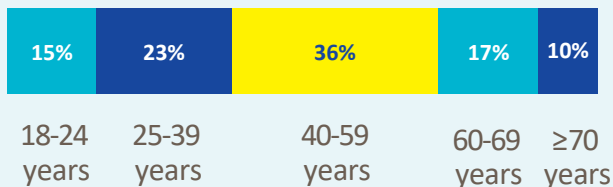
### HSE Dublin and South East

**7,907** adult records reviewed

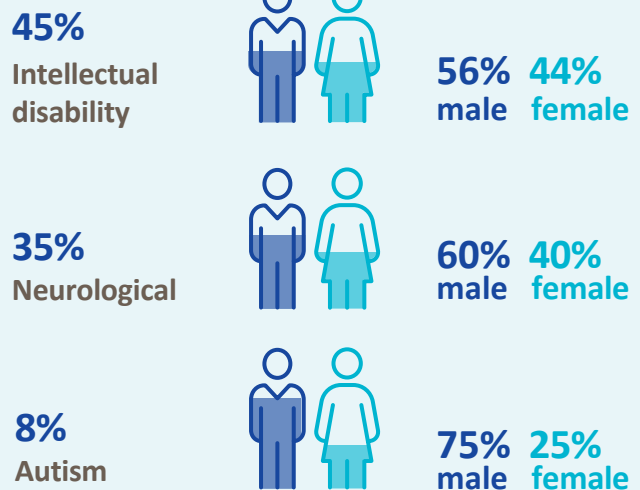
#### Demographics



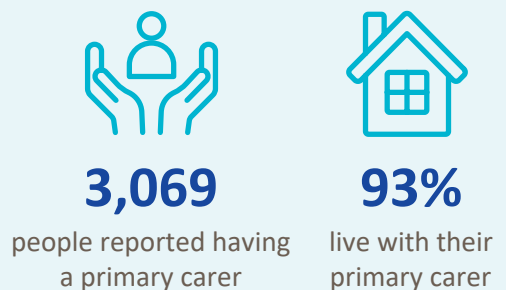
#### Age groups



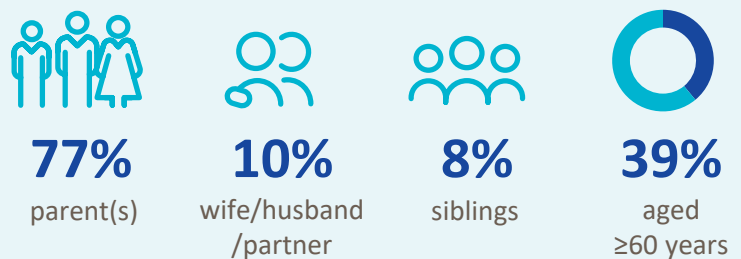
#### Most common primary disability



#### Primary carer



#### Of the primary carers:



## Current services received

### Adults and children\*



**1,442**

lived in a residential setting



**1,526**

received home support



**171**

accessed a personal assistant



**335**

accessed day respite



**1,117**

availed of overnight respite  
20,790 nights

### Adults only



**4,021**

adults accessed day services



**4,921**

adults received support services

## New services required

### Adults and children\*



**532**

residential places required



**273**

home support places required



**45**

personal assistant services required



**369**

people require overnight respite



**652**

people require a day service\*

\* Information provided by the HSE National Day Service Database.

### Adults only



**889**

adults require support services

#### Main support services required:



Occupational Therapy



Physiotherapy



Speech and Language Therapy

\* Children included are those who received residential, respite, home support and/or specialised support services from dedicated organisations. Information on the multidisciplinary supports received from Children's Disability Network Teams was not included.