

2025

National Ability Supports System (NASS)

People engaging with disability services

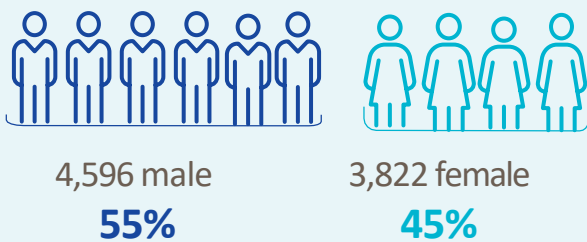


HRB StatLink Series 31

HSE Dublin and North East

8,418 adult records reviewed

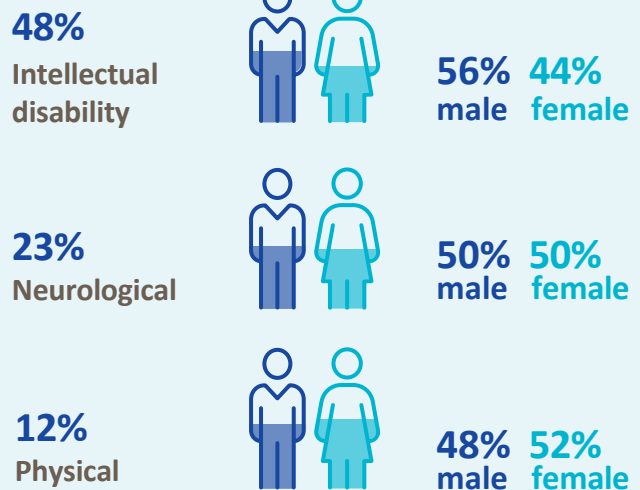
Demographics



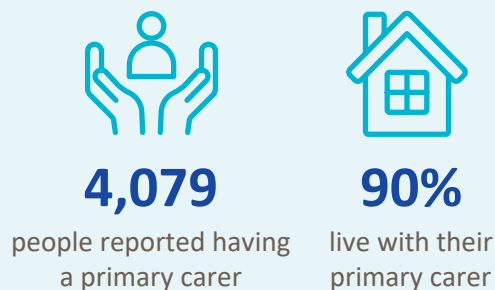
Age groups



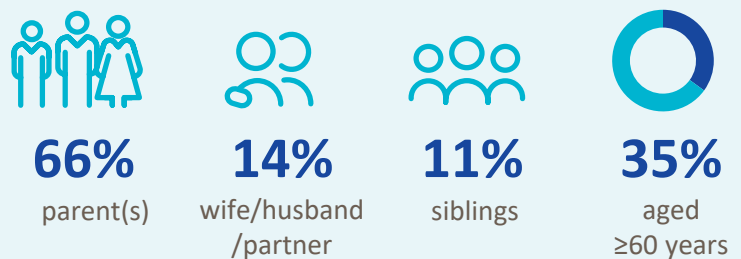
Most common primary disability



Primary carer



Of the primary carers:



Current services received

Adults and children *



2,013

lived in a residential setting



2,211

received home support



97

accessed a personal assistant



632

accessed day respite



1,637

availed of overnight respite
36,178 nights

Adults only



4,233

adults accessed day services



5,428

adults received support services

New services required

Adults and children *



431

residential places required



155

home support places required



17

personal assistant services required



362

people require overnight respite



648

people require a day service *

* Information provided by the HSE National Day Service Database.

Adults only

Main support services required:



1,418

adults require support services



Physiotherapy



Occupational Therapy



Speech and Language Therapy

* Children included are those who received residential, respite, home support and/or specialised support services from dedicated organisations. Information on the multidisciplinary supports received from Children's Disability Network Teams was not included.