

2025

National Ability Supports System (NASS)

People engaging with disability services

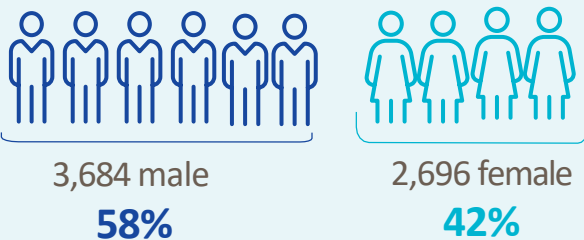


HRB StatLink Series 31

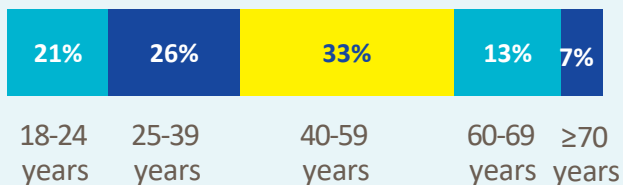
HSE Dublin and Midlands

6,380 adult records reviewed

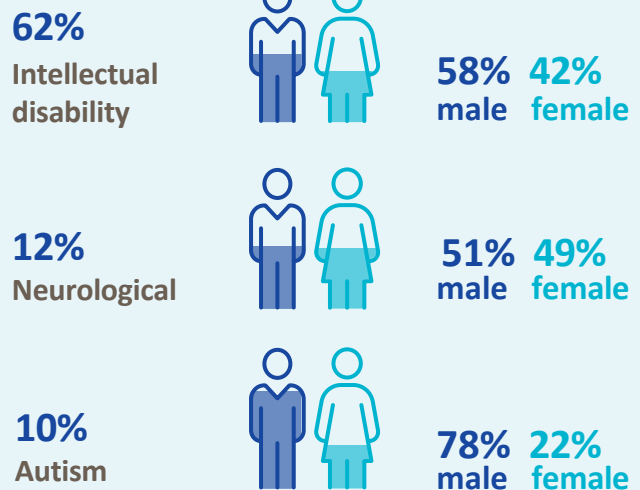
Demographics



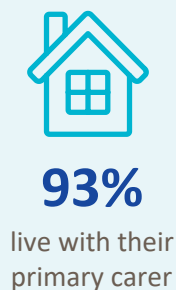
Age groups



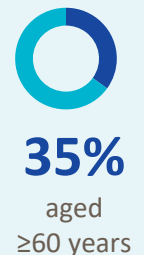
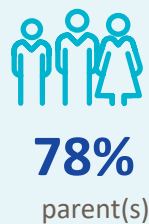
Most common primary disability



Primary carer



Of the primary carers:



Current services received

Adults and children *



1,733

lived in a residential setting



1,061

received home support



301

accessed a personal assistant



480

accessed day respite



1,413

availed of overnight respite
38,243 nights

Adults only



3,970

adults accessed day services



3,441

adults received support services

New services required

Adults and children *



471

residential places required



86

home support places required



46

personal assistant services required



215

people require overnight respite



573

people require a day service *

* Information provided by the HSE National Day Service Database.

Adults only

Main support services required:



967

adults require support services



Clinical psychology



Occupational Therapy



Speech and Language Therapy

* Children included are those who received residential, respite, home support and/or specialised support services from dedicated organisations. Information on the multidisciplinary supports received from Children's Disability Network Teams was not included.