

# 2024

## National Psychiatric Inpatient Reporting System (NPIRS)

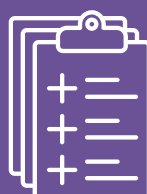
**HRB** Health Research Board

HRB StatLink Series 26

HSE Dublin and South East

Adult Units

**3,071**  
admissions

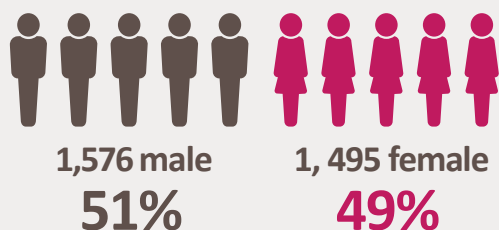


**35%** first admissions

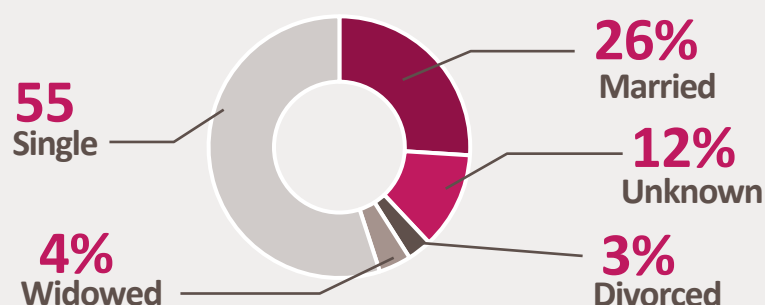
**65%** readmissions

### Demographics

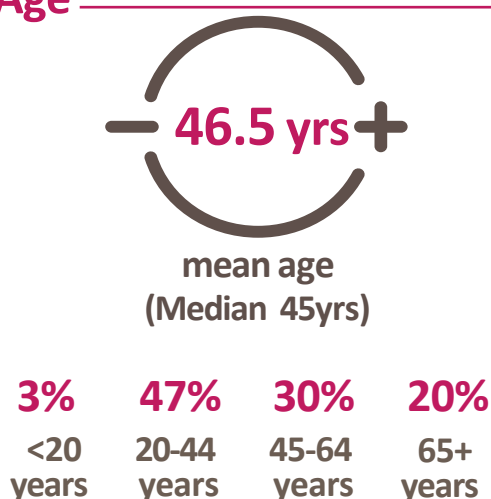
#### Sex



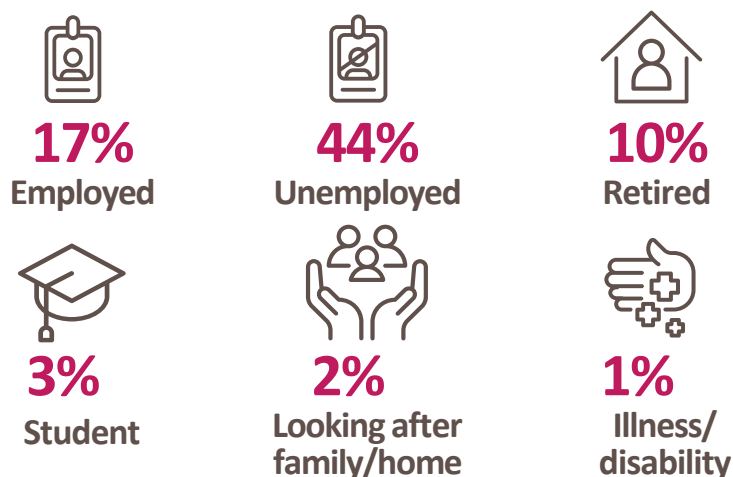
#### Marital status



#### Age



#### Employment status



#### No fixed abode



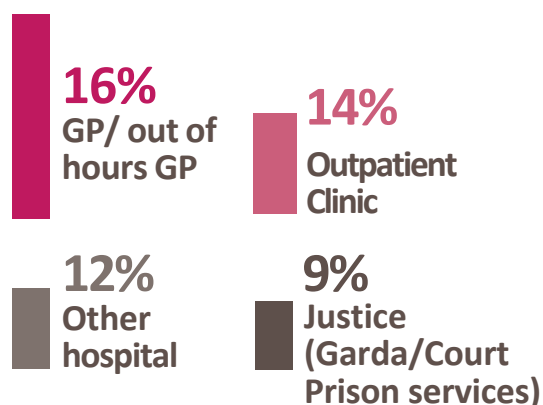
#### Main ethnic groups



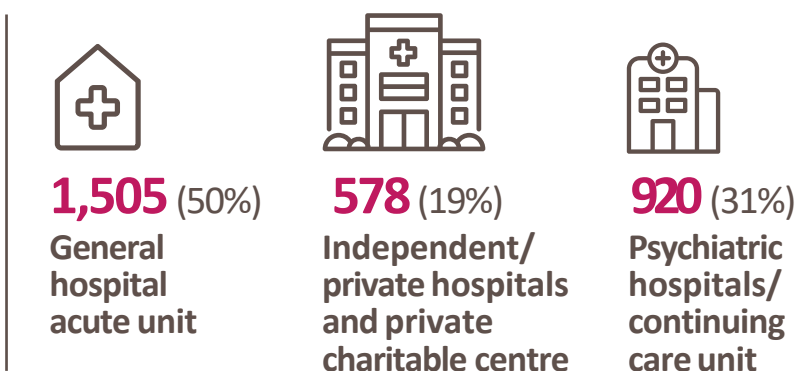
## Most common primary admission diagnosis

<b>826</b> (27%) Depressive Disorders	<b>572</b> (19%) Schizophrenia	<b>281</b> (9%) Bipolar Disorder	<b>233</b> (8%) Personality Disorder	<b>208</b> (7%) Anxiety/ fear-related/ stress/OCD
--	-----------------------------------	-------------------------------------	---	--

## Main referral source

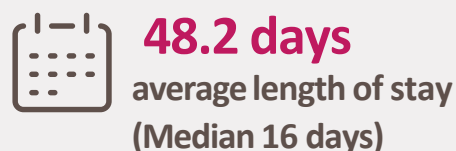


## Hospital type



## Discharges and deaths

**2,972**



## Discharged to



## Inpatient bed days

