

2024

National Ability Supports System (NASS)

People engaging with
disability services

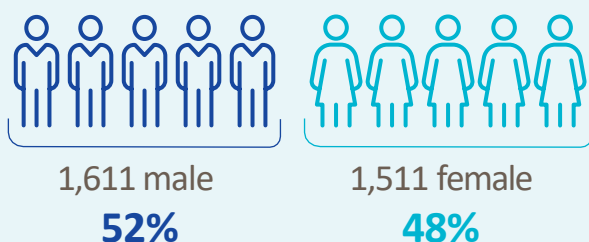
HRB Health
Research
Board

HRB StatLink Series 24

HSE Mid West

 **3,122** adult records reviewed

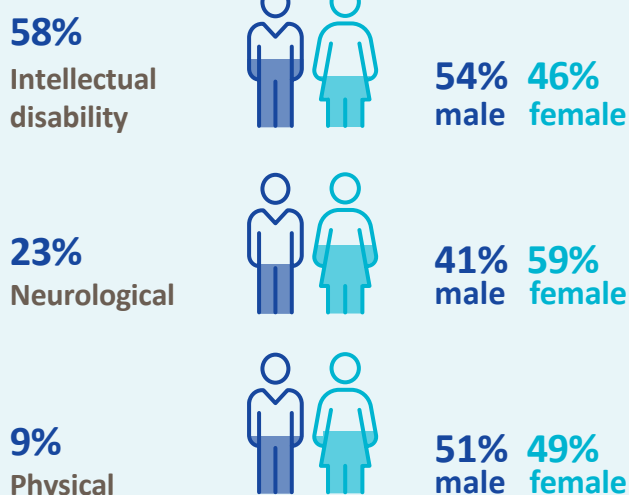
Demographics



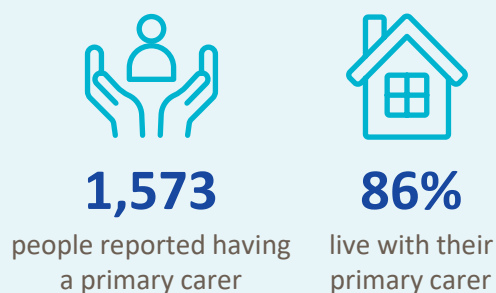
Age groups



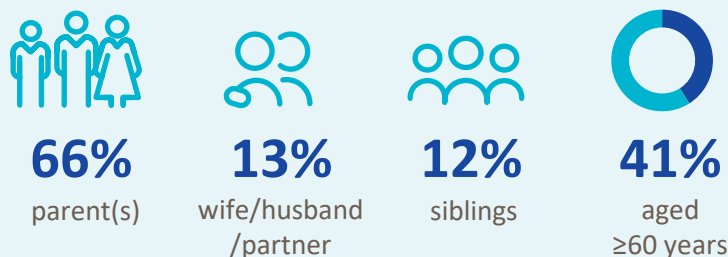
Most common primary disability



Primary carer



Of the primary carers:



Current services received

Adults and children*



785

lived in a
residential setting



325

received home
support



367

accessed a
personal assistant



186

accessed
day respite



421

availed of
overnight respite
9,987 nights

Adults only



1,994

adults accessed
day services



1,695

adults received
support services

New services required

Adults and children*



148

residential
places required



17

home support
places required



14

personal assistant
services required



100

people require
overnight respite

Adults only

Main support services required:



158

adults require
support services



Psychiatry



Vision
communication



Clinical psychology

* Children included are those who received residential, respite, home support and/or specialised support services from dedicated organisations. Information on the multidisciplinary supports received from Children's Disability Network Teams was not included.