

2024

National Ability Supports System (NASS)

People engaging with
disability services

HRB Health
Research
Board

HRB StatLink Series 24

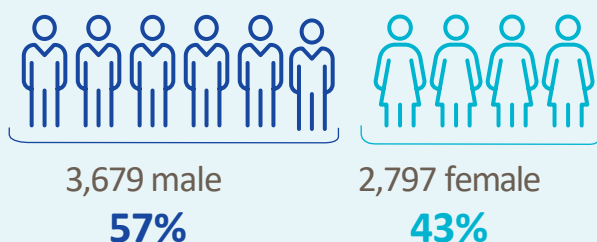
HSE Dublin and Midlands



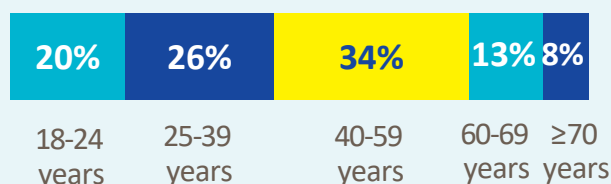
6,476

 adult records reviewed

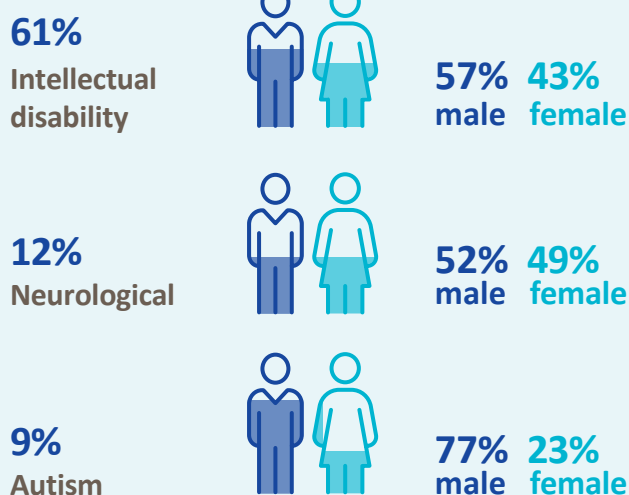
Demographics



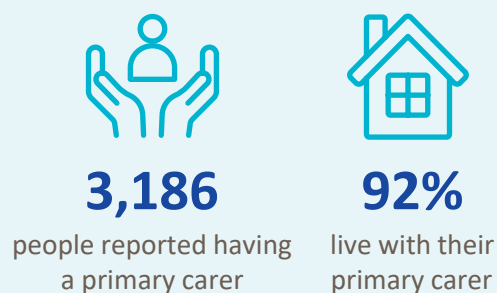
Age groups



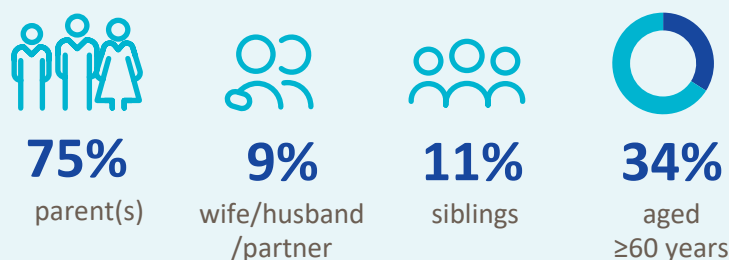
Most common primary disability



Primary carer



Of the primary carers:



Current services received

Adults and children*



1,681

lived in a
residential setting



968

received home
support



283

accessed a
personal assistant



532

accessed
day respite



1,343

availed of
overnight respite
36,081 nights

Adults only



3,946

adults accessed
day services



3,328

adults received
support services

New services required

Adults and children*



416

residential
places required



83

home support
places required



48

personal assistant
services required



213

people require
overnight respite

Adults only

Main support services required:



830

adults require
support services



Clinical psychology



Occupational
Therapy



Speech and
Language Therapy

* Children included are those who received residential, respite, home support and/or specialised support services from dedicated organisations. Information on the multidisciplinary supports received from Children's Disability Network Teams was not included.