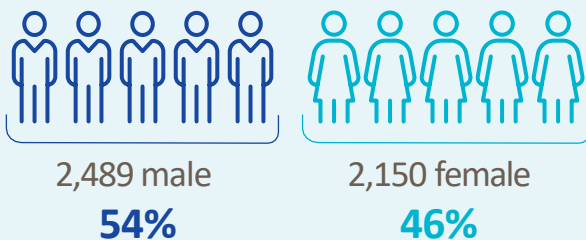




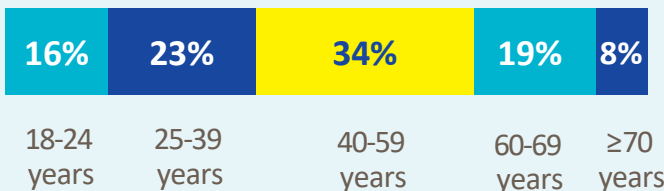
# 4,639

## Adult records reviewed on NASS

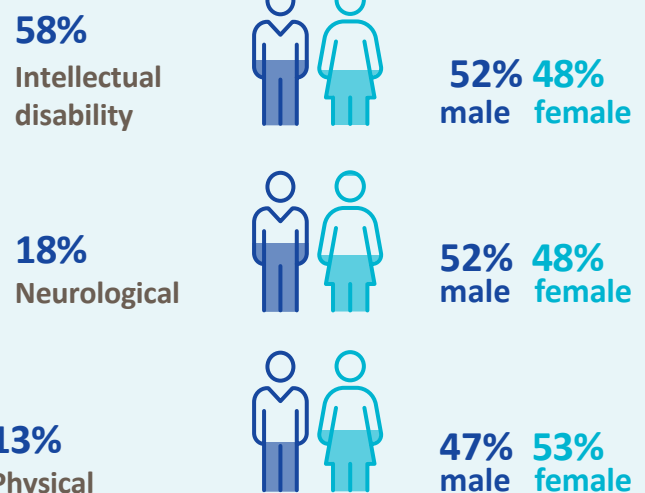
### Demographics



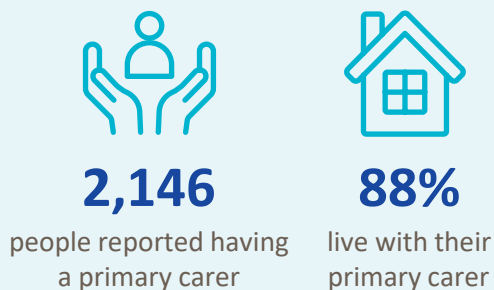
### Age groups



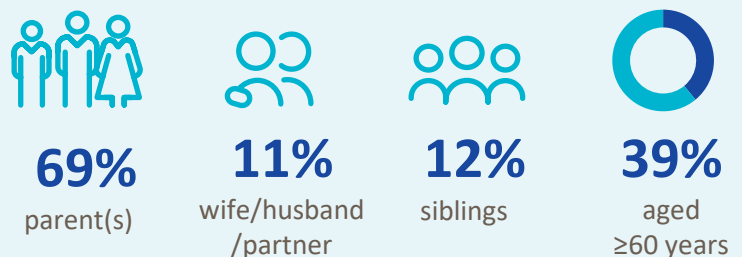
### Most common primary disability



### Primary carer



### Of the primary carers:



## Current services received

### Adults and children\*



### Adults only



## New services required

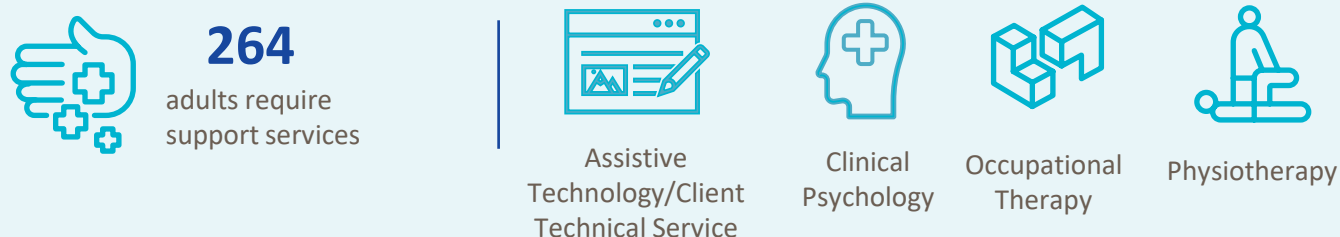
### Adults and children\*



\* Information provided by the HSE National Day Service Database.

### Adults only

#### Main support services required:



\* Children included are those who received residential, respite, home support and/or specialised support services from dedicated organisations. Information on the multidisciplinary supports received from Children's Disability Network Teams was not included.

**Research. Evidence. Action.**