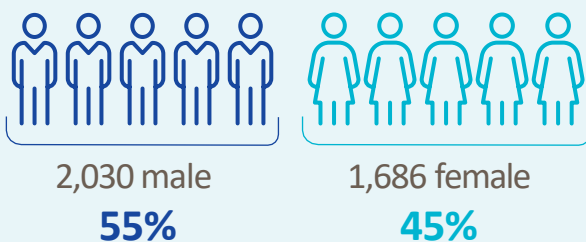




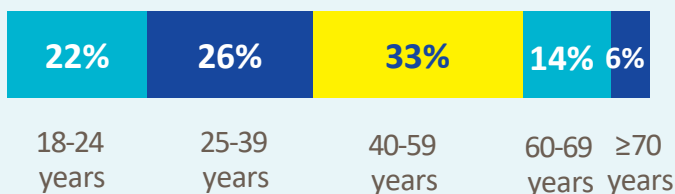
# 3,716

## Adult records reviewed on NASS

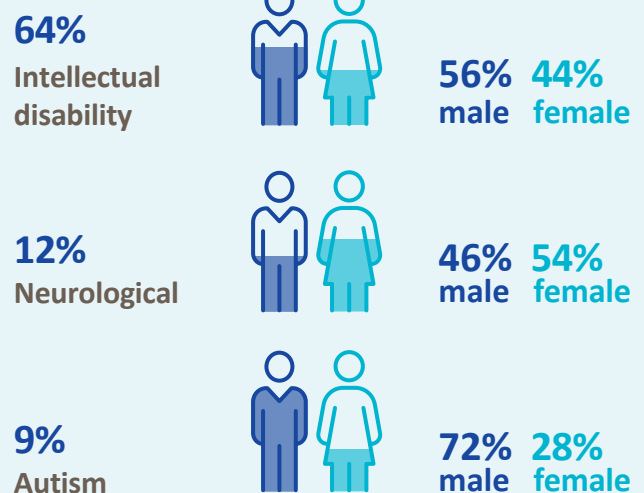
### Demographics



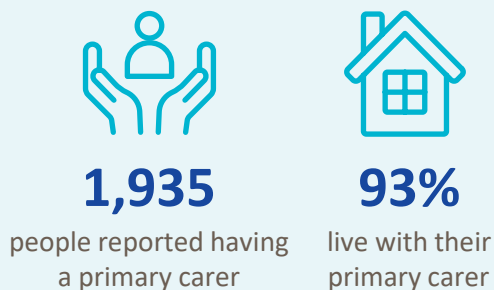
### Age groups



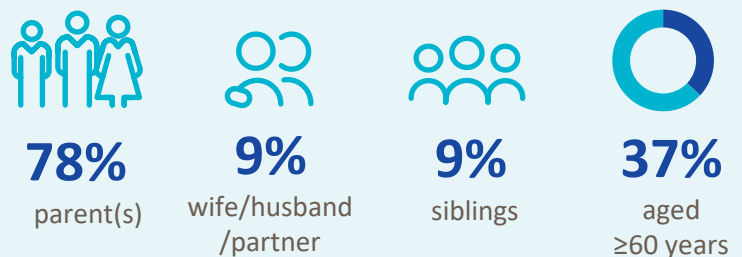
### Most common primary disability



### Primary carer



### Of the primary carers:



## Current services received

### Adults and children\*



**909**

lived in a  
residential setting



**823**

received home  
support



**138**

accessed a  
personal assistant



**124**

accessed  
day respite



**637**

availed of  
overnight respite  
8,706 nights

### Adults only



**2,733**

adults accessed  
day services



**1,463**

adults received  
support services

## New services required

### Adults and children\*



**250**

residential  
places required



**110**

home support  
places required



**16**

personal assistant  
services required



**167**

people require  
overnight respite



**337**

people require a  
day service in 2025\*

\* Information provided by the HSE National Day Service Database.

### Adults only



**279**

adults require  
support services

#### Main support services required:



Occupational  
Therapy



Chiropody



Speech and  
Language Therapy



Physiotherapy

\* Children included are those who received residential, respite, home support and/or specialised support services from dedicated organisations. Information on the multidisciplinary supports received from Children's Disability Network Teams was not included.

**Research. Evidence. Action.**