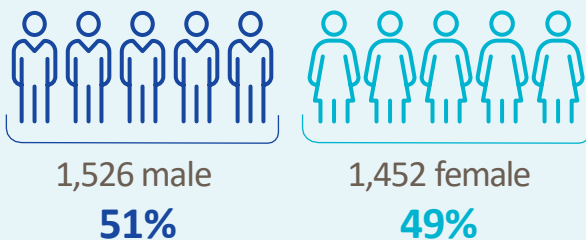




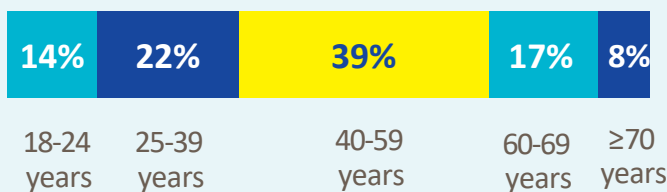
2,978

Adult records reviewed on NASS

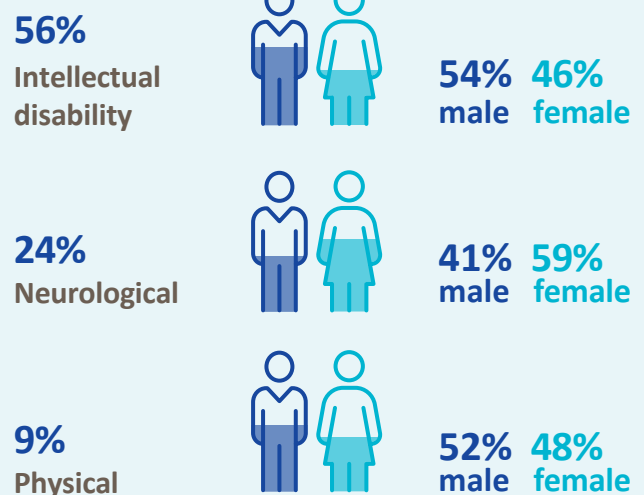
Demographics



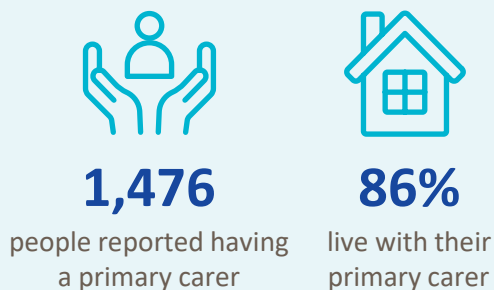
Age groups



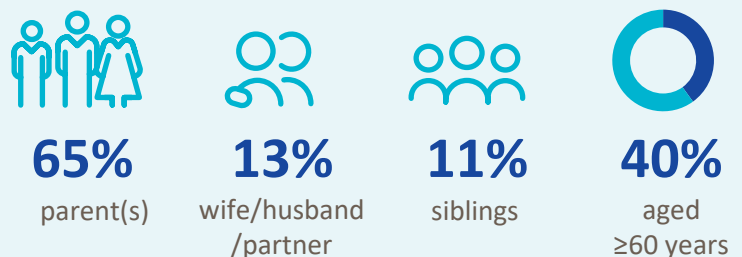
Most common primary disability



Primary carer



Of the primary carers:



Current services received

Adults and children*



745

lived in a
residential setting



313

received home
support



367

accessed a
personal assistant



189

accessed
day respite



414

availed of
overnight respite
9,575 nights

Adults only



1,921

adults accessed
day services



1,573

adults received
support services

New services required

Adults and children*



146

residential
places required



19

home support
places required



15

personal assistant
services required



96

people require
overnight respite



244

people require a
day service in 2025*

* Information provided by the HSE National Day Service Database.

Adults only

Main support services required:



163

adults require
support services



Psychiatry



Visual
Communication



Clinical
Psychology



Speech and
Language Therapy

* Children included are those who received residential, respite, home support and/or specialised support services from dedicated organisations. Information on the multidisciplinary supports received from Children's Disability Network Teams was not included.

Research. Evidence. Action.