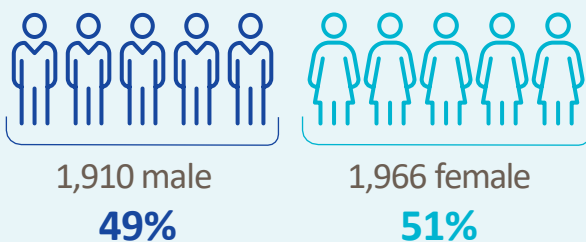




3,876

Adult records reviewed on NASS

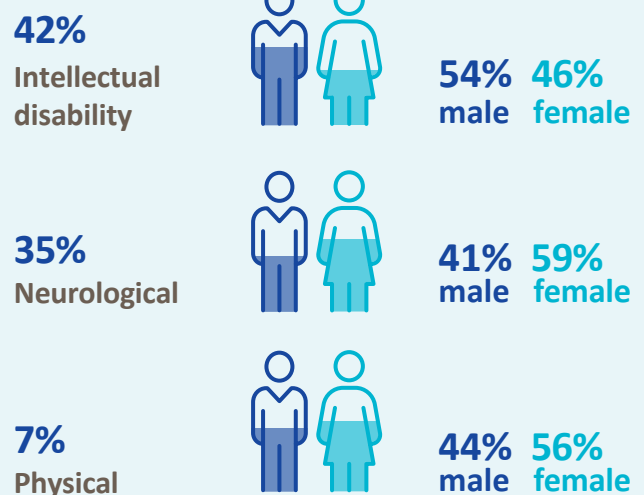
Demographics



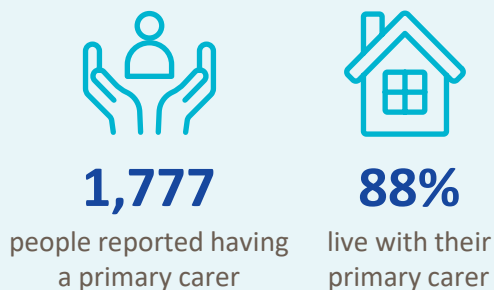
Age groups



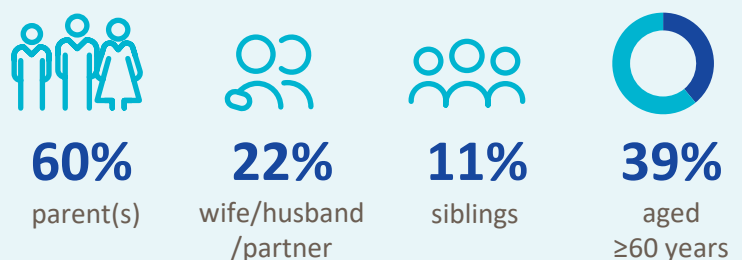
Most common primary disability



Primary carer



Of the primary carers:



Current services received

Adults and children*



Adults only



New services required

Adults and children*



* Information provided by the HSE National Day Service Database.

Adults only



* Children included are those who received residential, respite, home support and/or specialised support services from dedicated organisations. Information on the multidisciplinary supports received from Children's Disability Network Teams was not included.

Research. Evidence. Action.