



Staidéar Fadaimseartha na
hÉireann um Dhul in Aois

The Irish Longitudinal
Study on Ageing



Trinity College Dublin
Coláiste na Tríonóide, Baile Átha Cliath
The University of Dublin



WHO Collaborating Centre
for Longitudinal Studies
on Ageing and the Life Course

The Irish Longitudinal Study on Ageing (TILDA)

Data Availability & Access

What is TILDA



The Irish Longitudinal
Study on Ageing



Trinity College Dublin
Coláiste na Tríonóide, Baile Átha Cliath
The University of Dublin



WHO Collaborating Centre
for Longitudinal Studies
on Ageing and the Life Course



Baseline (2009-2011)

8,504 participants

8,175 (50+ years)

62% response rate

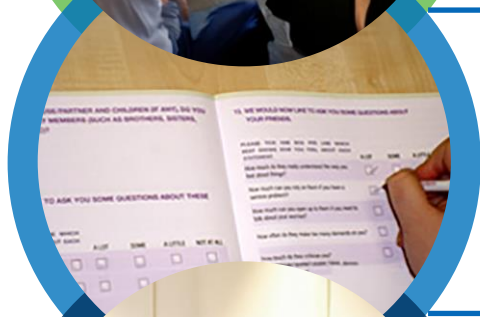
1 in 156 adults 50+

Repeat interviews every 2 years



Computer Assisted Personal Interview (CAPI)

Face to face interview in the home



Self Completion Questionnaire (SCQ)

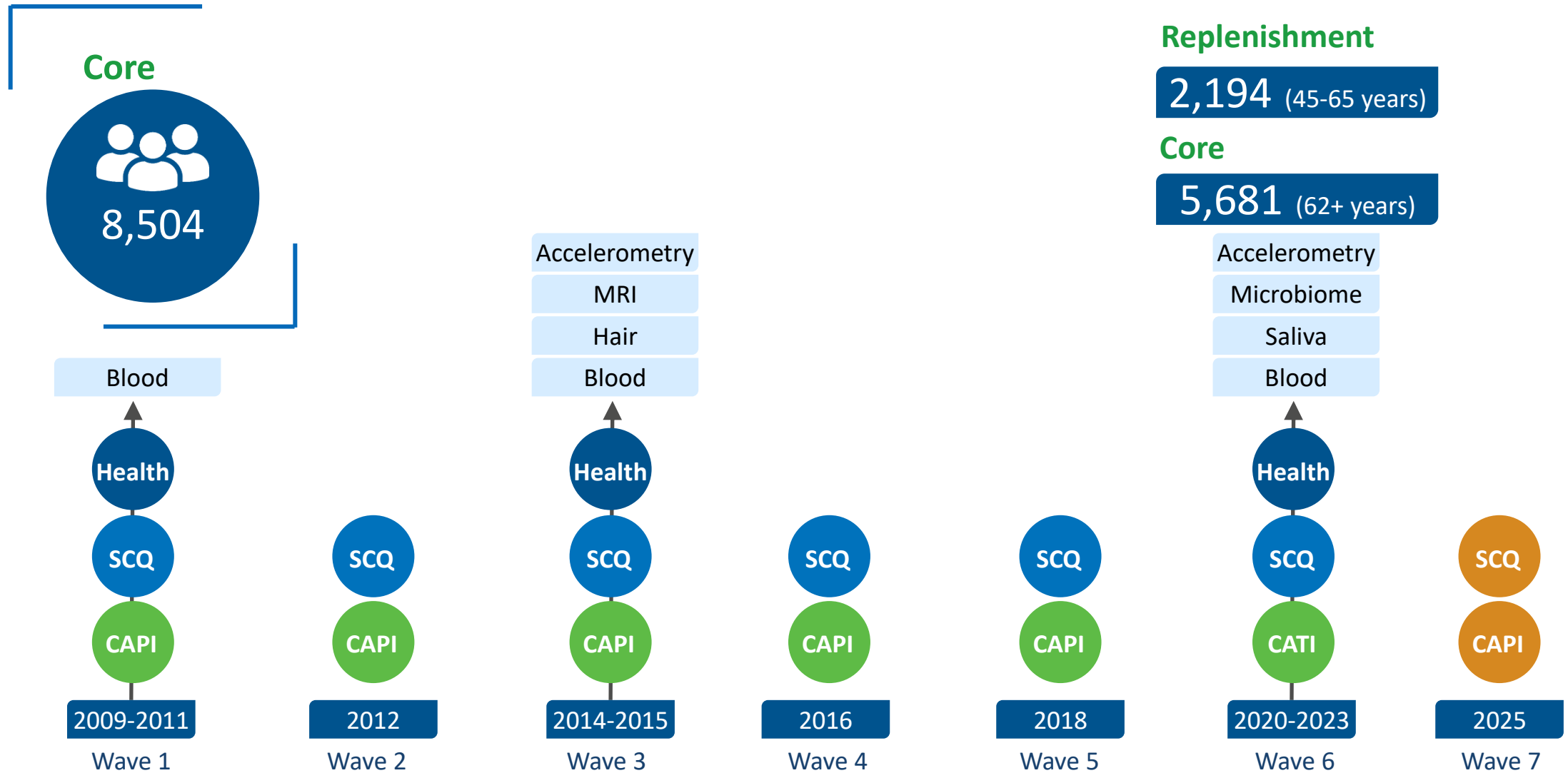
Paper questionnaire completed in own time



Health Assessment

Assessment administered by health practitioner in TILDA Health Assessment Centre

Waves of Data Collection



CAPI: Computer Aided Personal Interview. **CATI:** Computer Aided Telephone Interview. **SCQ:** Self Completion Questionnaire, TILDA Health Assessment.

TILDA Data



The Irish Longitudinal
Study on Ageing



Trinity College Dublin
Coláiste na Tríonóide, Baile Átha Cliath
The University of Dublin



WHO Collaborating Centre
for Longitudinal Studies
on Ageing and the Life Course

Social

- Demographics
- Intergenerational Transfers
- Lifelong Learning
- Social Connectedness
- Expectations
- Driving/Travel

Economic

- Employment
- Job History
- Retirement Planning
- Sources of Income
- House Ownership
- Assets

Health

- Physical Health
- Cognitive Health
- Behavioural Health
- Mental Health
- Medications

Self-Completion Questionnaire

Social Activities

Loneliness

Accommodation
Problems

Technology and
Internet use

Relationship Quality

Ageing Perceptions

Anxiety

Pet Ownership

Alcohol Use

Quality of Life

Purpose in Life

Sleep Chronotype

Stress

Discrimination

Sexual Activity

Neighbourhood
Disorder

Childhood Health
Conditions

Creative Activities

Life Satisfaction

Food Frequency

Health Assessment Content

Cognition

- MMSE
- MoCA
- SART
- Choice Reaction
- Colour Trails

Cardiovascular

- Blood Pressure
- Pulse Wave Velocity
- Phasic Blood Pressure
- Near Infrared Spectroscopy
- Heart rate variability

Physical Function

- Timed-Up and Go
- Repeated Chair Stands
- GAIT Speed
- Heel Bone Ultrasound
- Grip Strength

Anthropometric / Other

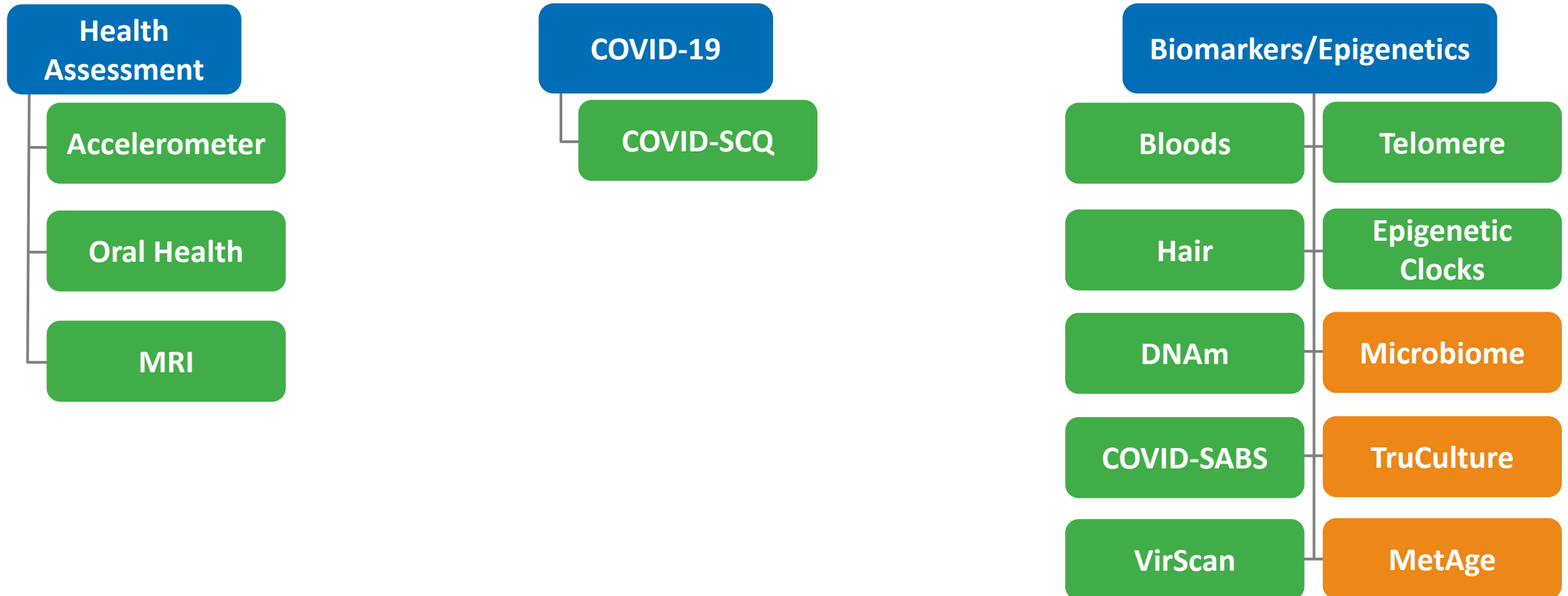
- Waist Circumference
- Waist-Hip Ratio
- Height
- Weight
- Blood Samples

Vision

- Retinal Image
- Contrast Sensitivity
- Visual Acuity
- Macular Pigment Optical Density

Supplementary Datasets

Substudies



Supplementary Datasets

- GMS medical card scheme
- Medicines and food supplements
- Dosage, strength, cost of drug
- Inappropriate prescribing

88% Consent rate

Wave 1-5 linked (1.9million claims)

- RCSI & ICGP
- Health conditions, medications, vaccines, treatments, visits, emergency visits, healthcare utilisation
- No. of GP and nurse visits
- Medical card introduction

92% Consent rate

Ongoing Linkage (<1% complete)

HSE PCRS

GP Pilot

Data Linkages

Environmental exposure

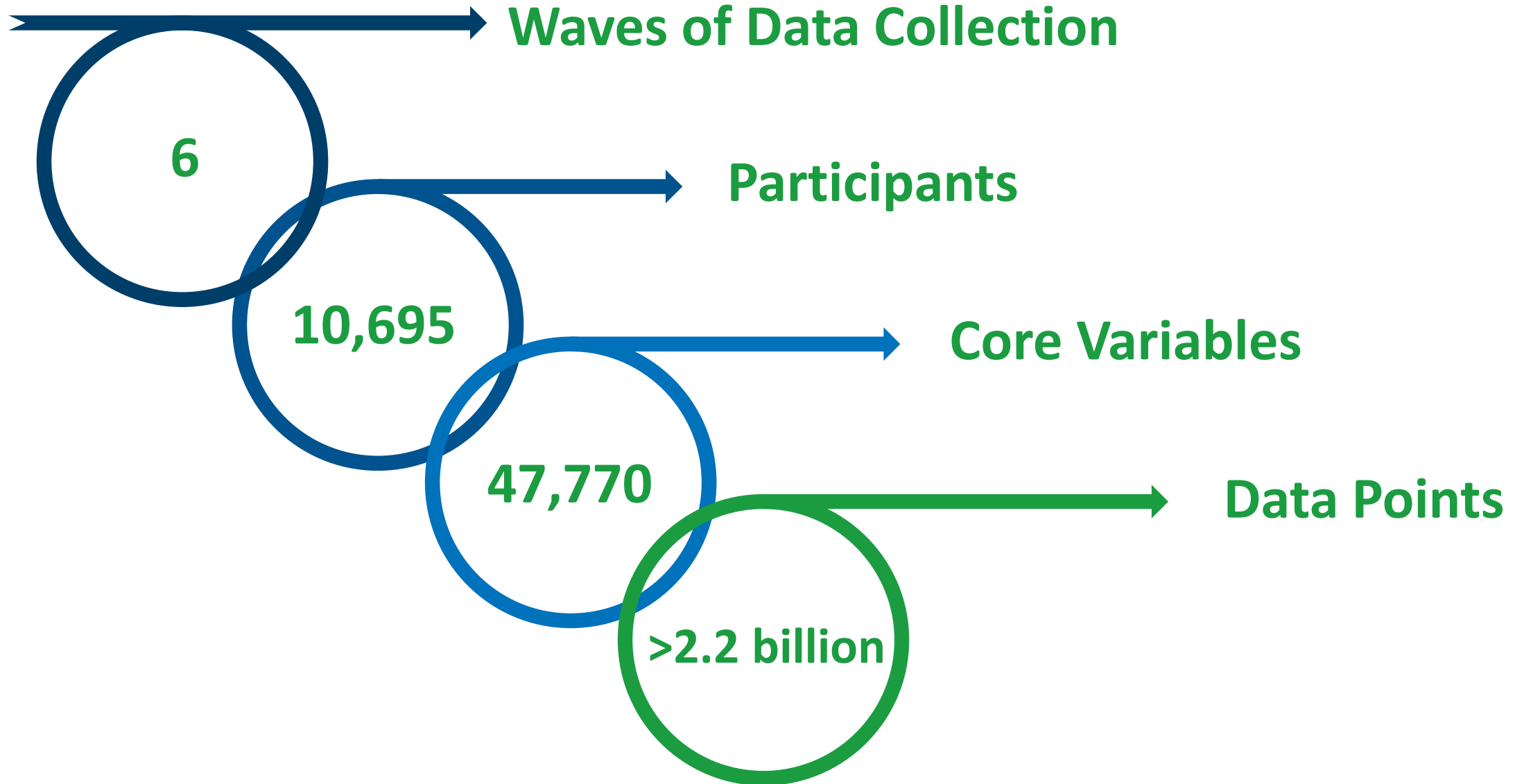
GRO

- GIS, Mapping, CSO, EPA
- Public services
- Environmental: Radon, Air pollution, water fluoridation mapping
- Green & blue space
- Lifetime Exposures

- Cause of death
- Co-morbidities
- Mortality
- End of life care
- Access and costs

89% match rate

TILDA in Numbers



Access & Availability

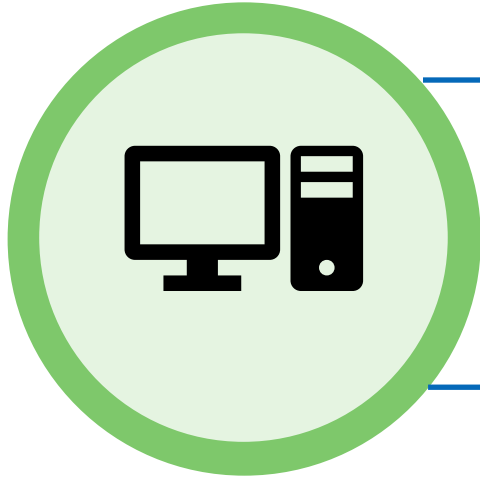
Public Dataset Access



- TILDA Public Datasets archived with the ISSDA Data Repository.
- Application form available and processed through their website.
- Pseudonymised versions of the TILDA datasets - Waves 1 – 5 + COVID-SCQ. **Wave 6 (Sep 2025).**
- All variables reviewed for inclusion.
- Datasets updated periodically to include new variables.
- If variable is too identifiable – variable is not included for release, or may undergo anonymisation techniques.
 - Top/bottom coding
 - Categorisation
 - Combination of variables
- Documentation detailing all variables public dataset status available on TILDA website and ISSDA.

Sensitive Dataset Access

<https://tilda.tcd.ie/data/accessing-data/hotdesk/>



In-Person Hotdesks

Restricted computers in TILDA offices

In-Person Hotdesks

Access sensitive TILDA data



Safe Haven

Restricted use – data cannot be removed
Bespoke datasets
Generate aggregated output



Online booking system

Researchers book in advance.
Access from 10am – 4pm Monday to Friday

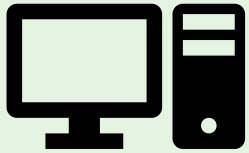


Results sent to users

Generated output reviewed at end of the week
Results emailed to researchers

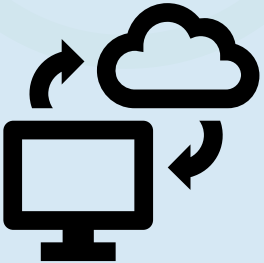
Sensitive Dataset Access

<https://tilda.tcd.ie/data/accessing-data/hotdesk/>



In-Person Hotdesks

Restricted computers in TILDA offices

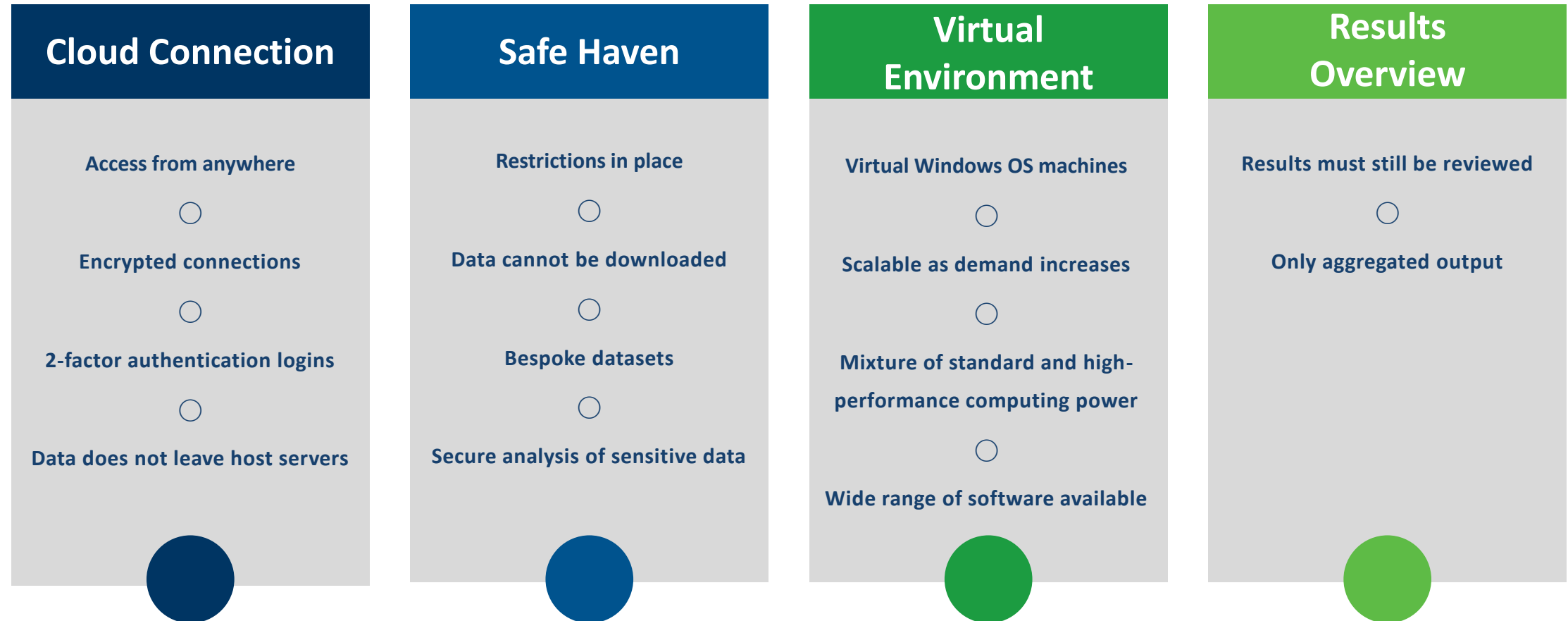


Remote Hotdesks

Cloud Connected Trusted Research Environment
(Available Q2 2025)

Remote Hotdesks: TILDA VISTA

Virtual Infrastructure for Secure TILDA data Access



- Hotdesk applications are reviewed every two weeks.
- Researchers are required to provide proof of GDPR training from their own institute, complete TILDA data training, and sign a data use agreement.

Data Availability & Resources

- Datasets must be cleaned and processed before release for analysis.
 - New datasets released periodically – check with team re. timelines for access before applications.
 - Resources available to help navigate the data-
 - TILDA in-person data workshops (<https://tilda.tcd.ie/data-workshop/>)
 - TILDA data workshop webinars (<https://tilda.tcd.ie/data-workshop/webinar/>)
 - TILDA questionnaires & documentation (<https://tilda.tcd.ie/data/documentation/>)
 - TILDA questions searchable database (<https://tilda.tcd.ie/data/questionnaire/QuestionnaireHarmonisation/>)
 - TILDA team is available to check information such as sub-sample numbers in advance of applications.
-

Applying for SDAP using TILDA data

Contact TILDA Research & Development Manager first
Dr Ann Hever (hevera@tcd.ie)

Get in touch early in case there are any data queries we need to help with and to confirm availability of the data you are interested in using!

TILDA is supported by



An Roinn Sláinte
Department of Health



The
A T L A N T I C
Philanthropies

tilda
Staidéar Fadaimseartha na
hÉireann um Dhul in Aois

The Irish Longitudinal
Study on Ageing



Trinity College Dublin
Coláiste na Tríonóide, Baile Átha Cliath
The University of Dublin



WHO Collaborating Centre
for Longitudinal Studies
on Ageing and the Life Course

Get in touch:



tilda@tcd.ie

siobhan.scarlett@tcd.ie

Additional Funding



Irish Life



Feidhmeannacht na Seirbhíse Sláinte
Health Service Executive



Centre for Ageing Research
and Development in Ireland



Taighde Éireann
Research Ireland



Family
Carers
Ireland

No one should have to care alone



Údarás Um Shábháilteacht Ar Bhóithre
Road Safety Authority



National Institutes
of Health



**ENTERPRISE
IRELAND**

where innovation means business



Clár Éire Ildánach
Creative Ireland
Programme



Staidéar Fadaimseartha na
hÉireann um Dhul in Aois

The Irish Longitudinal
Study on Ageing



Trinity College Dublin
Coláiste na Tríonóide, Baile Átha Cliath
The University of Dublin



WHO Collaborating Centre
for Longitudinal Studies
on Ageing and the Life Course