

**HRB Bulletin**  
National Psychiatric  
Inpatient Reporting System

**CHO 8 Bulletin**  
**2023**

## Introduction

This bulletin is a synopsis of data for CHO 8 from the National Psychiatric Inpatient Reporting System (NPIRS) for 2023 and that reported in the *National Psychiatric Inpatient Reporting System (NPIRS) Annual Report on the Activities of Irish Psychiatric Units and Hospitals 2023* (Daly et al. 2024). The address from which a person was admitted was used to assign him/her to a CHO area and, thus, CHO area refers to the CHO area of residence of admissions. CHO 8 covers the counties of Laois, Offaly, Longford, Westmeath, Louth and Meath.

The rates reported below were calculated using the Census of Population 2022 (Central Statistics Office 2023) and all rates are per 100,000 total population. It was not possible to calculate rates for socio-economic groups for each of the CHO areas and, thus, proportions are presented for socio-economic group.

## All and first admissions

There were 1,913 admissions for CHO 8 in 2023, a rate of 281.9 per 100,000, the third lowest amongst all areas (Table 1). Admissions for CHO 8 accounted for 12% of all admissions to psychiatric units and hospitals in 2023. There were 649 first admissions, a rate of 95.6 per 100,000, and there were 1,264 re-admissions, representing a rate of 186.3 per 100,000.

## Sex and age

Females accounted for 52% of all and 46% of first admissions. Females had a higher rate of all admissions than males, at 293.0 per 100,000, compared with 270.7 for males (Table 1). In contrast, males had a higher rate of first admissions than females, at 103.3, compared with 88.1 per 100,000 for females.

The 25-34 year age group had the highest rate of all admissions for CHO 8, at 483.5 per 100,000, followed by the 65-74 year age group, at 410.6, and the 75 year and over age group, at 397.1 per 100,000. The 18-19 year age group had the lowest rate of all admissions, at 323.6 per 100,000.

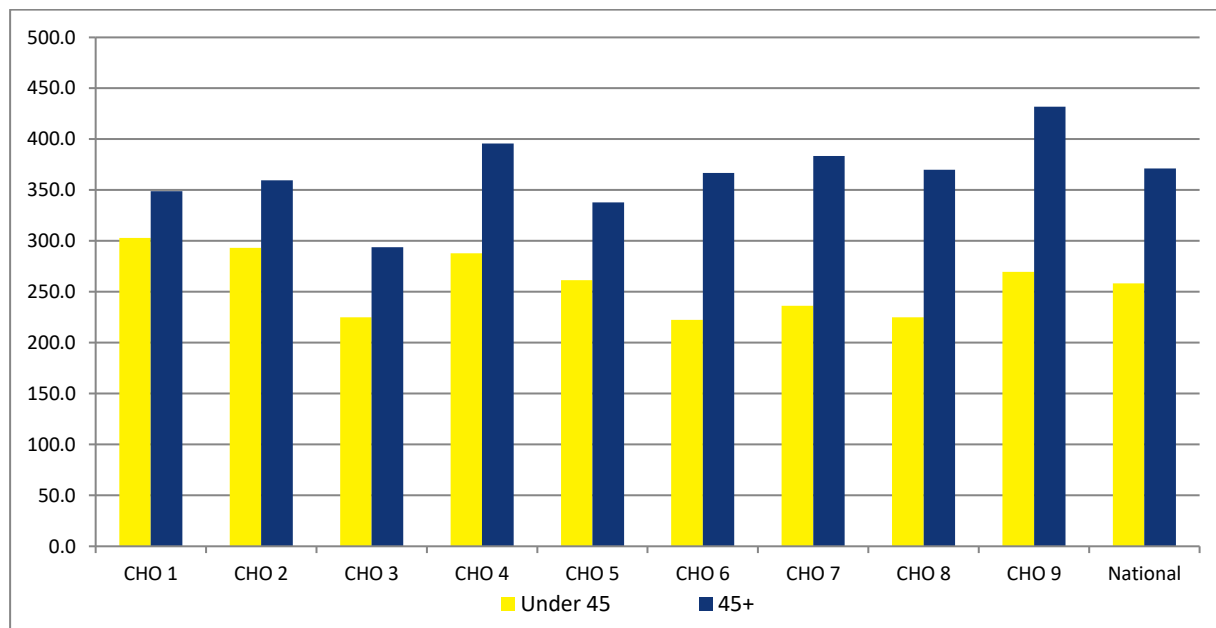
The 18-19 year and over age group had the highest rate of first admissions in CHO 8, at 189.7 per 100,000, followed by the 25-34 year age group, at 160.7, and the 75 year and over age group, at 157.8. The 45-54 year group had the lowest rate of first admissions, at 101.4.

Age groups were condensed into two groups: under 45 years and 45 years and over. The 45 year and over age group had the highest rate of admissions in all CHO areas, with rates ranging from 431.8 per 100,000 in CHO 9 to 293.9 in CHO 3 (Figure 1). In CHO 8 the rate of admission for the 45 year and over age group was 370.1 per 100,000, higher than that for the under 45 year age group, at 225.1.

**Table 1: CHOs. All and first admissions. Sex. Ireland 2023. Rates per 100,000 total population**

	All			First		
	Male	Female	Total	Male	Female	Total
CHO 1	320.8	324.7	322.8	114.9	104.0	109.4
CHO 2	331.4	312.1	321.6	118.9	103.1	110.9
CHO 3	265.3	243.2	254.2	88.8	84.6	86.7
CHO 4	343.8	322.7	333.1	146.9	121.8	134.2
CHO 5	321.4	267.7	294.3	127.7	97.8	112.6
CHO 6	263.4	294.8	279.6	94.6	88.9	91.7
CHO 7	290.3	290.3	290.3	119.1	106.4	112.7
CHO 8	270.7	293.0	281.9	103.3	88.1	95.6
CHO 9	315.9	339.8	328.0	137.3	137.6	137.5
<b>Total</b>	<b>305.4</b>	<b>301.8</b>	<b>303.6</b>	<b>120.6</b>	<b>106.3</b>	<b>113.4</b>

**Figure 1: All admissions by age category by CHO area. Ireland 2023. Rates per 100,000 total population**



**Marital status**

Single persons accounted for 54% of all and almost 51% of first admissions for CHO 8; married persons accounted for 28% of all and 31% of first admissions; widowed persons accounted for 6% of all and 5% of first admissions; and divorced persons accounted for 3% of all and 4% of first admissions.

**Socio-economic group**

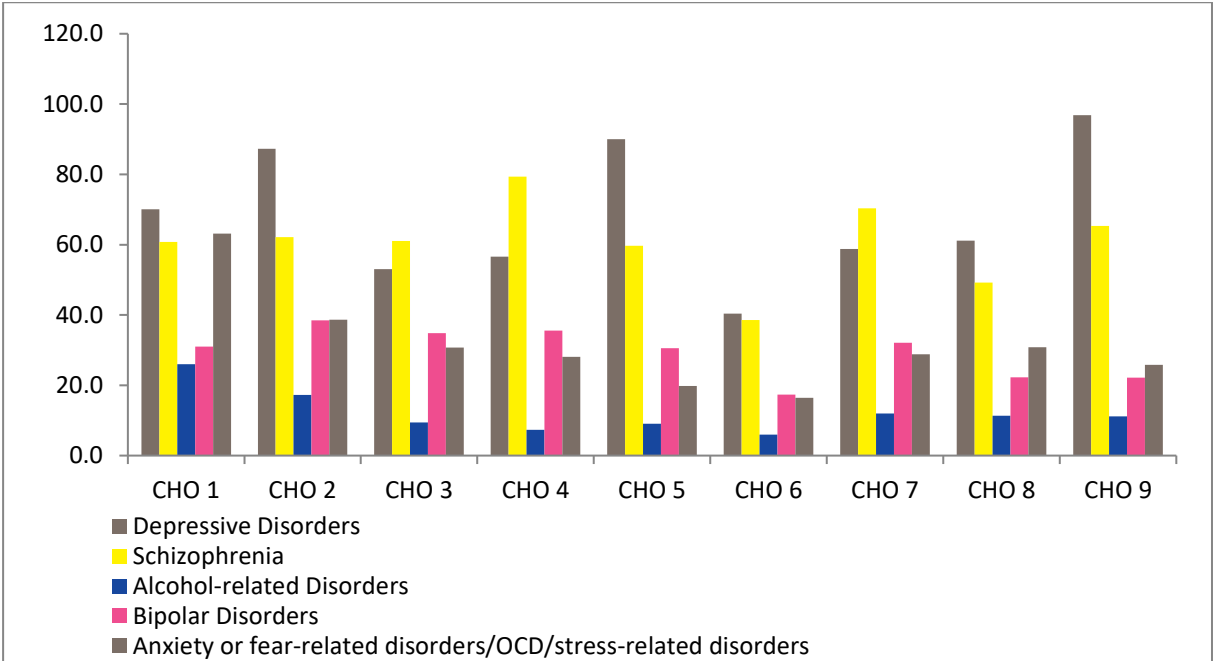
Eleven per cent of all admissions had non-manual occupations, 8% were lower professionals and almost 5% were manual skilled. However, it is worth noting that 61% of returns for CHO 8 did not specify an occupation, making assignment to a socio-economic group impossible. Proportions for first admissions were somewhat similar.

**Diagnosis**

Depressive disorders accounted for 22% of all admissions and 21% of first admissions for CHO 8; schizophrenia accounted for 17% of all and 14% of first admissions; and anxiety or fear-related disorders/OCD/stress-related disorders accounted for 11% of all and 15% of first admissions.

All and first admission rates in CHO 8 were highest for depressive disorders, at 61.2 (Figure 2) and 20.2 per 100,000, respectively. Schizophrenia had the second highest rate of all admissions in CHO 8, at 49.2, followed by anxiety or fear-related disorders/OCD/stress-related disorders, at 30.8 per 100,000. Anxiety or fear-related disorders/OCD/stress-related disorders had the second highest rate of first admissions, at 14.4 per 100,000, followed by schizophrenia, at 13.6.

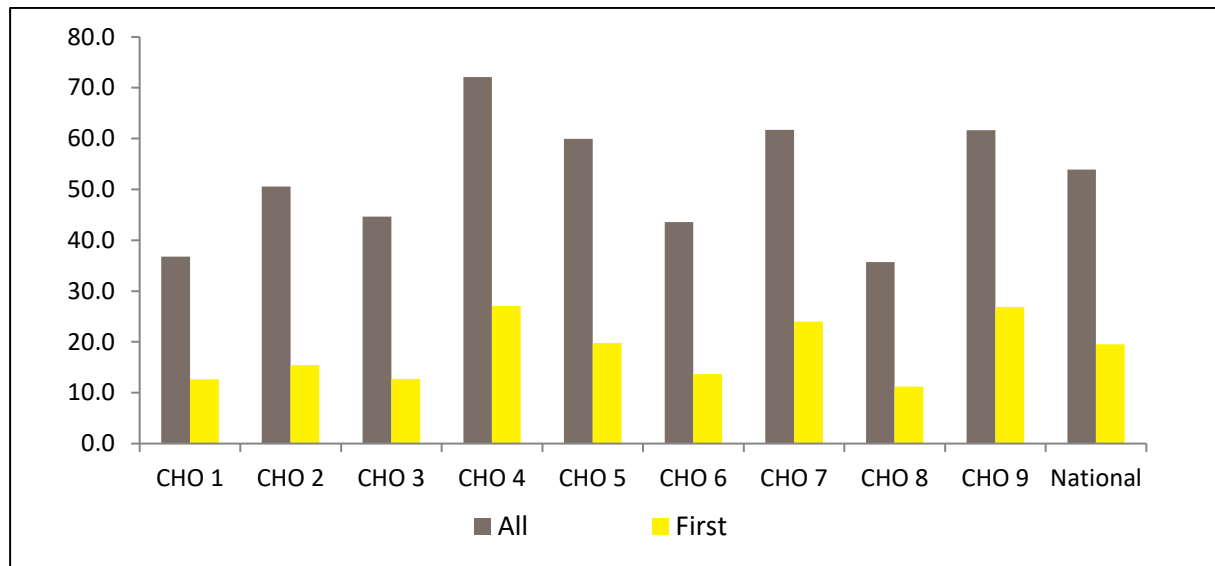
**Figure 2: Admissions for selected diagnostic groups by CHO area. Ireland 2023. Rates per 100,000 total population**



**Legal status**

Involuntary admissions accounted for almost 12% of all and 11% of first admissions for CHO 8. The rate of all involuntary admissions in CHO 8 was 35.7, while that for first admissions was 11.2 per 100,000 (Figure 3). CHO 8 had the lowest rate of involuntary admissions for all and first admissions across all CHO areas.

**Figure 3: All and first involuntary admissions by CHO area. Ireland 2023. Rates per 100,000 total population**



### Hospital type

Fifty-five per cent of all admissions for CHO 8 were to general hospital psychiatric units, 27% were to independent/private and private charitable centres and 18% were to psychiatric hospitals/continuing care units.

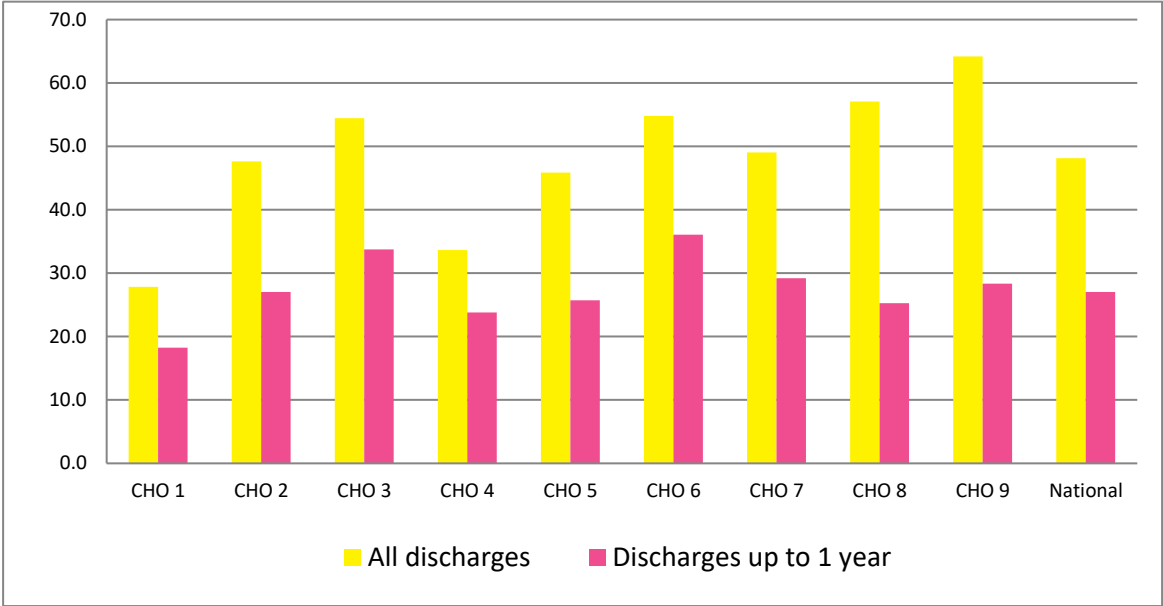
### Discharges

There were 1,895 discharges (1,888 discharges and 7 deaths) for CHO 8 in 2023. Thirty-one per cent of discharges occurred within one week of admission, almost 18% occurred within one to two weeks and 21% occurred within two to four weeks of admission. Ninety-five per cent of discharges occurred within three months of admission. This is similar to the pattern observed nationally.

Discharges for CHO 8 accounted for 12% of all discharges and 14% of all inpatient days nationally. The average length of stay for all discharges for CHO 8 was 54.1 days (median 14 days) (Figure 4). This compares with the national average of 47.9 days (median 15 days).

When discharges with a length of stay of one year or more were excluded, discharges for CHO 8 accounted for 12% of discharges and 11% of inpatient days nationally. The average length of stay for discharges, excluding those with a length of stay of one year or more, was 25.3 days (median 14 days).

**Figure 4: Average length of stay (days) for all discharges and discharges up to 1 year by CHO area. Ireland 2023**



**References**

Central Statistics Office (2023) Census of Population 2022, [www.cso.ie](http://www.cso.ie).

Daly A Lovett H and Lynn E (2024) HRB StatLink Series 21 National Psychiatric Inpatient Reporting System (NPIRS) Annual Report on the *Activities of Irish Psychiatric Units and Hospitals 2023*. Dublin: Health Research Board.