

HRB Bulletin
National Psychiatric
Inpatient Reporting System

CHO 6 Bulletin
2023

Introduction

This bulletin is a synopsis of data for CHO 6 from the National Psychiatric Inpatient Reporting System (NPIRS) for 2023 and that reported in the *National Psychiatric Inpatient Reporting System (NPIRS) Annual Report on the Activities of Irish Psychiatric Units and Hospitals 2023* (Daly et al. 2024). The address from which a person was admitted was used to assign him/her to a CHO area and, thus, CHO area refers to the CHO area of residence of admissions. CHO 6 covers the areas of Dun Laoghaire, Dublin Southeast and East Wicklow.

The rates reported below were calculated using the Census of Population 2022 (Central Statistics Office 2023) and all rates are per 100,000 total population. It was not possible to calculate rates for socio-economic groups for each of the CHO areas and, thus, proportions are presented for socio-economic group.

All and first admissions

There were 1,275 admissions for CHO 6 in 2023, a rate of 279.6 per 100,000 (Table 1). Admissions for CHO 6 accounted for 8% of all admissions in 2023. There were 418 first admissions, a rate of 91.7 per 100,000, the second lowest rate for first admissions amongst all CHO areas, and there were 857 re-admissions, representing a rate of 188.0 per 100,000.

Sex and age

Females accounted for 54% of all admissions and a higher rate of all admissions than males, at 294.8 per 100,000, compared with 263.4 for males (Table 1). In contrast, males had a higher rate of first admissions than females, at 94.6 per 100,000, compared with 88.9 for females.

The 45-54 year old group had the highest rate of all admissions in CHO 6, at 384.2 per 100,000, followed by the 75 year and over age group, at 368.9, and the 65-74 year group, at 367.2. The 18-19 year old group had the lowest rate of admission, at 298.1 per 100,000.

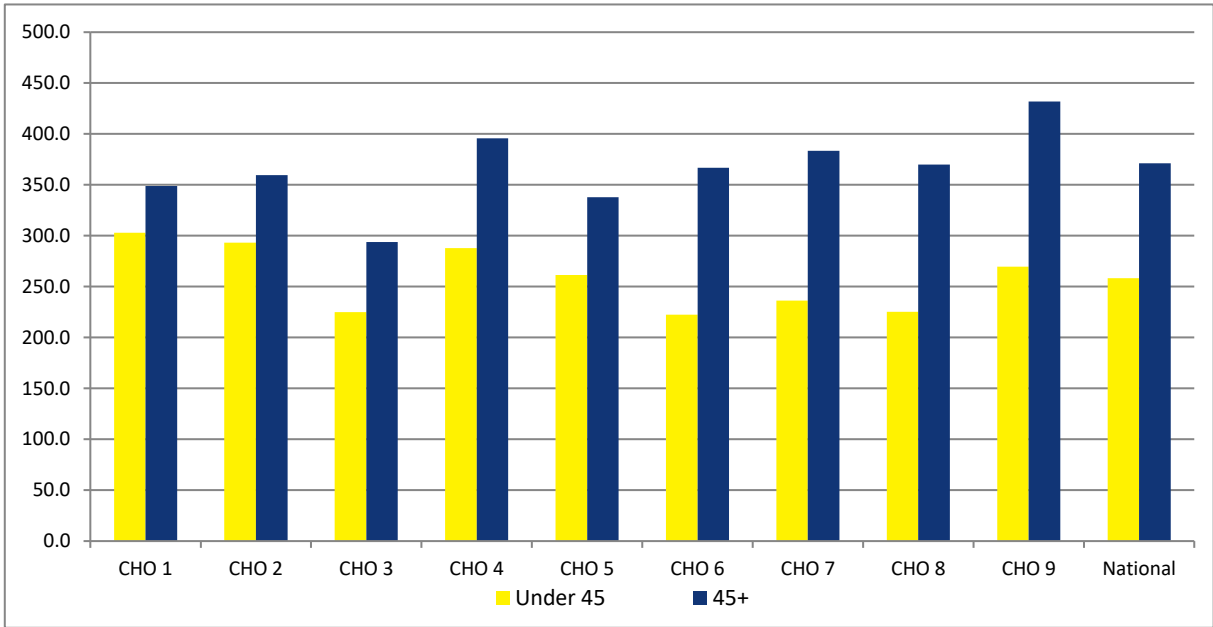
The 18-19 year age group had the highest rate of first admissions in CHO 6, at 162.6 per 100,000, followed by the 20-24 year age group, at 136.3 and the 25-34 year age group, at 132.5. The 55-64 year age group had the lowest rate of first admissions, at 82.1.

Age groups were condensed into two groups: under 45 years and 45 years and over. The 45 year and over age group had the highest rate of admissions in all CHO areas, with rates ranging from 431.8 per 100,000 in CHO 9 to 293.9 in CHO 3 (Figure 1). In CHO 6 the rate of admission for the 45 year and over age group, at 366.9 per 100,000 was higher than that for the under 45 year age group, at 222.3.

Table 1: CHOs. All and first admissions. Sex. Ireland 2023. Rates per 100,000 total population

	All			First		
	Male	Female	Total	Male	Female	Total
CHO 1	320.8	324.7	322.8	114.9	104.0	109.4
CHO 2	331.4	312.1	321.6	118.9	103.1	110.9
CHO 3	265.3	243.2	254.2	88.8	84.6	86.7
CHO 4	343.8	322.7	333.1	146.9	121.8	134.2
CHO 5	321.4	267.7	294.3	127.7	97.8	112.6
CHO 6	263.4	294.8	279.6	94.6	88.9	91.7
CHO 7	290.3	290.3	290.3	119.1	106.4	112.7
CHO 8	270.7	293.0	281.9	103.3	88.1	95.6
CHO 9	315.9	339.8	328.0	137.3	137.6	137.5
Total	305.4	301.8	303.6	120.6	106.3	113.4

Figure 1: All admissions by age category by CHO area. Ireland 2023. Rates per 100,000 total population



Marital status

Single persons accounted for almost 48% of all and 47% of first admissions for CHO 6; married persons accounted for 26% of all and 27% of first admissions; widowed persons accounted for 5% of all and 3% of first admissions; and divorced persons accounted for 3% of all and 1% of first admissions.

Socio-economic group

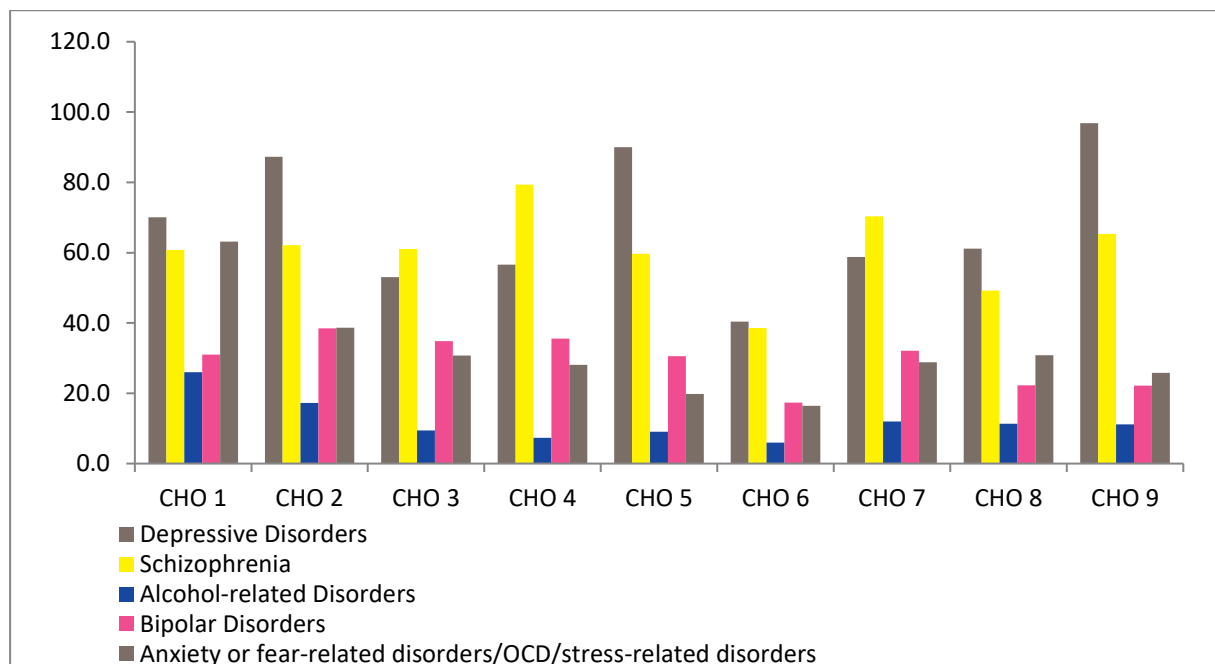
Eight per cent of all admissions had non-manual occupations, 6% were lower professionals and 5% were higher professionals. However, it is worth noting that 71% of returns for CHO 6 did not specify an occupation, making assignment to a socio-economic group impossible.

Diagnosis

Depressive disorders accounted for 14% of all admissions and 16% of first admissions for CHO 6; schizophrenia accounted for 14% of all and 13% of first admissions; and anxiety or fear-related disorders/OCD/stress-related disorders accounted for 6% of all and 9% of first admissions.

All admission rates in CHO 6 were highest for depressive disorders, at 40.4 per 100,000, followed by schizophrenia, at 38.6, and bipolar disorders, at 17.3 (Figure 2). First admission rates were also highest for depressive disorders at 14.7 per 100,000, followed by schizophrenia, at 12.3 and anxiety or fear-related disorders/OCD/stress-related disorders, at 8.6.

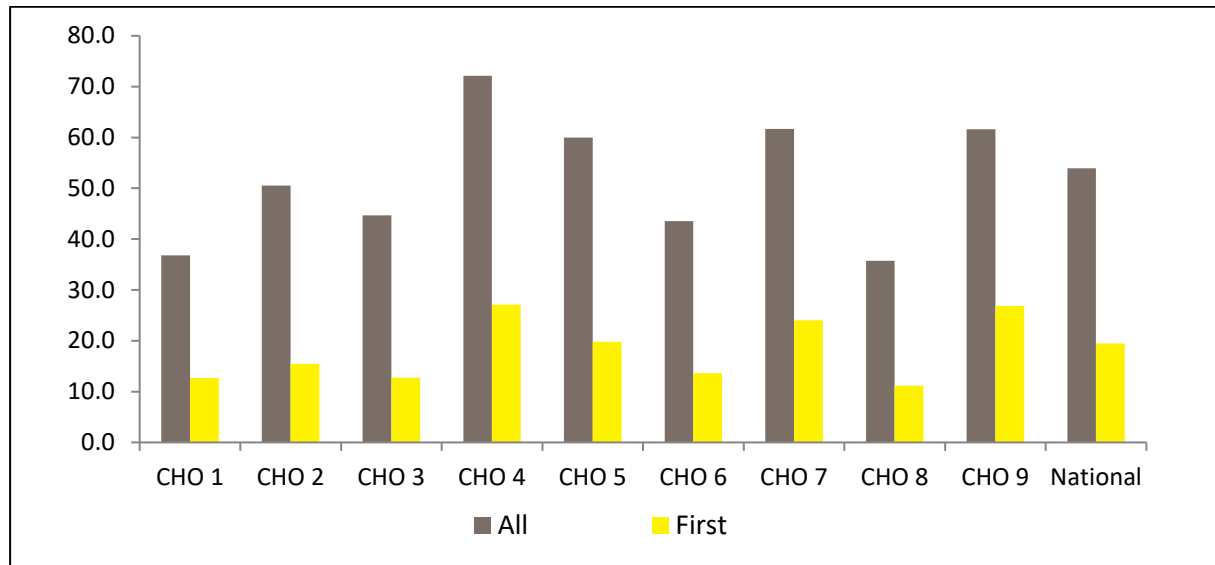
Figure 2: Admissions for selected diagnostic groups by CHO area. Ireland 2023. Rates per 100,000 total population



Legal status

Involuntary admissions accounted for almost 15% of all and 14% of first admissions for CHO 6. The rate of all involuntary admissions in CHO 6 was 43.6, while that for first admissions was 13.7 per 100,000 (Figure 3).

Figure 3: All and first involuntary admissions by CHO area. Ireland 2023. Rates per 100,000 total population



Hospital type

Forty-four per cent of all admissions for CHO 6 were to independent/private and private charitable centres, 39% were to psychiatric hospitals/continuing care units and 17% were to general hospital psychiatric units.

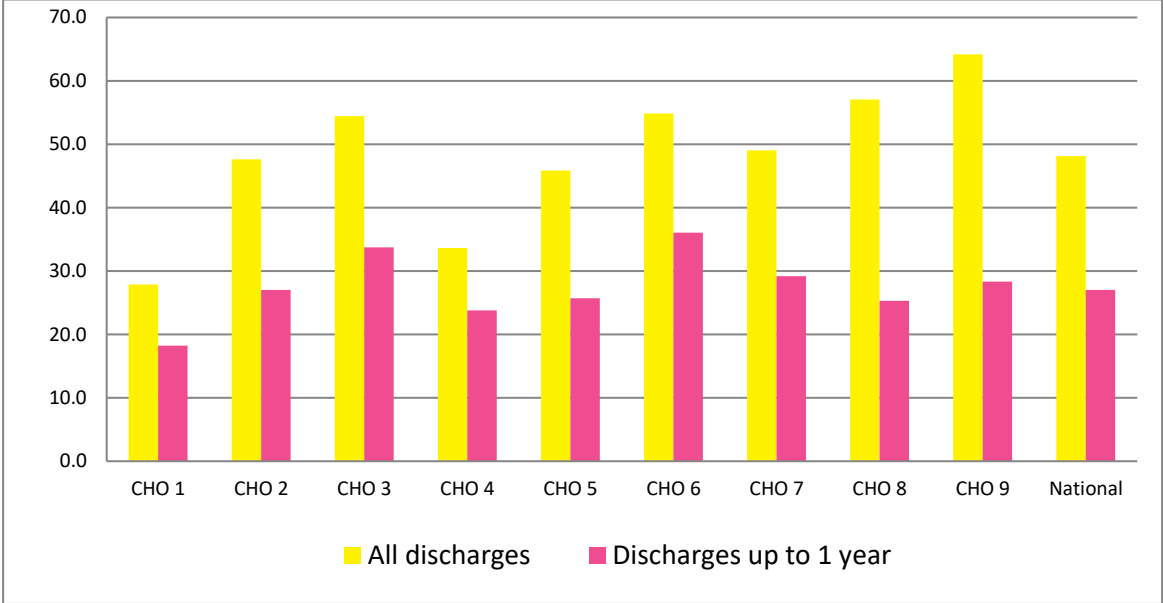
Discharges

There were 1,279 discharges (1,274 discharges and 5 deaths) for CHO 6 in 2023. Twenty-four per cent of discharges occurred within one week of admission, almost 15% occurred within one to two weeks and 18% occurred within two to four weeks of admission. Ninety per cent of all discharges occurred within three months of admission. This is similar to the pattern observed nationally.

Discharges for CHO 6 accounted for 8% of all discharges and 9% of all inpatient days nationally. The average length of stay for all discharges for CHO 6 was 54.7 days (median 21 days) (Figure 4). This compares with the national average of 47.9 days (median 15 days).

When discharges with a length of stay of one year or more were excluded, discharges for CHO 6 accounted for 8% of discharges and 11% of inpatient days nationally. The average length of stay for discharges, excluding those with a length of stay of one year or more, was 35.9 days (median 21 days), the longest average length of stay amongst all CHO areas.

Figure 4: Average length of stay (days) for all discharges and discharges up to 1 year by CHO area. Ireland 2023



References

Central Statistics Office (2023) Census of Population 2022, www.cso.ie.

Daly A Lovett H and Lynn E (2024) HRB StatLink Series 21 National Psychiatric Inpatient Reporting System (NPIRS) Annual Report on the *Activities of Irish Psychiatric Units and Hospitals 2023*. Dublin: Health Research Board.