

HRB Bulletin
National Psychiatric
Inpatient Reporting System

CHO 4 Bulletin
2023

Introduction

This bulletin is a synopsis of data for CHO 4 from the National Psychiatric Inpatient Reporting System (NPIRS) for 2023 and that reported in the *National Psychiatric Inpatient Reporting System (NPIRS) Annual Report on the Activities of Irish Psychiatric Units and Hospitals 2023* (Daly et al. 2024). The address from which a person was admitted was used to assign him/her to a CHO area and, thus, CHO area refers to the CHO area of residence of admissions. CHO 4 covers the counties of Cork and Kerry.

The rates reported below were calculated using the Census of Population 2022 (Central Statistics Office 2023) and all rates are per 100,000 total population. It was not possible to calculate rates for socio-economic groups for each of the CHO areas and, thus, proportions are presented for socio-economic group.

All and first admissions

There were 2,467 admissions for CHO 4 in 2023, a rate of 333.1 per 100,000, the highest amongst all CHO areas (Table 1). Admissions for CHO 4 accounted for 16% of all admissions to psychiatric units and hospitals in 2023. There were 994 first admissions, a rate of 134.2 per 100,000, and there were 1,473 re-admissions, representing a rate of 198.9 per 100,000.

Sex and age

Males accounted for 51% of all and 54% of first admissions. Males had a higher rate of all admissions than females, at 343.8 per 100,000, compared with 322.7 for females. Similarly, males had a higher rate of first admissions, at 146.9 per 100,000, compared with 121.8 for females.

The 25-34 year age group had the highest rate of all admissions for CHO 4, at 557.1 per 100,000, followed by the 20-24 year age group, at 451.2 per 100,000, and the 35-44 year age group, at 443.0 per 100,000. The 75 and over age group had the lowest rate of all admissions, at 308.3 per 100,000.

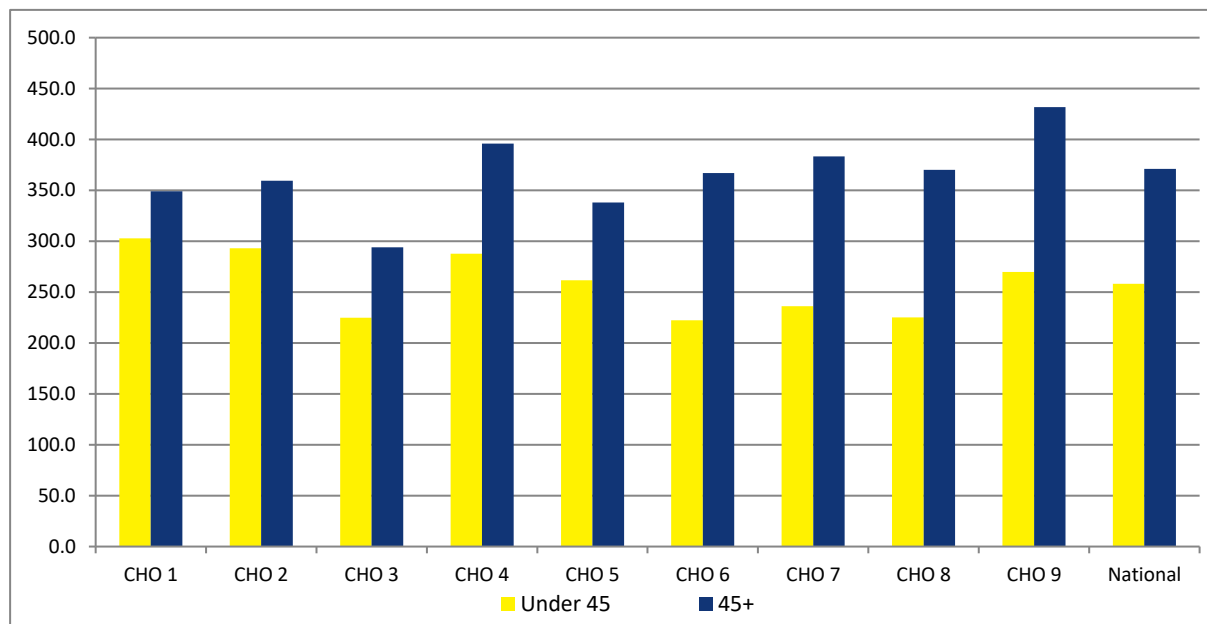
The 20-24 year age group had the highest rate of first admissions in CHO 4, at 251.2 per 100,000, followed by the 18-19 year age group, at 246.3, and the 25-34 year age group, at 218.4. The 75 and over age group had the lowest rate of first admissions, at 120.2 per 100,000.

Age groups were condensed into two groups: under 45 years and 45 years and over. The 45 year and over age group had the highest rate of admissions in all CHO areas, with rates ranging from 431.8 per 100,000 in CHO 9 to 293.9 in CHO 3 (Figure 1). In CHO 4 the rate of admission for the 45 year and over age group was 395.9 per 100,000, higher than that for the under 45 year age group, at 287.7.

Table 1: CHOs. All and first admissions. Sex. Ireland 2023. Rates per 100,000 total population

	All			First		
	Male	Female	Total	Male	Female	Total
CHO 1	320.8	324.7	322.8	114.9	104.0	109.4
CHO 2	331.4	312.1	321.6	118.9	103.1	110.9
CHO 3	265.3	243.2	254.2	88.8	84.6	86.7
CHO 4	343.8	322.7	333.1	146.9	121.8	134.2
CHO 5	321.4	267.7	294.3	127.7	97.8	112.6
CHO 6	263.4	294.8	279.6	94.6	88.9	91.7
CHO 7	290.3	290.3	290.3	119.1	106.4	112.7
CHO 8	270.7	293.0	281.9	103.3	88.1	95.6
CHO 9	315.9	339.8	328.0	137.3	137.6	137.5
Total	305.4	301.8	303.6	120.6	106.3	113.4

Figure 1: All admissions by age category by CHO area. Ireland 2023. Rates per 100,000 total population



Marital status

Single persons accounted for 63% of all and 60% of first admissions for CHO 4; married persons accounted for almost 22% of all and 23% of first admissions; widowed persons accounted for almost 4% of all and 3% of first admissions; and divorced persons accounted for 4% of all and 3% of first admissions.

Socio-economic group

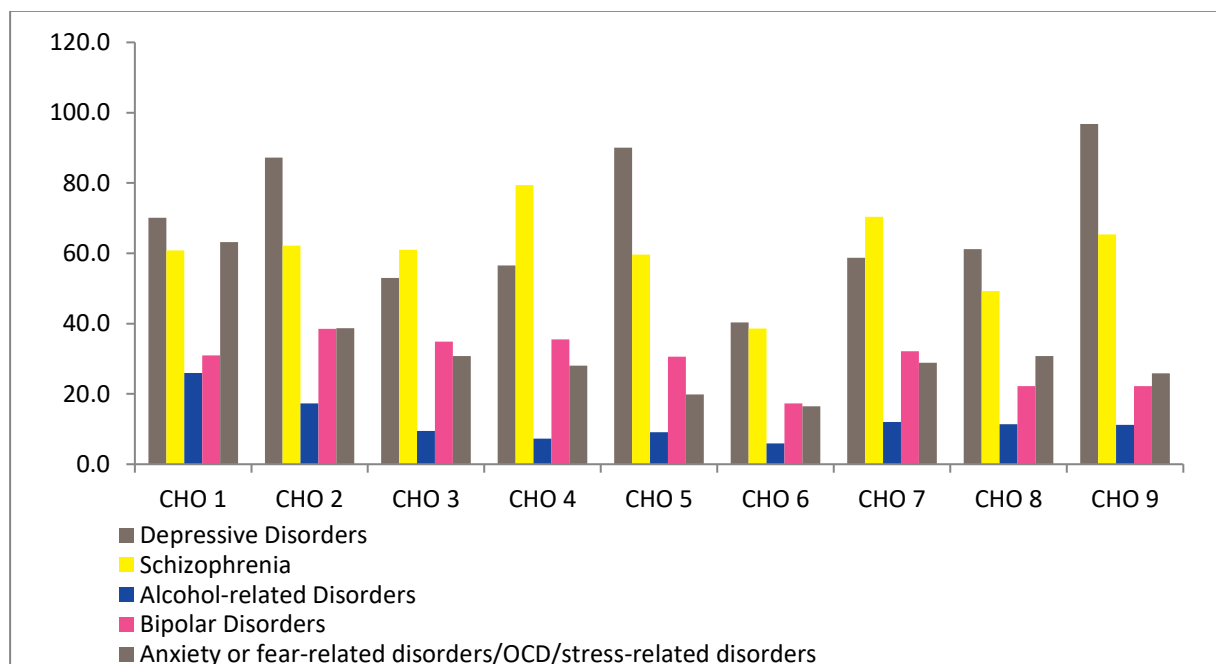
Eleven per cent of all admissions had a non-manual occupation, 8% were lower professionals, almost 6% were manual skilled, 4% were semi-skilled and a further 4% were unskilled. However, it is worth noting that 60% of returns for CHO 4 did not specify an occupation, making assignment to a socio-economic group impossible. Proportions for first admissions were somewhat similar.

Diagnosis

Schizophrenia accounted for 24% of all admissions and 16% of first admissions for CHO 4; depressive disorders accounted for 17% of all and 18% of all first admissions; bipolar accounted for 11% of all and 6% of first admissions, while personality and behavioural disorders accounted for 9% of all admissions and 6% of first admissions.

Schizophrenia had the highest rate of all admissions in CHO 4, at 79.4 per 100,000, followed by depressive disorders at 56.6, bipolar disorders, at 35.5, and personality and behavioural disorders, at 29.7(Figure 2). First admission rates in CHO 4 were highest for depressive disorders, at 24.0 per 100,000, followed schizophrenia, at 21.7 per 100,000, and anxiety or fear-related disorders/OCD/stress-related disorders, at 13.6.

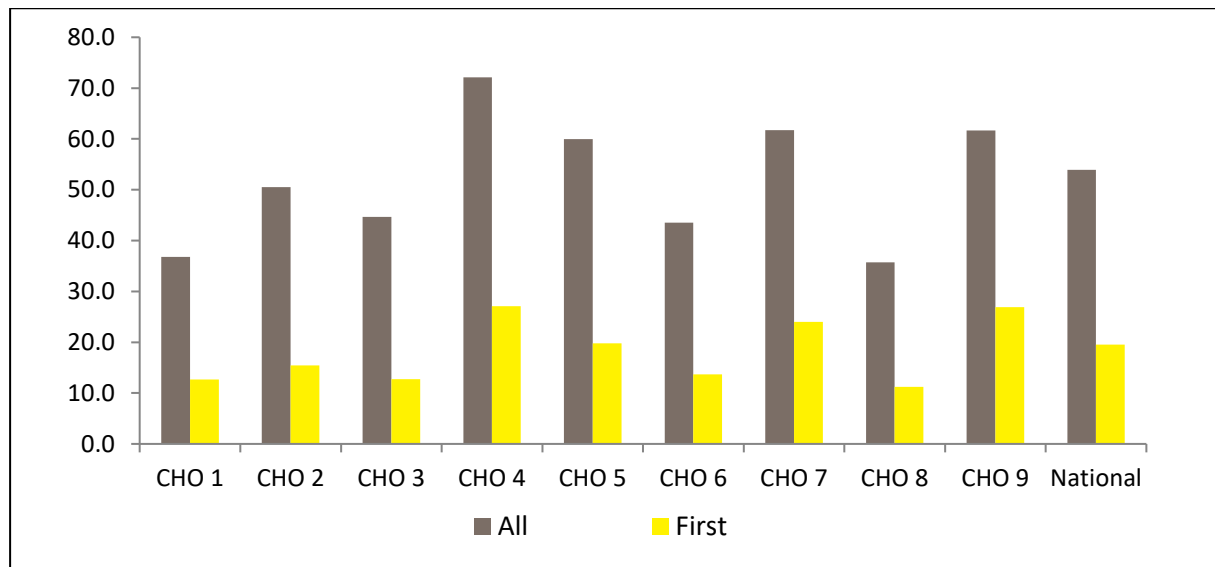
Figure 2: Admissions for selected diagnostic groups by CHO area. Ireland 2023. Rates per 100,000 total population



Legal status

Involuntary admissions accounted for 20% of all and 19% of first admissions for CHO 4. The rate of all involuntary admissions in CHO 4 was 72.1, the highest amongst all areas, while that for first admissions was 27.1 per 100,000, also the highest amongst all CHO areas (Figure 3).

Figure 3: All and first involuntary admissions by CHO area. Ireland 2023. Rates per 100,000 total population



Hospital type

Seventy-six per cent of all admissions for CHO 4 were to general hospital psychiatric units, almost 15% were to psychiatric hospitals/continuing care units and 10% were to independent/private and private charitable centres.

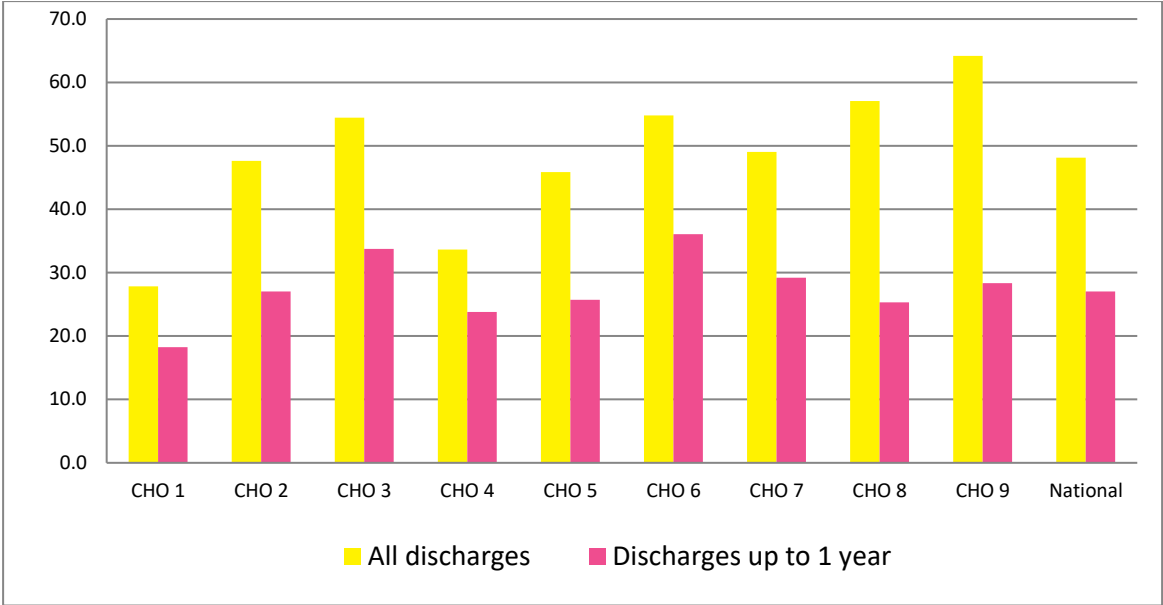
Discharges

There were 2,436 discharges (2,429 discharges and 7 deaths) for CHO 4 in 2023. Thirty per cent of discharges occurred within one week of admission, 21% occurred within one to two weeks and 23% occurred within two to four weeks of admission. Ninety-five per cent of discharges occurred within three months of admission. This is similar to the pattern observed nationally.

Discharges for CHO 4 accounted for 16% of all discharges and 11% of all inpatient days nationally. The average length of stay for all discharges for CHO 4 was 33.7 days (median 13 days) (Figure 4). This compares with the national average of 47.9 days (median 15 days).

When discharges with a length of stay of one year or more were excluded, discharges for CHO 4 accounted for 16% of discharges and 14% of inpatient days nationally. The average length of stay for discharges, excluding those with a length of stay of one year or more, was 23.8 days (median 13 days).

Figure 4: Average length of stay (days) for all discharges and discharges up to 1 year by CHO area. Ireland 2023



References

Central Statistics Office (2023) Census of Population 2022, www.cso.ie.

Daly A Lovett H and Lynn E (2024) HRB StatLink Series 21 National Psychiatric Inpatient Reporting System (NPIRS) Annual Report on the *Activities of Irish Psychiatric Units and Hospitals 2023*. Dublin: Health Research Board.