

**HRB Bulletin**  
National Psychiatric  
Inpatient Reporting System

**CHO 3 Bulletin**  
**2023**

## Introduction

This bulletin is a synopsis of data for CHO 3 from the National Psychiatric Inpatient Reporting System (NPIRS) for 2023 and that reported in the *National Psychiatric Inpatient Reporting System (NPIRS) Annual Report on the Activities of Irish Psychiatric Units and Hospitals 2023* (Daly et al. 2024). The address from which a person was admitted was used to assign him/her to a CHO area and, thus, CHO area refers to the CHO area of residence of admissions. CHO 3 covers the counties of Clare, North Tipperary and Limerick.

The rates reported below were calculated using the Census of Population 2023 (Central Statistics Office 2022) and all rates are per 100,000 total population. It was not possible to calculate rates for socio-economic groups for each of the CHO areas and, thus, proportions are presented for socio-economic group.

## All and first admissions

There were 1,050 admissions for CHO 3 in 2023, a rate of 254.2 per 100,000 (Table 1). Admissions for CHO 3 accounted for 7% of all admissions to psychiatric units and hospitals in 2023. There were 358 first admissions, a rate of 86.7 per 100,000, and 692 re-admissions, representing a rate of 167.5 per 100,000.

## Sex and age

Males accounted for 52% of all admissions and had a higher rate of both all and first admissions than females; all admission rates for males were 265.3, compared with 243.2 per 100,000 for females, while first admission rates for males were 88.8, compared with 84.6 per 100,000 for females (Table 1).

The 20-24 year age group had the highest rate of all admissions for CHO 3, at 484.0 per 100,000, followed by the 25-34 year age group, at 425.6, and the 65-74 year age group, at 358.2. The 18-19 year age group had the lowest rate of all admissions, at 194.7 per 100,000.

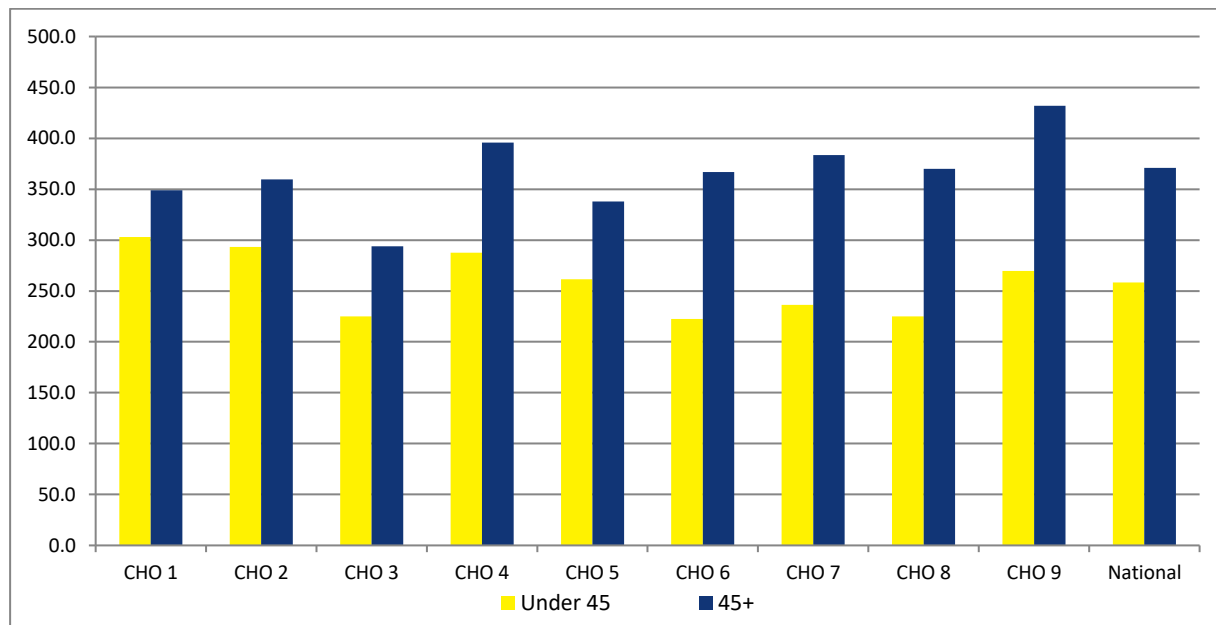
The 20-24 year age group had the highest rate of first admissions in CHO 3, at 178.9 per 100,000, followed by the 25-34 year age group, at 155.8, and the 18-19 year age group, at 148.3. The 55-64 year age group had the lowest rate of first admissions, at 69.3.

Age groups were condensed into two groups: under 45 years and 45 years and over. The 45 year and over age group had the highest rate of admissions in all CHO areas, with rates ranging from 431.8 per 100,000 in CHO 9 to 293.9 in CHO 3 (Figure 1). In CHO 3 the rate of admission for the under 45 year age group was 293.9 per 100,000.

**Table 1: CHOs. All and first admissions. Sex. Ireland 2023. Rates per 100,000 total population**

	All			First		
	Male	Female	Total	Male	Female	Total
CHO 1	320.8	324.7	322.8	114.9	104.0	109.4
CHO 2	331.4	312.1	321.6	118.9	103.1	110.9
CHO 3	265.3	243.2	254.2	88.8	84.6	86.7
CHO 4	343.8	322.7	333.1	146.9	121.8	134.2
CHO 5	321.4	267.7	294.3	127.7	97.8	112.6
CHO 6	263.4	294.8	279.6	94.6	88.9	91.7
CHO 7	290.3	290.3	290.3	119.1	106.4	112.7
CHO 8	270.7	293.0	281.9	103.3	88.1	95.6
CHO 9	315.9	339.8	328.0	137.3	137.6	137.5
<b>Total</b>	<b>305.4</b>	<b>301.8</b>	<b>303.6</b>	<b>120.6</b>	<b>106.3</b>	<b>113.4</b>

**Figure 1: All admissions by age category by CHO area. Ireland 2023. Rates per 100,000 total population**



**Marital status**

Single persons accounted for 56% of all admissions and 49% of first admissions for CHO 3; married persons accounted for 23% of all and 25% of first admissions; widowed persons accounted for 2% of all and 3% of first admissions; and divorced persons accounted for 2% of all and less than 1% of first admissions.

**Socio-economic group**

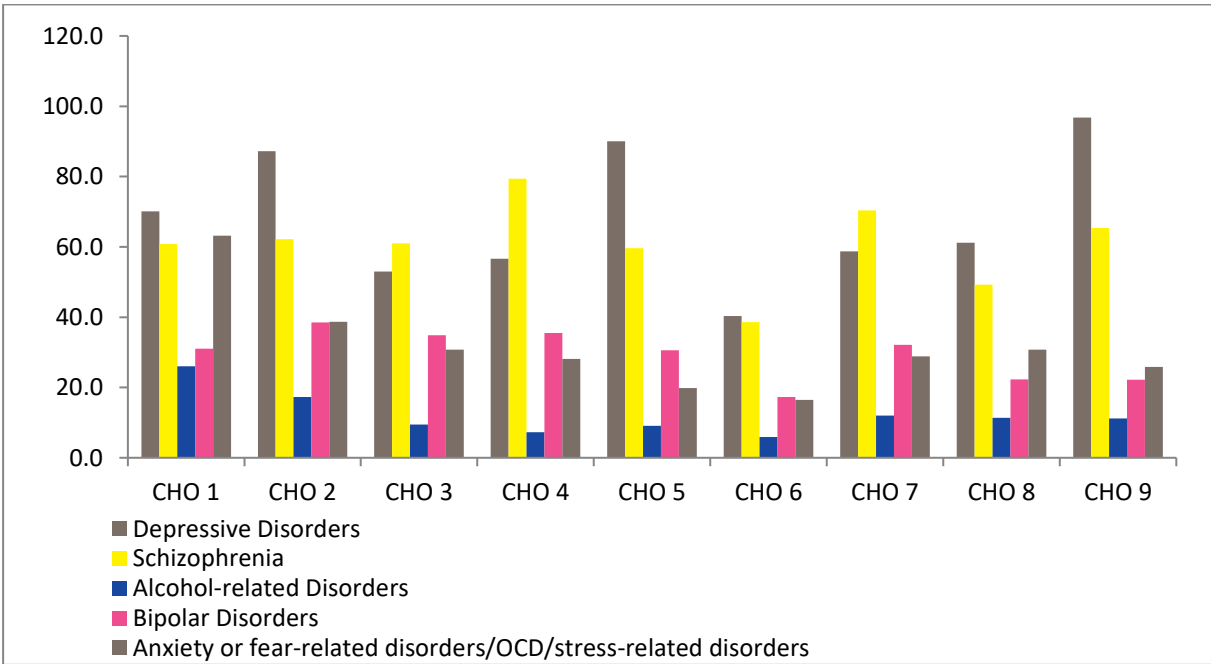
Seven percent of all admissions in CHO 3 had manual skilled occupations, 5% were unskilled, 5% were non manual and 3% were higher professionals. However, it is worth noting that 72% of returns for CHO 3 did not specify an occupation, making assignment to a socio-economic group impossible.

**Diagnosis**

Schizophrenia accounted for 24% of all admissions and 16% of first admissions for CHO 3; depressive disorders accounted for 21% of all admissions and 23% of first admissions, bipolar disorders accounted for 14% of all and 7% of first admissions, while anxiety or fear-related disorders/OCD/stress-related disorders accounted for 12% of all admissions, they accounted for 18% of first admissions for CHO 3.

All admission rates in CHO 3 were highest for schizophrenia, at 61.0 per 100,00 (Figure 2), followed by depressive disorders, at 53.0 and bipolar disorders, at 34.9. Depressive disorders had the highest rate of first admissions in CHO 3, at 20.3 per 100,000, followed by anxiety or fear-related disorders/OCD/stress-related disorders, at 15.5 per 100,000, and schizophrenia, at 13.8.

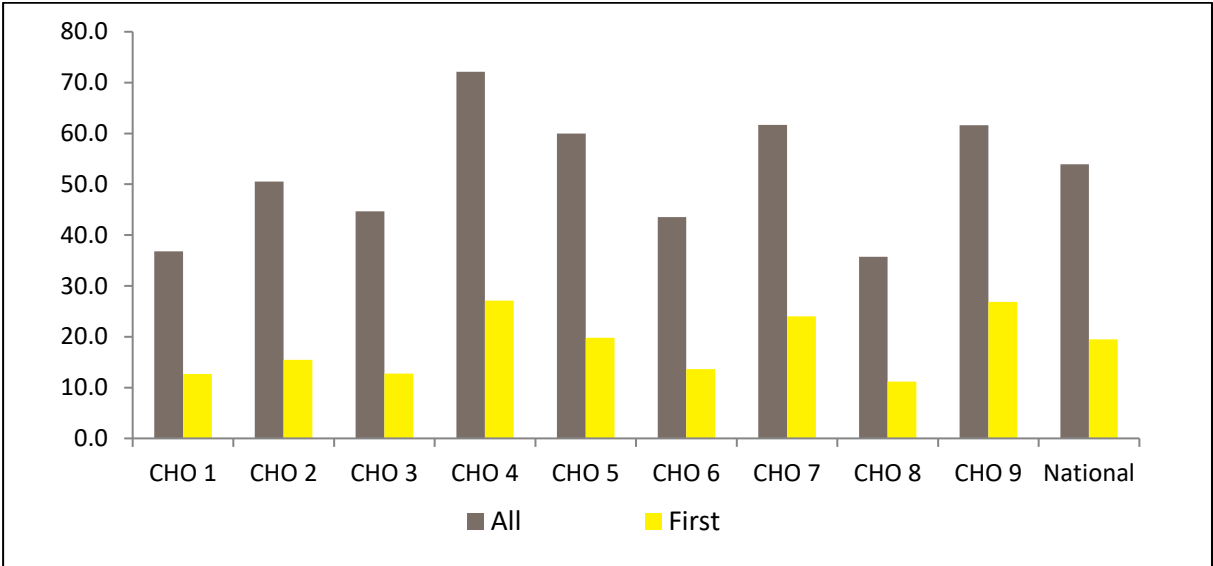
**Figure 2: Admissions for selected diagnostic groups by CHO area. Ireland 2023. Rates per 100,000 total population**



**Legal status**

Involuntary admissions accounted for 16% of all and 14% of first admissions for CHO 3. The rate of all involuntary admissions in CHO 3 was 44.7, while that for first admissions was 12.7 per 100,000, the second lowest first rate amongst all CHO areas (Figure 3).

**Figure 3: All and first involuntary admissions by CHO area. Ireland 2023. Rates per 100,000 total population**



**Hospital type**

Seventy-four per cent of all admissions for CHO 3 were to general hospital psychiatric units, 22% were to independent/private and private charitable centres and 4% were to psychiatric hospitals/continuing care units.

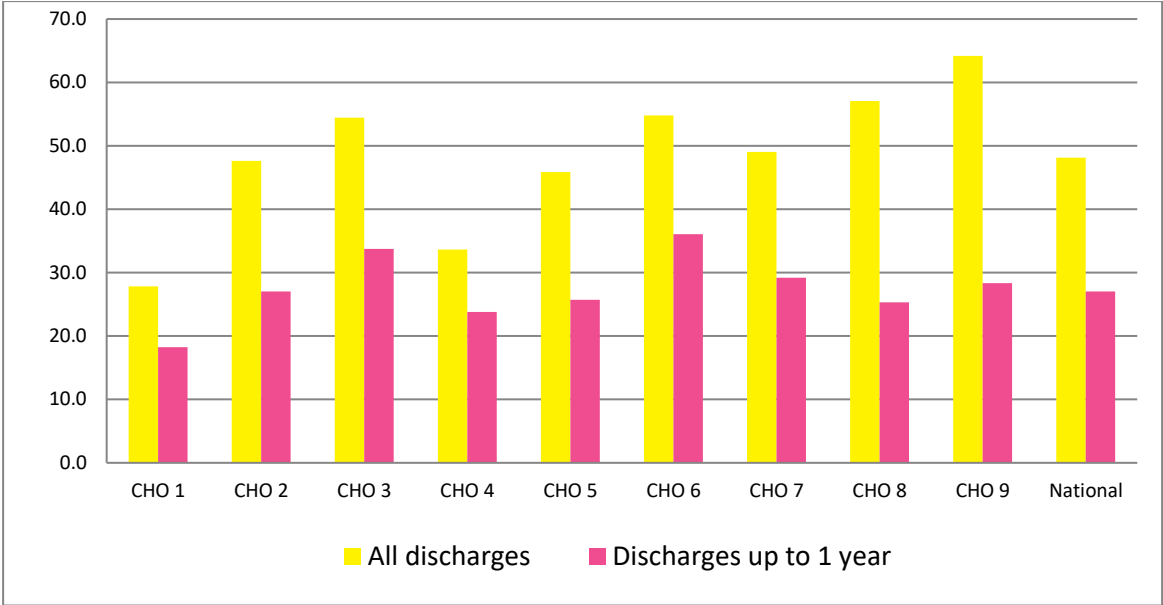
**Discharges**

There were 1,029 discharges (1,021 discharges and 8 deaths) for CHO 3 in 2023. Twenty-two per cent of discharges occurred within one week of admission, 16% occurred within one to two weeks and 21% occurred within two to four weeks of admission. Ninety-one per cent of discharges occurred within three months of admission. This is similar to the pattern observed nationally.

Discharges for CHO 3 accounted for 7% of all discharges and 8% of all inpatient days nationally. The average length of stay for all discharges for CHO 3 was 54.5 days (median 20 days) (Figure 4). This compares with the national average of 47.9 days (median 15 days).

When discharges with a length of stay of one year or more were excluded, discharges for CHO 3 accounted for 7% of discharges and 8% of inpatient days nationally. The average length of stay for discharges, excluding those with a length of stay of one year or more, was 33.8 days (median 19 days).

**Figure 4: Average length of stay (days) for all discharges and discharges up to 1 year by CHO area. Ireland 2023**



**References**

Central Statistics Office (2023) Census of Population 2022, [www.cso.ie](http://www.cso.ie).

Daly A, Lovett H and Lynn E (2024) HRB StatLink Series 13 National Psychiatric Inpatient Reporting System (NPIRS) Annual Report on the *Activities of Irish Psychiatric Units and Hospitals 2023*. Dublin: Health Research Board.