

HRB Bulletin
National Psychiatric
Inpatient Reporting System

CHO 2 Bulletin
2023

Introduction

This bulletin is a synopsis of data for CHO 2 from the National Psychiatric Inpatient Reporting System (NPIRS) for 2023 and that reported in the *National Psychiatric Inpatient Reporting System (NPIRS) Annual Report on the Activities of Irish Psychiatric Units and Hospitals 2023* (Daly et al. 2024). The address from which a person was admitted was used to assign him/her to a CHO area and, thus, CHO area refers to the CHO area of residence of admissions. CHO 2 covers the counties of Galway, Mayo and Roscommon.

The rates reported below were calculated using the Census of Population 2022 (Central Statistics Office 2023) and all rates are per 100,000 total population. It was not possible to calculate rates for socio-economic groups for each of the CHO areas and, thus, proportions are presented for socio-economic group.

All and first admissions

There were 1,563 admissions for CHO 2 in 2023, a rate of 321.6 per 100,000 (Table 1). Admissions for CHO 2 accounted for 10% of all admissions to psychiatric units and hospitals in 2023. There were 539 first admissions, a rate of 110.9 per 100,000, and 1,024 re-admissions, representing a rate of 210.7 per 100,000.

Sex and age

Fifty-one per cent of all admissions were male and males had a higher rate of all admissions at 331.4 per 100,000, compared with 312.1 for females (Table 1). Males also had a higher rate of first admissions than females, at 118.9 per 100,000, compared with 103.1 for females.

The 25-34 year group had the highest rate of all admissions for CHO 2, at 640.5 per 100,000, followed by the 20-24 year age group, at 523.2 and the 35-44 year age group, at 428.7 per 100,000. The 18-19 age group had the lowest rate of all admissions, at 226.0 per 100,000.

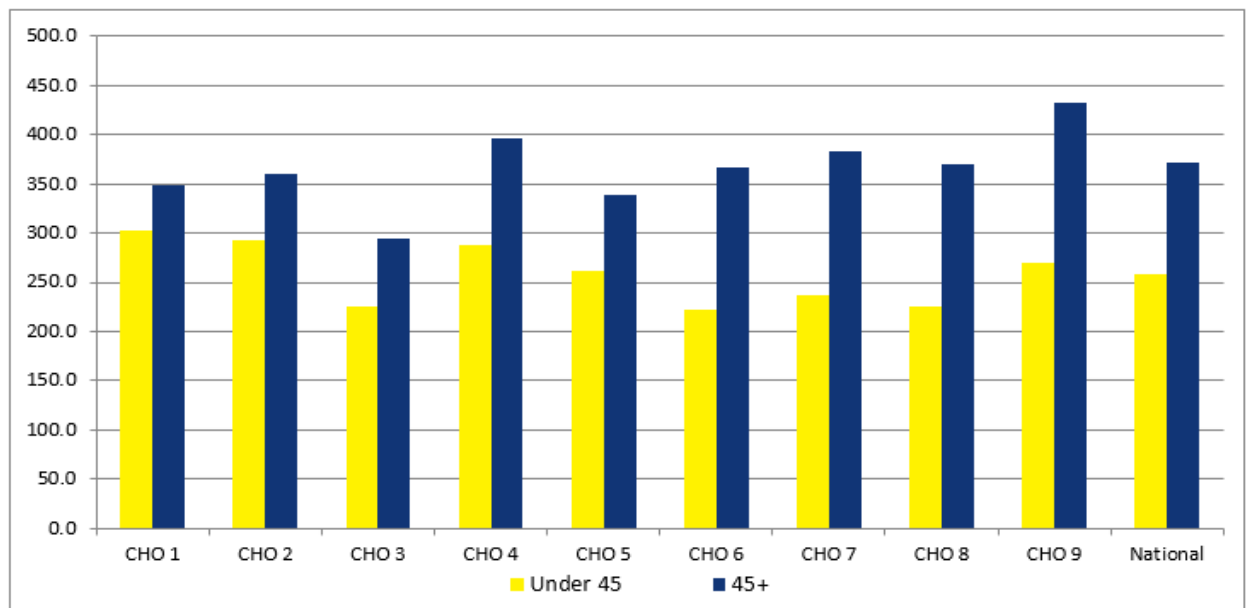
The 25-34 year age group also had the highest rate of first admissions for CHO 2, at 236.6 per 100,000, followed by the 20-24 year age group, at 206.4 and the 18-19 year age group, at 169.5 per 100,000. The 75 year and over age group had the lowest rate of first admissions, at 61.2 per 100,000.

Age groups were condensed into two groups: under 45 years and 45 years and over. The 45 year and over age group had the highest rate of admissions in all CHO areas, with rates ranging from 431.8 per 100,000 in CHO 9 to 293.9 in CHO 3 (Figure 1). In CHO 2 the rate of admission for the 45 year and over age group was 359.5 per 100,000, while that for the under 45 year age group was 293.1.

Table 1: CHOs. All and first admissions. Sex. Ireland 2023. Rates per 100,000 total population

	All			First		
	Male	Female	Total	Male	Female	Total
CHO 1	320.8	324.7	322.8	114.9	104.0	109.4
CHO 2	331.4	312.1	321.6	118.9	103.1	110.9
CHO 3	265.3	243.2	254.2	88.8	84.6	86.7
CHO 4	343.8	322.7	333.1	146.9	121.8	134.2
CHO 5	321.4	267.7	294.3	127.7	97.8	112.6
CHO 6	263.4	294.8	279.6	94.6	88.9	91.7
CHO 7	290.3	290.3	290.3	119.1	106.4	112.7
CHO 8	270.7	293.0	281.9	103.3	88.1	95.6
CHO 9	315.9	339.8	328.0	137.3	137.6	137.5
Total	305.4	301.8	303.6	120.6	106.3	113.4

Figure 1: All admissions by age category by CHO area. Ireland 2023. Rates per 100,000 total population



Marital status

Single persons accounted for 65% of all and 60% of first admissions for CHO 2; married persons accounted for 23% of all and 27% of first admissions; divorced persons accounted for 3% of all and 3% of first admissions; and widowed persons accounted for 2% of both all and first admissions.

Socio-economic group

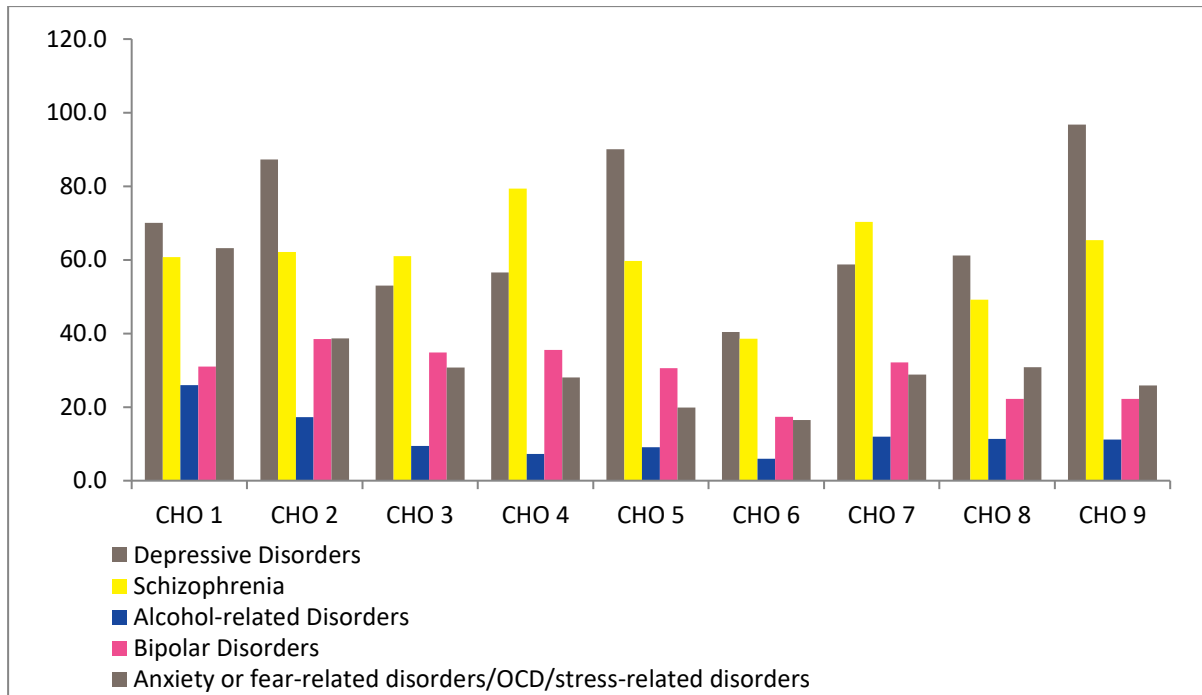
Eleven per cent of all admissions had non-manual occupations, almost 8% were lower professionals and 5% were unskilled. However, it is worth noting that 58% of returns for CHO 2 did not specify an occupation, making assignment to a socio-economic group impossible.

Diagnosis

Depressive disorders accounted for 27% of all and 30% of first admissions for CHO 2; schizophrenia accounted for 19% of all admissions and almost 15% of first admissions, while anxiety or fear-related disorders/OCD/stress-related disorders accounted for 12% of all and 15% of first admissions.

All and first admission rates in CHO 2 were highest for depressive disorders at 87.2 per 100,000 (figure 2) and 32.9 per 100,000 respectively. Schizophrenia had the second highest rate of all admissions in CHO 2, at 62.1, followed by anxiety or fear-related disorders/OCD/stress-related disorders, at 38.7, and bipolar disorders, at 38.5 per 100,000. Anxiety or fear-related disorders/OCD/stress-related disorders had the second highest rate of first admissions, at 16.7 followed closely by schizophrenia, at 16.1 per 100,000.

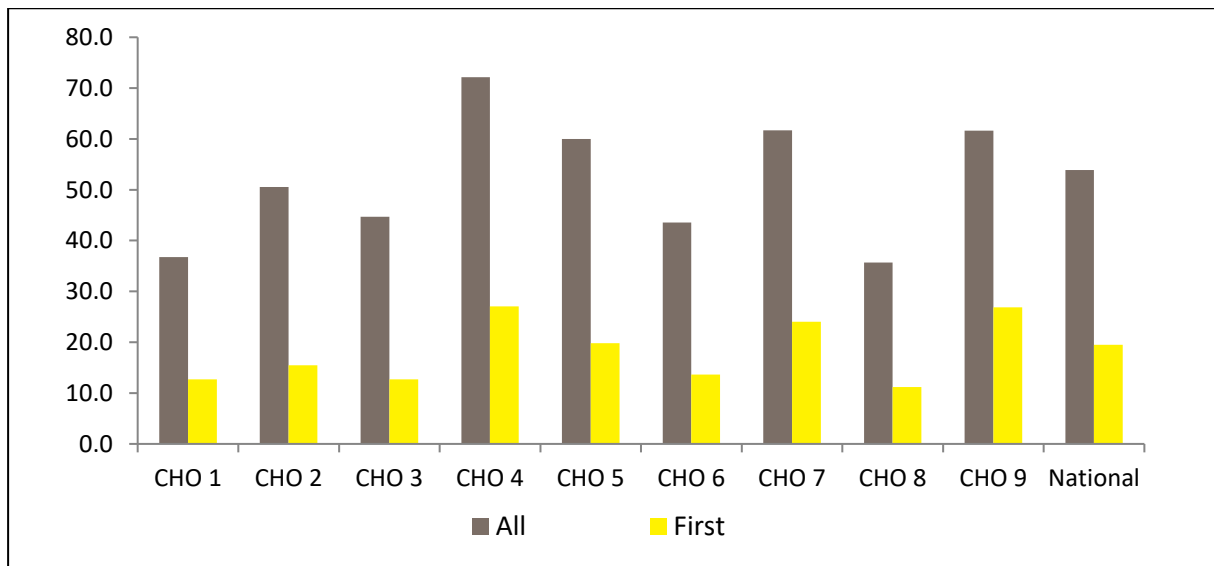
Figure 2: Admissions for selected diagnostic groups by CHO area. Ireland 2023. Rates per 100,000 total population



Legal status

Involuntary admissions accounted for 15% of all and 13% of first admissions for CHO 2. The rate of all involuntary admissions in CHO 2 was 50.5, while that for first admissions was 15.4 per 100,000 (Figure 3).

Figure 3: All and first involuntary admissions by CHO area. Ireland 2023. Rates per 100,000 total population



Hospital type

Eighty-three per cent of all admissions for CHO 2 were to general hospital psychiatric units, 14% were to independent/private and private charitable centres and 3% were to psychiatric hospitals/continuing care units.

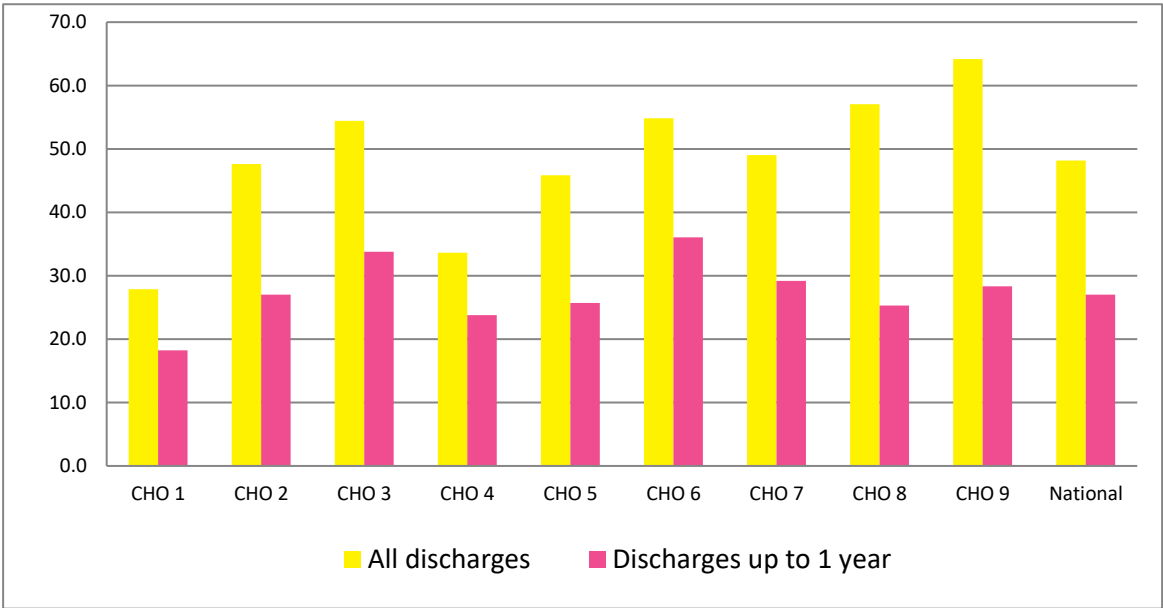
Discharges

There were 1,564 discharges (1,558 discharges and 6 deaths) for CHO 2 in 2023. Twenty-nine per cent of discharges occurred within one week of admission, 19% occurred within one to two weeks and 21% occurred within two to four weeks of admission. Ninety-four per cent of discharges occurred within three months of admission. This is similar to the pattern observed nationally.

Discharges for CHO 2 accounted for both 10% of all discharges and 10% of all inpatient days nationally. The average length of stay for all discharges for CHO 2 was 47.6 days (median 14 days) (Figure 4). This compares with the national average of 47.9 days (median 15 days).

When discharges with a length of stay of one year or more were excluded, discharges for CHO 2 accounted for 10% of discharges and 10% of inpatient days nationally. The average length of stay for discharges, excluding those with a length of stay of one year or more, was 27.0 days (median 14 days).

Figure 4: Average length of stay (days) for all discharges and discharges up to 1 year by CHO area. Ireland 2023



References

Central Statistics Office (2023) Census of Population 2022, www.cso.ie.

Daly A, Lovett H and Lynn E (2024) HRB StatLink Series 21 National Psychiatric Inpatient Reporting System (NPIRS) Annual Report on the *Activities of Irish Psychiatric Units and Hospitals 2023*. Dublin: Health Research Board.

