

HRB Bulletin
National Psychiatric
Inpatient Reporting System

CHO 1 Bulletin
2023

Introduction

This bulletin is a synopsis of data for CHO 1 from the National Psychiatric Inpatient Reporting System (NPIRS) for 2023 and that reported in the *National Psychiatric Inpatient Reporting System (NPIRS) Annual Report on the Activities of Irish Psychiatric Units and Hospitals 2023* (Daly et al. 2024). The address from where a person was admitted was used to assign him/her to a CHO area and, thus, CHO area refers to the CHO area of residence of admissions. CHO 1 covers the counties of Donegal, Sligo, Leitrim, Cavan and Monaghan.

The rates reported below were calculated using the Census of Population 2022 (Central Statistics Office 2023) and all rates are per 100,000 total population. It was not possible to calculate rates for socio-economic groups for each of the CHO areas and, thus, proportions are presented for socio-economic group.

All and first admissions

There were 1,354 admissions for CHO 1 in 2023, a rate of 322.8 per 100,000 (Table 1). This was the third highest rate amongst all CHO areas. Admissions for CHO 1 accounted for 9% of all admissions to psychiatric units and hospitals in 2023. There were 459 first admissions, a rate of 109.4 per 100,000, and 895 re-admissions, a rate of 213.4 per 100,000, the highest re-admission rate amongst all CHO areas.

Sex and age

There was a relatively equal split between the proportion of male and female admissions, with all admission rates, at 320.8 per 100,000 for males and 324.7 for females (Table 1). Males had a higher rate of first admissions, at 114.9 per 100,000, compared with 104.0 for females.

The 20-24 year age group had the highest rate of all admissions for CHO 1, at 651.1 per 100,000, followed by the 25-34 year age group, at 544.5, and the 35-44 year age group, at 522.7. The 75 year and over age group had the lowest rate of all admissions, at 222.8 per 100,000.

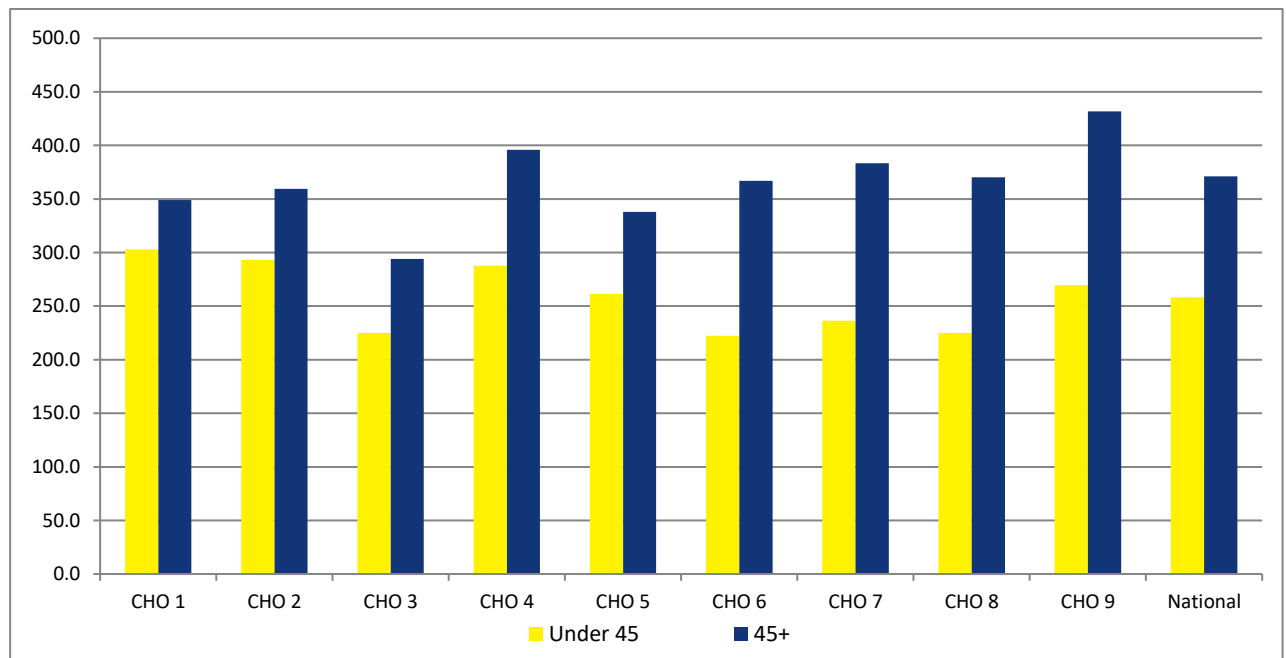
The 20-24 year age group had the highest rate of first admissions in CHO 1, at 320.9 per 100,000, followed by the 18-19 year age group, at 224.4, and the 25-34 year age group, at 198.8. The 75 year and over age group had the lowest rate of first admissions, at 74.3 per 100,000.

Age groups were condensed into two groups: under 45 years and 45 years and over. The 45 year and over age group had the highest rate of admissions in all CHO areas, with rates ranging from 431.8 per 100,000 in CHO 9 to 293.9 in CHO 3 (Figure 1). In CHO 1 the rate of admission for the 45 year and over age group was 349.0 per 100,000, higher than that for the under 45 year age group, at 302.9.

Table 1: CHOs. All and first admissions. Sex. Ireland 2023. Rates per 100,000 total population

	All			First		
	Male	Female	Total	Male	Female	Total
CHO 1	320.8	324.7	322.8	114.9	104.0	109.4
CHO 2	331.4	312.1	321.6	118.9	103.1	110.9
CHO 3	265.3	243.2	254.2	88.8	84.6	86.7
CHO 4	343.8	322.7	333.1	146.9	121.8	134.2
CHO 5	321.4	267.7	294.3	127.7	97.8	112.6
CHO 6	263.4	294.8	279.6	94.6	88.9	91.7
CHO 7	290.3	290.3	290.3	119.1	106.4	112.7
CHO 8	270.7	293.0	281.9	103.3	88.1	95.6
CHO 9	315.9	339.8	328.0	137.3	137.6	137.5
Total	305.4	301.8	303.6	120.6	106.3	113.4

Figure 1: All admissions by age category by CHO area. Ireland 2023. Rates per 100,000 total population



Marital status

Single persons accounted for 65% of all and 61% of first admissions for CHO 1; married persons accounted for 22% of all and 26% of first admissions; widowed persons accounted for 3% of all and 4% of first admissions; and divorced persons accounted for 2% of all and 1% of first admissions.

Socio-economic group

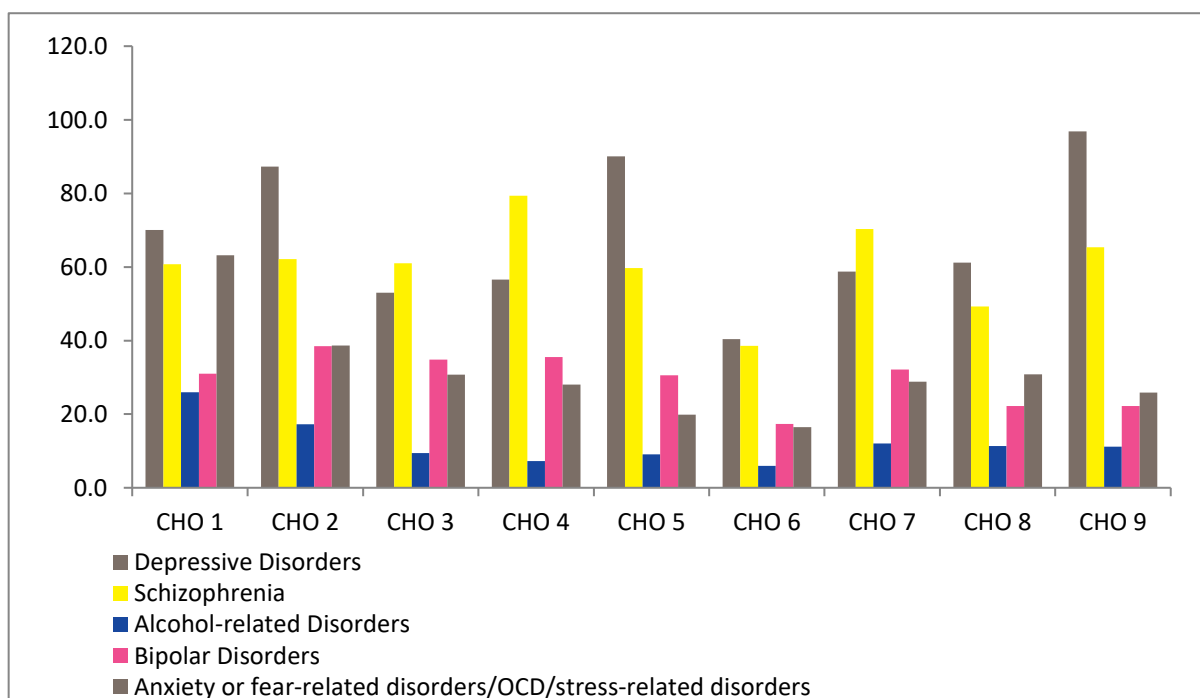
Almost 11% of all admissions and almost 9% of first admissions for CHO 1 had non-manual occupations, while lower professional accounted for 6% of all admissions and 8% of first admissions. Proportions for all and first admissions were similar for manual skilled at 4%, and for unskilled and semi-skilled at 3%. However, it is worth noting that 68% of returns for CHO 1 did not specify an occupation, making assignment to a socio-economic group impossible.

Diagnosis

Depressive disorders accounted for 22% of all admissions and 25% of first admissions for CHO 1; Anxiety or fear-related disorders/OCD/stress-related disorders accounted for almost 20% of all and 25% of first admissions; and schizophrenia accounted for 19% of all and 11% of first admissions.

All and first admission rates in CHO 1 were highest for depressive disorder at 70.1 and 27.4 per 100,000 respectively (Figure 2). Anxiety or fear-related disorders/OCD/stress-related disorders had the second highest rate for all admissions in CHO 1 at 63.2 per 100,000, followed by schizophrenia, at 60.8. Anxiety or fear-related disorders/OCD/stress-related disorders also had the second highest rate for first admissions in CHO 1, at 26.9 per 100,000, followed by schizophrenia, at 11.9 per 100,000.

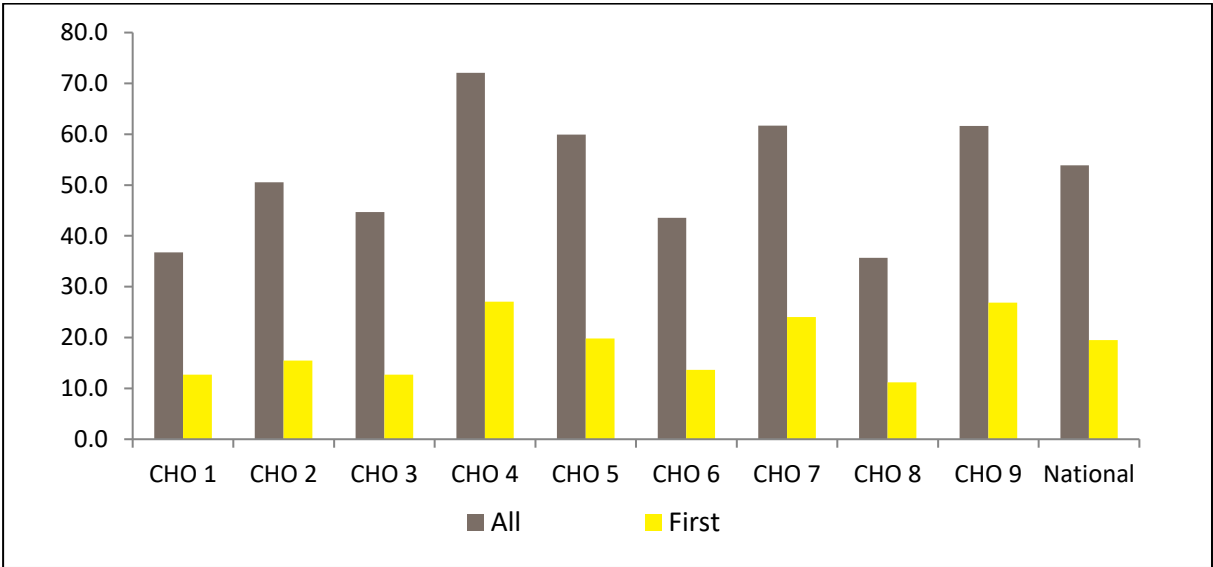
Figure 2: Admissions for selected diagnostic groups by CHO area. Ireland 2023. Rates per 100,000 total population



Legal status

Involuntary admissions accounted for 11% of both all and first admissions for CHO 1. The rate of all involuntary admissions in CHO 1 was 36.8, while that for first admissions was 12.7 per 100,000 (Figure 3).

Figure 3: All and first involuntary admissions by CHO area. Ireland 2023. Rates per 100,000 total population



Hospital type

Eighty-nine per cent of admissions for CHO 1 were to general hospital psychiatric units, 10% were to independent/private and private charitable centres and 1% were to psychiatric hospitals/continuing care units.

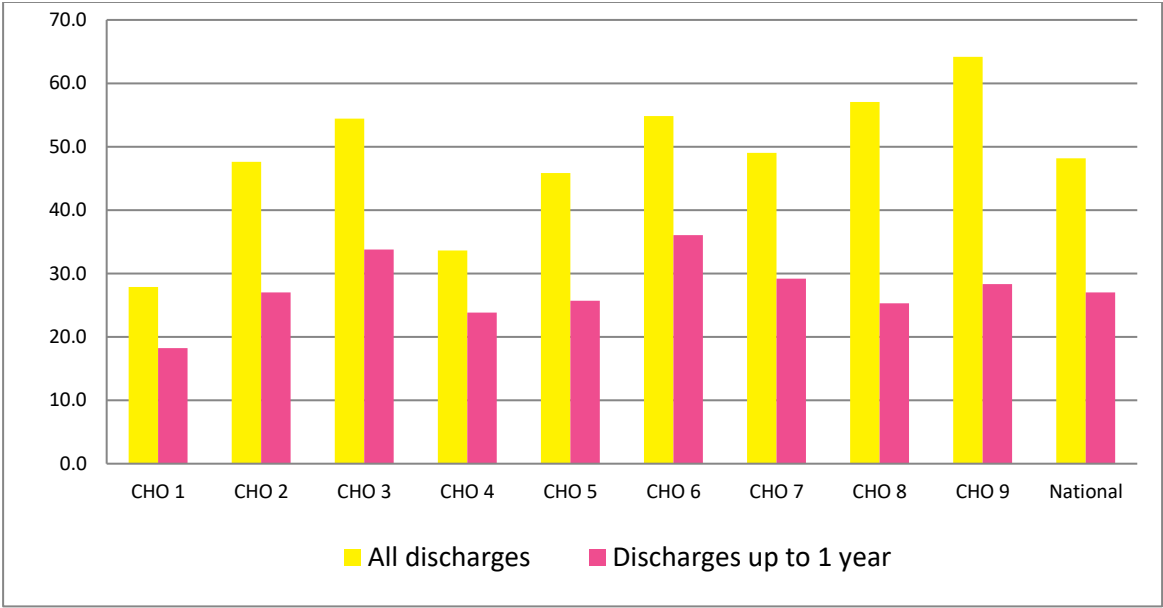
Discharges

There were 1,345 discharges (1,339 discharges and 6 deaths) for CHO 1 in 2023. Forty-three per cent of discharges occurred within one week of admission, 20% occurred within one to two weeks and 16% occurred within two to four weeks of admission. Ninety-seven per cent of discharges occurred within three months of admission, similar to that observed nationally (94%).

Discharges for CHO 1 accounted for 9% of all discharges and 5% of all inpatient days nationally. The average length of stay for all discharges for CHO 1 was 27.9 days (median 8 days) (Figure 4), the shortest average length of stay for all CHO areas. This compares with the national average of 47.9 (median 15 days).

When discharges with a length of stay of one year or more were excluded, discharges for CHO 1 accounted for 9% of discharges and 6% of inpatient days nationally. The average length of stay for discharges, excluding those with a length of stay of one year or more, was 18.2 days (median 8.0 days), the shortest average length of stay for all CHO areas (excluding non-residents).

Figure 4: Average length of stay (days) for all discharges and discharges up to 1 year by CHO area. Ireland 2023



References

Central Statistics Office (2023) Census of Population 2022, www.cso.ie.

Daly A, Lovett H and Lynn E (2024) HRB StatLink Series 21 National Psychiatric Inpatient Reporting System (NPIRS) Annual Report on the Activities of Irish Psychiatric Units and Hospitals 2023. Dublin: Health Research Board.