

2023

National Psychiatric Inpatient Reporting System 2023



HRB StatLink Series 21

Total admissions

15,939



15,585
adult psychiatry



46
adult forensic psychiatry



308
child and adolescent psychiatry

Adult admissions

15,631

admissions to adult units
(including the National Forensic Mental Health Services)

↓ 159 decrease from 2022



774,211
inpatient bed days in 2023



No fixed abode
302 admissions
increase from 291 in 2022



59%
single



46 yrs
mean age
at admission
(median 44 years)

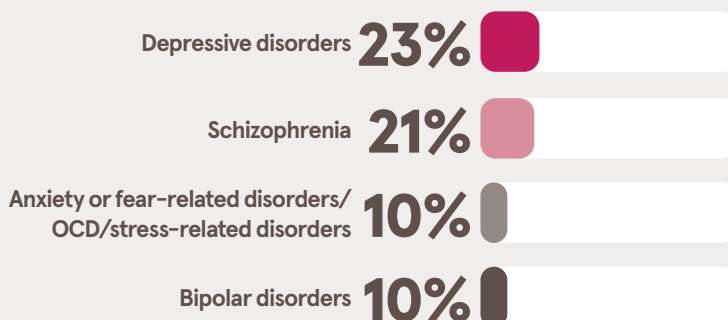


20-24 yrs
highest rate
of all admissions

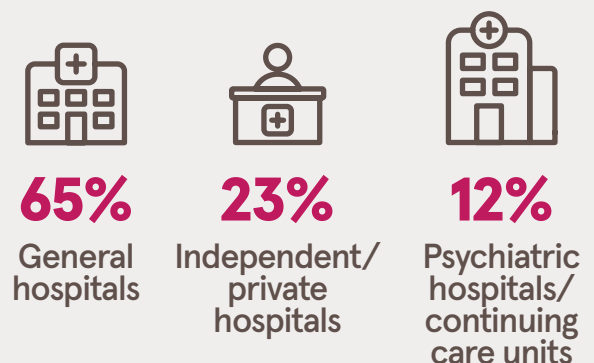


36%
unemployed

Main diagnoses



Hospital type



Research. Evidence. Action.

Child & Adolescent Admissions

322
admissions



308

admissions to child and adolescent inpatient units



14

admissions to adult units



72%
female



14 yrs
and under



87%
of admissions for u18s in 2023 were
discharged
in 2023

Main diagnoses



24%
Eating disorders



21%
Anxiety or fear-related disorders/OCD/stress-related disorders



24%
Depressive disorders



10%
Schizophrenia

Adult discharges

15,413
discharges



80
deaths



61%
of deaths were male



71%
of deaths aged 65+ yrs



92%
of all admissions in 2023 were discharged in 2023



47.9 days
average length of stay for all discharges (median 15 days)