

2023

National Ability Supports System (NASS)

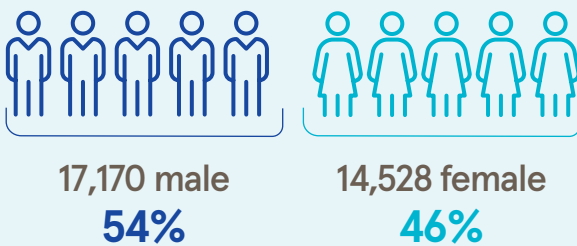
People engaging with disability services



31,698

 adult records reviewed on NASS

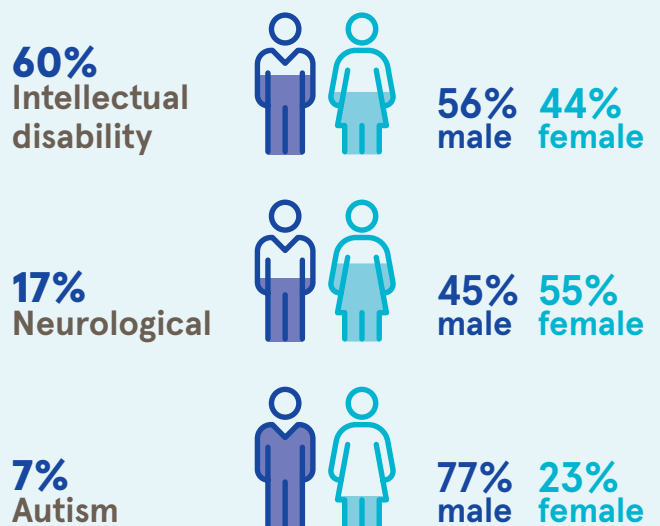
Demographics



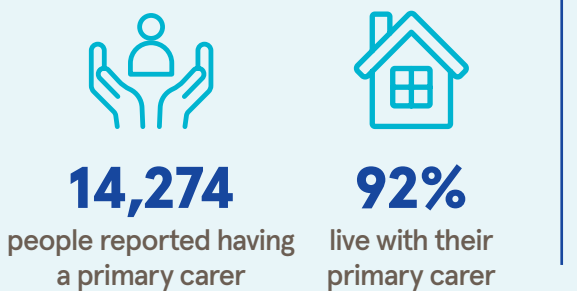
Age groups



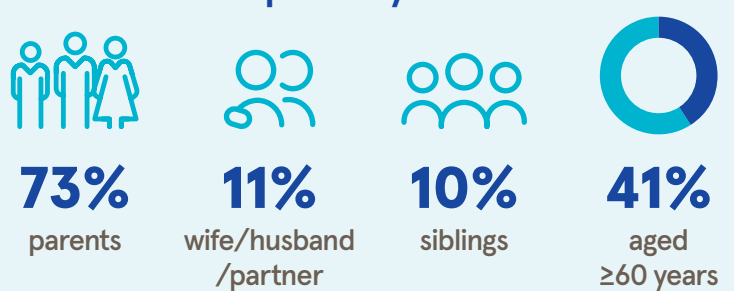
Primary disability



Primary carer



Of the primary carers:



Current services received

Adults and children*



7,892

lived in a residential setting



4,899

received home support



1,814

accessed a personal assistant



1,203

accessed day respite



3,954

availed of overnight respite
108,895 nights

Adults only



19,453

adults accessed day services



16,705

adults received support services

New services required

Adults and children*



1,952

residential places required



495

home support places required



199

personal assistant services required



1,212

people require overnight respite



3,119

people require a day service in 2024*

* Information provided by the HSE National Day Service Database.

Adults only

Main support services required:



3,110

adults require support services



Physiotherapy



Occupational Therapy



Speech and Language Therapy

* Children included are those who received residential, respite, home support and/or specialised support services from dedicated organisations. Information on the multidisciplinary supports received from Children's Disability Network Teams was not included.

Research. Evidence. Action.