

Summary Methodology for National Ability Supports System (NASS) General Information

The National Ability Supports System (NASS) is a national database that records detailed information about Health Service Executive (HSE) funded disability services that are received, or identified as required by a service provider, as a result of an intellectual disability; developmental delay; physical, sensory, neurological,¹ learning, and speech and/or language disabilities; or autism.

The purpose of NASS is to gather information in order to aid the planning, development, and organisation of HSE funded disability services.² A person is eligible to be registered on NASS if they receive or require (either currently or within the next 5 years) a HSE funded disability service as identified by their service provider.

National overall data, regional data and supplementary diagnosis specific data are produced on an annual basis.

Processing and Analysis

For new service users, data are collected by the service providers and returned to the NASS team in the National Health Information Systems of the HRB. Service providers are requested to collaborate with the service users when collating the data for NASS. Data are either entered directly onto NASS IT system (LINK) or returned electronically and uploaded by NASS HRB team onto LINK on an annual basis.

For existing service users on NASS, each record is reviewed on an annual basis and updated accordingly. Confirmation of review undertaken is logged on the system.

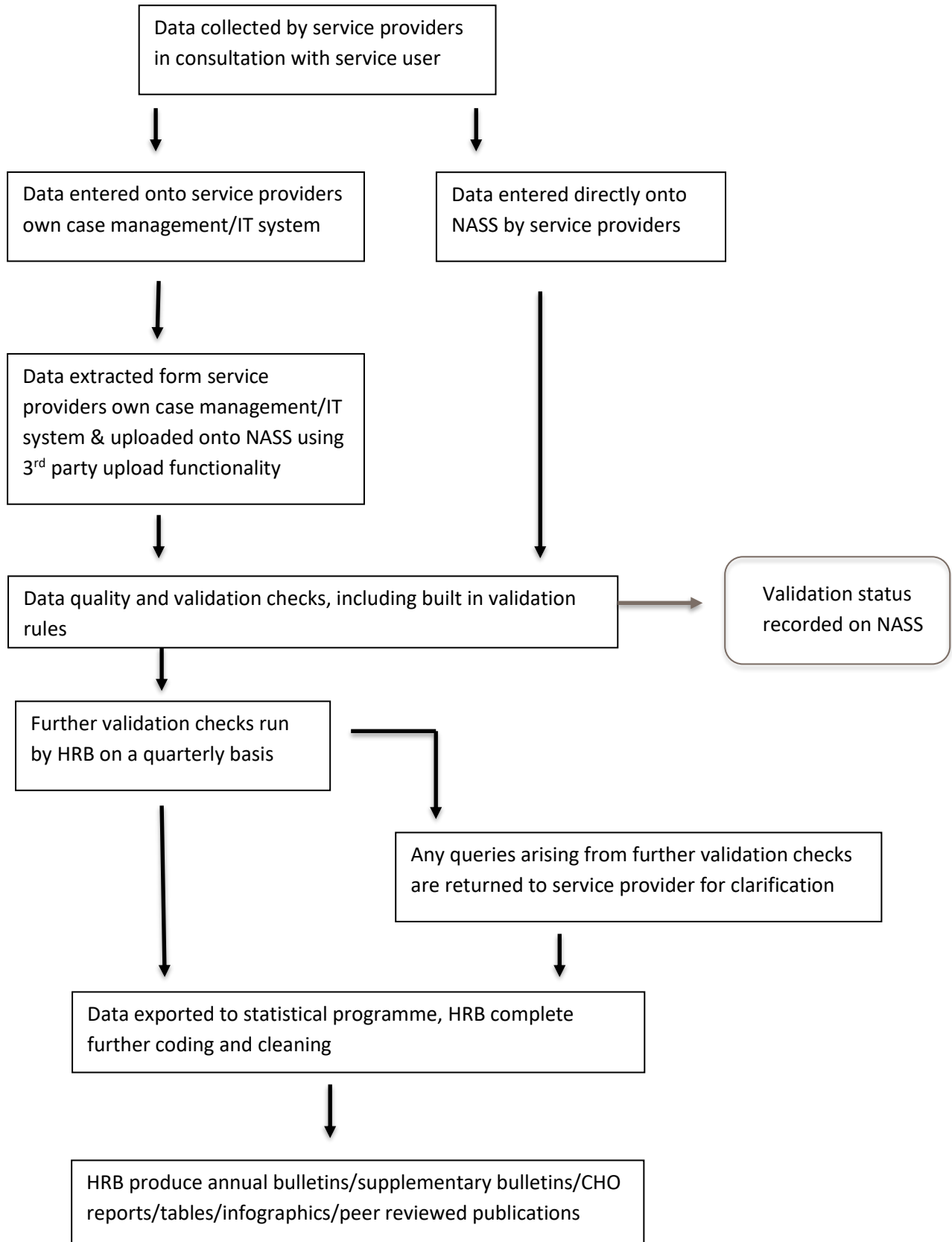
Statistical classifications and definitions are specified according to policy and practice within the disability service sector and/or on advice from the NASS advisory committee.

¹ A neurological disability can include epilepsy, spina bifida, Alzheimer's disease, multiple sclerosis, acquired brain injury, and Parkinson's disease. Applies This term applies to impairments of the nervous system.

² 'HSE funded disability' refers to the budget the HSE uses to fund services for people with disabilities. In 2023, the overall budget for disability services was €2.4 billion. See <https://www.gov.ie/en/press-release/59a35-minister-anne-rabbitte-announces-disability-services-budget-for-2023/>

Information data flow chart

The following map outlines the flow of data from the point of data collection by the service provider to the outputs such as the annual bulletins.



Dissemination

Data are published annually on the HRB website. Reports are in the form of PDF files, and supporting data is provided in both Excel and CSV format. In line with Government policy the NASS is committed to publishing open data so that its outputs are accessible to and reusable by the widest possible audience. If the data required is not available through the online publications, including tables, data can be requested by completing the National Health Information Systems (NHIS) [data request form](#) and accept the terms and conditions for use of NASS data. The form is in editable PDF format and can be returned to: nass@hrb.ie

Service providers can analysis they own data through an inbuilt reporting tool on NASS. Training is provided on how to use this reporting tool. More details analysis, is provided, on request, to service providers that participate on the NASS by contacting nass@hrb.ie

