

National Psychiatric In-Patient Reporting System (NPIRS) HSE West Bulletin 2010

August 2011

The Health Research Board (HRB) provides statistical reports and related database research on mental health service activity. Later this year, the Executive Summary report on in-patient activity from the National Psychiatric In-patient Reporting System (NPIRS) for 2010 will be published along with the full report on CD-ROM. In the interim, we provide summary information for each HSE area and in relation to the national picture. This bulletin presents data for HSE West. The Mental Health Information Systems (MHIS) Unit would like to thank services for providing quarterly returns – your cooperation has resulted in timelier reporting. We look forward to your continued support in the future.

Rosalyn Moran
Head of MHIS

Introduction

This bulletin is a synopsis of data for HSE West from the NPIRS for 2010 and that reported in the forthcoming *Activities of Irish Psychiatric Units and Hospitals 2010* (Daly and Walsh 2011).

The rates reported below were calculated using the Census of Population 2006 (Central Statistics Office 2007) and all rates are per 100,000 total population. Rates were not available for socio-economic groups for each of the HSE areas.

All and first admissions 2010 – HSE West

There were 4,691 admissions for HSE West in 2010, a rate of 462.8 per 100,000 (Figure 1). This was the second-highest rate of all admissions amongst all HSE areas. Admissions for HSE West accounted for 24% of all admissions.

There were 1,392 first admissions, a rate of 137.3 per 100,000, the lowest rate for first admissions amongst all HSE Areas along with Dublin Mid-Leinster. Re-admissions (3,299) accounted for 70% of all admissions, representing a rate of 325.5 per 100,000.

Gender and age

Males accounted for 52% of all admissions, a rate of 480.5, the second-highest amongst all HSE areas for all admissions. The rate of first admissions for males in HSE West was 148.2.



Figure 1 National and regional (HSE Areas) all and first admissions. Ireland 2010. Rates per 100,000 total population

The 35–44 year age group had the highest rate of all admissions in HSE West, at 697.8 per 100,000. The 45–54 year age group had the second-highest rate, at 696.0, followed by the 55–64 year age group, at 620.5. The 75 year and over age group had the lowest rate of admissions, at 444.6.

The 18–19 year age group had the highest rate of first admissions in HSE West, at 299.1, followed by the 20–24 year age group, at 239.9, and the 25–34 year age group, at 192.6. The 65–74 year age group had the lowest rate of first admissions, at 129.3.

Age groups were condensed into two groups: under 45 years and 45 years and over. The 45 year and over age group had the highest rate of admissions in all HSE areas, with rates ranging from 678.9 per 100,000 in Dublin North-East to 601.9 in HSE West (Figure 2).

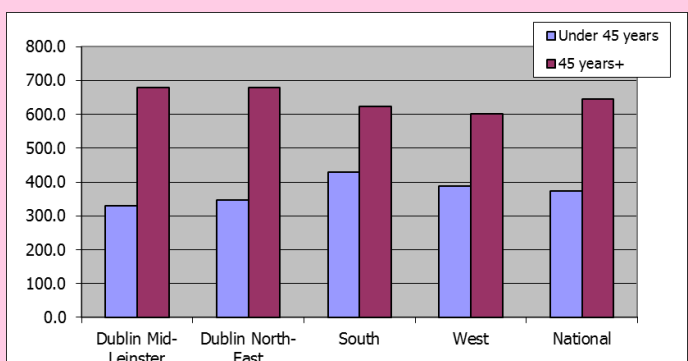


Figure 2 Health Service Executive Area. All admissions by age category. Ireland 2010. Rates per 100,000 total population

Marital status

Single persons accounted for 57% of all and 53% of first admissions in HSE West; married persons accounted for 25% of all and 30% of first admissions; widowed persons accounted for 5% of all and 5% of first admissions; and divorced persons accounted for 2% of all and 2% of first admissions.

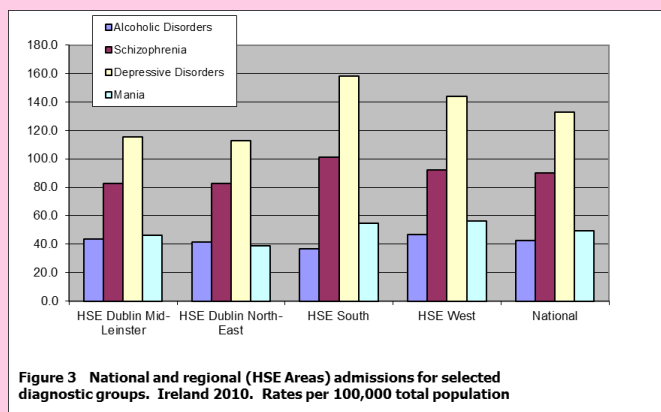
Socio-economic group

Nine per cent of all admissions had non-manual occupations, 8% were unskilled, 7% were manual skilled and 6% were lower professionals. However, it is worth noting that over half (56%) of returns for HSE West did not specify an occupation, making assignment to a socio-economic group impossible.

Diagnosis

Depressive disorders accounted for 31% of all admissions and 38% of first admissions for HSE West; schizophrenia accounted for 20% of all and 11% of first admissions; while alcoholic disorders accounted for 10% of all and 11% of first admissions.

All and first admission rates in HSE West were highest for depressive disorders, at 144.0 and 52.0 per 100,000, respectively (Figure 3). The rate for depressive disorders for first admissions was the highest amongst all HSE areas. Schizophrenia had the second-highest rate of all admissions in HSE West, at 92.0, followed by mania, at 56.3. Neuroses had the second-highest rate of first admissions in HSE West, at 15.3, followed by alcoholic disorders, at 15.1, and schizophrenia, at 15.0.



Legal status

Involuntary admissions accounted for almost 9% of all and 9% of first admissions. The rate of involuntary all admissions was 40.9, the second-highest amongst all HSE areas, while that for first admissions was 12.1, the lowest amongst all HSE areas along with that in Dublin Mid-Leinster (Figure 4).



Figure 4 Health Service Executive Areas. All and first involuntary admissions. Ireland 2010. Rates per 100,000 total population

Discharges (including deaths)

There were 4,747 discharges for HSE West in 2010.

Twenty-seven per cent of discharges occurred within one week of admission, 20% occurred within one to two weeks and 23% occurred within two to four weeks of admission. Ninety-four per cent of discharges occurred within three months of admission. This is similar to the pattern observed nationally.

Discharges for HSE West accounted for 24% of all discharges nationally (excluding those with a length of stay of one year or more) and 24% of in-patient days. The average length of stay was 25.5 days (median 14.0 days).

References

Central Statistics Office (2007) *Census 2006. Volume 1 – Population Classified by Area*. Dublin: Stationery Office.

Daly A and Walsh D (2011) *HRB Statistics Series 15 Activities of Irish Psychiatric Units and Hospitals 2010*. Dublin: Health Research Board.

Contact details for queries regarding this bulletin or the NPIRS:

Antoinette Daly

t +353 1 2345 142 or + 353 45 531246

e adaly@hrb.ie