

National Psychiatric In-Patient Reporting System (NPIRS) HSE South Bulletin 2011

October 2012

The Health Research Board (HRB) provides statistical reports and related database research on mental health service activity. Later this year, the Executive Summary report on in-patient activity from the National Psychiatric In-Patient Reporting System (NPIRS) for 2011 will be published along with the full report on CD-ROM. In the interim, we provide summary information for each HSE area and in relation to the national picture. This bulletin presents data for HSE South. The Mental Health Information Systems (MHIS) Unit would like to thank services for providing quarterly returns – your cooperation has resulted in timelier reporting. We look forward to your continued support in the future.

Rosalyn Moran
Head of MHIS

Introduction

This bulletin is a synopsis of data for HSE South from the NPIRS for 2011 and that reported in the report *Activities of Irish Psychiatric Units and Hospitals 2011* (Daly and Walsh 2012). The address from which a person was admitted was used to assign them to a HSE area and, thus, HSE area refers to the HSE area of residence of admissions.

The rates reported below were calculated using the Census of Population 2011 (Central Statistics Office) and all rates are per 100,000 total population. However, as the Small Area Population Statistics (SAPS) were not available at the time of production of this bulletin, it was not possible to calculate rates for age, marital status or socio-economic groups for each of the HSE areas. Thus, for age, the 2006 census of population figures have been used. Proportions are presented for marital status and socio-economic group.

All and first admissions 2011 – HSE South

There were 5,029 admissions for HSE South in 2011, a rate of 443.5 per 100,000 (Figure 1). This was the highest rate of all admissions amongst all HSE areas. Admissions for HSE South accounted for almost 27% (26.5%) of all admissions.

There were 1,657 first admissions, a rate of 146.1 per 100,000, the highest rate amongst all HSE areas. Re-admissions (3,372) accounted for 67% of all admissions, representing a rate of 297.4 per 100,000, the highest rate for re-admissions amongst all HSE areas.

Gender and age

Males accounted for 51% of all admissions, a rate of 456.1 – the highest rate for males amongst all HSE areas and higher than the national male rate (421.7). The rate of first admissions for males in HSE South was 151.6, the second-highest rate for males amongst all HSE areas.



Figure 1 National and regional (HSE Areas) all and first admissions. Ireland 2011. Rates per 100,000 total population

The 45–54 year age group had the highest rate of all admissions in HSE South, at 716.3 per 100,000. The 25–34 year age group had the second-highest rate, at 637.2, followed by the 35–44 year age group, at 634.4. The 75 year and over age group had the lowest rate of admissions, at 398.9.

The 20–24 year age group had the highest rate of first admissions in HSE South, at 274.1, followed by the 18–19 year age group, at 272.2, and the 25–34 year age group, at 209.9. The 55–64 year age group had the lowest rate of first admissions, at 143.2.

Age groups were condensed into two groups: under 45 years and 45 years and over. The 45 year and over age group had the highest rate of admissions in all HSE areas, with rates ranging from 702.4 per 100,000 in Dublin Mid-Leinster to 604.0 in HSE South (Figure 2). The rate of admissions for the 45 years and over age group in HSE South was 604.0, the lowest amongst all HSE areas for this age range, while that for the under 45 years age group was 390.7, the highest of all HSE areas for this age group.



Figure 2 Health Service Executive Areas. All admissions by age category. Ireland 2011. Rates per 100,000 total population

Marital status

Single persons accounted for almost 58% of all and 53% of first admissions in HSE South; married persons accounted for 25% of all and 31% of first admissions; widowed persons accounted for 4% of all and almost 5% of first admissions; and divorced persons accounted for 4% of all and 3% of first admissions.

Socio-economic group

Fifteen per cent of all admissions had non-manual occupations, 10% were manual skilled, 9% were semi-skilled and almost 9% were unskilled. However, it is worth noting that almost 42% of returns for HSE South did not specify an occupation, making assignment to a socio-economic group impossible.

Diagnosis

Depressive disorders accounted for 32% of all and almost 33% of first admissions for HSE South; schizophrenia accounted for 21% of all and 11% of first admissions; and alcoholic disorders accounted for 7% of all and 7% of first admissions.

All and first admission rates in HSE South were highest for depressive disorders, at 143.1 (Figure 3) and 47.4 per 100,000, respectively. The rate for all admissions was the highest rate for depressive disorders amongst all HSE areas. Schizophrenia had the second-highest rate of all admissions in HSE South, at 91.5, followed by mania, at 46.5. Schizophrenia had the second-highest rate of first admissions in HSE South, at 16.3, followed by neuroses, at 12.1.

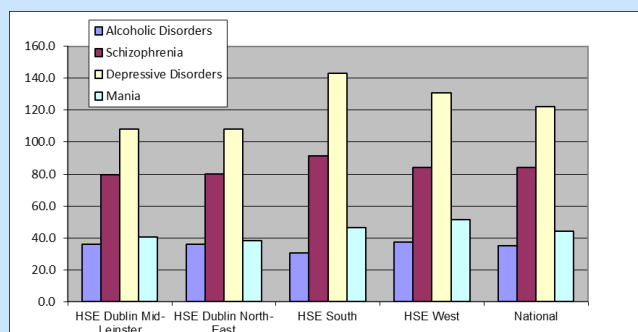


Figure 3 National and regional (HSE Areas) admissions for selected diagnostic groups. Ireland 2011. Rates per 100,000 total population

Legal status

Involuntary admissions accounted for 10% of all and

almost 10% of first admissions in HSE South.

The rate of involuntary all admissions was 44.5, the highest amongst all HSE areas along with that in HSE West, while that for first admissions was 14.8, the highest amongst all HSE areas for first admissions (Figure 4).

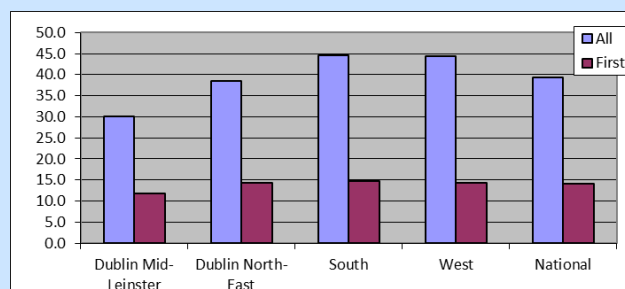


Figure 4 Health Service Executive Areas. All and first involuntary admissions. Ireland 2011. Rates per 100,000 total population

Discharges (including deaths)

There were 5,103 discharges for HSE South in 2011.

Twenty-nine per cent of discharges occurred within one week of admission, 19.5% occurred within one to two weeks and 20% occurred within two to four weeks of admission. Ninety-three per cent of discharges occurred within three months of admission. This is similar to the pattern observed nationally.

Discharges for HSE South accounted for 27% of all discharges nationally and 35% of in-patient days. The average length of stay was 84.1 days (median 14.0 days), the longest of all HSE areas.

When discharges with a length of stay of one year or more were excluded, discharges for HSE South accounted for 27% of discharges and 27% of in-patient days. The average length of stay for discharges, excluding those with a length of stay of one year or more, was 26.0 days (median 14 days), the second-longest average length of stay for all HSE areas.

References

Central Statistics Office (2007) *Census 2006. Volume 1 – Population Classified by Area*. Dublin: Stationery Office.

Central Statistics Office, www.cso.ie.

Daly A and Walsh D (2012) HRB Statistics Series 18 *Activities of Irish Psychiatric Units and Hospitals 2011*. Dublin: Health Research Board.

Contact details for queries regarding this bulletin or the NPIRS:

Antoinette Daly

t +353 1 2345 142 or + 353 45 531246

e adaly@hrb.ie