

## National Psychiatric In-Patient Reporting System (NPIRS) HSE Dublin North-East Bulletin 2013

August 2014

*The Health Research Board (HRB) provides statistical reports and related database research on mental health service activity. Later this year, the Main Findings (Summary) report on in-patient activity from the National Psychiatric In-Patient Reporting System (NPIRS) for 2013 will be published. In the interim, we provide summary information for each HSE area and in relation to the national picture. This bulletin presents data for HSE Dublin North-East. The NPIRS Team would like to thank services for providing quarterly returns – your cooperation has resulted in timelier reporting. We look forward to your continued support in the future.*

### Introduction

This bulletin is a synopsis of data for HSE Dublin North-East from the NPIRS for 2013 and that reported in *Activities of Irish Psychiatric Units and Hospitals 2013* (Daly and Walsh 2014). The address from which a person was admitted was used to assign him/her to a HSE area and, thus, HSE area refers to the HSE area of residence of admissions.

The rates reported below were calculated using the Census of Population 2011 (Central Statistics Office 2012) and all rates are per 100,000 total population. It was not possible to calculate rates for socio-economic groups for each of the HSE areas and, thus, proportions are presented for socio-economic group.

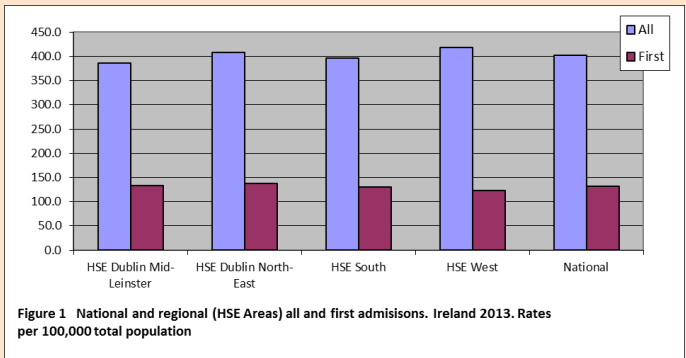
### All and first admissions 2013 – HSE Dublin North-East

There were 4,151 admissions for HSE Dublin North-East in 2013, a rate of 407.5 per 100,000 (Figure 1). This was the second-highest rate of all admissions amongst all HSE areas. Admissions for Dublin North-East accounted for 22.5% of all admissions.

There were 1,397 first admissions, a rate of 137.2 per 100,000, the highest rate amongst all HSE areas. Re-admissions (2,754) accounted for 66% of all admissions, representing a rate of 270.4 per 100,000, the second-highest rate for re-admissions amongst all HSE areas.

### Gender and age

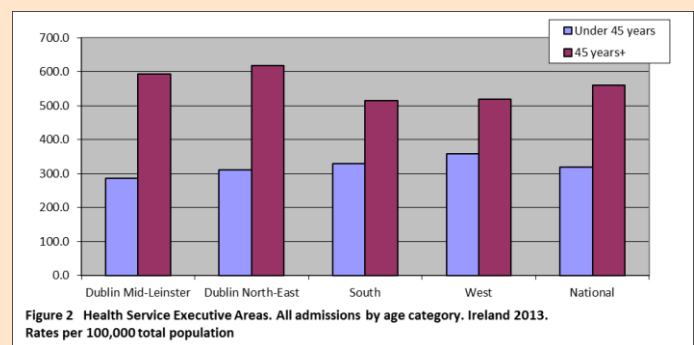
Females accounted for 52% of all admissions in Dublin North-East, a rate of 418.5. This was the highest rate for females amongst all HSE areas. Males had a higher rate of first admissions than females, at 145.3 for males and 129.2 for females.



The 55–64 year age group had the highest rate of all admissions in Dublin North-East, at 642.7 per 100,000, in keeping with the high national rate for this age group. The 45–54 year age group had the second-highest rate, at 634.5, followed by the 65–74 year age group, at 586.6. The 25–34 year age group had the lowest rate of admission, at 441.0, the second-lowest rate for this age group amongst all HSE areas.

The 18–19 year age group had the highest rate of first admissions in Dublin North-East, at 282.7, followed by the 75 year and over age group, at 233.7, and the 20–24 year age group, at 196.9. The 65–74 year age group had the lowest rate of first admissions, at 163.0.

Age groups were condensed into two groups: under 45 years and 45 years and over. The 45 year and over age group had the highest rate of admissions in all HSE areas, with rates ranging from 617.2 per 100,000 in Dublin North-East to 514.4 in HSE South (Figure 2). The rate of admissions for the 45 year and over age group (617.2) in Dublin North-East was twice that of the under 45 year age group (310.7).



### Marital status

Single persons accounted for over half (53.5%) of all and first (52%) admissions in Dublin North-East; married persons accounted for 25% of all and 26% of first admissions; widowed persons accounted for 4% of all and 5% of first admissions; divorced persons accounted for 5% of all and almost 4% of first admissions.

### Socio-economic group

Fourteen per cent of all admissions for Dublin North-East had non-manual occupations, 8% were lower professionals and 6% were manual skilled. However, it is worth noting that 54% of returns for Dublin North-East did not specify an occupation, making assignment to a socio-economic group impossible. Fifty-eight per cent of first admissions for Dublin North-East did not specify an occupation.

### Diagnosis

Depressive disorders accounted for 25% of all and 25% of first admissions for Dublin North-East; schizophrenia accounted for 19% of all and 15% of first admissions; mania accounted for 11% of all and 6% of first admissions; and alcoholic disorders accounted for 8% of all and 10% of first admissions.

All and first admission rates in Dublin North-East were highest for depressive disorders, at 100.9 (Figure 3) and 34.6 per 100,000, respectively. Schizophrenia had the second-highest rate of all admissions in Dublin North-East, at 78.4, followed by mania, at 44.9, and neuroses, at 35.5. Schizophrenia had the second-highest rate of first admissions in Dublin North-East, at 20.3, followed by neuroses, at 16.5, and alcoholic disorders, at 13.3.

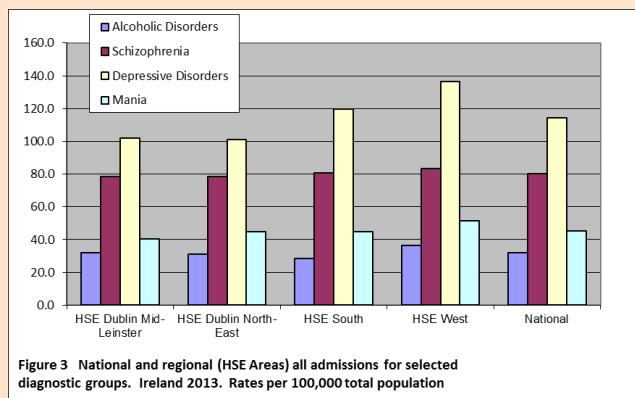


Figure 3 National and regional (HSE Areas) all admissions for selected diagnostic groups. Ireland 2013. Rates per 100,000 total population

### Legal status

Involuntary admissions accounted for 12% of all and 14% of first admissions in Dublin North-East. The proportion of all and first involuntary admissions in Dublin North-East was the highest of the four HSE areas. The rate for all involuntary admissions was 48.7, the highest amongst all HSE areas; while that for first admissions was 18.7 per 100,000, also the highest amongst all HSE areas (Figure 4).

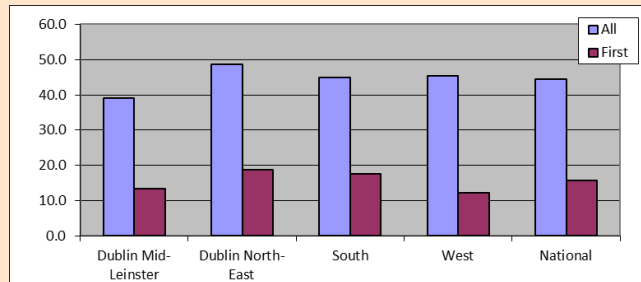


Figure 4 Health Service Executive Areas. All and first involuntary admissions. Ireland 2013. Rates per 100,000 total population

### Discharges (including deaths)

There were 4,140 discharges (including deaths) for HSE Dublin North-East in 2013.

Almost 31% of discharges occurred within one week of admission, 17% occurred within one to two weeks and 18.5% occurred within two to four weeks of admission. Ninety-four per cent of discharges occurred within three months of admission. This is similar to the pattern observed nationally.

Discharges for Dublin North-East accounted for almost 22% of all discharges nationally and 32% of in-patient days. The average length of stay for all discharges in Dublin North-East in 2013 was 100.8 days (median 14.0 days), the longest average length of stay amongst all HSE areas (excluding non-residents).

When discharges with a length of stay of one year or more were excluded, discharges for Dublin North-East accounted for 22% of discharges and 23% of in-patient days. The average length of stay for discharges, excluding those with a length of stay of one year or more, was 26.1 days (median 14 days), the second-longest average length of stay for all HSE areas (excluding non-residents).

### References

- Central Statistics Office (2012) Census of Population 2011, [www.cso.ie](http://www.cso.ie).
- Daly A and Walsh D (in press) *Activities of Irish Psychiatric Units and Hospitals 2013*. HRB Statistics Series 25. Dublin: Health Research Board.

Contact details for queries regarding this bulletin or the NPIRS:

#### Antoinette Daly

NPIRS Team  
National Health Information Systems

#### Health Research Board

#### An Bord Taighde Sláinte

Grattan House  
67–72 Lower Mount Street  
Dublin 2

t +353 1 234 5142

e [adaly@hrb.ie](mailto:adaly@hrb.ie)

w [www.hrb.ie](http://www.hrb.ie)