

National Psychiatric In-Patient Reporting System (NPIRS) HSE Dublin North-East Bulletin 2010

August 2011

The Health Research Board (HRB) provides statistical reports and related database research on mental health service activity. Later this year, the Executive Summary report on in-patient activity from the National Psychiatric In-patient Reporting System (NPIRS) for 2010 will be published along with the full report on CD-ROM. In the interim, we provide summary information for each HSE area and in relation to the national picture. This bulletin presents data for HSE Dublin North-East. The Mental Health Information Systems (MHIS) Unit would like to thank services for providing quarterly returns – your cooperation has resulted in timelier reporting. We look forward to your continued support in the future.

Rosalyn Moran
Head of MHIS

Introduction

This bulletin is a synopsis of data for HSE Dublin North-East from the NPIRS for 2010 and that reported in the forthcoming *Activities of Irish Psychiatric Units and Hospitals 2010* (Daly and Walsh 2011).

The rates reported below were calculated using the Census of Population 2006 (Central Statistics Office 2007) and all rates are per 100,000 total population. Rates were not available for socio-economic groups for each of the HSE areas.

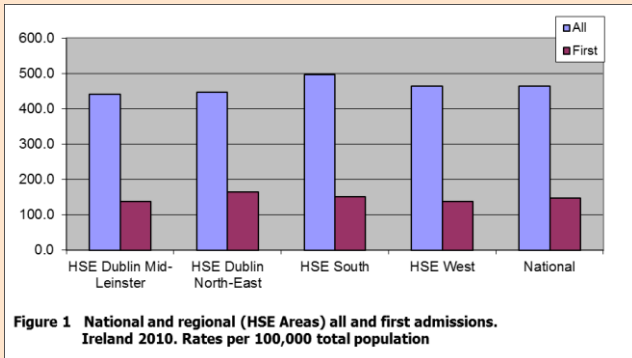
All and first admissions 2010 – HSE Dublin North-East

There were 4,137 admissions for HSE Dublin North-East in 2010, a rate of 447.2 per 100,000 (Figure 1). This was the second-lowest rate of all admissions amongst all HSE areas. Admissions for Dublin North-East accounted for 21% of all admissions.

There were 1,521 first admissions, a rate of 164.4 per 100,000, the highest rate amongst all HSE areas. Re-admissions (2,616) accounted for 63% of all admissions, representing a rate of 282.8 per 100,000, the lowest rate for re-admissions amongst all HSE areas.

Gender and age

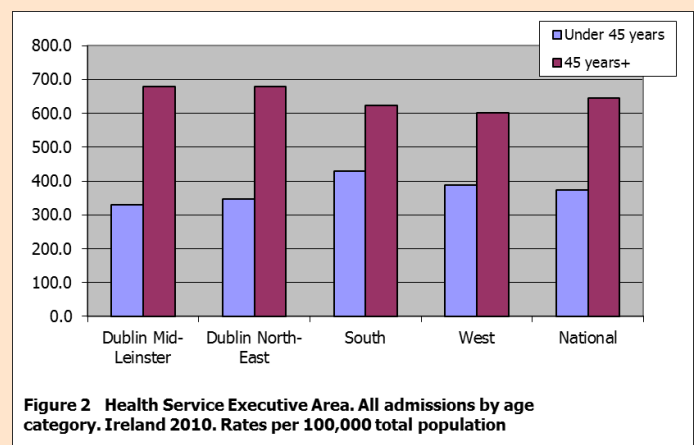
Females accounted for 51% of all admissions, a rate of 453.4. This was the second-lowest rate for females amongst all HSE areas, with HSE South having the highest, at 480.3. Males had a higher rate of first admissions than females, at 175.9 for males and 152.9 for females.



The 45–54 year age group had the highest rate of all admissions in Dublin North-East, at 777.6 per 100,000, in keeping with the high national rate for this age group. The 55–64 year age group had the second-highest rate, at 694.7, followed by the 35–44 year age group, at 670.6. The 18–19 year age group had the lowest rate of admission, at 372.7, the lowest rate for this age group amongst all HSE areas.

The 18–19 year age group had the highest rate of first admissions in Dublin North-East, at 265.7, followed by the 45–54 year age group, at 240.1, and the 35–44 year age group, at 236.9. The 75 year and over age group had the lowest rate of admission, at 165.1.

Age groups were condensed into two groups: under 45 years and 45 years and over. The 45 year and over age group had the highest rate of admissions in all HSE areas, with rates ranging from 678.9 per 100,000 in Dublin North-East to 601.9 in HSE West (Figure 2). The rate of admissions for the 45 year and over age group (678.9) in Dublin North-East was twice that of the under 45 year age group (346.7).



Marital status

Single persons accounted for half (51%) of all admissions and almost 49% of first admissions in Dublin North-East; married persons accounted for 28% of all and 30% of first admissions; widowed persons accounted for 3% of all and 2% of first admissions; divorced persons accounted for 5% of all and 4% of first admissions.

Socio-economic group

Twelve per cent of all admissions had non-manual occupations, 6% were manual skilled, 5% were lower professionals, 4% each were semi-skilled and unskilled. However, it is worth noting that almost 61% of returns for Dublin North-East did not specify an occupation, making assignment to a socio-economic group impossible.

Diagnosis

Depressive disorders accounted for 25% of all and 25% of first admissions for Dublin North-East; schizophrenia accounted for almost 19% of all and 14% of first admissions; and alcoholic disorders accounted for 9% of all and 10% of first admissions.

All and first admission rates in Dublin North-East were highest for depressive disorders, at 113.0 and 41.8 per 100,000, respectively (Figure 3). Schizophrenia had the second-highest rate of all admissions in Dublin North-East, at 82.8, followed by alcoholic disorders, at 41.7. Schizophrenia had the second-highest rate of first admissions in Dublin North-East, at 22.7, followed by neuroses, at 18.3.

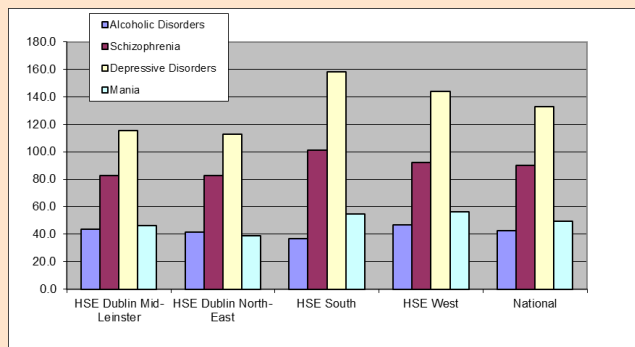


Figure 3 National and regional (HSE Areas) admissions for selected diagnostic groups. Ireland 2010. Rates per 100,000 total population

Legal status

Involuntary admissions accounted for 7% of all and 9% of first admissions. The rate of involuntary all admissions was 31.8, the second-lowest amongst all HSE areas, while that for first admissions was 15.3 per 100,000, the highest amongst all HSE areas (Figure 4).

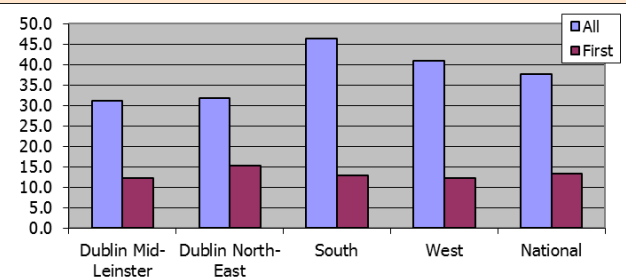


Figure 4 Health Service Executive Areas. All and first involuntary admissions. Ireland 2010. Rates per 100,000 total population

Discharges (including deaths)

There were 4,134 discharges for HSE Dublin North-East in 2010.

Thirty-two per cent of discharges occurred within one week of admission, 18% occurred within one to two weeks and 18% occurred within two to four weeks of admission. Ninety-four per cent of discharges occurred within three months of admission. This is similar to the pattern observed nationally.

Discharges for Dublin North-East accounted for 21% of all discharges nationally (excluding those with a length of stay of one year or more) and 21% of inpatient days. The average length of stay in Dublin North-East in 2010 was 25.8 days (median 13.0 days), the second-highest amongst all HSE areas.

References

Central Statistics Office (2007) *Census 2006. Volume 1 – Population Classified by Area*. Dublin: Stationery Office.

Daly A and Walsh D (2011) *HRB Statistics Series 15 Activities of Irish Psychiatric Units and Hospitals 2010*. Dublin: Health Research Board.

Contact details for queries regarding this bulletin or the NPIRS:

Antoinette Daly

t +353 1 2345 142 or + 353 45 531246

e adaly@hrb.ie