

National Psychiatric In-Patient Reporting System (NPIRS) HSE Dublin Mid-Leinster Bulletin 2010

August 2011

The Health Research Board (HRB) provides statistical reports and related database research on mental health service activity. Later this year, the Executive Summary report on in-patient activity from the National Psychiatric In-patient Reporting System (NPIRS) for 2010 will be published along with the full report on CD-ROM. In the interim, we provide summary information for each HSE area and in relation to the national picture. This bulletin presents data for HSE Dublin Mid-Leinster. The Mental Health Information Systems (MHIS) Unit would like to thank services for providing quarterly returns – your cooperation has resulted in timelier reporting. We look forward to your continued support in the future.

Rosalyn Moran
Head of MHIS

Introduction

This bulletin is a synopsis of data for HSE Dublin Mid-Leinster from the NPIRS for 2010 and that reported in the forthcoming *Activities of Irish Psychiatric Units and Hospitals 2010* (Daly and Walsh 2011).

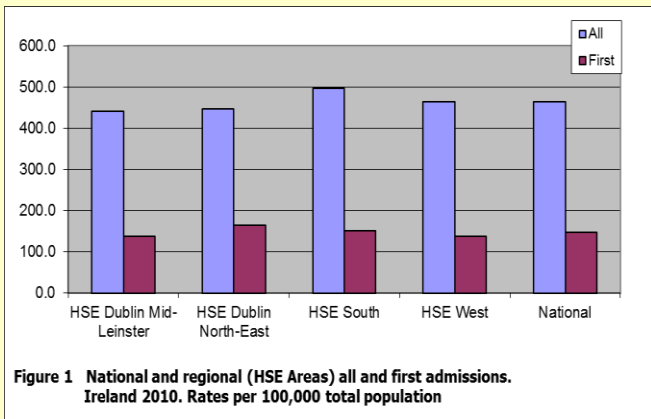
The rates reported below were calculated using the Census of Population 2006 (Central Statistics Office 2007) and all rates are per 100,000 total population. Rates were not available for socio-economic groups for each of the HSE areas.

All and first admissions 2010 – HSE Dublin Mid-Leinster

There were 5,363 admissions for HSE Dublin Mid-Leinster in 2010, a rate of 439.9 per 100,000, the lowest rate amongst all HSE areas (Figure 1). Admissions for Dublin Mid-Leinster accounted for 27% of all admissions to psychiatric units and hospitals in 2010. There were 1,674 first admissions, a rate of 137.3 per 100,000. Re-admissions (3,689) accounted for 69% of all admissions, representing a rate of 302.6 per 100,000.

Gender and age

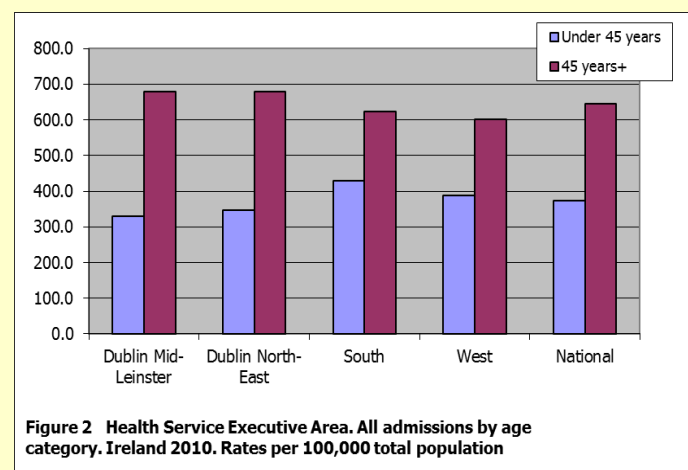
Females accounted for almost 53% of all admissions, a rate of 458.6. This was the second-highest rate for females in all HSE areas.



The 55–64 year age group had the highest rate of all admissions in Dublin Mid-Leinster, at 709.7 per 100,000, followed by the 45–54 year age group, at 690.5, and the 65–74 year age group, at 654.6. The 18–19 year age group had the lowest rate of admissions, at 436.0.

The 18–19 year age group had the highest rate of first admissions in Dublin Mid-Leinster, at 245.4, followed by the 75 year and over age group, at 222.8, and the 20–24 year age group, at 181.6. The 35–44 year age group had the lowest rate of admissions, at 162.3.

Age groups were condensed into two groups: under 45 years and 45 years and over. The 45 years and over age group had the highest rate of admissions in all HSE areas, with rates ranging from 678.9 per 100,000 in Dublin North-East to 601.9 in HSE west (Figure 2). The rate of admissions for the 45 year and over group in Dublin Mid-Leinster (678.2) was twice that of the under 45 year group (330.2).



Marital status

Single persons accounted for over half of all (53%) and first admissions (51%) in Dublin Mid-Leinster; married persons accounted for 28% of all and almost 30% (29.5%) of first admissions; widowed persons accounted for 5% of all and 6% of first admissions; and divorced persons accounted for 4% of all and 3% of first admissions.

Socio-economic group

Fifteen per cent of all admissions had non-manual occupations, 8% were lower professionals, 7% were manual skilled and 6% were semi-skilled. However, it is worth noting that almost 48% of returns for Dublin Mid-Leinster did not specify an occupation, making assignment to a socio-economic group impossible.

Diagnosis

Depressive disorders accounted for 26% of all admissions and 27% of first admissions for Dublin Mid-Leinster; schizophrenia accounted for 19% of all and 12% of first admissions; and alcoholic disorders accounted for 10% of all and 11% of first admissions.

All and first admission rates in Dublin Mid-Leinster were highest for depressive disorders, at 115.3 and 36.5 per 100,000, respectively (Figure 3). Schizophrenia had the second-highest rate of all admissions in Dublin Mid-Leinster, at 82.8, followed by mania, at 46.0. Neuroses had the second-highest rate of first admissions in Dublin Mid-Leinster, at 21.6, followed by schizophrenia, at 16.0.

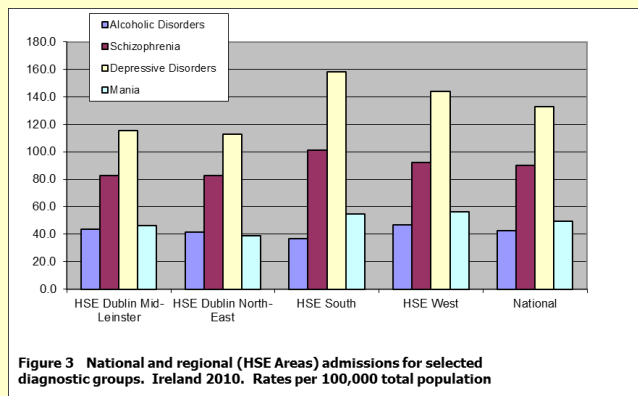


Figure 3 National and regional (HSE Areas) admissions for selected diagnostic groups. Ireland 2010. Rates per 100,000 total population

Legal status

Involuntary admissions accounted for 7% of all and 9% of first admissions. The rate of involuntary all admissions was 31.2, the lowest amongst all HSE areas, while that for first admissions was 12.1 per 100,000, also the lowest rate along with HSE west (Figure 4).

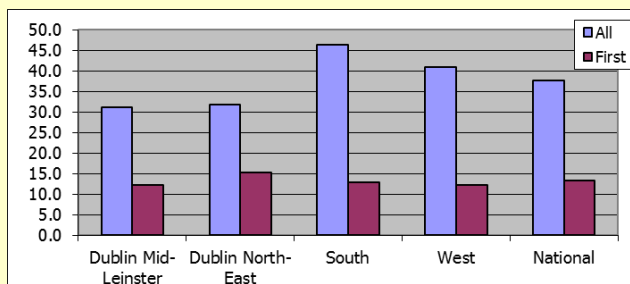


Figure 4 Health Service Executive Areas. All and first involuntary admissions. Ireland 2010. Rates per 100,000 total population

Discharges (including deaths)

There were 5,383 discharges for HSE Dublin Mid-Leinster in 2010.

Twenty-eight per cent of discharges occurred within one week of admission, 17% occurred within one to two weeks and almost 20% occurred within two to four weeks of admission. Ninety-four per cent of discharges occurred within three months of admission. This is similar to the pattern observed nationally.

Discharges for Dublin Mid-Leinster accounted for 27% of all discharges nationally (excluding those with a length of stay of one year or more) and 29% of in-patient days. The average length of stay for discharges for Dublin Mid-Leinster was 27.5 days (median 15 days), the longest average length of stay amongst all HSE areas and longer than the national average (26.0 days).

References

Central Statistics Office (2007) *Census 2006. Volume 1 – Population Classified by Area*. Dublin: Stationery Office.

Daly A and Walsh D (2011) *HRB Statistics Series 15 Activities of Irish Psychiatric Units and Hospitals 2010*. Dublin: Health Research Board.

Contact details for queries regarding this bulletin or the NPIRS:

Antoinette Daly

t +353 1 2345 142 or + 353 45 531246

e adaly@hrb.ie