

National Psychiatric In-Patient Reporting System (NPIRS) HSE Dublin Mid-Leinster Bulletin 2011

October 2012

The Health Research Board (HRB) provides statistical reports and related database research on mental health service activity. Later this year, the Executive Summary report on in-patient activity from the National Psychiatric In-Patient Reporting System (NPIRS) for 2011 will be published along with the full report on CD-ROM. In the interim, we provide summary information for each HSE area and in relation to the national picture. This bulletin presents data for HSE Dublin Mid-Leinster. The Mental Health Information Systems (MHIS) Unit would like to thank services for providing quarterly returns – your cooperation has resulted in timelier reporting. We look forward to your continued support in the future.

Rosalyn Moran
Head of MHIS

Introduction

This bulletin is a synopsis of data for HSE Dublin Mid-Leinster from the NPIRS for 2011 and that reported in the report *Activities of Irish Psychiatric Units and Hospitals 2011* (Daly and Walsh 2012). The address from which a person was admitted was used to assign them to a HSE area and, thus, HSE area refers to the HSE area of residence of admissions.

The rates reported below were calculated using the Census of Population 2011 (Central Statistics Office) and all rates are per 100,000 total population. However, as the Small Area Population Statistics (SAPS) were not available at the time of production of this bulletin, it was not possible to calculate rates for age, marital status or socio-economic groups for each of the HSE areas. Thus, for age, the 2006 census of population figures have been used. Proportions are presented for marital status and socio-economic group.

All and first admissions 2011 – HSE Dublin Mid-Leinster

There were 5,383 admissions for HSE Dublin Mid-Leinster in 2011, a rate of 398.3 per 100,000, the second-lowest rate amongst all HSE areas (Figure 1). Admissions for Dublin Mid-Leinster accounted for 28% of all admissions to psychiatric units and hospitals in 2011. There were 1,695 first admissions, a rate of 125.4 per 100,000. Re-admissions (3,688) accounted for almost 69% of all admissions, representing a rate of 272.9 per 100,000.

Gender and age

Females accounted for 51% of all admissions, a rate of 399.9. This was the second-lowest rate for females in all

HSE areas and higher than the male rate of 396.6. Males had higher first admissions rates, at 139.2 per 100,000 compared with 112.1 for females.



Figure 1 National and regional (HSE Areas) all and first admissions. Ireland 2011. Rates per 100,000 total population

The 55–64 year age group had the highest rate of all admissions in Dublin Mid-Leinster, at 744.5 per 100,000, followed by the 65–74 year age group, at 699.4, and the 45–54 year age group, at 693.1. The 18–19 year age group had the lowest rate of admissions, at 320.5.

The 75 year and over age group had the highest rate of first admissions in Dublin Mid-Leinster, at 220.9, followed by the 65–74 year age group, at 192.2, and the 18–19 year age group, at 190.6. The 55–64 year age group had the lowest rate of first admissions, at 168.7.

Age groups were condensed into two groups: under 45 years and 45 years and over. The 45 year and over age group had the highest rate of admissions in all HSE areas, with rates ranging from 702.4 per 100,000 in Dublin Mid-Leinster to 604.0 in HSE South (Figure 2). The rate of admissions for the 45 year and over group in Dublin Mid-Leinster (702.4) was over twice that of the under 45 year group (321.4).

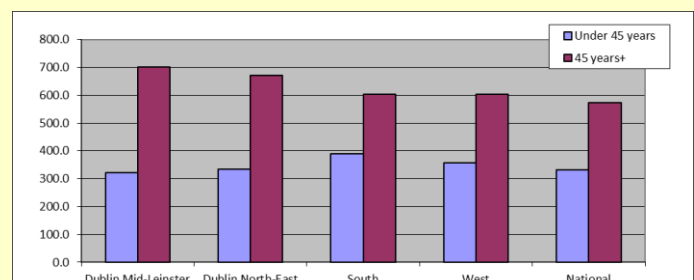


Figure 2 Health Service Executive Areas. All admissions by age category. Ireland 2011. Rates per 100,000 total population

Marital status

Single persons accounted for over half of all (51.5%) and almost half of first admissions (49%) in Dublin Mid-Leinster; married persons accounted for 30% of all and 33% of first admissions; widowed persons accounted for 5% of all and 5% of first admissions; and divorced persons accounted for 4% of all and 2% of first admissions.

Socio-economic group

Seventeen per cent of all admissions had non-manual occupations, 10% were lower professionals, 7% were manual skilled and 6% were semi-skilled. However, it is worth noting that almost 42% of returns for Dublin Mid-Leinster did not specify an occupation, making assignment to a socio-economic group impossible. Proportions for first admissions were quite similar.

Diagnosis

Depressive disorders accounted for 27% of all admissions and 28% of first admissions for Dublin Mid-Leinster; schizophrenia accounted for 20% of all and 12% of first admissions; and alcoholic disorders accounted for 9% of all and 11% of first admissions.

All and first admission rates in Dublin Mid-Leinster were highest for depressive disorders, at 108.2 (Figure 3) and 34.9 per 100,000, respectively. Schizophrenia had the second-highest rate of all admissions in Dublin Mid-Leinster, at 79.5, followed by mania, at 40.5. Neuroses had the second-highest rate of first admissions in Dublin Mid-Leinster, at 18.2, followed by schizophrenia, at 15.5.

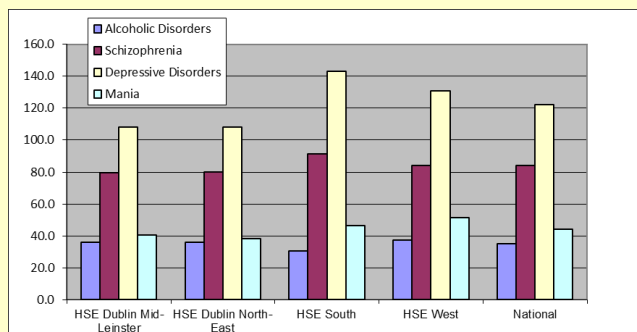


Figure 3 National and regional (HSE Areas) admissions for selected diagnostic groups. Ireland 2011. Rates per 100,000 total population

Legal status

Involuntary admissions accounted for 8% of all and 9% of first admissions. The rate of involuntary all admissions was 30.2, the lowest amongst all HSE areas, while that for first admissions was 11.8 per 100,000, also the lowest rate amongst all HSE areas (Figure 4).

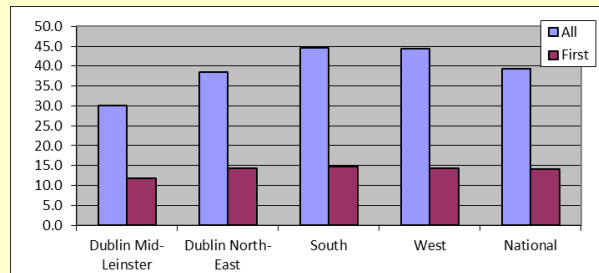


Figure 4 Health Service Executive Areas. All and first involuntary admissions. Ireland 2011. Rates per 100,000 total population

Discharges (including deaths)

There were 5,368 discharges for HSE Dublin Mid-Leinster in 2011.

Twenty-nine per cent of discharges occurred within one week of admission, 17% occurred within one to two weeks and 20% occurred within two to four weeks of admission. Almost 95% (94.5%) of discharges occurred within three months of admission. This is similar to the pattern observed nationally.

Discharges for Dublin Mid-Leinster accounted for 28% of all discharges nationally and 19% of in-patient days. The average length of stay for all discharges for Dublin Mid-Leinster was 43.1 days (median 15 days).

When discharges with a length of stay of one year or more were excluded, discharges for Dublin Mid-Leinster accounted for 28% of discharges and 29% of in-patient days. The average length of stay for discharges, excluding those with a length of stay of one year or more, was 26.7 days (median 15 days), the longest average length of stay for all HSE areas.

References

Central Statistics Office (2007) *Census 2006. Volume 1 – Population Classified by Area*. Dublin: Stationery Office.

Central Statistics Office, www.cso.ie

Daly A and Walsh D (2012) HRB Statistics Series 18 *Activities of Irish Psychiatric Units and Hospitals 2011*. Dublin: Health Research Board.

Contact details for queries regarding this bulletin or the NPIRS:

Antoinette Daly

t +353 1 2345 142 or + 353 45 531246

e adaly@hrb.ie