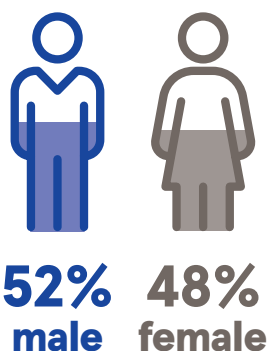
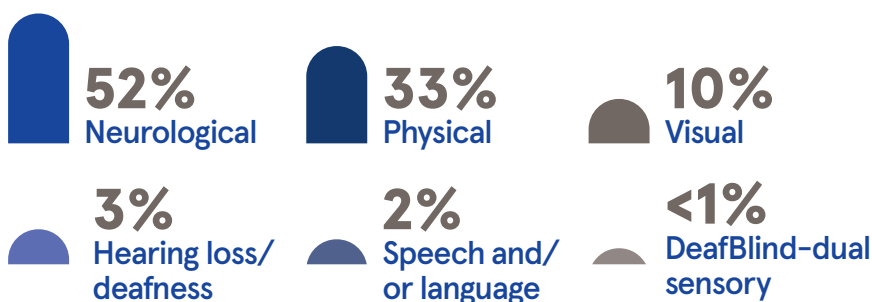


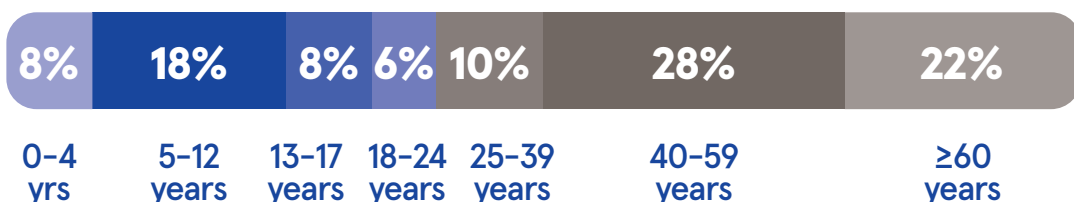
# 8,125

people with a  
primary physical or  
sensory disability

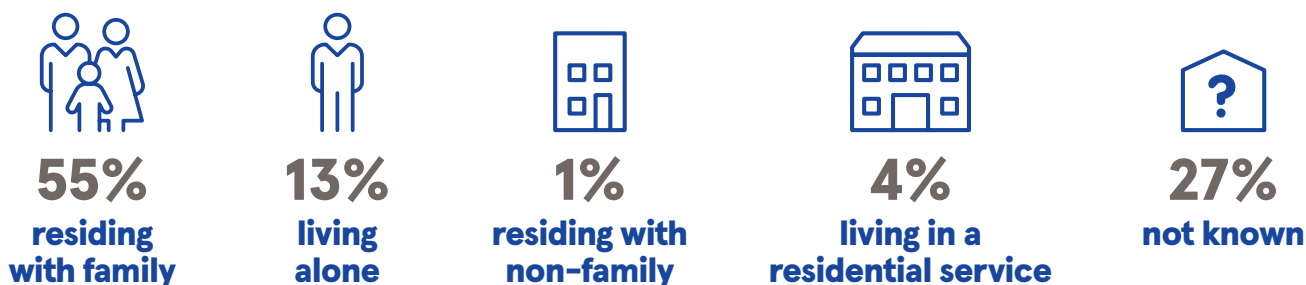
### Primary physical or sensory disability type:



### Age breakdown



### Living arrangements



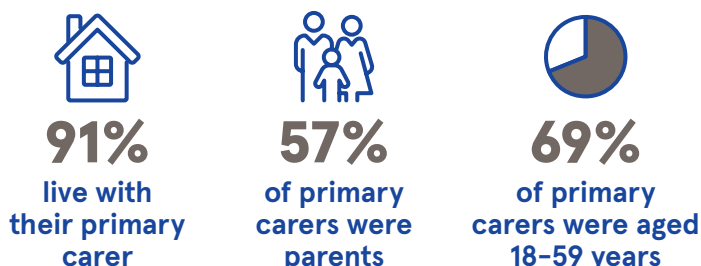
### Primary carer

Of those with a primary carer:



# 3,299

(43%) reported  
having a primary  
carer



# Services



**4%**  
accessed  
residential  
services



**21%**  
accessed  
day  
services



**1%**  
accessed  
overnight  
respite



**25%**  
accessed  
supports for  
daily living



**73%**  
accessed  
specialist  
supports



## Residential places

**323**  
currently accessed

**38**  
enhancement required

**59**  
new places required



## Day service places

**1,748**  
currently accessed

**167**  
enhancement required

**131**  
new places required



## Overnight respite places

**51**  
currently accessed

**22**  
enhancement required

**75**  
new places required



## Supports for daily living

**2,291**  
currently accessed

**279**  
enhancement required

**200**  
new places required



## Specialist supports

**10,818**  
currently accessed

**959**  
enhancement required

**971**  
new places required

### Most commonly accessed



**2,159**  
case  
manager



**1,854**  
physiotherapy



**1,430**  
occupational  
therapy