

HRB Bulletin
National Psychiatric
In-patient Reporting System

CHO 8 Bulletin
2021

Introduction

This bulletin is a synopsis of data for CHO 8 from the NPIRS for 2021 and that reported in the *National Psychiatric In-patient Reporting System (NPIRS) Annual Report on the Activities of Irish Psychiatric Units and Hospitals 2021* (Daly and Craig 2022). The address from which a person was admitted was used to assign him/her to a CHO area and, thus, CHO area refers to the CHO area of residence of admissions. CHO 8 covers the counties of Laois, Offaly, Longford, Westmeath, Louth and Meath.

The rates reported below were calculated using the Census of Population 2016 (Central Statistics Office 2017) and all rates are per 100,000 total population. It was not possible to calculate rates for socio-economic groups for each of the CHO areas and, thus, proportions are presented for socio-economic group.

All and first admissions

There were 1,746 admissions for CHO 8 in 2021, a rate of 283.3 per 100,000, the lowest amongst all areas (Table 1). Admissions for CHO 8 accounted for 11% of all admissions to psychiatric units and hospitals in 2021. There were 719 first admissions, a rate of 116.7 per 100,000 and there were 1,027 re-admissions, representing a rate of 166.7 per 100,000.

Gender and age

Males accounted for 48% of all and 52% of first admissions. Females had a higher rate of all admissions than males, at 291.1 per 100,000 compared with 275.5 for males (Table 1). In contrast, males had a higher rate of first admissions than females, at 122.3, compared with 111.1 per 100,000 for females.

The 20–24 year age group had the highest rate of all admissions for CHO 8, at 587.7 per 100,000, followed by the 18–19 year age group, at 476.3, and the 25–34 year age group, at 443.8. The 45–54 year age group had the lowest rate of all admissions, at 311.1 per 100,000.

The 18–19 year and over age group had the highest rate of first admissions in CHO 8, at 288.5 per 100,000, followed by the 20–24 year age group, at 270.0, and the 65–74 year age group, at 179.3. The 55–64 year age group had the lowest rate of first admissions, at 123.7.

Age groups were condensed into two groups: under 45 years and 45 years and over. The 45 year and over age group had the highest rate of admissions in all CHO areas, with rates ranging from 498.7 per 100,000 in CHO 9 to 364.1 in CHO 8 (Figure 1). In CHO 8 the rate of admission for the 45 year and over age group was 364.1 per 100,000, higher than that for the under 45 year age group, at 238.3.

Table 1: CHOs. All and first admissions. Gender. Ireland 2021. Rates per 100,000 total population

	All			First		
	Male	Female	Total	Male	Female	Total
CHO 1	380.4	389.0	384.7	101.2	96.1	98.6
CHO 2	342.1	318.4	330.2	124.0	113.1	118.5
CHO 3	314.1	287.6	300.8	119.0	99.3	109.1
CHO 4	340.6	322.8	331.6	118.8	112.4	115.6
CHO 5	366.4	362.9	364.7	155.4	129.3	142.3
CHO 6	314.9	347.1	331.5	109.7	103.3	106.4
CHO 7	280.1	302.7	291.5	122.8	108.9	115.7
CHO 8	275.5	291.1	283.3	122.3	111.1	116.7
CHO 9	362.8	370.9	366.9	158.8	140.6	149.5
Total	329.0	331.3	330.2	127.6	114.4	120.9

Marital status

Single persons accounted for 60% of all and 59% of first admissions for CHO 8; married persons accounted for 24% of all and 28% of first admissions; widowed persons accounted for 5% of all and 3% of first admissions; and divorced persons accounted for 2% of all and almost 3% of first admissions.

Socio-economic group

Eleven per cent of all admissions had non-manual occupations, 8% were lower professionals and 6% were manual skilled. However, it is worth noting that almost 60% of returns for CHO 8 did not specify an occupation, making assignment to a socio-economic group impossible. Proportions for first admissions were somewhat similar.

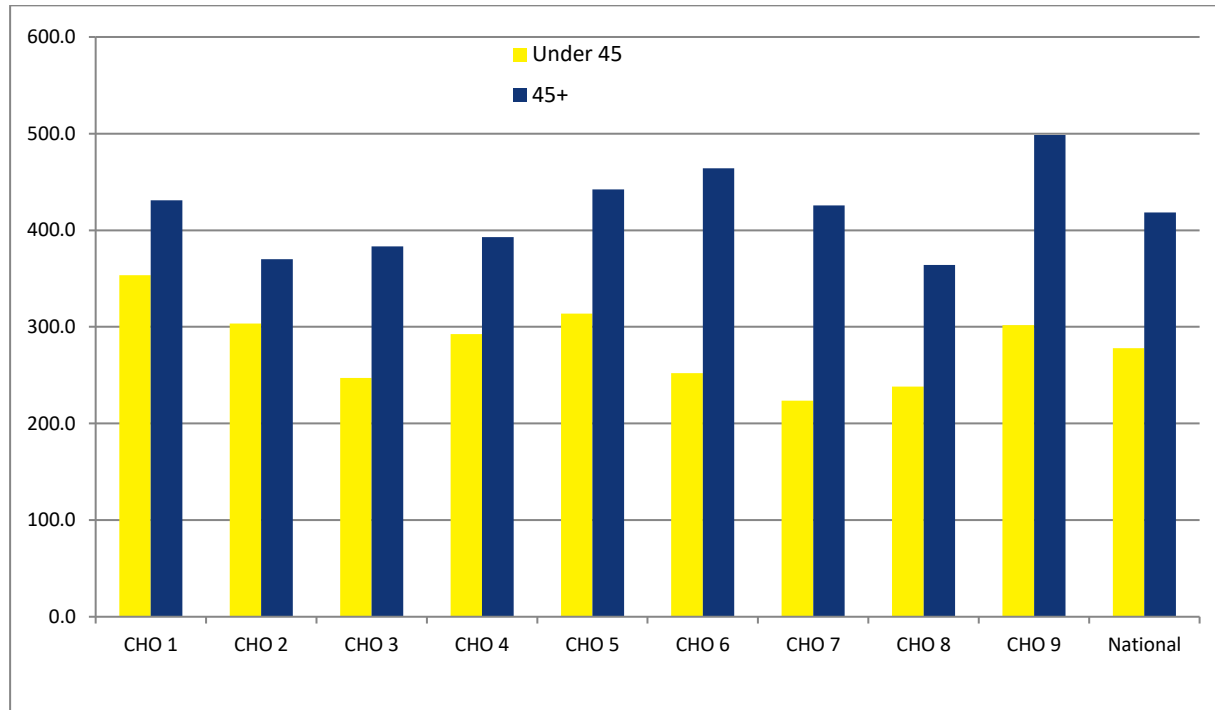
Diagnosis

Depressive disorders accounted for almost 23% of all admissions and 25% of first admissions for CHO 8; schizophrenia accounted for 20% of all and 16% of first admissions; and neuroses accounted for 14% of all and 19% of first admissions.

All and first admission rates in CHO 8 were highest for depressive disorders, at 63.8 (Figure 2) and 28.7 per 100,000, respectively. Schizophrenia had the second-highest rate of all admissions in CHO 8,

at 55.7, followed by neuroses, at 39.3. Neuroses had the second-highest rate of first admissions in CHO 8, at 21.9 per 100,000, followed by schizophrenia, at 19.0.

Figure 1: All admissions by age category by CHO area. Ireland 2021. Rates per 100,000 total population



Legal status

Involuntary admissions accounted for 14% of all and 13% of first admissions for CHO 8. The rate of all involuntary admissions in CHO 8 was 40.7, while that for first admissions was 15.4 per 100,000 (Figure 3).

Hospital type

Fifty-eight per cent of all admissions for CHO 8 were to general hospital psychiatric units, 16% were to psychiatric hospitals/continuing care units and 26% were to independent/private and private charitable centres.

Discharges

There were 1,751 discharges (1,745 discharges and 6 deaths) for CHO 8 in 2021. Thirty-six per cent of discharges occurred within one week of admission, 18% occurred within one to two weeks and a further 18% occurred within two to four weeks of admission. Ninety-four per cent of discharges occurred within three months of admission. This is similar to the pattern observed nationally.

Discharges for CHO 8 accounted for 11% of all discharges and 8% of all in-patient days. The average length of stay for all discharges for CHO 8 was 41.7 days (median 12 days) (Figure 4). This compares with the national average of 55.6 days (median 14 days).

When discharges with a length of stay of one year or more were excluded, discharges for CHO 8 accounted for 11% of discharges and 11% of in-patient days. The average length of stay for discharges, excluding those with a length of stay of one year or more, was 23.6 days (median 12 days).

References

Central Statistics Office (2017) Census of Population 2016, www.cso.ie.

Daly A and Craig S (2022) HRB StatLink Series 10 National Psychiatric In-Patient Reporting System (NPIRS) Annual Report on the *Activities of Irish Psychiatric Units and Hospitals 2021*. Dublin: Health Research Board.

Figure 2: Admissions for selected diagnostic groups by CHO area. Ireland 2021. Rates per 100,000 total population

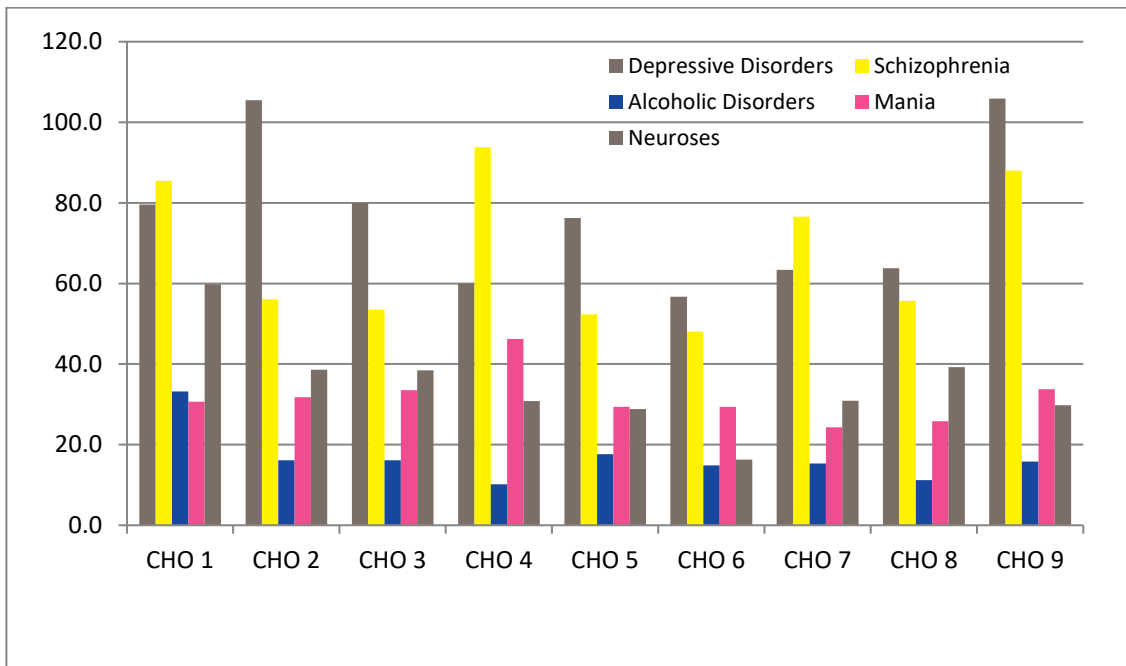


Figure 3: All and first involuntary admissions by CHO area. Ireland 2021. Rates per 100,000 total population

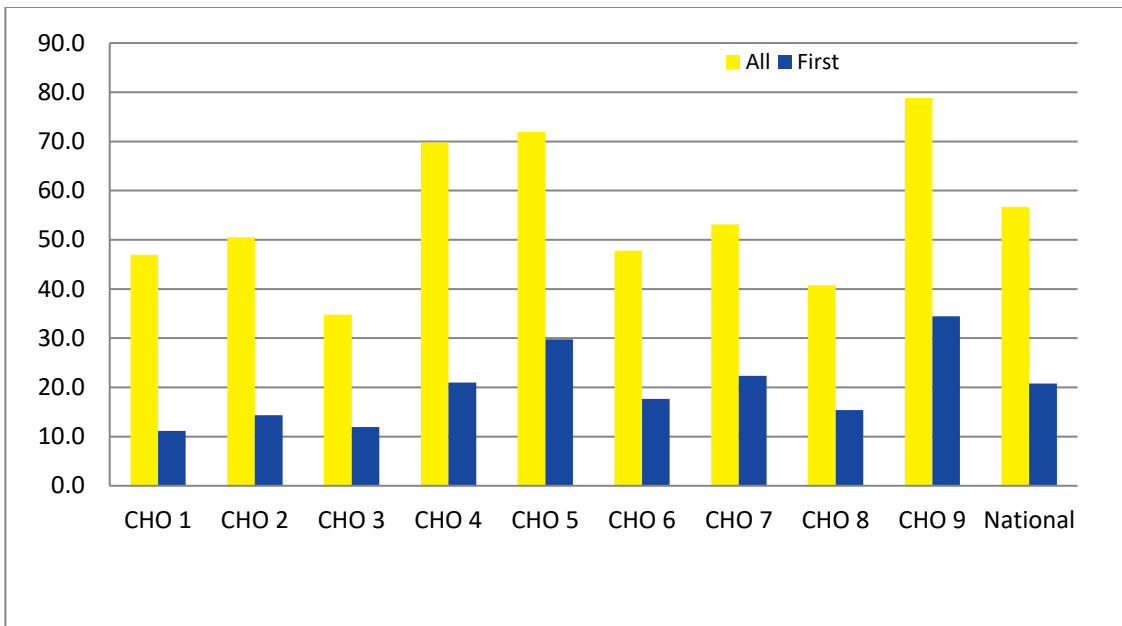


Figure 4: Average length of stay (days) for all discharges and discharges up to 1 year by CHO area. Ireland 2021

