

HRB Bulletin
National Psychiatric
In-patient Reporting System

CHO 7 Bulletin
2021

Introduction

This bulletin is a synopsis of data for CHO 7 from the NPIRS for 2021 and that reported in the *National Psychiatric In-patient Reporting System (NPIRS) Annual Report on the Activities of Irish Psychiatric Units and Hospitals 2021* (Daly and Craig 2022). The address from which a person was admitted was used to assign him/her to a CHO area and, thus, CHO area refers to the CHO area of residence of admissions. CHO 7 covers the areas of Dublin South City, Dublin South West and West, West Wicklow and all of county Kildare.

The rates reported below were calculated using the Census of Population 2016 (Central Statistics Office 2017) and all rates are per 100,000 total population. It was not possible to calculate rates for socio-economic groups for each of the CHO areas and, thus, proportions are presented for socio-economic group.

All and first admissions

There were 1,942 admissions for CHO 7 in 2021, a rate of 291.5 per 100,000, the second-lowest rate amongst all areas (Table 1). Admissions for CHO 7 accounted for 12% of all admissions to psychiatric units and hospitals in 2021. There were 771 first admissions, a rate of 115.7 per 100,000 and there were 1,171 re-admissions, representing a rate of 175.8 per 100,000.

Gender and age

Males accounted for 47% of all and 52% of first admissions. Females had a higher rate of all admissions than males, at 302.7 per 100,000, compared with 280.1 for males (Table1). Males had a higher rate of first admissions than females, at 122.8 per 100,000 compared with 108.9 for females.

The 65–74 year age group had the highest rate of all admissions for CHO 7, at 620.2 per 100,000, followed by the 18–19 year age group, at 507.3, and the 20–24 year age group, at 429.9. The 25–34 year age group had the lowest rate of all admissions, at 323.4 per 100,000.

The 18-19 year age group had the highest rate of first admissions in CHO 7, at 268.2 per 100,000, followed by the 20–24 year age group, at 223.6, and the 65–74 year age group, at 176.6. The 55–64 year age group had the lowest rate of first admissions, at 106.9.

Age groups were condensed into two groups: under 45 years and 45 years and over. The 45 year and over age group had the highest rate of admissions in all CHO areas, with rates ranging from 498.7 per 100,000 in CHO 9 to 364.1 in CHO 8 (Figure 1). In CHO 7 the rate of admission for the 45 year and over age group was 425.5 per 100,000, almost twice that for the under 45 year age group, at 223.8.

Table 1: CHOs. All and first admissions. Gender. Ireland 2021. Rates per 100,000 total population

	All			First		
	Male	Female	Total	Male	Female	Total
CHO 1	380.4	389.0	384.7	101.2	96.1	98.6
CHO 2	342.1	318.4	330.2	124.0	113.1	118.5
CHO 3	314.1	287.6	300.8	119.0	99.3	109.1
CHO 4	340.6	322.8	331.6	118.8	112.4	115.6
CHO 5	366.4	362.9	364.7	155.4	129.3	142.3
CHO 6	314.9	347.1	331.5	109.7	103.3	106.4
CHO 7	280.1	302.7	291.5	122.8	108.9	115.7
CHO 8	275.5	291.1	283.3	122.3	111.1	116.7
CHO 9	362.8	370.9	366.9	158.8	140.6	149.5
Total	329.0	331.3	330.2	127.6	114.4	120.9

Marital status

Single persons accounted for 59% of all and almost 57% of first admissions for CHO 7; married persons accounted for almost 27% of all and 28% of first admissions; widowed persons accounted for almost 4% of all and almost 3% of first admissions; and divorced persons accounted for 3% of all and 3% of first admissions.

Socio-economic group

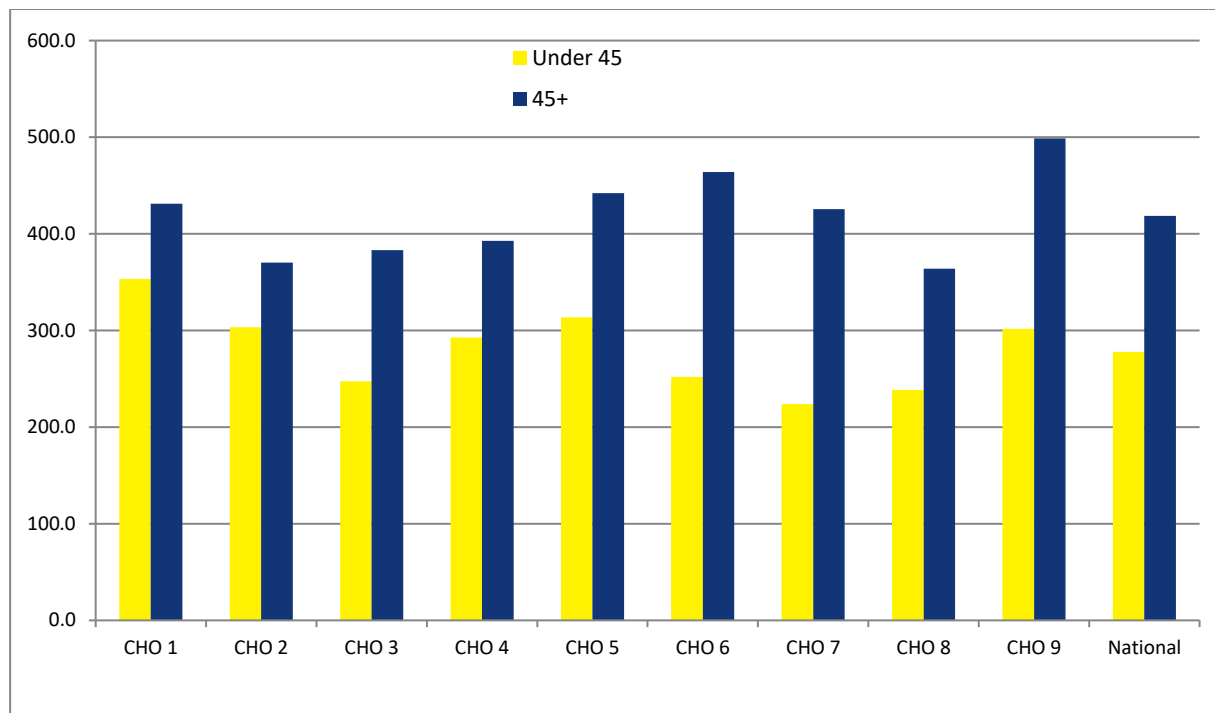
Thirteen per cent of all admissions had non-manual occupations, 9% were lower professionals and almost 5% were employers and managers. However, it is worth noting that almost 59% of returns for CHO 7 did not specify an occupation, making assignment to a socio-economic group impossible.

Diagnosis

Depressive disorders accounted for 22% of all and 23% of first admissions for CHO 7; schizophrenia accounted for 26% of all and 21% of first admissions; and neuroses accounted for 11% of all and 13% of first admissions.

All admission rates in CHO 7 were highest for schizophrenia, at 76.6 per 100,000 (Figure 2), followed by depressive disorders, at 63.4 and neuroses, at 30.9. Depressive disorders had the highest rate of first admissions in CHO 7, at 26.4, followed by schizophrenia, at 24.2 and neuroses, at 15.6.

Figure 1: All admissions by age category by CHO area. Ireland 2021. Rates per 100,000 total population



Legal status

Involuntary admissions accounted for 18% of all and 19% of first admissions for CHO 7. The rate of all involuntary admissions in CHO 7 was 53.1, while that for first admissions was 22.4 per 100,000, the third-highest amongst all CHO areas (Figure 3).

Hospital type

Fifty-nine per cent of all admissions for CHO 7 were to general hospital psychiatric units, 1% were to psychiatric hospitals/continuing care units and 40% were to independent/private and private charitable centres.

Discharges

There were 1,939 discharges (1,921 discharges and 18 deaths) for CHO 7 in 2021. Twenty-five per cent of discharges occurred within one week of admission, 17% occurred within one to two weeks and 20% occurred within two to four weeks of admission. Ninety-five per cent of discharges occurred within three months of admission. This is similar to the pattern observed nationally.

Discharges for CHO 7 accounted for 12% of all discharges and 15% of all in-patient days. The average length of stay for all discharges for CHO 7 was 67.9 days (median 18 days), the second-longest average length of stay amongst all areas. (Figure 4). This compares with the national average of 55.6 days (median 14 days).

When discharges with a length of stay of one year or more were excluded, discharges for CHO 7 again accounted for 12% of discharges and almost 14% of in-patient days. The average length of stay for discharges, excluding those with a length of stay of one year or more, was 28.1 days (median 18 days).

References

Central Statistics Office (2017) Census of Population 2016, www.cso.ie.

Daly A and Craig S (2022) HRB StatLink Series 10 National Psychiatric In-Patient Reporting System (NPIRS) Annual Report on the *Activities of Irish Psychiatric Units and Hospitals 2021*. Dublin: Health Research Board.

Figure 2: Admissions for selected diagnostic groups by CHO area. Ireland 2021. Rates per 100,000 total population

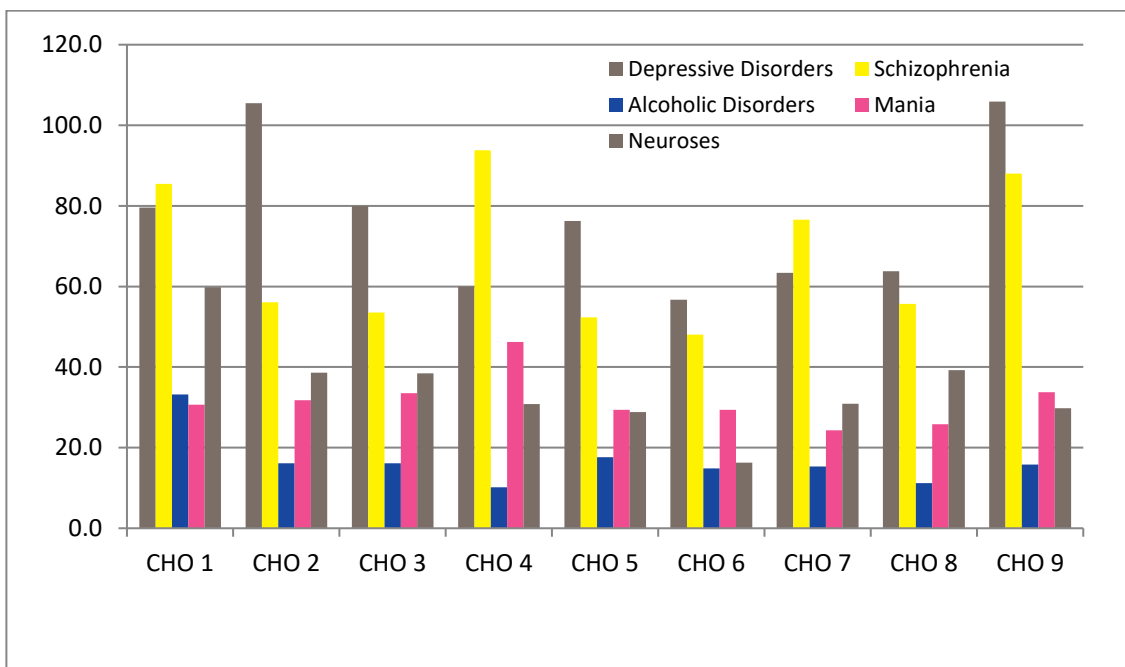


Figure 3: All and first involuntary admissions by CHO area. Ireland 2021. Rates per 100,000 total population

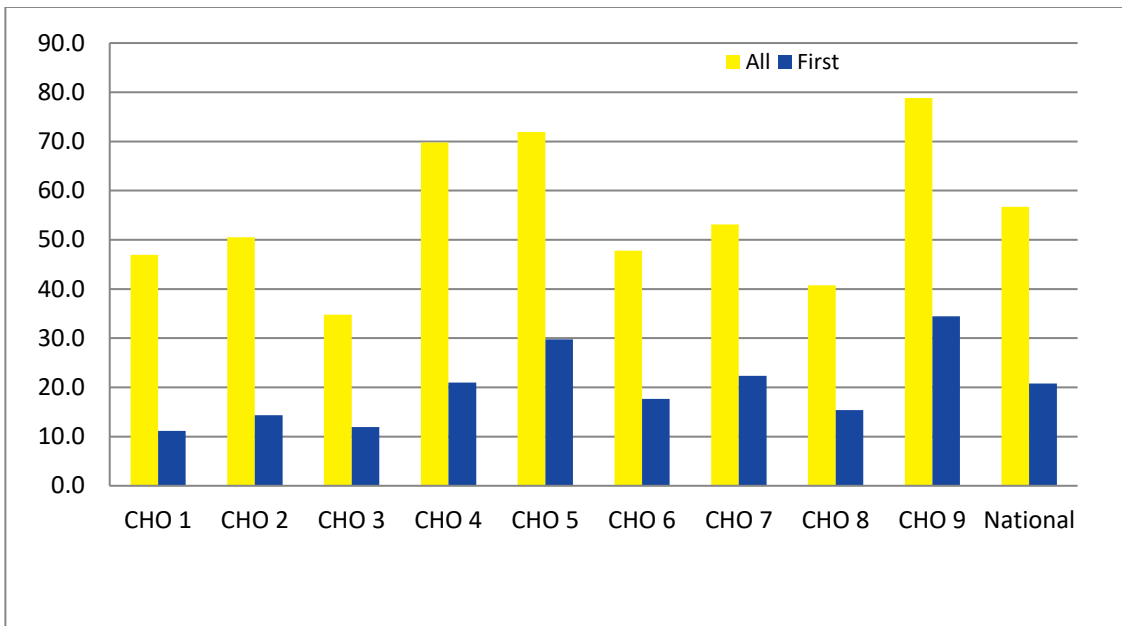


Figure 4: Average length of stay (days) for all discharges and discharges up to 1 year by CHO area. Ireland 2021

