

HRB Bulletin
National Psychiatric
In-patient Reporting System

CHO 6 Bulletin
2021

Introduction

This bulletin is a synopsis of data for CHO 6 from the NPIRS for 2021 and that reported in the *National Psychiatric In-patient Reporting System (NPIRS) Annual Report on the Activities of Irish Psychiatric Units and Hospitals 2021* (Daly and Craig 2022). The address from which a person was admitted was used to assign him/her to a CHO area and, thus, CHO area refers to the CHO area of residence of admissions. CHO 6 covers the areas of Dun Laoghaire, Dublin South East and East Wicklow.

The rates reported below were calculated using the Census of Population 2016 (Central Statistics Office 2017) and all rates are per 100,000 total population. It was not possible to calculate rates for socio-economic groups for each of the CHO areas and, thus, proportions are presented for socio-economic group.

All and first admissions

There were 1,408 admissions for CHO 6 in 2021, a rate of 331.5 per 100,000 (Table 1). Admissions for CHO 6 accounted for 9% of all admissions in 2021. There were 452 first admissions, a rate of 106.4 per 100,000, the second-lowest rate for first admissions and there were 956 re-admissions, representing a rate of 225.1 per 100,000.

Gender and age

Males accounted for 46% of all admissions and there was an equal proportion of male and female first admissions. Females had a higher rate of all admissions than males, at 347.1 per 100,000, compared with 314.9 for males (Table 1). Males had a slightly higher rate of first admissions than females, at 109.7, compared with 103.3 for females.

The 65–74 year age group had the highest rate of all admissions for CHO 6, at 532.9 per 100,000, followed by the 75 year and over age group, at 492.5 and the 20–24 year age group, at 490.7. The 25–34 year age group had the lowest rate of all admissions, at 329.5 per 100,000.

The 18–19 year age group had the highest rate of first admissions in CHO 6, at 256.9 per 100,000, followed by the 20–24 year age group, at 189.5 and the 55–64 year age group, at 159.2. The 45–54 year age group had the lowest rate of first admissions, at 96.7.

Age groups were condensed into two groups: under 45 years and 45 years and over. The 45 year and over age group had the highest rate of admissions in all CHO areas, with rates ranging from 498.7 per 100,000 in CHO 9 to 364.1 in CHO 8 (Figure 1). In CHO 6 the rate of admission for the 45 year and over age group, at 464.1 per 100,000 was higher than that for the under 45 year age group, at 251.9.

Table 1: CHOs. All and first admissions. Gender. Ireland 2021. Rates per 100,000 total population

	All			First		
	Male	Female	Total	Male	Female	Total
CHO 1	380.4	389.0	384.7	101.2	96.1	98.6
CHO 2	342.1	318.4	330.2	124.0	113.1	118.5
CHO 3	314.1	287.6	300.8	119.0	99.3	109.1
CHO 4	340.6	322.8	331.6	118.8	112.4	115.6
CHO 5	366.4	362.9	364.7	155.4	129.3	142.3
CHO 6	314.9	347.1	331.5	109.7	103.3	106.4
CHO 7	280.1	302.7	291.5	122.8	108.9	115.7
CHO 8	275.5	291.1	283.3	122.3	111.1	116.7
CHO 9	362.8	370.9	366.9	158.8	140.6	149.5
Total	329.0	331.3	330.2	127.6	114.4	120.9

Marital status

Single persons accounted for 45% of all and 42% of first admissions for CHO 6; married persons accounted for 29% of all and 28% of first admissions; widowed persons accounted for 5% of all and 5% of first admissions; and divorced persons accounted for 2% of all and 3% of first admissions.

Socio-economic group

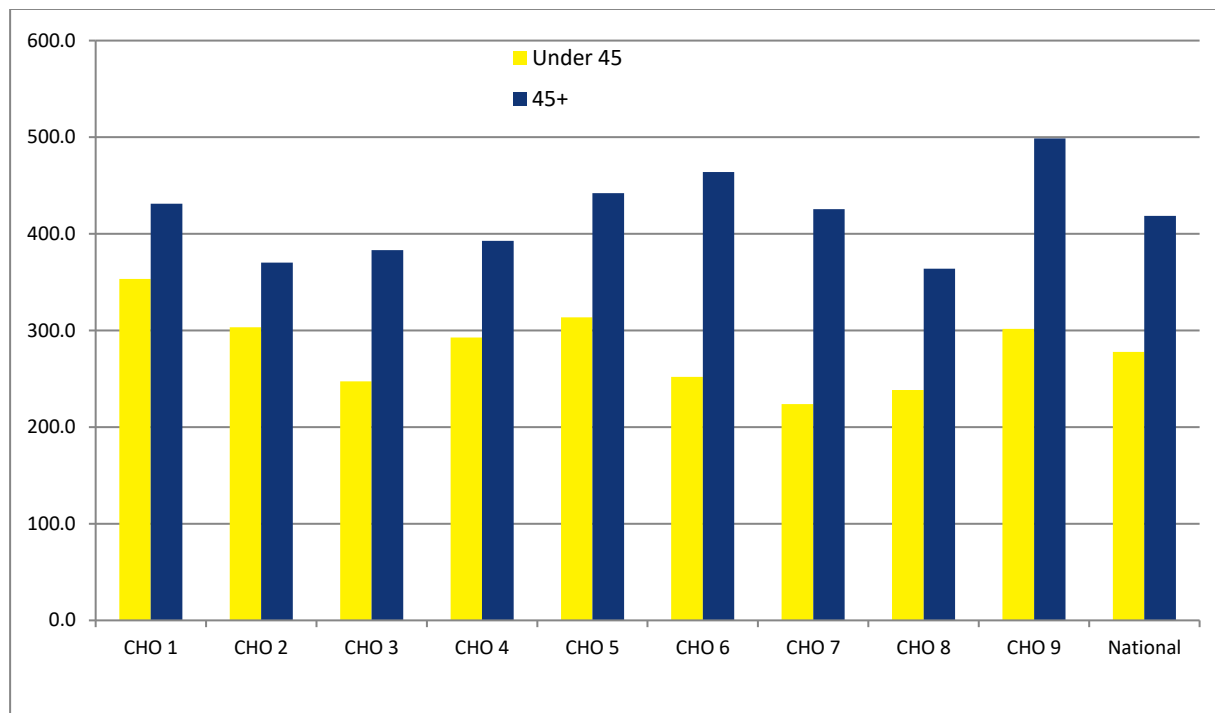
Almost 7% of all admissions had non-manual occupations, 6% were lower professional and 4% each were higher professionals and employers and managers. However, it is worth noting that 74% of returns for CHO 6 did not specify an occupation, making assignment to a socio-economic group impossible.

Diagnosis

Depressive disorders accounted for 17% of all admissions and almost 17% of first admissions for CHO 6; schizophrenia accounted for almost 15% of all and 12% of first admissions; and mania accounted for 9% of all and 6% of first admissions.

All admission rates in CHO 6 were highest for depressive disorders, at 56.7 per 100,000, followed by schizophrenia, at 48.0, and mania, at 29.4 (Figure 2). First admission rates were also highest for depressive disorders, at 17.7 per 100,000, followed by schizophrenia, at 12.9 and neuroses, at 7.5.

Figure 1: All admissions by age category by CHO area. Ireland 2021. Rates per 100,000 total population



Legal status

Involuntary admissions accounted for 14% of all and almost 17% of first admissions for CHO 6. The rate of all involuntary admissions in CHO 6 was 47.8, while that for first admissions was 17.7 per 100,000 (Figure 3).

Hospital type

Forty-eight per cent of all admissions for CHO 6 were to independent/private and private charitable centres, 16% were to general hospital psychiatric units and 36% were to psychiatric hospitals/continuing care units.

Discharges

There were 1,398 discharges (1,386 discharges and 12 deaths) for CHO 6 in 2021. Twenty per cent of discharges occurred within one week of admission, almost 18% occurred within one to two weeks and 21% occurred within two to four weeks of admission. Ninety-three per cent of discharges occurred within three months of admission. This is similar to the pattern observed nationally.

Discharges for CHO 6 accounted for 9% of all discharges and almost 12% of all in-patient days. The average length of stay for all discharges for CHO 6 was 71.6 days (median 20 days), the longest average length of stay amongst all areas (Figure 4). This compares with the national average of 55.6 days (median 14 days).

When discharges with a length of stay of one year or more were excluded, discharges for CHO 6 accounted for 9% of discharges and 11% of in-patient days. The average length of stay for discharges, excluding those with a length of stay of one year or more, was 29.7 days (median 20 days), the longest average length of stay amongst all areas.

References

Central Statistics Office (2017) Census of Population 2016, www.cso.ie.

Daly A and Craig S (2022) HRB StatLink Series 10 National Psychiatric In-Patient Reporting System (NPIRS) Annual Report on the *Activities of Irish Psychiatric Units and Hospitals 2021*. Dublin: Health Research Board.

Figure 2: Admissions for selected diagnostic groups by CHO area. Ireland 2021. Rates per 100,000 total population

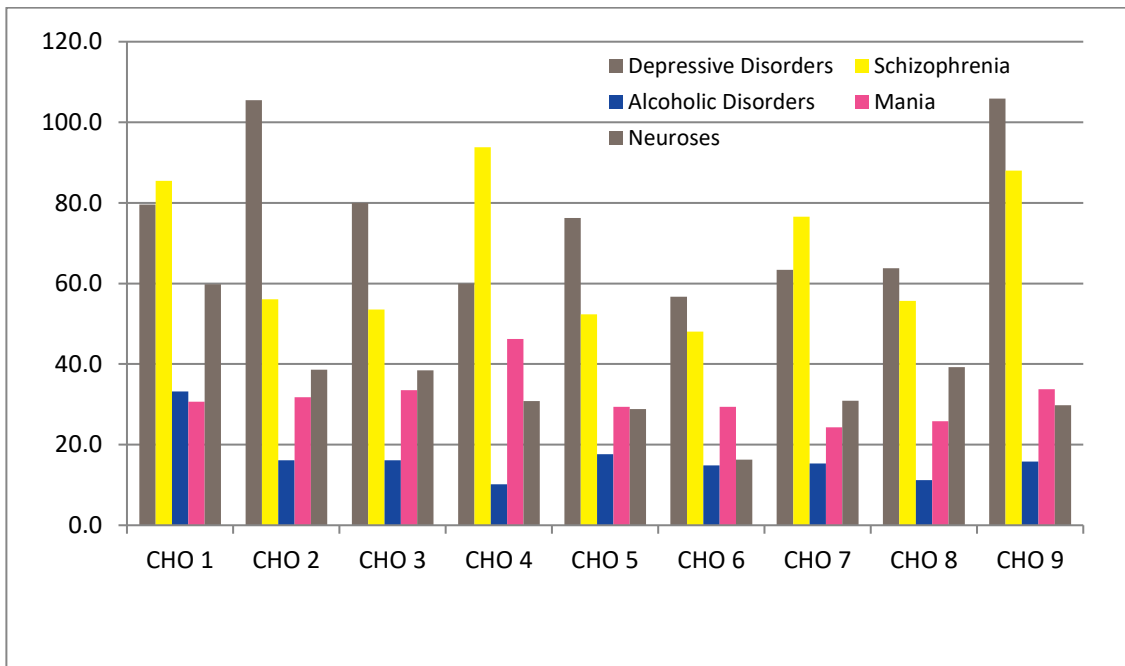


Figure 3: All and first involuntary admissions by CHO area. Ireland 2021. Rates per 100,000 total population

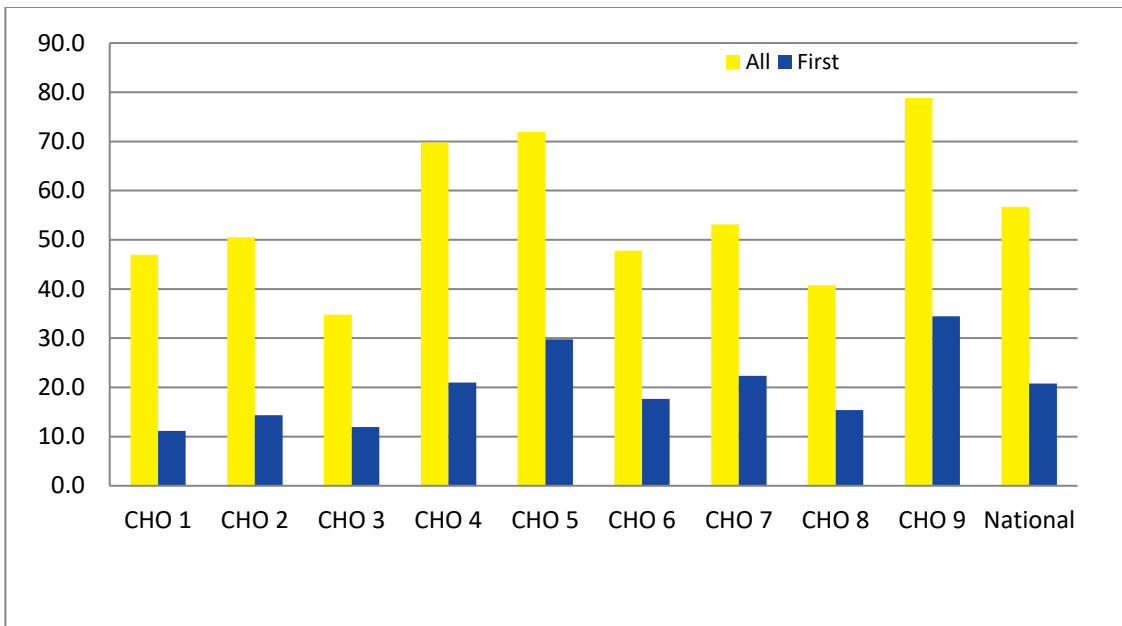


Figure 4: Average length of stay (days) for all discharges and discharges up to 1 year by CHO area. Ireland 2021

