

**HRB Bulletin**  
National Psychiatric  
In-patient Reporting System

**CHO 5 Bulletin**  
**2021**

## Introduction

This bulletin is a synopsis of data for CHO 5 from the NPIRS for 2021 and that reported in the *National Psychiatric In-patient Reporting System (NPIRS) Annual Report on the Activities of Irish Psychiatric Units and Hospitals 2021* (Daly and Craig 2022). The address from which a person was admitted was used to assign him/her to a CHO area and, thus, CHO area refers to the CHO area of residence of admissions. CHO 5 covers the counties of Carlow, Kilkenny, South Tipperary, Waterford and Wexford.

The rates reported below were calculated using the Census of Population 2016 (Central Statistics Office 2017) and all rates are per 100,000 total population. It was not possible to calculate rates for socio-economic groups for each of the CHO areas and, thus, proportions are presented for socio-economic group.

## All and first admissions

There were 1,861 admissions for CHO 5 in 2021, a rate of 364.7 per 100,000 (Table 1). Admissions for CHO 5 accounted for 12% of all admissions to psychiatric units and hospitals in 2021. There were 726 first admissions, a rate of 142.3 per 100,000 and 1,135 re-admissions, representing a rate of 222.4 per 100,000.

## Gender and age

There was an equal proportion of male and female admissions in CHO 5, with males having a slightly higher rate of all admissions than females, at 366.4 per 100,000, compared with 362.9 for females (Table 1). Males also had a higher rate of first admissions than females, at 155.4 compared with 129.3 for females.

The 18–19 year age group had the highest rate of all admissions for CHO 5, at 737.0 per 100,000, followed by the 20–24 year age group, at 731.1, and the 25–34 year age group, at 583.8. The 65–74 year age group had the lowest rate of all admissions, at 395.8 per 100,000.

The 18–19 year age group had the highest rate of first admissions in CHO 5, at 372.6 per 100,000, followed by the 20–24 year age group, at 328.4, and the 75 year and over age group, at 264.8. The 55–64 year age group had the lowest rate of first admissions, at 129.0.

Age groups were condensed into two groups: under 45 years and 45 years and over. The 45 year and over age group had the highest rate of admissions in all CHO areas, with rates ranging from 498.7 per 100,000 in CHO 9 to 364.1 in CHO 8 (Figure 1). In CHO 5 the rate of admission for the 45 year and over age group was 442.3 per 100,000, higher than that for the under 45 year age group, at 313.7.

**Table 1: CHOs. All and first admissions. Gender. Ireland 2021. Rates per 100,000 total population**

	All			First		
	Male	Female	Total	Male	Female	Total
CHO 1	380.4	389.0	384.7	101.2	96.1	98.6
CHO 2	342.1	318.4	330.2	124.0	113.1	118.5
CHO 3	314.1	287.6	300.8	119.0	99.3	109.1
CHO 4	340.6	322.8	331.6	118.8	112.4	115.6
CHO 5	366.4	362.9	364.7	155.4	129.3	142.3
CHO 6	314.9	347.1	331.5	109.7	103.3	106.4
CHO 7	280.1	302.7	291.5	122.8	108.9	115.7
CHO 8	275.5	291.1	283.3	122.3	111.1	116.7
CHO 9	362.8	370.9	366.9	158.8	140.6	149.5
<b>Total</b>	<b>329.0</b>	<b>331.3</b>	<b>330.2</b>	<b>127.6</b>	<b>114.4</b>	<b>120.9</b>

### Marital status

Single persons accounted for 61% of all and almost 57% of first admissions for CHO 5; married persons accounted for 23% of all and 26% of first admissions; widowed persons accounted for almost 5% of all and 5% of first admissions; and divorced persons accounted for 2% of all and almost 2% of first admissions.

### Socio-economic group

Six per cent of all admissions had non-manual occupations, almost 4% were lower professionals, 3% were manual skilled and a further 3% were unskilled. However, it is worth noting that almost three-quarters (77%) of returns for CHO 5 did not specify an occupation, making assignment to a socio-economic group impossible. Proportions for first admissions were somewhat similar.

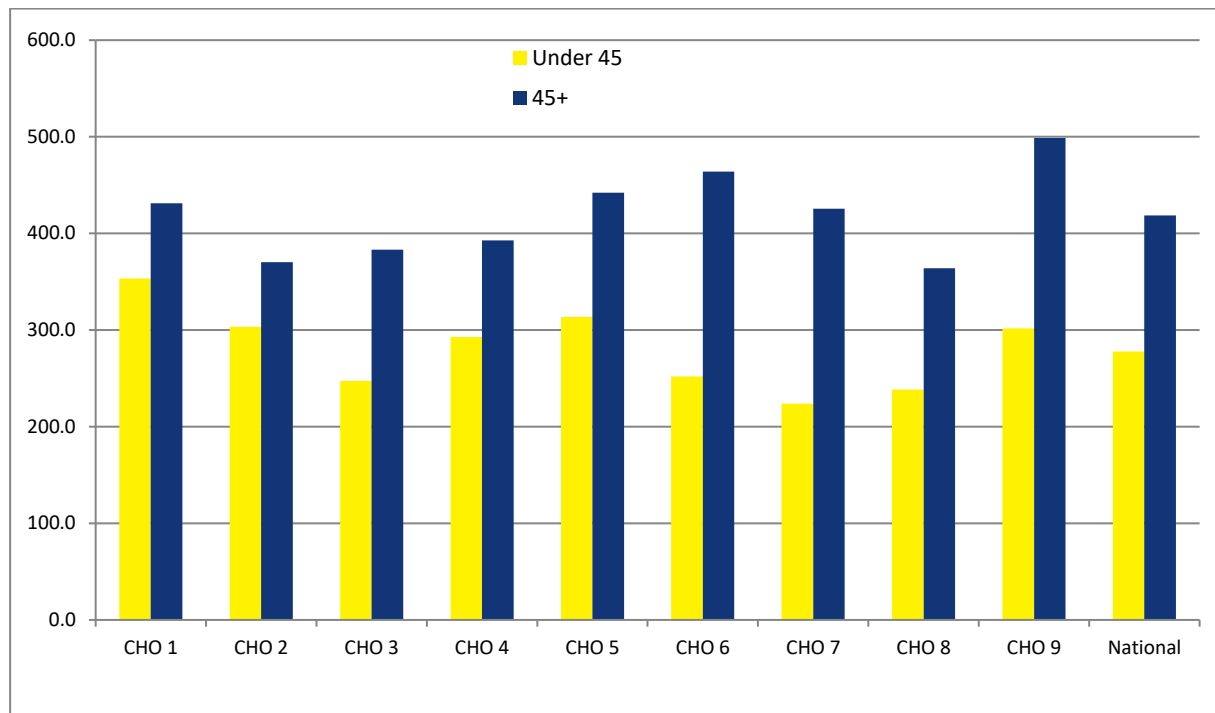
### Diagnosis

Depressive disorders accounted for 21% of all admissions and 22% of first admissions for CHO 5; schizophrenia accounted for 14% of all and 7% of first admissions; and mania accounted for 8% of all and 4% of first admissions.

All and first admission rates in CHO 5 were highest for depressive disorders, at 76.2 (Figure 2) and 31.7 per 100,000, respectively. Schizophrenia had the second-highest rate of all admissions in CHO

5, at 52.3, followed by personality and behavioural disorders, at 32.5 and mania, at 29.4. Neuroses had the second-highest rate of first admissions in CHO 5, at 12.9 per 100,000, followed by schizophrenia, at 10.4.

**Figure 1: All admissions by age category by CHO area. Ireland 2021. Rates per 100,000 total population**



### Legal status

Involuntary admissions accounted for 20% of all and 21% of first admissions for CHO 5. The rate of all involuntary admissions in CHO 5 was 71.9, the second-highest amongst all CHO areas, while that for first admissions was 29.8, also the second-highest amongst all CHO areas (Figure 3).

### Hospital type

Almost 80% of all admissions for CHO 5 were to general hospital psychiatric units, almost 6% were to psychiatric hospitals/continuing care units and 15% were to independent/private and private charitable centres.

### Discharges

There were 1,884 discharges (1,862 discharges and 22 deaths) for CHO 5 in 2021. Thirty-nine per cent of discharges occurred within one week of admission, 19% occurred within one to two weeks and a further 19% occurred within two to four weeks of admission. Ninety-five per cent of discharges occurred within three months of admission. This is similar to the pattern observed nationally.

Discharges for CHO 5 accounted for 12% of all discharges and 11% of all in-patient days. The average length of stay for all discharges for CHO 5 was 51.2 days (median 10 days) (Figure 4). This compares with the national average of 55.6 days (median 14 days).

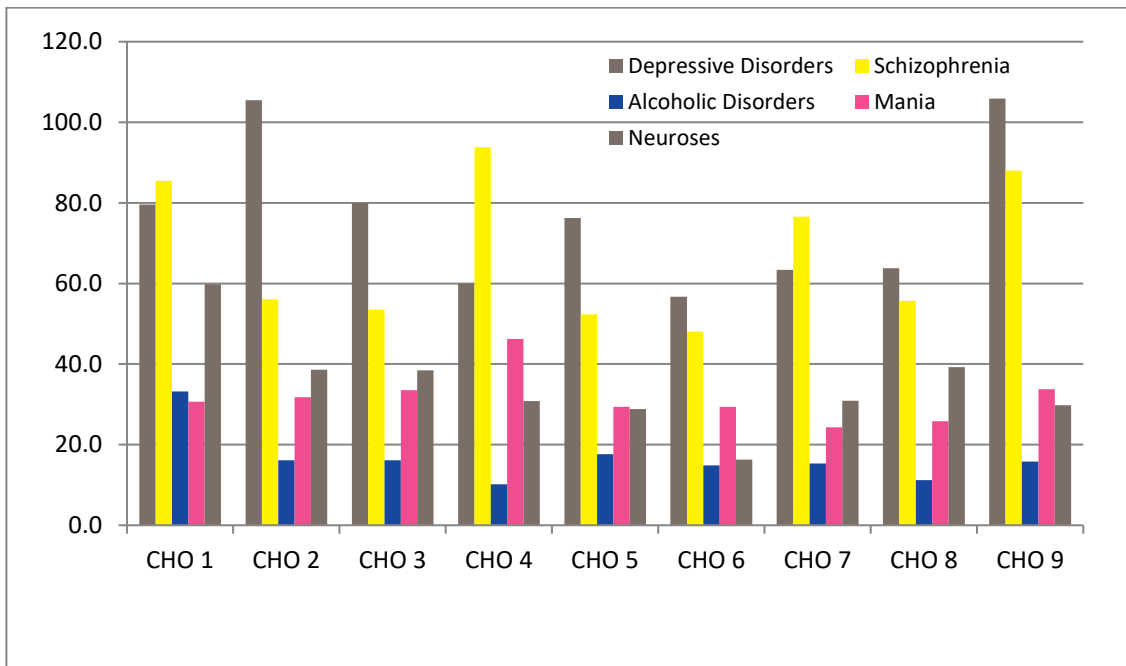
When discharges with a length of stay of one year or more were excluded, discharges for CHO 5 again accounted for 12% of discharges and 10% of in-patient days. The average length of stay for discharges, excluding those with a length of stay of one year or more, was 20.4 days (median 10 days).

## References

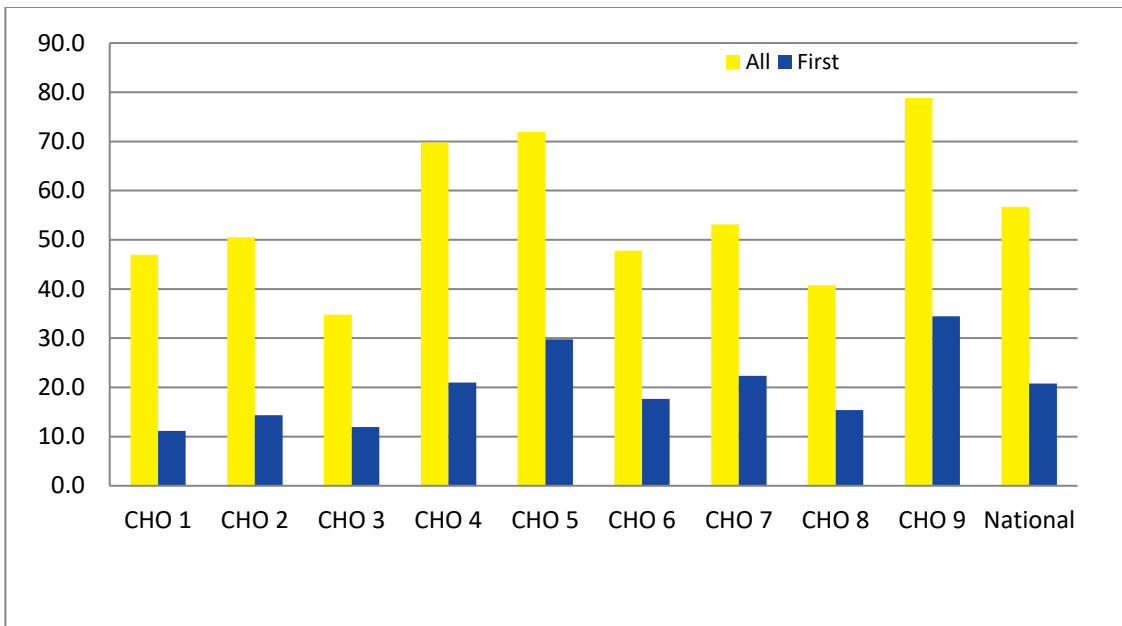
Central Statistics Office (2017) Census of Population 2016, [www.cso.ie](http://www.cso.ie).

Daly A and Craig S (2022) HRB StatLink Series 10 National Psychiatric In-Patient Reporting System (NPIRS) Annual Report on the *Activities of Irish Psychiatric Units and Hospitals 2021*. Dublin: Health Research Board.

**Figure 2: Admissions for selected diagnostic groups by CHO area. Ireland 2021. Rates per 100,000 total population**



**Figure 3: All and first involuntary admissions by CHO area. Ireland 2021. Rates per 100,000 total population**



**Figure 4: Average length of stay (days) for all discharges and discharges up to 1 year by CHO area. Ireland 2021**

