

HRB Bulletin
National Psychiatric
In-patient Reporting System

CHO 4 Bulletin
2021

Introduction

This bulletin is a synopsis of data for CHO 4 from the NPIRS for 2021 and that reported in the *National Psychiatric In-patient Reporting System (NPIRS) Annual Report on the Activities of Irish Psychiatric Units and Hospitals 2021* (Daly and Craig 2022). The address from which a person was admitted was used to assign him/her to a CHO area and, thus, CHO area refers to the CHO area of residence of admissions. CHO 4 covers the counties of Cork and Kerry.

The rates reported below were calculated using the Census of Population 2016 (Central Statistics Office 2017) and all rates are per 100,000 total population. It was not possible to calculate rates for socio-economic groups for each of the CHO areas and, thus, proportions are presented for socio-economic group.

All and first admissions

There were 2,290 admissions for CHO 4 in 2021, a rate of 331.6 per 100,000 (Table 1). Admissions for CHO 4 accounted for almost 15% of all admissions to psychiatric units and hospitals in 2021. There were 798 first admissions, a rate of 115.6 per 100,000 and there were 1,492 re-admissions, representing a rate of 216.1 per 100,000.

Gender and age

Males accounted for 51% of all and 51% of first admissions. Males had a higher rate of all admissions than females, at 340.6 per 100,000, compared with 322.8 for females. Similarly, males had a higher rate of first admissions, at 118.8 per 100,000 compared with 112.4 for females.

The 20–24 year age group had the highest rate of all admissions for CHO 4, at 596.7 per 100,000, followed by the 25–34 year age group, at 504.0, and the 35–44 year age group, at 453.3. The 75 year and over age group had the lowest rate of all admissions, at 317.6 per 100,000.

The 20–24 year age group had the highest rate of first admissions in CHO 4, at 311.1 per 100,000, followed by the 18–19 year age group, at 242.5, and the 25–34 year age group, at 156.1. The 75 year and over age group had the lowest rate of first admissions, at 119.7.

Age groups were condensed into two groups: under 45 years and 45 years and over. The 45 year and over age group had the highest rate of admissions in all CHO areas, with rates ranging from 498.7 per 100,000 in CHO 9 to 364.1 in CHO 8 (Figure 1). In CHO 4 the rate of admission for the 45 year and over age group was 392.8 per 100,000, higher than that for the under 45 year age group, at 292.6.

Table 1: CHOs. All and first admissions. Gender. Ireland 2021. Rates per 100,000 total population

	All			First		
	Male	Female	Total	Male	Female	Total
CHO 1	380.4	389.0	384.7	101.2	96.1	98.6
CHO 2	342.1	318.4	330.2	124.0	113.1	118.5
CHO 3	314.1	287.6	300.8	119.0	99.3	109.1
CHO 4	340.6	322.8	331.6	118.8	112.4	115.6
CHO 5	366.4	362.9	364.7	155.4	129.3	142.3
CHO 6	314.9	347.1	331.5	109.7	103.3	106.4
CHO 7	280.1	302.7	291.5	122.8	108.9	115.7
CHO 8	275.5	291.1	283.3	122.3	111.1	116.7
CHO 9	362.8	370.9	366.9	158.8	140.6	149.5
Total	329.0	331.3	330.2	127.6	114.4	120.9

Marital status

Single persons accounted for 62% of all and 58% of first admissions for CHO 4; married persons accounted for almost 24% of all and 26% of first admissions; widowed persons accounted for 4% of all and 4% of first admissions; and divorced persons accounted for 4% of all and 4% of first admissions.

Socio-economic group

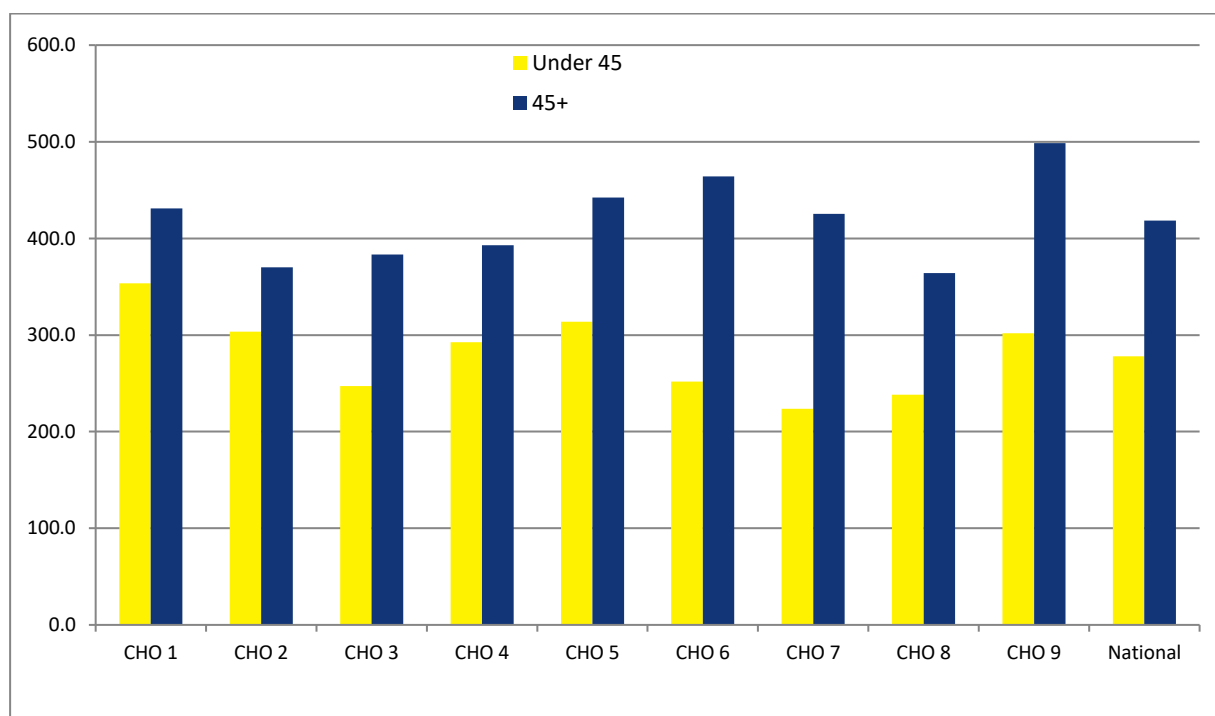
Eleven per cent of all admissions had non-manual occupations, 9% were lower professionals, 6% were manual skilled and a further 6% were semi-skilled. However, it is worth noting that 54% of returns for CHO 4 did not specify an occupation, making assignment to a socio-economic group impossible. Proportions for first admissions were somewhat similar.

Diagnosis

Depressive disorders accounted for 18% of all admissions and 20% of first admissions for CHO 4; schizophrenia accounted for 28% of all and almost 21% of first admissions; mania accounted for 14% of all and 10% of first admissions, while neuroses counted for 9% of all and 14% of first admissions.

Schizophrenia had the highest rate of all admissions in CHO 4, at 93.8, followed by depressive disorders, at 60.0 and mania, at 46.2 (Figure 2). First admission rates in CHO 4 were also highest for schizophrenia, at 24.6 per 100,000, followed by depressive disorders, at 23.3 and neuroses, at 16.7.

Figure 1: All admissions by age category by CHO area. Ireland 2021. Rates per 100,000 total population



Legal status

Involuntary admissions accounted for 21% of all and 18% of first admissions for CHO 4. The rate of all involuntary admissions in CHO 4 was 69.8, the third-highest amongst all areas, while that for first admissions was 21.0 per 100,000, the fourth-highest amongst all CHO areas (Figure 3).

Hospital type

Three-quarters of all admissions for CHO 4 were to general hospital psychiatric units, almost 15% were to psychiatric hospitals/continuing care units and 11% were to independent/private and private charitable centres.

Discharges

There were 2,281 discharges (2,266 discharges and 15 deaths) for CHO 4 in 2021. Thirty-one per cent of discharges occurred within one week of admission, 21% occurred within one to two weeks and

almost 23% occurred within two to four weeks of admission. Ninety-five per cent of discharges occurred within three months of admission. This is similar to the pattern observed nationally.

Discharges for CHO 4 accounted for almost 15% of all discharges and 18% of all in-patient days. The average length of stay for all discharges for CHO 4 was 67.6 days (median 13 days) (Figure 4), the third-longest average length of stay amongst all CHO areas. This compares with the national average of 55.6 days (median 14 days).

When discharges with a length of stay of one year or more were excluded, discharges for CHO 4 again accounted for almost 15% of discharges and 14% of in-patient days. The average length of stay for discharges, excluding those with a length of stay of one year or more, was 23.0 days (median 13 days).

References

Central Statistics Office (2017) Census of Population 2016, www.cso.ie.

Daly A and Craig S (2022) HRB StatLink Series 10 National Psychiatric In-Patient Reporting System (NPIRS) Annual Report on the *Activities of Irish Psychiatric Units and Hospitals 2021*. Dublin: Health Research Board.

Figure 2: Admissions for selected diagnostic groups by CHO area. Ireland 2021. Rates per 100,000 total population

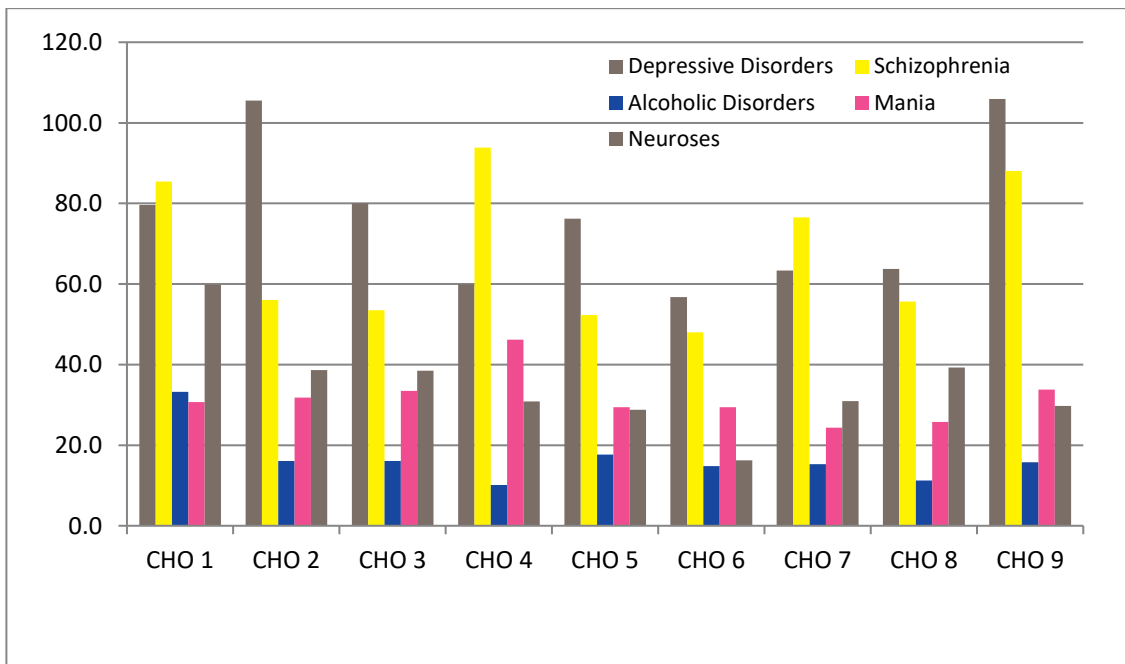


Figure 3: All and first involuntary admissions by CHO area. Ireland 2021. Rates per 100,000 total population

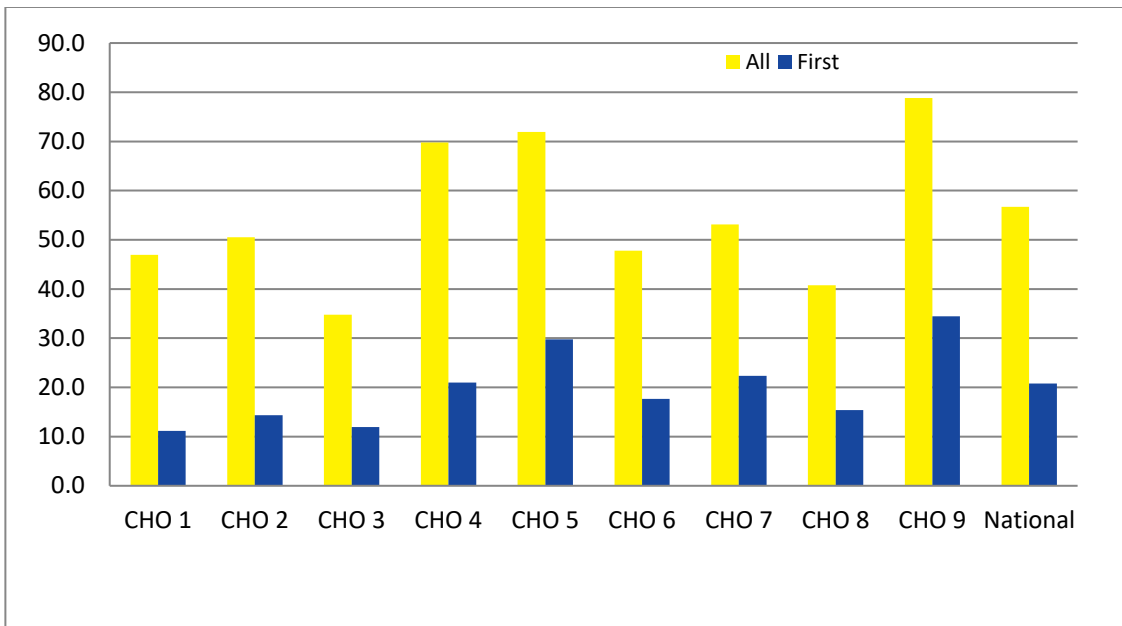


Figure 4: Average length of stay (days) for all discharges and discharges up to 1 year by CHO area. Ireland 2021

