

HRB Bulletin
National Psychiatric
In-patient Reporting System

CHO 2 Bulletin
2021

Introduction

This bulletin is a synopsis of data for CHO 2 from the NPIRS for 2021 and that reported in the *National Psychiatric In-patient Reporting System (NPIRS) Annual Report on the Activities of Irish Psychiatric Units and Hospitals 2021* (Daly and Craig 2022). The address from which a person was admitted was used to assign him/her to a CHO area and, thus, CHO area refers to the CHO area of residence of admissions. CHO 2 covers the counties of Galway, Mayo and Roscommon.

The rates reported below were calculated using the Census of Population 2016 (Central Statistics Office 2017) and all rates are per 100,000 total population. It was not possible to calculate rates for socio-economic groups for each of the CHO areas and, thus, proportions are presented for socio-economic group.

All and first admissions

There were 1,496 admissions for CHO 2 in 2021, a rate of 330.2 per 100,000 (Table 1). Admissions for CHO 2 accounted for almost 10% of all admissions to psychiatric units and hospitals in 2021. There were 537 first admissions, a rate of 118.5 per 100,000 and 959 re-admissions, representing a rate of 211.6 per 100,000.

Gender and age

Fifty-one per cent of all admissions were male and males also had a higher rate of all admissions, at 342.1, and first admissions, at 124.0, than females, at 318.4 for all and 113.1 for first (Table 1).

The 20–24 year age group had the highest rate of all admissions for CHO 2, at 611.7 per 100,000, followed by the 18–19 year age group, at 590.8, and the 25–34 year age group, at 536.0. The 75 year and over age group had the lowest rate of all admissions, at 217.5 per 100,000.

The 18–19 year age group had the highest rate of first admissions for CHO 2, at 331.2 per 100,000, followed by the 20–24 year age group, at 323.9, and the 25–34 year age group, at 170.9. The 75 year and over age group had the lowest rate of all admissions, at 79.4 per 100,000.

Age groups were condensed into two groups: under 45 years and 45 years and over. The 45 year and over age group had the highest rate of admissions in all CHO areas, with rates ranging from 498.7 per 100,000 in CHO 9 to 364.1 in CHO 8 (Figure 1). In CHO 2 the rate of admission for the 45 year and over age group was 370.2 per 100,000, while that for the under 45 year age group was 303.4.

Table 1: CHOs. All and first admissions. Gender. Ireland 2021. Rates per 100,000 total population

	All			First		
	Male	Female	Total	Male	Female	Total
CHO 1	380.4	389.0	384.7	101.2	96.1	98.6
CHO 2	342.1	318.4	330.2	124.0	113.1	118.5
CHO 3	314.1	287.6	300.8	119.0	99.3	109.1
CHO 4	340.6	322.8	331.6	118.8	112.4	115.6
CHO 5	366.4	362.9	364.7	155.4	129.3	142.3
CHO 6	314.9	347.1	331.5	109.7	103.3	106.4
CHO 7	280.1	302.7	291.5	122.8	108.9	115.7
CHO 8	275.5	291.1	283.3	122.3	111.1	116.7
CHO 9	362.8	370.9	366.9	158.8	140.6	149.5
Total	329.0	331.3	330.2	127.6	114.4	120.9

Marital status

Single persons accounted 65% of all and 64% of first admissions for CHO 2; married persons accounted for 24% of all and almost 26% of first admissions; widowed persons accounted for 2% of all and 2% of first admissions; and divorced persons accounted for 6% of all and 5% of first admissions.

Socio-economic group

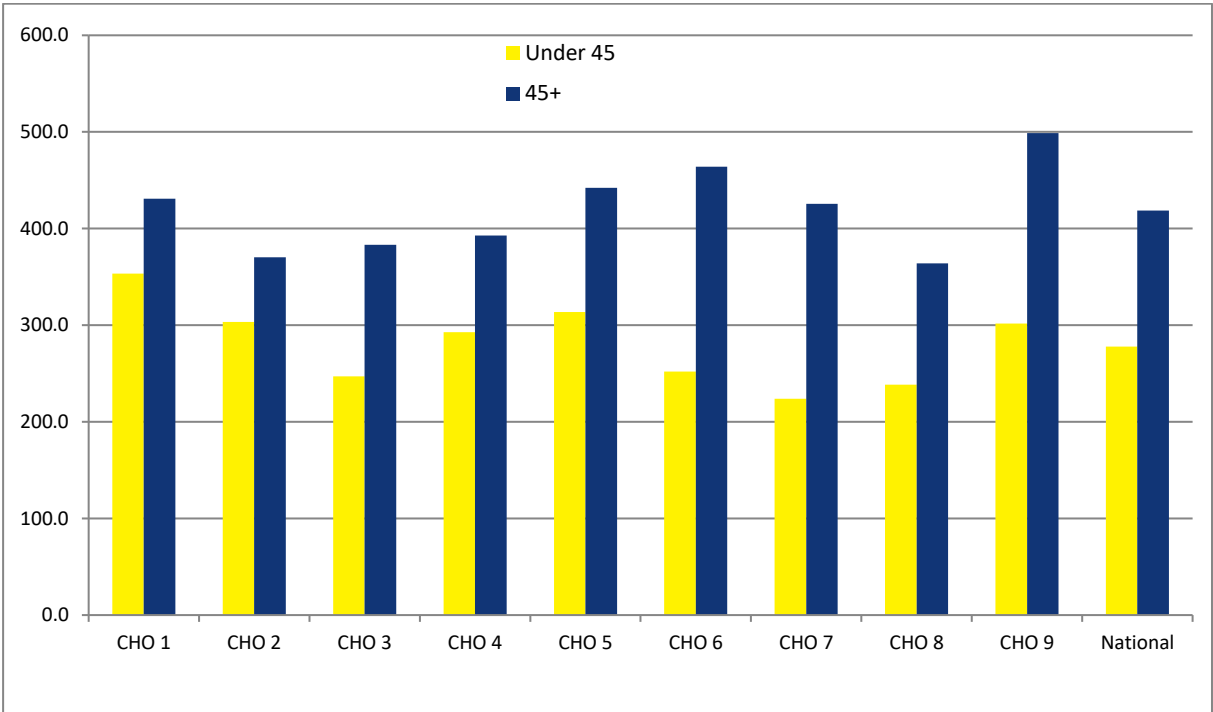
Twelve per cent of all admissions had non-manual occupations, 8% were lower professionals, almost 6% were manual skilled and 5% were unskilled. However, it is worth noting that 57% of returns for CHO 2 did not specify an occupation, making assignment to a socio-economic group impossible.

Diagnosis

Depressive disorders accounted for 32% of all admissions and 34% of first admissions for CHO 2; schizophrenia accounted for 17% of all and 13% of first admissions; and neuroses accounted for 12% of all and almost 18% of first admissions.

All and first admission rates in CHO 2 were highest for depressive disorders, at 105.5 (Figure 2) and 40.6 per 100,000, respectively. Schizophrenia had the second-highest rate of all admissions in CHO 2, at 56.1, followed by neuroses, at 38.6 and personality and behavioural disorders, at 36.9. Neuroses had the second-highest rate of first admissions in CHO 2, at 20.7 per 100,000, followed by schizophrenia, at 15.9.

Figure 1: All admissions by age category by CHO area. Ireland 2021. Rates per 100,000 total population



Legal status

Involuntary admissions accounted for 15% of all and 12% of first admissions for CHO 2. The rate of all involuntary admissions in CHO 2 was 50.5, while that for first admissions was 14.3 per 100,000 (Figure 3).

Hospital type

Eighty-one per cent of all admissions for CHO 2 were to general hospital psychiatric units, 3% were to psychiatric hospitals/continuing care units and 16% were to independent/private and private charitable centres.

Discharges

There were 1,478 discharges (including deaths) for CHO 2 in 2021. Twenty-eight per cent of discharges occurred within one week of admission, 18% occurred within one to two weeks and 21%

occurred within two to four weeks of admission. Ninety-four per cent of discharges occurred within three months of admission. This is similar to the pattern observed nationally.

Discharges for CHO 2 accounted for 9% of all discharges nationally and 9% of all in-patient days. The average length of stay for all discharges for CHO 2 was 53.2 days (median 15 days (Figure 4)). This compares with the national average of 55.6 days (median 14 days).

When discharges with a length of stay of one year or more were excluded, discharges for CHO 2 accounted for 9% of discharges and 10% of in-patient days. The average length of stay for discharges, excluding those with a length of stay of one year or more, was 27.0 days (median 15 days).

References

Central Statistics Office (2017) Census of Population 2016, www.cso.ie.

Daly A and Craig S (2022) HRB StatLink Series 10 National Psychiatric In-Patient Reporting System (NPIRS) Annual Report on the *Activities of Irish Psychiatric Units and Hospitals 2021*. Dublin: Health Research Board.

Figure 2: Admissions for selected diagnostic groups by CHO area. Ireland 2021. Rates per 100,000 total population

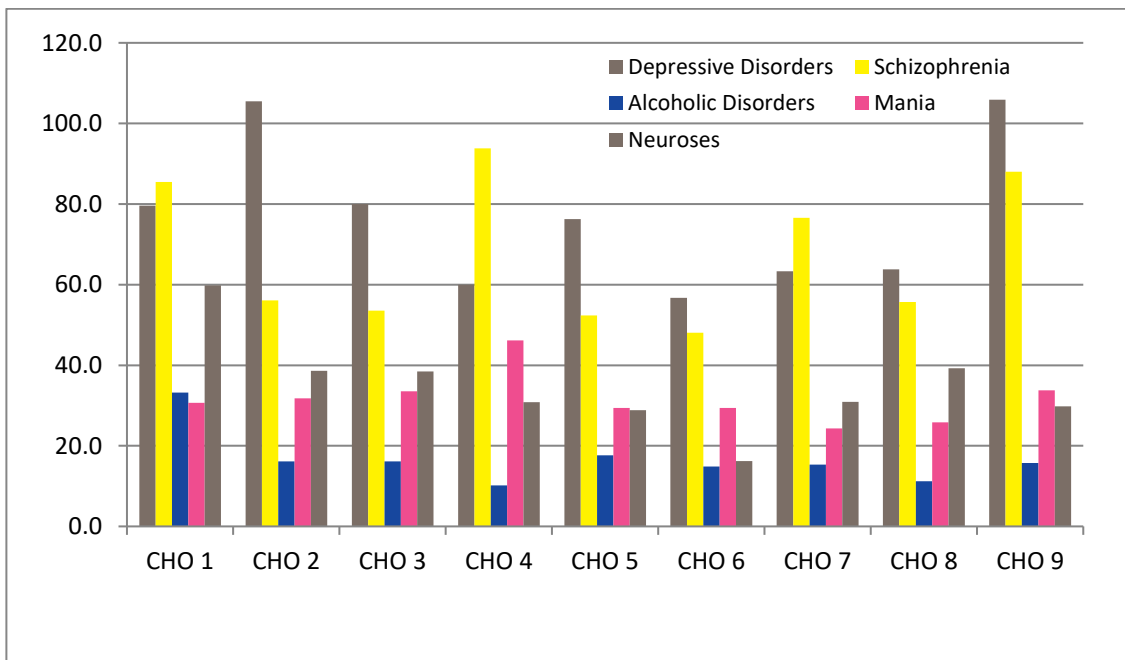


Figure 3: All and first involuntary admissions by CHO area. Ireland 2021. Rates per 100,000 total population

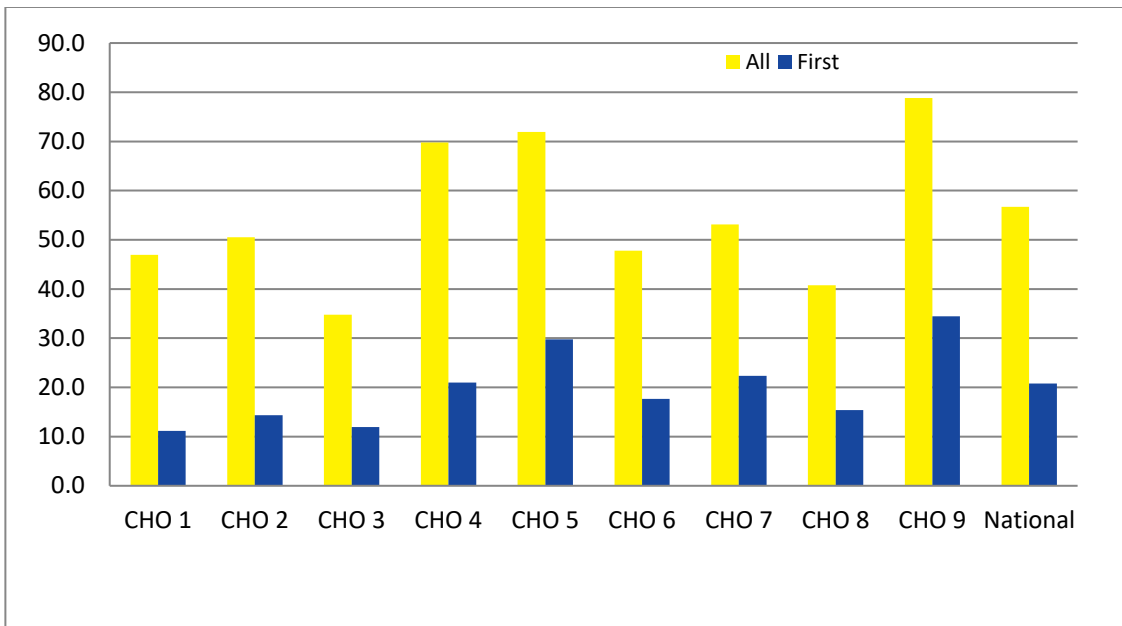


Figure 4: Average length of stay (days) for all discharges and discharges up to 1 year by CHO area. Ireland 2021

