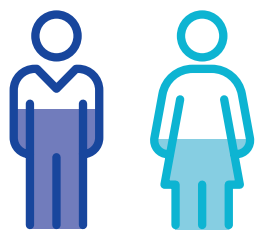
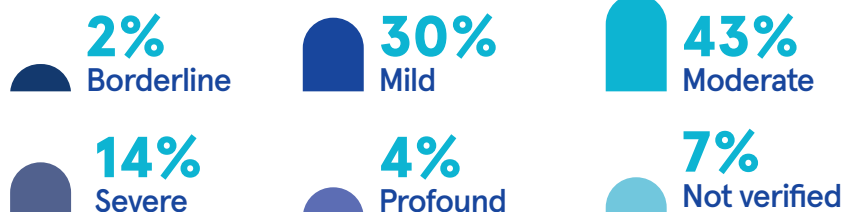


22,746

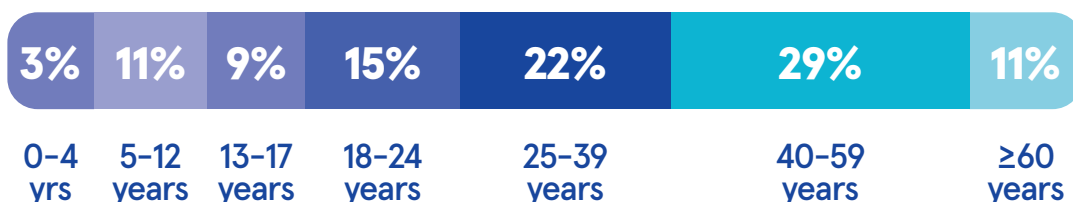
people with a
primary disability
of intellectual

Level of intellectual disability



57% male
43% female

Age breakdown



Living arrangements

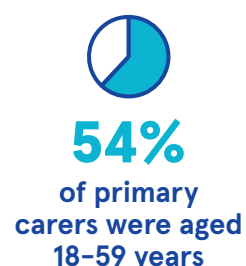
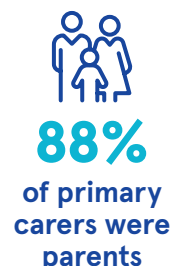


Primary carer

Of those with a primary carer:



9,062
reported
having a
primary carer



Services



31%
accessed
residential
services



83%
accessed
day
services



7%
accessed
overnight
respite



14%
accessed
supports for
daily living



63%
accessed
specialist
supports



Residential places

7,046
currently accessed

1,306
enhancement required

891
new places required



Day service places

20,254
currently accessed

3,074
enhancement required

878
new places required



Overnight respite places

1,611
currently accessed

526
enhancement required

621
new places required



Supports for daily living

4,181
currently accessed

712
enhancement required

513
new places required



Specialist supports

40,741
currently accessed

16,322
enhancement required

2,581
new places required

Most commonly accessed



6,229
social
work



5,721
speech and
language therapy



4,909
occupational
therapy