

National Psychiatric In-patient Reporting System (NPIRS) – CHO 6 Bulletin

Introduction

This bulletin is a synopsis of data for CHO 6 from the NPIRS for 2019 and that reported in *Activities of Irish Psychiatric Units and Hospitals 2019 Main Findings* (Daly and Craig 2020). The address from which a person was admitted was used to assign him/her to a CHO area and, thus, CHO area refers to the CHO area of residence of admissions. CHO 6 covers the areas of Dun Laoghaire, Dublin South East and East Wicklow.

The rates reported below were calculated using the Census of Population 2016 (Central Statistics Office 2017) and all rates are per 100,000 total population. It was not possible to calculate rates for socio-economic groups for each of the CHO areas and, thus, proportions are presented for socio-economic group.

All and first admissions

There were 1,391 admissions for CHO 6 in 2019, a rate of 327.5 per 100,000 (Table 1). Admissions for CHO 6 accounted for 8% of all admissions in 2019. There were 315 first admissions, a rate of 74.2 per 100,000 and there were 968 re-admissions, representing a rate of 227.9 per 100,000.

Gender and age

Males accounted for 46% of all and 50% of first admissions. Females had a higher rate of all admissions than males, at 341.6 per 100,000, compared with 312.5 for males (Table 1). Males had a slightly higher rate of first admissions than females, at 76.2, compared with 72.2 for females.

Table 1: CHOs. All and first admissions. Gender. Ireland 2019. Rates per 100,000 total population

	All			First		
	Male	Female	Total	Male	Female	Total
CHO 1	372.2	311.1	341.6	114.9	78.9	96.9
CHO 2	336.3	284.2	310.1	131.5	87.3	109.2
CHO 3	291.2	305.1	298.2	93.4	77.6	85.5
CHO 4	402.4	344.9	373.3	132.6	102.9	117.6
CHO 5	368.4	334.1	351.1	140.8	100.1	120.3
CHO 6	312.5	341.6	327.5	76.2	72.2	74.2
CHO 7	353.5	371.0	362.4	116.4	105.0	110.6
CHO 8	350.1	320.5	335.3	153.2	106.3	129.7
CHO 9	404.7	400.3	402.5	122.3	116.9	119.6
Total	361.4	340.7	350.9	124.2	97.7	110.8

The 55–64 year age group had the highest rate of all admissions for CHO 6, at 499.9 per 100,000, followed by the 65–74 year age group, at 476.0 and the 45–54 year age group, at 474.1. The 25–34 year age group had the lowest rate of all admissions, at 322.2 per 100,000.

The 18–19 year age group had the highest rate of first admissions in CHO 6, at 174.3 per 100,000, followed by the 75 year and over age group, at 136.4 and the 20–24 year age group, at 115.1. The 35–44 year age group had the lowest rate of first admissions, at 72.8.

Age groups were condensed into two groups: under 45 years and 45 years and over. The 45 year and over age group had the highest rate of admissions in all CHO areas, with rates ranging from 564.3 per 100,000 in CHO 9 to 364.7 in CHO 2 (Figure 1). The rate of admission for the 45 year and over group in CHO 6 (481.0) was twice that of the under 45 year group (235.4).

Marital status

Single persons accounted for 45% of all and 39% of first admissions for CHO 6; married persons accounted for 27% of all and 31% of first

admissions; widowed persons accounted for 7% of all and 5% of first admissions; and divorced persons accounted for 2% of all and 1% of first admissions.

Socio-economic group

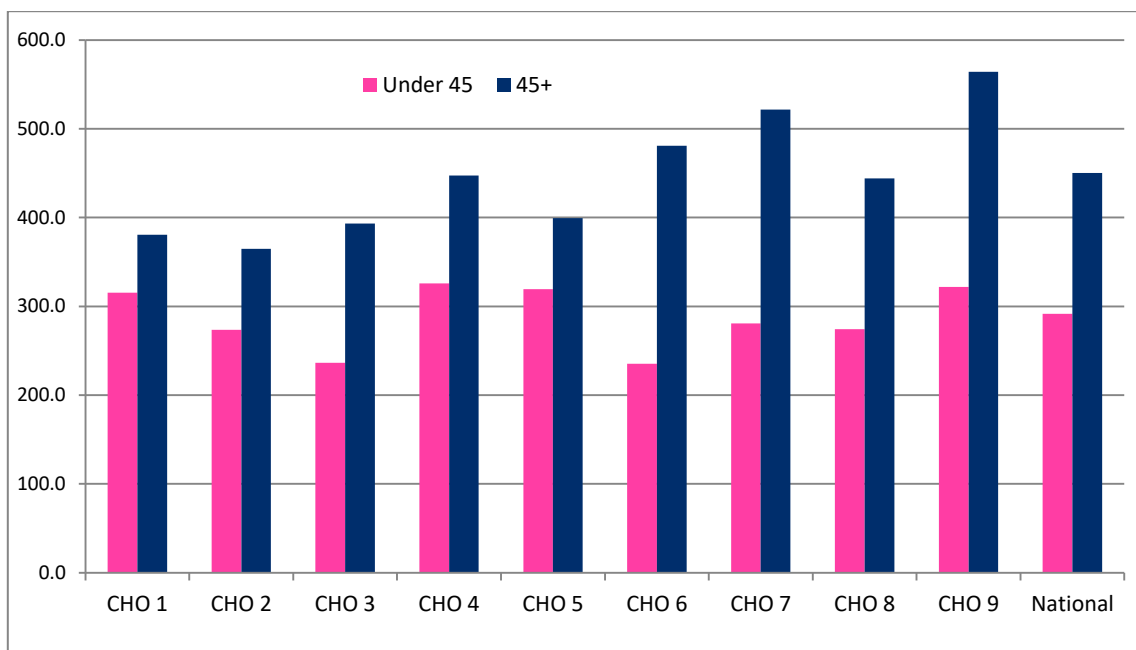
Ten per cent of all admissions were non-manual, almost 9% were lower professional and 5% were employers and managers. However, it is worth noting that 64% of returns for CHO 6 did not specify an occupation, making assignment to a socio-economic group impossible..

Diagnosis

Depressive disorders accounted for 19% of all admissions and 21% of first admissions for CHO 6; schizophrenia accounted for 20% of all and 16% of first admissions; and alcoholic disorders accounted for almost 14% of all and 8% of first admissions.

All admission rates in CHO 6 were highest for schizophrenia, at 64.3, followed by depressive disorders, at 63.1 per 100,000, and alcoholic disorders, at 45.4 (Figure 2). First admission rates were highest for depressive disorders, at 15.3 per 100,000, followed by schizophrenia, at 11.8 and neuroses, at 6.1.

Figure 1: All admissions by age category by CHO area. Ireland 2019. Rates per 100,000 total population



Legal status

Involuntary admissions accounted for 13% of all and 18% of first admissions for CHO 6. The rate of all involuntary admissions in CHO 6 was 43.1, while that for first admissions was 13.2 per 100,000 (Figure 3).

Hospital type

Forty-six per cent of all admissions for CHO 6 were to independent/private and private charitable centres 43% were to psychiatric hospitals/continuing care units and 11% were to general hospital psychiatric units, and.

Discharges

There were 1,406 discharges (1,392 discharges and 14 deaths) for CHO 6 in 2019. Almost 21% of discharges occurred within one week of admission, 16% occurred within one to two weeks and 20% occurred within two to four weeks of admission. Ninety-two per cent of discharges occurred within three months of admission. This is similar to the pattern observed nationally.

Discharges for CHO 6 accounted for 8% of all discharges and 7% of all in-patient days. The average length of stay for all discharges for CHO 6 was 51.5 days (median 22 days) (Figure 4). This compares with the national average of 64.2 days (median 15 days).

When discharges with a length of stay of one year or more were excluded, discharges for CHO 6 again accounted for 8% of discharges and 10% of in-patient days. The average length of stay for discharges, excluding those with a length of stay of one year or more, was 33.2 days (median 22 days), the longest average length of stay amongst all areas.

References

Central Statistics Office (2017) Census of Population 2016, www.cso.ie.
 Daly A and Craig S (2020) *Activities of Irish Psychiatric Units and Hospitals 2019*. HRB Statistics Series 41. Dublin: Health Research Board.

Figure 2: Admissions for selected diagnostic groups by CHO area. Ireland 2019. Rates per 100,000 total population

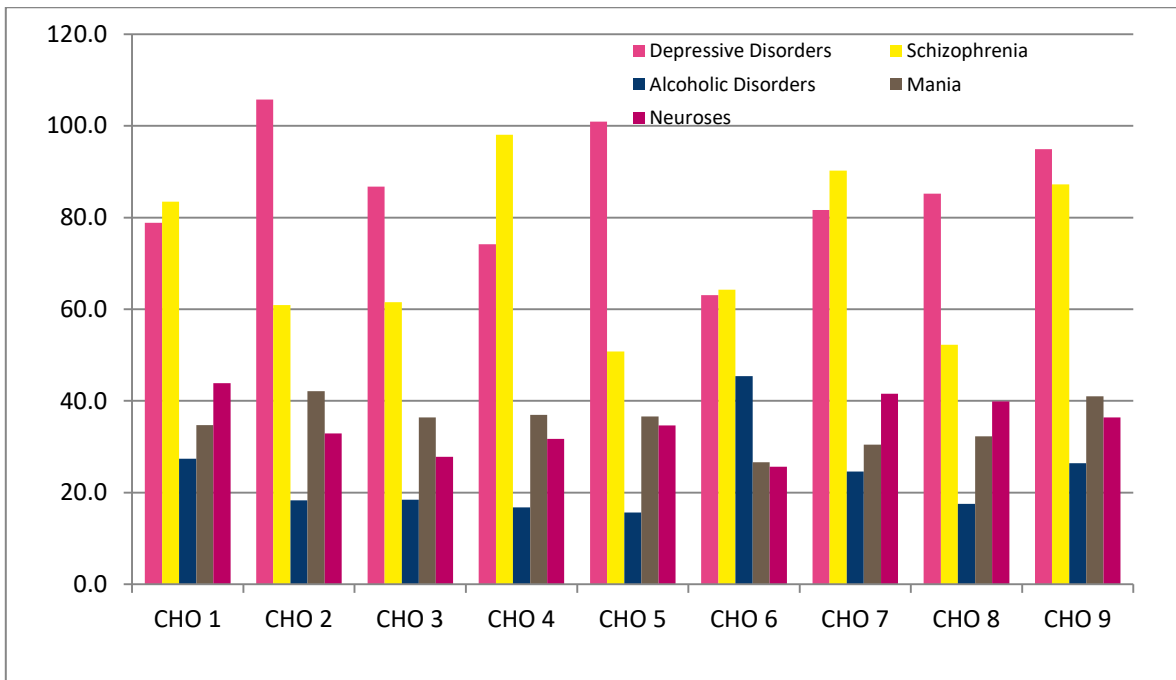


Figure 3: All and first involuntary admissions by CHO area. Ireland 2019. Rates per 100,000 total population

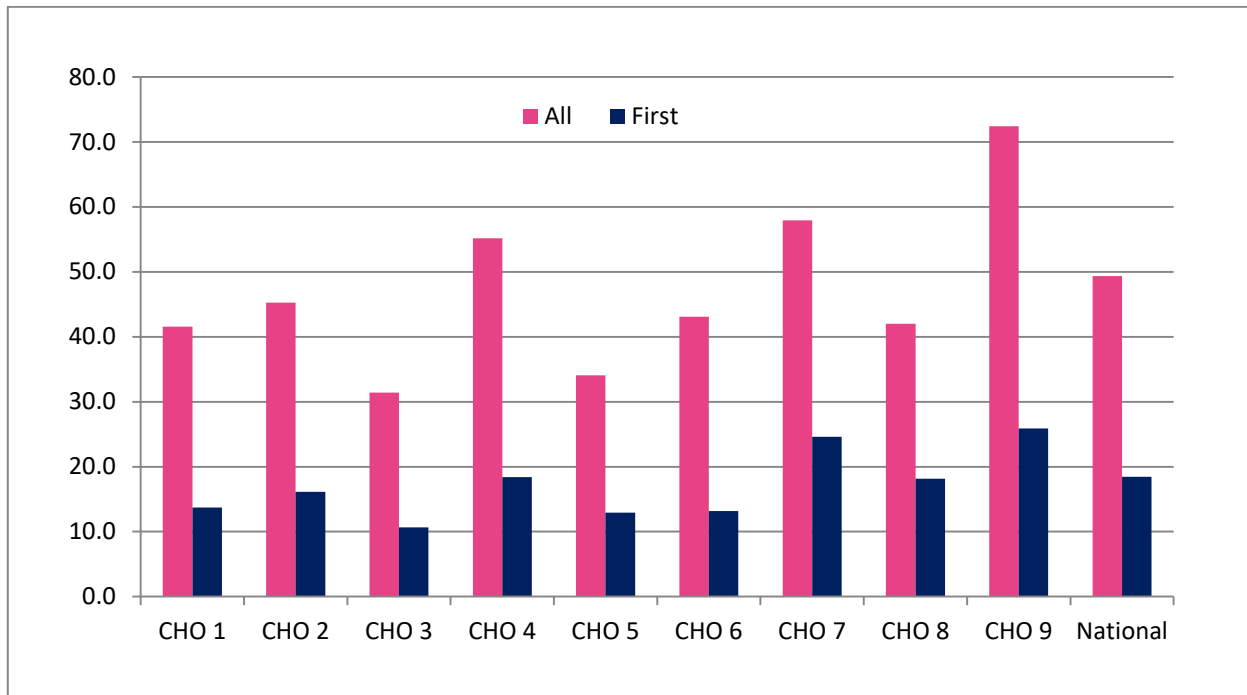
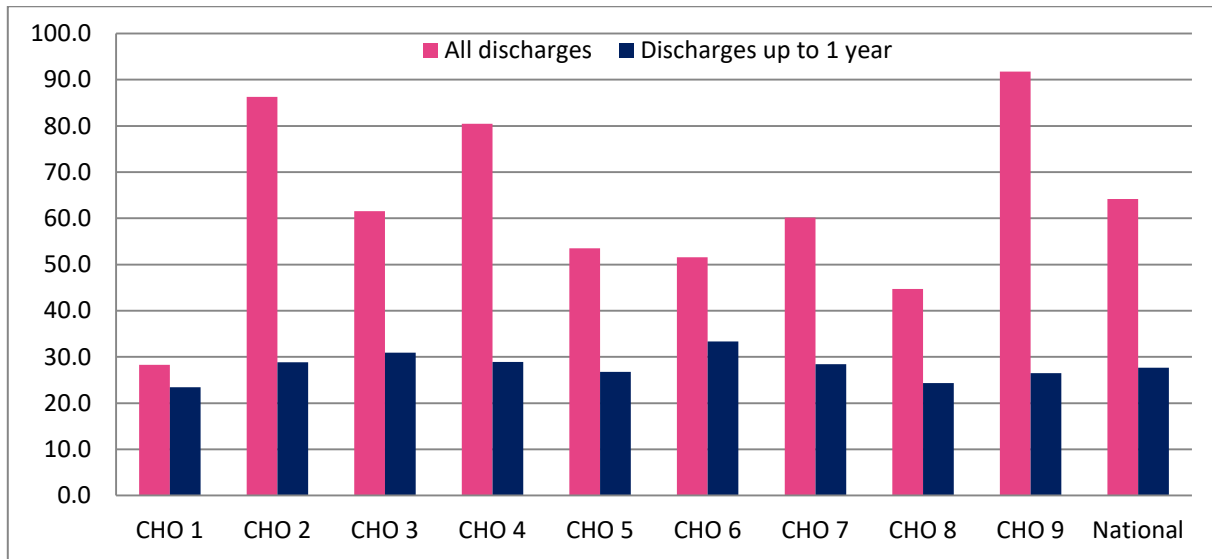


Figure 4: Average length of stay (days) for all discharges and discharges up to 1 year by CHO area. Ireland 2019.



Contact details for queries regarding this bulletin or the NPIRS:
 Antoinette Daly
 T: +353 1 2345 142
 E: adaly@hrb.ie

Health Research Board
 Grattan House
 67-72 Lower Mount Street
 Dublin 2
 www.hrb.ie

