

# National Psychiatric In-patient Reporting System (NPIRS) – CHO 7 Bulletin

## Introduction

This bulletin is a synopsis of data for CHO 7 from the NPIRS for 2018 and that reported in *Activities of Irish Psychiatric Units and Hospitals 2018 Main Findings* (Daly and Craig 2019). The address from which a person was admitted was used to assign him/her to a CHO area and, thus, CHO area refers to the CHO area of residence of admissions. CHO 7 covers the areas of Dublin South City, Dublin South West and West and County Kildare.

The rates reported below were calculated using the Census of Population 2016 (Central Statistics Office 2017) and all rates are per 100,000 total population. It was not possible to calculate rates for socio-economic groups for each of the CHO areas and, thus, proportions are presented for socio-economic group.

## All and first admissions

There were 2,481 admissions for CHO 7 in 2018, a rate of 368.6 per 100,000 (Table 1). Admissions for CHO 7 accounted for almost 15% of all admissions to psychiatric units and hospitals in 2018. There were 946 first admissions, a rate of 140.5 per 100,000. Re-admissions (1,535) accounted for 62% of all admissions, representing a rate of 228.0 per 100,000.

## Gender and age

Males accounted for 47% of all and 50% of first admissions. Females had a higher rate of all admissions than males, at 387.8 per 100,000, compared with 348.8 for males (Table 1). The first admissions rates for males and females were similar, at 140.8 for males compared with 140.3 for females.

**Table 1: CHOs. All and first admissions. Gender. Ireland 2018. Rates per 100,000 total population**

	All			First		
	Male	Female	Total	Male	Female	Total
CHO 1	405.3	355.1	380.1	126.6	93.6	110.1
CHO 2	327.4	295.6	311.4	129.7	94.3	111.9
CHO 3	328.7	326.9	327.8	117.9	109.1	113.5
CHO 4	382.5	357.8	370.0	130.8	112.1	121.3
CHO 5	407.2	340.2	373.5	164.4	125.1	144.6
CHO 6	302.1	325.9	314.3	86.0	81.5	83.7
CHO 7	348.8	387.8	368.6	140.8	140.3	140.5
CHO 8	334.5	326.7	330.6	163.7	128.6	146.0
CHO 9	397.5	406.9	402.3	143.3	135.9	139.5
<b>Total</b>	<b>362.0</b>	<b>352.2</b>	<b>357.0</b>	<b>136.8</b>	<b>117.1</b>	<b>126.8</b>

The 65–74 year age group had the highest rate of all admissions for CHO 7, at 628.1 per 100,000, followed by the 55–64 year age group, at 552.7, and the 20–24 year age group, at 541.6. The 25–34 year age group had the lowest rate of all admissions, at 429.3 per 100,000.

The 18–19 year age group had the highest rate of first admissions in CHO 7, at 302.7 per 100,000, followed by the 20–24 year age group, at 292.4, and the 25–34 year age group, at 193.3. The 55–64 year age group had the lowest rate of first admissions, at 155.8.

Age groups were condensed into two groups: under 45 years and 45 years and over. The 45 year and over age group had the highest rate of admissions in all CHO areas, with rates ranging from 536.1 per 100,000 in CHO 9 to 374.6 in CHO 2 (Figure 1). The rate of admission for the 45 year and over group in CHO 6 (451.8) and CHO 7 (533.6) was almost twice that of the under 45 year group.

### Marital status

Single persons accounted for over half of all (58%) and first (58%) admissions for CHO 7; married

persons accounted for 25% of all and 24% of first admissions; widowed persons accounted for 4% of all and 3% of first admissions; and divorced persons accounted for 3% of all and 2% of first admissions.

### Socio-economic group

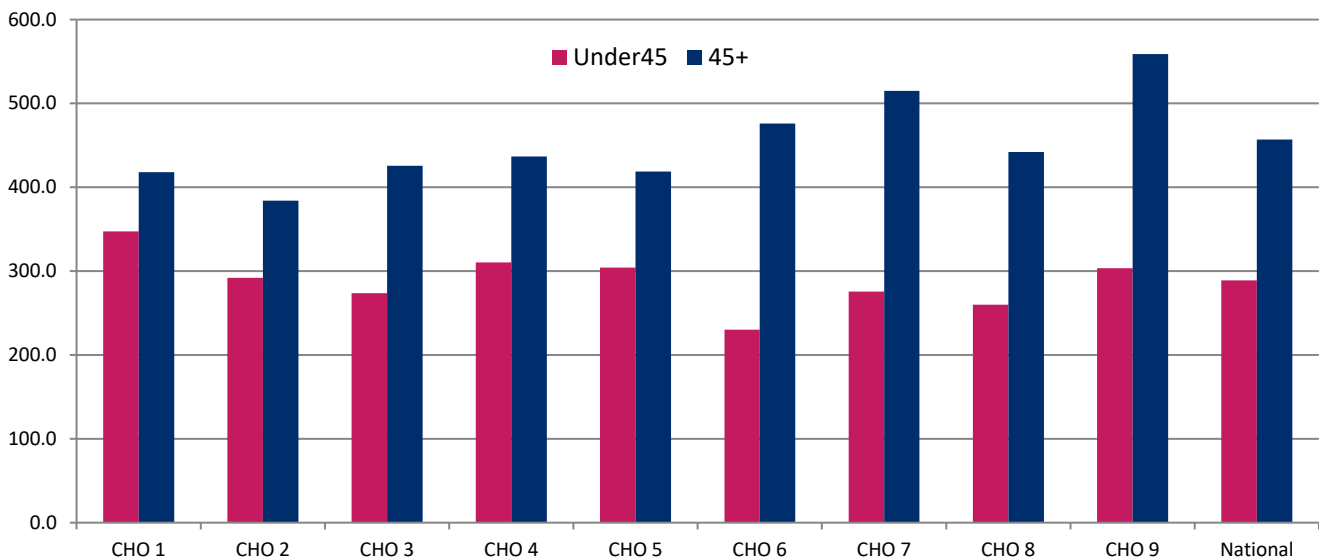
Almost 16% of all admissions had non-manual occupations, 10% were lower professional, 5% were employers and managers and a further 5% were manual skilled. However, it is worth noting that 51% of returns for CHO 7 did not specify an occupation, making assignment to a socio-economic group impossible. Proportions for first admissions were somewhat similar.

### Diagnosis

Depressive disorders accounted for 25% of all admissions and 25% of first admissions for CHO 7; schizophrenia accounted for 23% of all and 17% of first admissions; and mania accounted for 8% of all and 6% of first admissions.

All admission rates in CHO 7 were highest for depressive disorders, at 90.8 per 100,000 (Figure 2), followed by schizophrenia, at 84.2 and neuroses, at 37.4. Depressive disorders had the highest rate of first admissions in CHO 7, at 35.5, followed by

Figure 1: All admissions by age category by CHO area. Ireland 2018. Rates per 100,000 total population



followed by schizophrenia, at 24.4 and neuroses, at 17.5.

**Legal status**

Involuntary admissions accounted for 14% of all and 14% of first admissions for CHO 7. The rate of all involuntary admissions in CHO 7 was 50.2 the third-highest rate amongst all CHO areas, while that for first admissions was 20.4 per 100,000, the second-highest amongst all CHO areas (Figure 3).

**Hospital type**

Sixty per cent of all admissions for CHO 7 were to general hospital psychiatric units, 2% were to psychiatric hospitals/continuing care units and 38% were to independent/private and private charitable centres.

**Discharges**

There were 2,467 discharges (2,455 discharges and 12 deaths) for CHO 7 in 2018. Twenty-eight per cent of discharges occurred within one week of admission, 15% occurred within one to two weeks and 18% occurred within two to four weeks of admission. Ninety-four per cent of discharges occurred within

three months of admission. This is similar to the pattern observed nationally.

Discharges for CHO 7 accounted for 15% of all discharges and 16% of all in-patient days. The average length of stay for all discharges for CHO 7 was 70.0 days (median 18 days), the second-longest average length of stay amongst all areas (Figure 4). This compares with the national average of 62.9 days (median 15 days).

When discharges with a length of stay of one year or more were excluded, discharges for CHO 7 again accounted for 15% of discharges and 16% of in-patient days. The average length of stay for discharges, excluding those with a length of stay of one year or more, was 29.5 days (median 17 days), also the second-longest average length of stay amongst all areas.

**References**

Central Statistics Office (2017) Census of Population 2016, [www.cso.ie](http://www.cso.ie).  
 Daly A and Craig S (2019) *Activities of Irish Psychiatric Units and Hospitals 2018*. HRB Statistics Series 39. Dublin: Health Research Board.

**Figure 2: Admissions for selected diagnostic groups by CHO area. Ireland 2018. Rates per 100,000 total population**

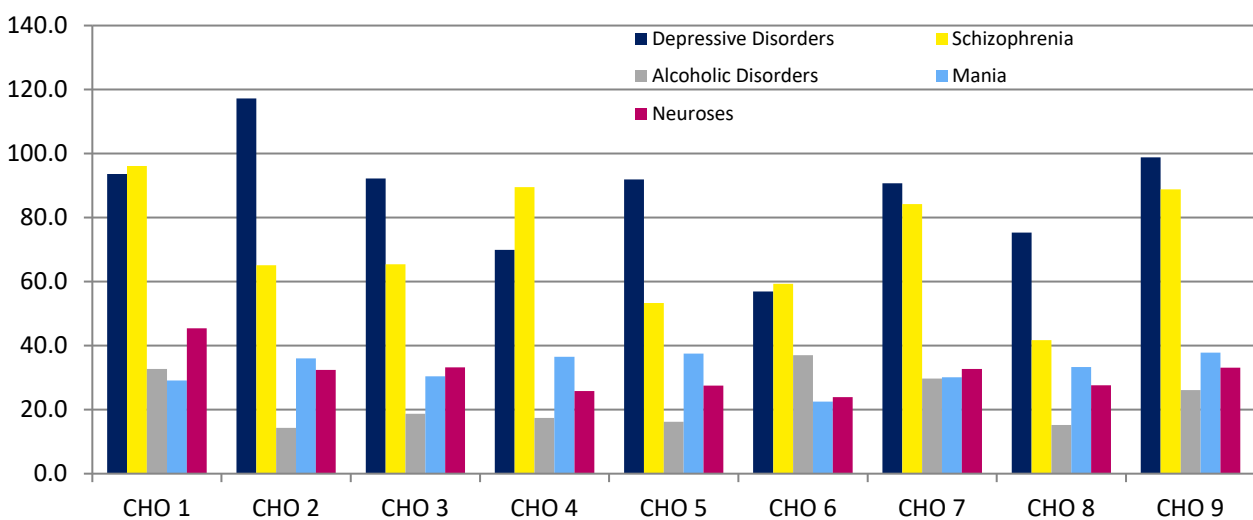


Figure 3: All and first involuntary admissions by CHO area. Ireland 2018. Rates per 100,000 total population

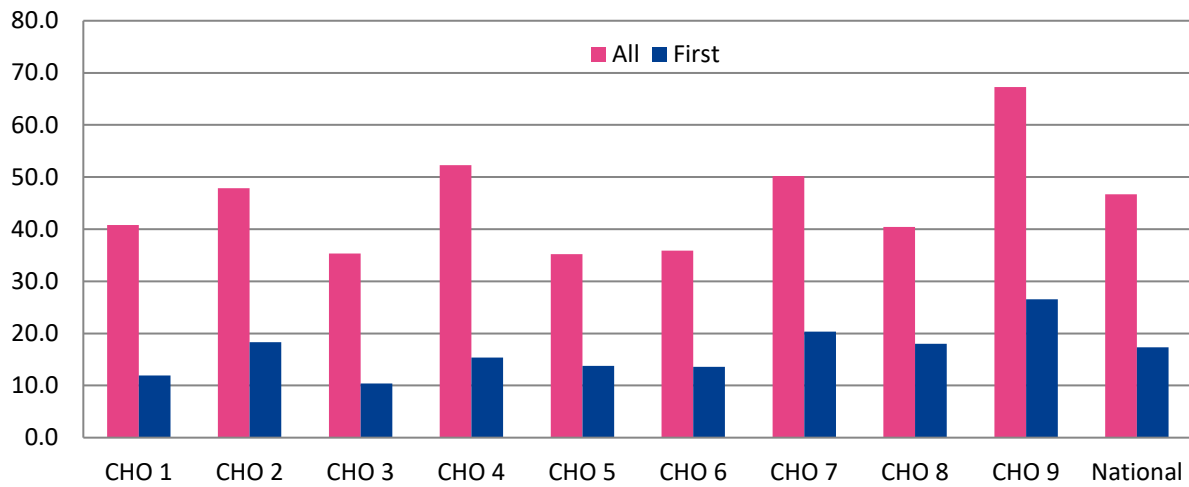
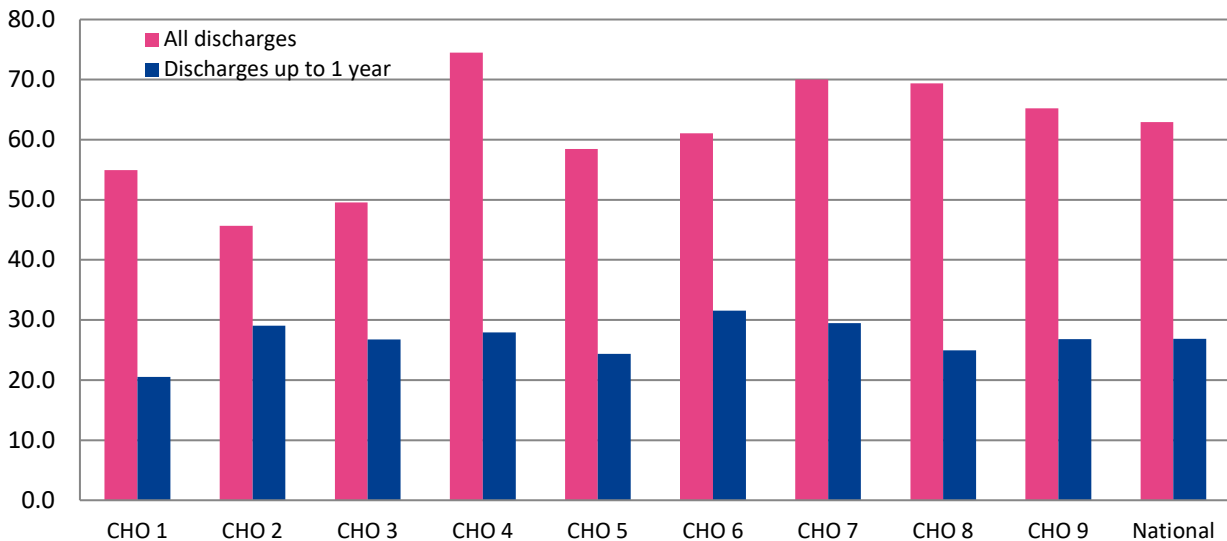


Figure 4: Average length of stay (days) for all discharges and discharges up to 1 year by CHO area. Ireland 2018.



Contact details for queries regarding this bulletin or the NPIRS:  
 Antoinette Daly  
 T: +353 1 2345 142  
 E: adaly@hrb.ie

**Health Research Board**  
 Grattan House  
 67-72 Lower Mount Street  
 Dublin 2  
 www.hrb.ie

