

National Psychiatric In-patient Reporting System (NPIRS) – CHO 6 Bulletin

Introduction

This bulletin is a synopsis of data for CHO 6 from the NPIRS for 2018 and that reported in *Activities of Irish Psychiatric Units and Hospitals 2018 Main Findings* (Daly and Craig 2019). The address from which a person was admitted was used to assign him/her to a CHO area and, thus, CHO area refers to the CHO area of residence of admissions. CHO 6 covers the areas of Dun Laoghaire, Dublin South East and East Wicklow.

The rates reported below were calculated using the Census of Population 2016 (Central Statistics Office 2017) and all rates are per 100,000 total population. It was not possible to calculate rates for socio-economic groups for each of the CHO areas and, thus, proportions are presented for socio-economic group.

All and first admissions

There were 1,409 admissions for CHO 6 in 2018, a rate of 314.3 per 100,000 (Table 1). Admissions for CHO 6 accounted for 8% of all admissions in 2018. There were 375 first admissions, a rate of 83.7 per 100,000, the lowest first admission rate of all areas. Re-admissions (1,034) accounted for 73% of all admissions, representing a rate of 230.7 per 100,000.

Gender and age

Males accounted for 47% of all and 50% of first admissions. Females had a higher rate of all admissions than males, at 325.9 per 100,000, compared with 302.1 for males (Table 1). Males had a slightly higher rate of first admissions than females, at 86.0, compared with 81.5 for females.

Table 1: CHOs. All and first admissions. Gender. Ireland 2018. Rates per 100,000 total population

| | All | | | First | | |
|--------------|--------------|--------------|--------------|--------------|--------------|--------------|
| | Male | Female | Total | Male | Female | Total |
| CHO 1 | 405.3 | 355.1 | 380.1 | 126.6 | 93.6 | 110.1 |
| CHO 2 | 327.4 | 295.6 | 311.4 | 129.7 | 94.3 | 111.9 |
| CHO 3 | 328.7 | 326.9 | 327.8 | 117.9 | 109.1 | 113.5 |
| CHO 4 | 382.5 | 357.8 | 370.0 | 130.8 | 112.1 | 121.3 |
| CHO 5 | 407.2 | 340.2 | 373.5 | 164.4 | 125.1 | 144.6 |
| CHO 6 | 302.1 | 325.9 | 314.3 | 86.0 | 81.5 | 83.7 |
| CHO 7 | 348.8 | 387.8 | 368.6 | 140.8 | 140.3 | 140.5 |
| CHO 8 | 334.5 | 326.7 | 330.6 | 163.7 | 128.6 | 146.0 |
| CHO 9 | 397.5 | 406.9 | 402.3 | 143.3 | 135.9 | 139.5 |
| Total | 362.0 | 352.2 | 357.0 | 136.8 | 117.1 | 126.8 |

The 55–64 year age group had the highest rate of all admissions for CHO 6, at 476.3 per 100,000, followed by the 65–74 year age group, at 468.6 and the 75 year and over age group, at 453.6. The 25–34 year age group had the lowest rate of all admissions, at 319.8 per 100,000.

The 18–19 year age group had the highest rate of first admissions in CHO 6, at 189.9 per 100,000, followed by the 20–24 year age group, at 163.4 and the 75 year and over age group, at 138.2. The 45–54 year age group had the lowest rate of first admissions, at 68.7.

Age groups were condensed into two groups: under 45 years and 45 years and over. The 45 year and over age group had the highest rate of admissions in all CHO areas, with rates ranging from 536.1 per 100,000 in CHO 9 to 374.6 in CHO 2 (Figure 1). The rate of admission for the 45 year and over group in CHO 6 (451.8) and CHO 7 (533.6) was almost twice that of the under 45 year group.

Marital status

Single persons accounted for 50% of all and 47% of first admissions for CHO 6; married persons

accounted for 28% of all and 27% of first admissions; widowed persons accounted for 5% of all and 5% of first admissions; and divorced persons accounted for 4% of all and 3% of first admissions.

Socio-economic group

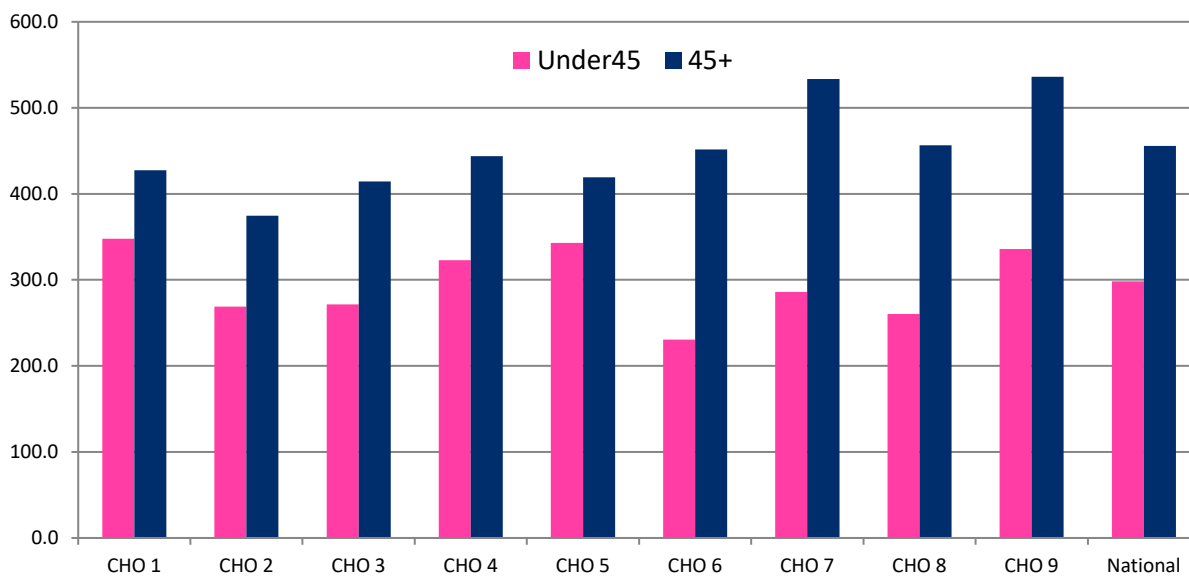
Nine per cent of all admissions were lower professional, a further 9% had non-manual occupations and 5% were higher professionals. However, it is worth noting that 63% of returns for CHO 6 did not specify an occupation, making assignment to a socio-economic group impossible. Proportions for first admissions were somewhat similar.

Diagnosis

Depressive disorders accounted for 18% of all admissions and 20% of first admissions for CHO 6; schizophrenia accounted for 19% of all and 12% of first admissions; and alcoholic disorders accounted for almost 12% of all and 13% of first admissions.

All admission rates in CHO 6 were highest for schizophrenia, at 59.3, followed by depressive disorders, at 56.9 per 100,000, and alcoholic disorders, at 37.0 (Figure 2). First admission rates were highest for depressive disorders, at 17.0 per 100,000, followed by alcoholic disorders, at 10.7 and schizophrenia, at 9.8.

Figure 1: All admissions by age category by CHO area. Ireland 2018. Rates per 100,000 total population



Legal status

Involuntary admissions accounted for 11% of all and 16% of first admissions for CHO 6. The rate of all involuntary admissions in CHO 6 was 35.9, while that for first admissions was 13.6 per 100,000 (Figure 3).

Hospital type

Forty-four per cent of all admissions for CHO 6 were to independent/private and private charitable centres 42% were to psychiatric hospitals/continuing care units and 14% were to general hospital psychiatric units, and.

Discharges

There were 1,383 discharges (1,370 discharges and 13 deaths) for CHO 6 in 2018. Twenty-three per cent of discharges occurred within one week of admission, 15% occurred within one to two weeks and 20% occurred within two to four weeks of admission. Ninety-three per cent of discharges occurred within three months of admission. This is similar to the pattern observed nationally.

Discharges for CHO 6 accounted for 8% of all discharges and 8% of all in-patient days. The average length of stay for all discharges for CHO 6 was 61.6 days (median 22 days) (Figure 4). This compares with the national average of 62.9 days (median 15 days).

When discharges with a length of stay of one year or more were excluded, discharges for CHO 6 again accounted for 8% of discharges and almost 10% of in-patient days. The average length of stay for discharges, excluding those with a length of stay of one year or more, was 31.6 days (median 21 days), the longest average length of stay amongst all areas.

References

Central Statistics Office (2017) Census of Population 2016, www.cso.ie.
 Daly A and Craig S (2019) *Activities of Irish Psychiatric Units and Hospitals 2018*. HRB Statistics Series 39. Dublin: Health Research Board.

Figure 2: Admissions for selected diagnostic groups by CHO area. Ireland 2018. Rates per 100,000 total population

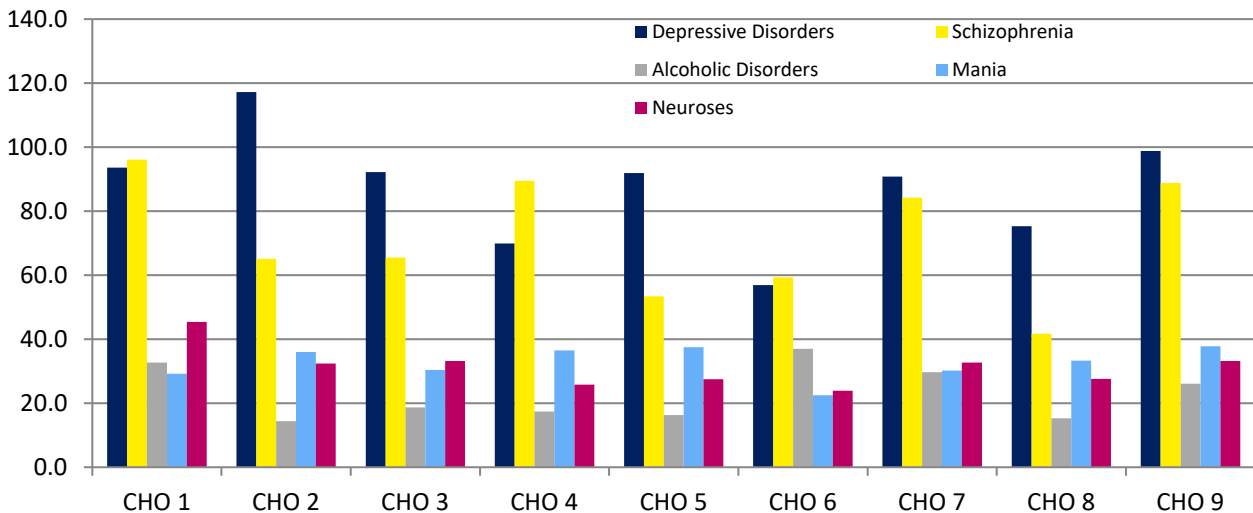


Figure 3: All and first involuntary admissions by CHO area. Ireland 2018. Rates per 100,000 total population

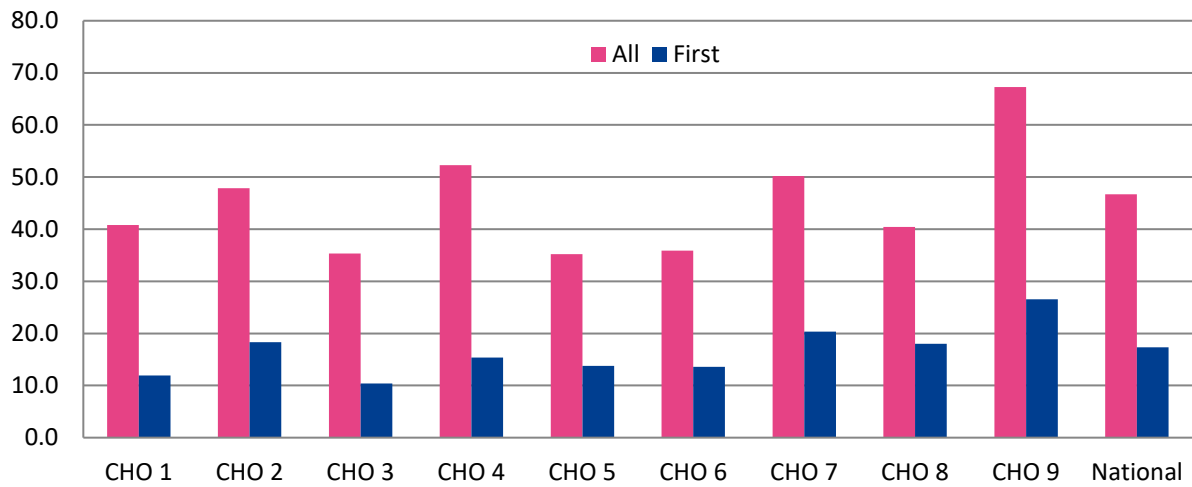
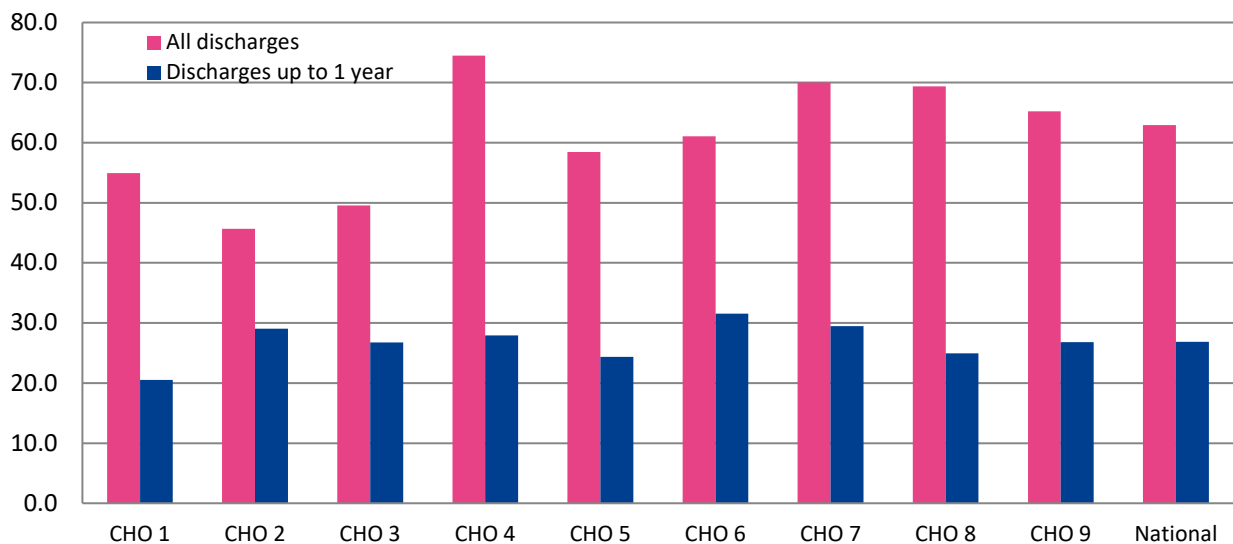


Figure 4: Average length of stay (days) for all discharges and discharges up to 1 year by CHO area. Ireland 2018.



Contact details for queries regarding this bulletin or the NPIRS:
 Antoinette Daly
 T: +353 1 2345 142
 E: adaly@hrb.ie

Health Research Board
 Grattan House
 67-72 Lower Mount Street
 Dublin 2
 www.hrb.ie

