

National Psychiatric In-patient Reporting System (NPIRS) – CHO 2 Bulletin

Introduction

This bulletin is a synopsis of data for CHO 2 from the NPIRS for 2018 and that reported in *Activities of Irish Psychiatric Units and Hospitals 2018 Main Findings* (Daly and Craig 2019). The address from which a person was admitted was used to assign him/her to a CHO area and, thus, CHO area refers to the CHO area of residence of admissions. CHO 2 covers the counties of Galway, Mayo and Roscommon.

The rates reported below were calculated using the Census of Population 2016 (Central Statistics Office 2017) and all rates are per 100,000 total population. It was not possible to calculate rates for socio-economic groups for each of the CHO areas and, thus, proportions are presented for socio-economic group.

All and first admissions

There were 1,411 admissions for CHO 2 in 2018, a rate of 311.4 per 100,000, the lowest rate amongst all CHO (Table 1). Admissions for CHO 2 accounted for 8% of all admissions to psychiatric units and hospitals in 2018. There were 507 first admissions, a rate of 111.9 per 100,000. Re-admissions (904) accounted for 64% of all admissions, with a rate of 199.5 per 100,000.

Gender and age

Males accounted for 52% of all and 58% of first admissions for CHO 2. Similarly, males had a higher rate of all, at 327.4, and first admissions, at 129.7, than females, at 295.6 for all and 94.3 for first (Table 1).

Table 1: CHOs. All and first admissions. Gender. Ireland 2018. Rates per 100,000 total population

	All			First		
	Male	Female	Total	Male	Female	Total
CHO 1	405.3	355.1	380.1	126.6	93.6	110.1
CHO 2	327.4	295.6	311.4	129.7	94.3	111.9
CHO 3	328.7	326.9	327.8	117.9	109.1	113.5
CHO 4	382.5	357.8	370.0	130.8	112.1	121.3
CHO 5	407.2	340.2	373.5	164.4	125.1	144.6
CHO 6	302.1	325.9	314.3	86.0	81.5	83.7
CHO 7	348.8	387.8	368.6	140.8	140.3	140.5
CHO 8	334.5	326.7	330.6	163.7	128.6	146.0
CHO 9	397.5	406.9	402.3	143.3	135.9	139.5
Total	362.0	352.2	357.0	136.8	117.1	126.8

The 20–24 year age group had the highest rate of all admissions for CHO 2, at 623.7 per 100,000, followed by the 35–44 year age group, at 437.6, and the 55–64 year age group, at 424.0. The 75 year and over age group had the lowest rate of all admissions, at 241.6 per 100,000.

The 18–19 year age group had the highest rate of first admissions for CHO 2, at 277.5 per 100,000, followed by the 20–24 year age group, at 263.9, and the 25–34 year age group, at 179.9. The 65–74 year age group had the lowest rate of all admissions, at 106.1 per 100,000.

Age groups were condensed into two groups: under 45 years and 45 years and over. The 45 year and over age group had the highest rate of admissions in all CHO areas, with rates ranging from 536.1 per 100,000 in CHO 9 to 374.6 in CHO 2 (Figure 1). The rate of admission for the 45 year and over group in CHO 6 (451.8) and CHO 7 (533.6) was almost twice that of the under 45 year group.

Marital status

Single persons accounted 62% of all and 61% of first admissions for CHO 2; married persons accounted

for 23% of all and 25% of first admissions; widowed persons accounted for 3% of all and almost 4% of first admissions; and divorced persons accounted for almost 3% of all and 2% of first admissions.

Socio-economic group

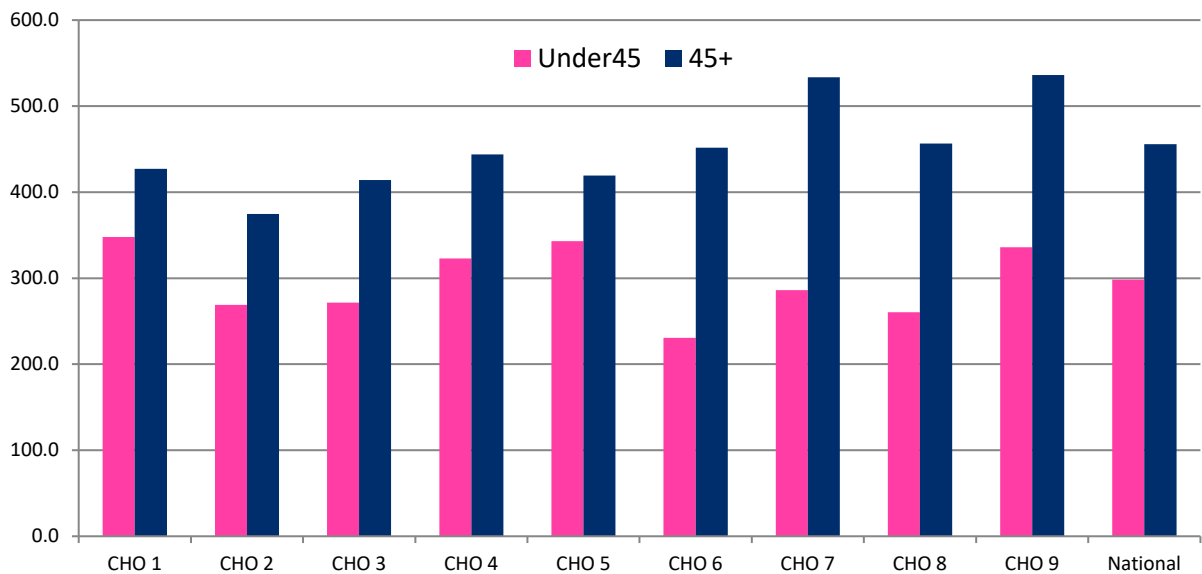
Thirteen per cent of all admissions had non-manual occupations, 9% had semi-skilled occupations, 8% were lower professionals and 7% were manual skilled. However, it is worth noting that 44% of returns for CHO 2 did not specify an occupation, making assignment to a socio-economic group impossible.

Diagnosis

Depressive disorders accounted for 38% of all admissions and 37% of first admissions for CHO 2; schizophrenia accounted for 21% of all and 19% of first admissions; and neuroses accounted for 10% of all and 16% of first admissions.

All and first admission rates in CHO 2 were highest for depressive disorders, at 117.2 (Figure 2) and 41.0 per 100,000, respectively. Schizophrenia had the second-highest rate of all admissions in CHO 2, at 65.1, followed by mania, at 36.0 and neuroses, at 32.4. Schizophrenia had the second-highest rate of first admissions in CHO 2, at 21.0 per 100,000, followed by neuroses, at 17.7.

Figure 1: All admissions by age category by CHO area. Ireland 2018. Rates per 100,000 total population



Legal status

Involuntary admissions accounted for 11% of all and 11% of first admissions for CHO 2. The rate of all involuntary admissions in CHO 2 was 47.9, while that for first admissions was 18.3 per 100,000, the third-highest amongst all CHOs (Figure 3).

Hospital type

Eighty per cent of all admissions for CHO 2 were to general hospital psychiatric units, 3% were to psychiatric hospitals/continuing care units and 18% were to independent/private and private charitable centres.

Discharges

There were 1,420 discharges (1,413 discharges and 7 deaths) for CHO 2 in 2018. Twenty-seven per cent of discharges occurred within one week of admission, 17% occurred within one to two weeks and 20% occurred within two to four weeks of admission. Ninety-four per cent of discharges occurred within three months of admission. This is similar to the pattern observed nationally.

Discharges for CHO 2 accounted for 8% of all discharges nationally and 6% of all in-patient days. The average length of stay for all discharges for CHO 2 was 45.7 days (median 17 days) (Figure 4). This compares with the national average of 62.9 days (median 15 days).

When discharges with a length of stay of one year or more were excluded, discharges for CHO 2 accounted for 9% of discharges and 7% of in-patient days. The average length of stay for discharges, excluding those with a length of stay of one year or more, was 29.1 days (median 17 days).

References

Central Statistics Office (2017) Census of Population 2016, www.cso.ie.
 Daly A and Craig S (2019) *Activities of Irish Psychiatric Units and Hospitals 2018*. HRB Statistics Series 39. Dublin: Health Research Board.

Figure 2: Admissions for selected diagnostic groups by CHO area. Ireland 2018. Rates per 100,000 total population

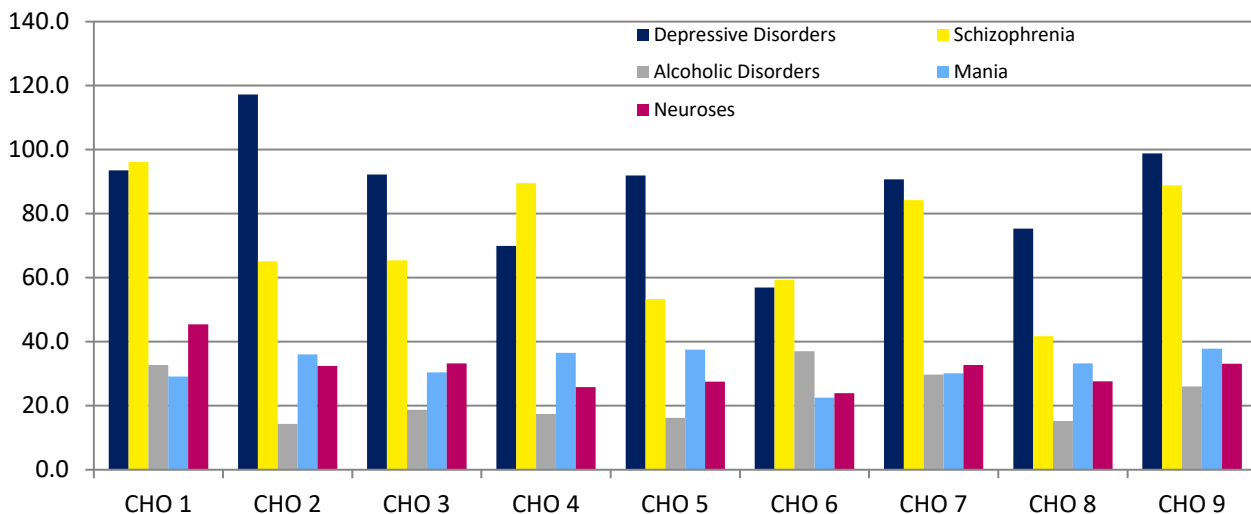


Figure 3: All and first involuntary admissions by CHO area. Ireland 2018. Rates per 100,000 total population

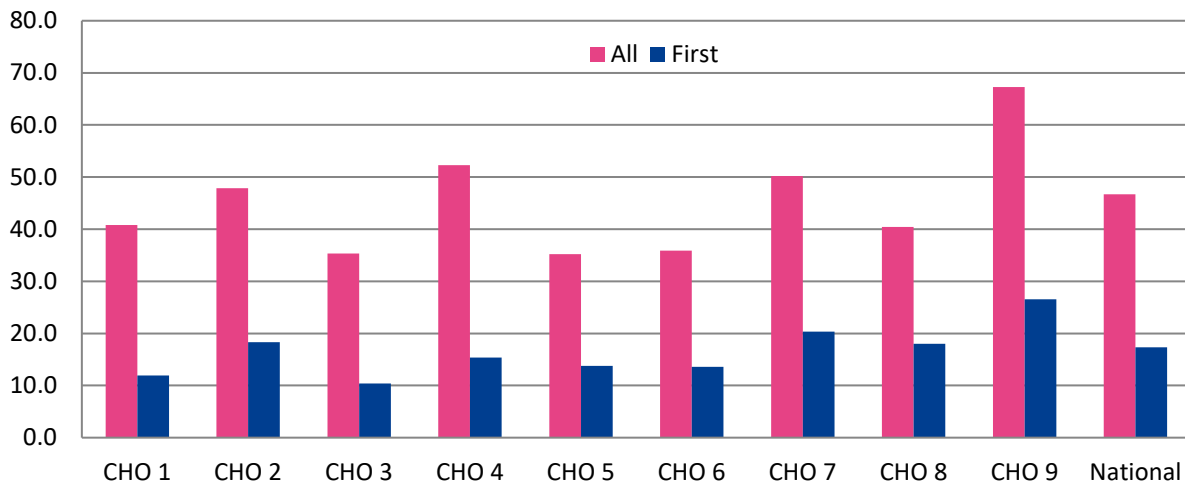
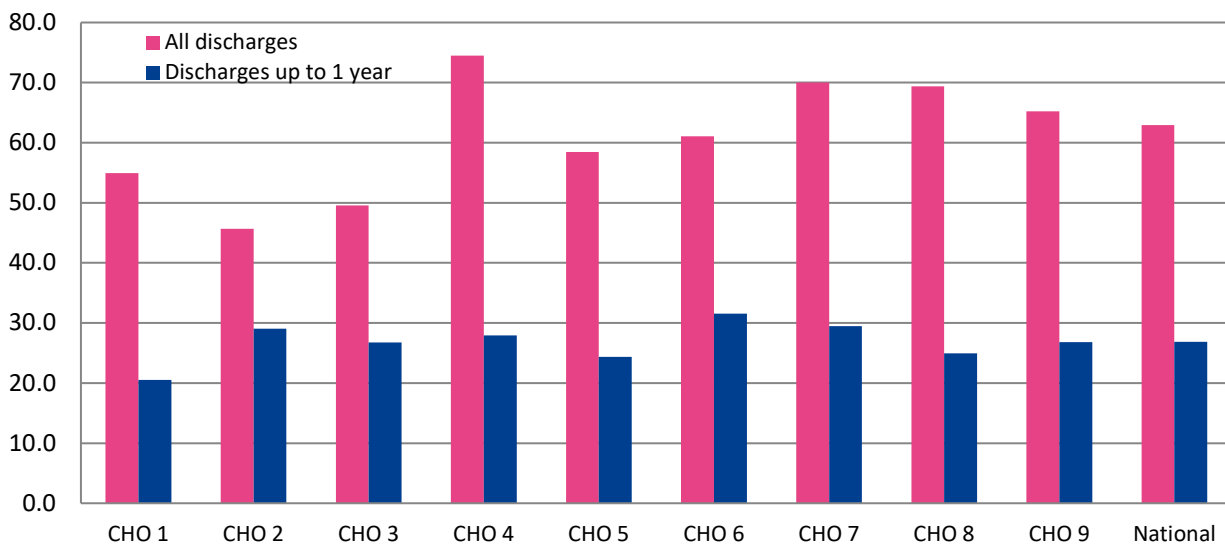


Figure 4: Average length of stay (days) for all discharges and discharges up to 1 year by CHO area. Ireland 2018.



Contact details for queries regarding this bulletin or the NPIRS:
 Antoinette Daly
 T: +353 1 2345 142
 E: adaly@hrb.ie

Health Research Board
 Grattan House
 67-72 Lower Mount Street
 Dublin 2
 www.hrb.ie

