

# National Psychiatric In-patient Reporting System (NPIRS) – CHO 1 Bulletin

## Introduction

This bulletin is a synopsis of data for CHO 1 from the NPIRS for 2018 and that reported in *Activities of Irish Psychiatric Units and Hospitals 2018 Main Findings* (Daly and Craig 2019). The address from which a person was admitted was used to assign him/her to a CHO area and, thus, CHO area refers to the CHO area of residence of admissions. CHO 1 covers the counties of Donegal, Sligo, Leitrim, Cavan and Monaghan.

The rates reported below were calculated using the Census of Population 2016 (Central Statistics Office 2017) and all rates are per 100,000 total population. It was not possible to calculate rates for socio-economic groups for each of the CHO areas and, thus, proportions are presented for socio-economic group.

## All and first admissions

There were 1,499 admissions for CHO 1 in 2018, a rate of 380.1 per 100,000 (Table 1). Admissions for CHO 1 accounted for 9% of all admissions to psychiatric units and hospitals in 2018. There were 434 first admissions, a rate of 110.1 per 100,000. Re-admissions (1,065) accounted for 71% of all admissions, representing a rate of 270.1 per 100,000.

## Gender and age

Fifty-three per cent of all admissions from CHO1 were male, with males also having a higher rate of admission, at 405.3 per 100,000 compared with 355.1 for females (Table 1). Males similarly had a higher rate of first admissions, at 126.6 per 100,000 compared with 93.6 for females.

**Table 1: CHOs. All and first admissions. Gender. Ireland 2018. Rates per 100,000 total population**

	All			First		
	Male	Female	Total	Male	Female	Total
CHO 1	405.3	355.1	380.1	126.6	93.6	110.1
CHO 2	327.4	295.6	311.4	129.7	94.3	111.9
CHO 3	328.7	326.9	327.8	117.9	109.1	113.5
CHO 4	382.5	357.8	370.0	130.8	112.1	121.3
CHO 5	407.2	340.2	373.5	164.4	125.1	144.6
CHO 6	302.1	325.9	314.3	86.0	81.5	83.7
CHO 7	348.8	387.8	368.6	140.8	140.3	140.5
CHO 8	334.5	326.7	330.6	163.7	128.6	146.0
CHO 9	397.5	406.9	402.3	143.3	135.9	139.5
<b>Total</b>	<b>362.0</b>	<b>352.2</b>	<b>357.0</b>	<b>136.8</b>	<b>117.1</b>	<b>126.8</b>

The 20–24 year age group had the highest rate of all admissions for CHO 1, at 792.0 per 100,000, followed by the 18–19 year age group, at 644.1, and the 25–34 year age group, at 621.4. The 75 year and over age group had the lowest rate of all admissions, at 258.7 per 100,000.

The 20–24 year age group had the highest rate of first admissions in CHO 1, at 374.9 per 100,000, followed by the 18–19 year age group, at 337.9, and the 25–34 year age group, at 189.0. The 75 year and over age group had the lowest rate of first admissions, at 87.6.

Age groups were condensed into two groups: under 45 years and 45 years and over. The 45 year and over age group had the highest rate of admissions in all CHO areas, with rates ranging from 536.1 per 100,000 in CHO 9 to 374.6 in CHO 2 (Figure 1). The rate of admission for the 45 year and over group in CHO 6 (451.8) and CHO 7 (533.6) was almost twice that of the under 45 year group.

**Marital status**

Single persons accounted for almost 64% of all and 59% of first admissions for CHO 1; married persons accounted for 22% of all and 23% of first admissions; widowed persons accounted for

3% of all and 4% of first admissions and divorced persons accounted for 3% of all and 3% of first admissions.

**Socio-economic group**

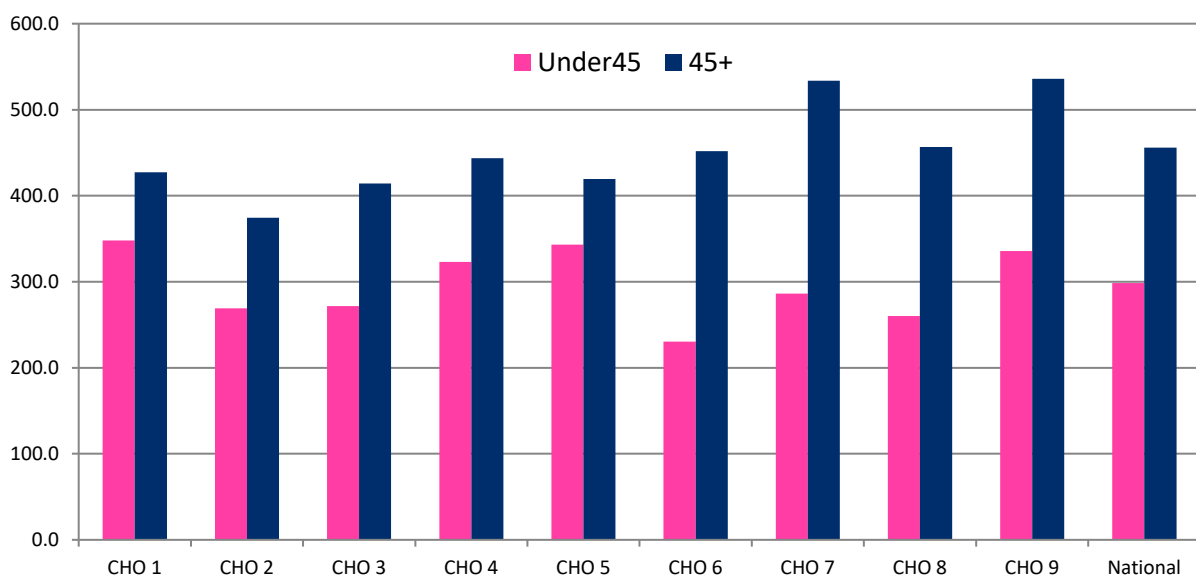
Ten per cent of all admissions had non-manual occupations, 6% were semi-skilled, 5% were lower professionals and a further 5% were manual skilled. However, it is worth noting that 62% of returns for CHO 1 did not specify an occupation, making assignment to a socio-economic group impossible. Proportions for first admissions were somewhat similar.

**Diagnosis**

Depressive disorders accounted for 25% of all admissions and 30% of first admissions for CHO 1; schizophrenia accounted for 25% of all and 15% of first admissions; and neuroses accounted for 12% of all and almost 21% of first admissions.

All admission rates in CHO 1 were highest for schizophrenia, at 96.1 (Figure 2) while first admission rates were highest for depressive disorders, at 33.0 per 100,000. Depressive disorders had the second-highest rate of all admissions in CHO 1, at 93.6, followed by neuroses, at 45.4. Neuroses had the second-highest rate of first admissions in CHO 1, at 22.6 per 100,000, followed by schizophrenia, at 16.5.

**Figure 1: All admissions by age category by CHO area. Ireland 2018. Rates per 100,000 total population**



## Legal status

Involuntary admissions accounted for 11% of all and 11% of first admissions for CHO 1. The rate of all involuntary admissions in CHO 1 was 40.8, while that for first admissions was 11.9 per 100,000, the third-highest rate amongst all CHO areas (Figure 3).

## Hospital type

Sixty-four per cent of admissions for CHO 1 were to general hospital psychiatric units, almost 27% were to psychiatric hospitals/continuing care units and 9% were to independent/private and private charitable centres.

## Discharges

There were 1,497 discharges (1,487 discharges and 10 deaths) for CHO 1 in 2018. Thirty-nine per cent of discharges occurred within one week of admission, 19% occurred within one to two weeks and 18% occurred within two to four weeks of admission. Ninety-six per cent of discharges occurred within three months of admission. This is similar to the pattern observed nationally.

Discharges for CHO 1 accounted for 9% of all discharges and 8% of all in-patient days. The average length of stay for all discharges for CHO 1 was 54.9 days (median 10 days) (Figure 4). This compares with the national average of 62.9 days (median 15 days).

When discharges with a length of stay of one year or more were excluded, discharges for CHO 1 accounted for 9% of discharges and 7% of in-patient days. The average length of stay for discharges, excluding those with a length of stay of one year or more, was 20.5 days (median 10 days), the shortest average length of stay for all CHO areas (excluding non-residents).

## References

- Central Statistics Office (2017) Census of Population 2016, [www.cso.ie](http://www.cso.ie).
- Daly A and Craig S (2019) *Activities of Irish Psychiatric Units and Hospitals 2018*. HRB Statistics Series 39. Dublin: Health Research Board.

**Figure 2: Admissions for selected diagnostic groups by CHO area. Ireland 2018. Rates per 100,000 total population**

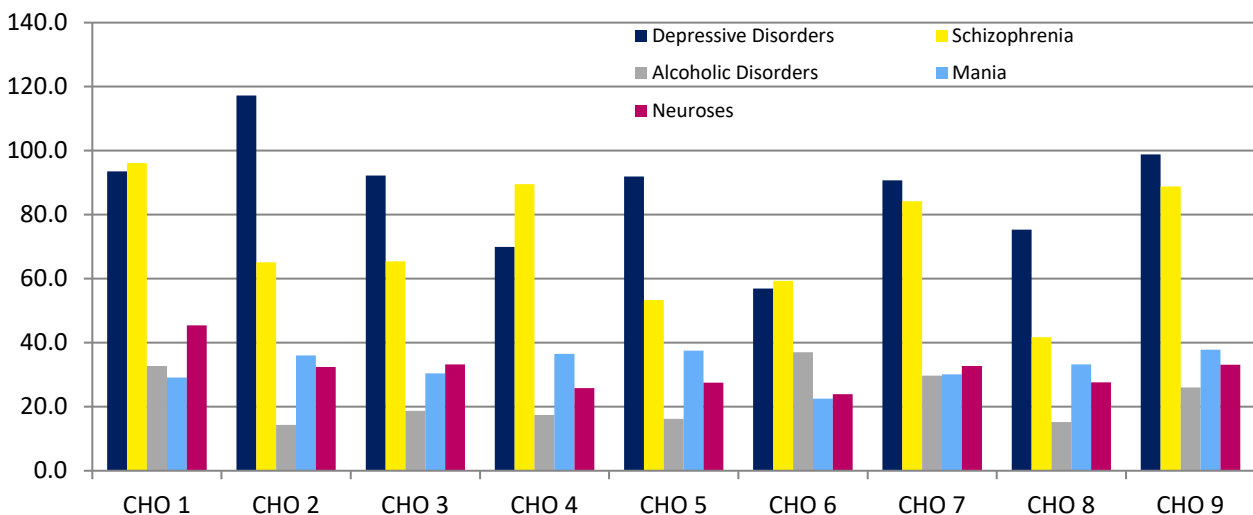


Figure 3: All and first involuntary admissions by CHO area. Ireland 2018. Rates per 100,000 total population

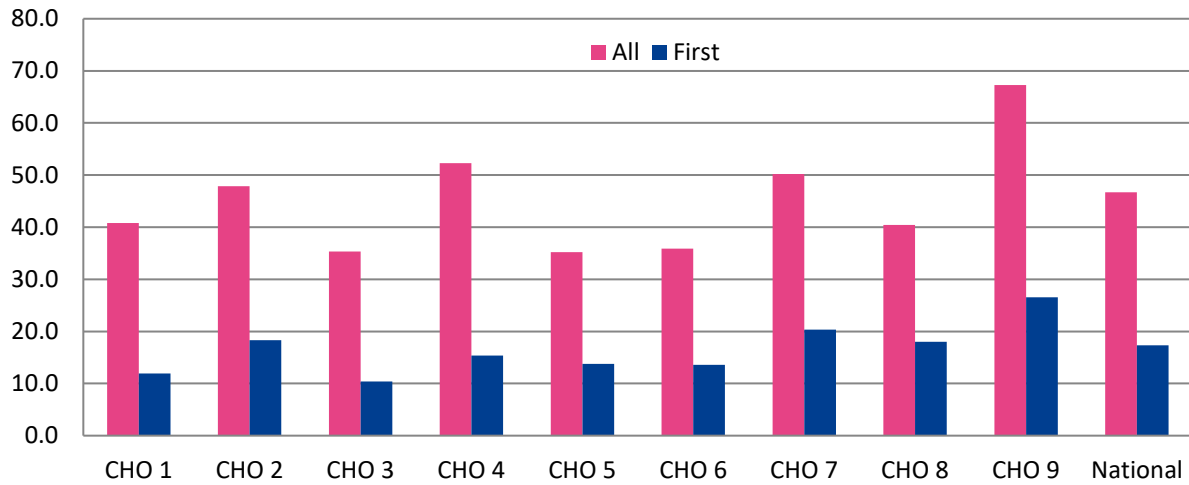
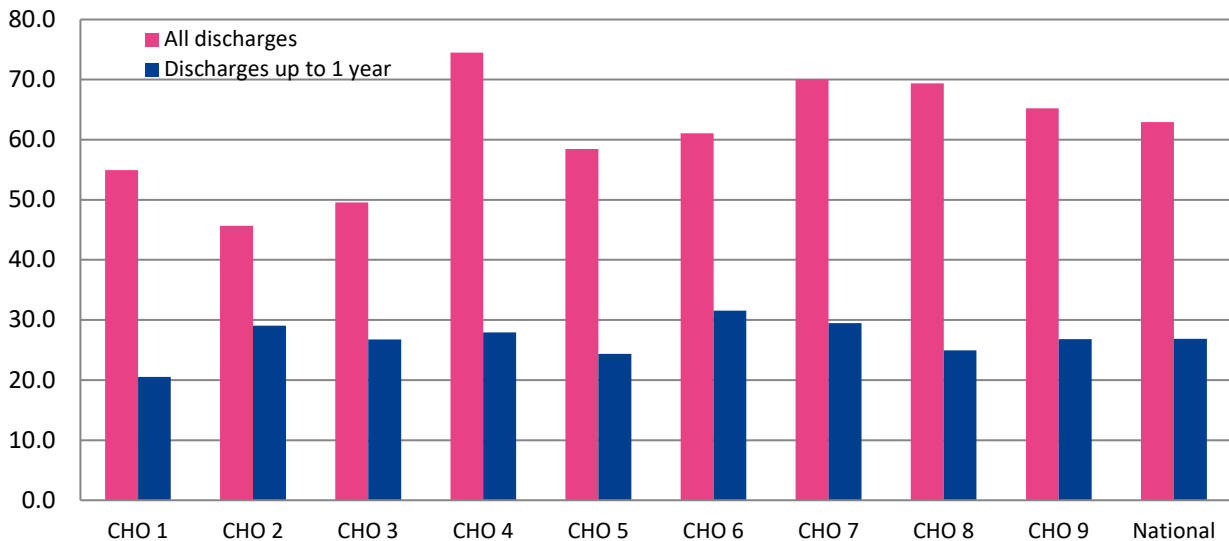


Figure 4: Average length of stay (days) for all discharges and discharges up to 1 year by CHO area. Ireland 2018.



Contact details for queries regarding this bulletin or the NPIRS:  
 Antoinette Daly  
 T: +353 1 2345 142  
 E: adaly@hrb.ie

**Health Research Board**  
 Grattan House  
 67-72 Lower Mount Street  
 Dublin 2  
 www.hrb.ie

