

# National Psychiatric In-Patient Reporting System (NPIRS) HSE West Bulletin 2007

December 2008

As part of our national reporting role in relation to mental health service activity, the Mental Health Research Unit (MHRU) of the Health Research Board (HRB) presents data from the National Psychiatric In-Patient Reporting System (NPIRS) for HSE West for 2007. The MHRU would like to thank services for providing quarterly returns – your cooperation has resulted in timelier reporting. We look forward to your continued support in the future.

Rosalyn Moran  
Head of MHRU

## Introduction

This bulletin is a synopsis of data for HSE West from the NPIRS for 2007 and that reported in *Activities of Irish Psychiatric Units and Hospitals 2007* (Daly *et al.* 2007). The *Activities* report presents information on all and first admissions nationally, regionally (by HSE area) and locally, by individual service, by county and by hospital type.

The rates reported below were calculated using the Census of Population 2006 (Central Statistics Office, 2007) and all rates are per 100,000 total population. Rates were not available for socio-economic groups for each of the HSE areas.

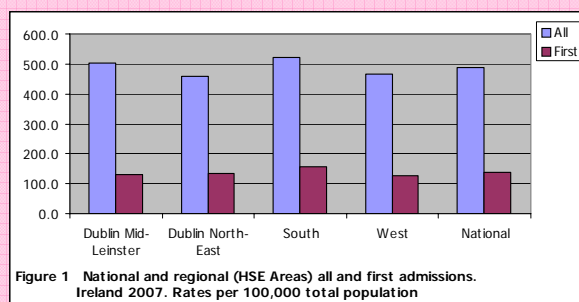
There are differences in data reported in this bulletin and data reported by the Mental Health Commission (2008) due to differences in data coverage and different methods of assigning records to a HSE area. In addition, the HRB does not record Admission Orders to detain Voluntary Patients and thus there are differences in legal status. Please consult *Activities of Irish Psychiatric Units and Hospitals 2007* for further clarification.

## All and first admissions 2007 – HSE West

There were 4,726 admissions for HSE West in 2007, a rate of 466.2 per 100,000 (Figure 1). This was the second-lowest rate of all admissions among all HSE areas. There were 1,289 first admissions, a rate of 127.2 per 100,000, the lowest rate among all HSE areas. Re-admissions (3,437) accounted for 73% of all admissions, representing a rate of 339.1 per 100,000.

## Gender and age

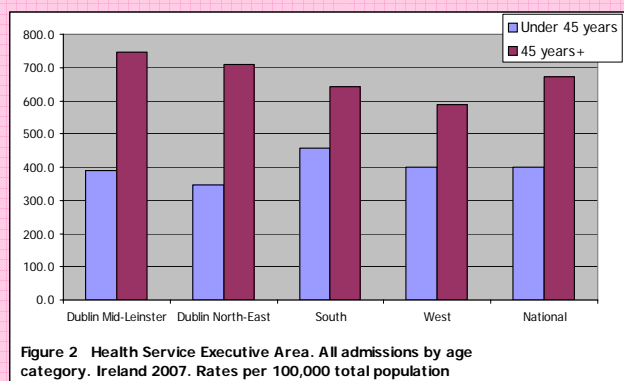
Males accounted for 52% of all admissions, a rate of 479.7. The rate of first admissions for males in HSE West (141.0) was the second-highest rate for first admissions for males among HSE areas.



The 35–44-year age group had the highest rate of all admissions in HSE West, at 753.2 per 100,000. The 45–54-year age group had the second-highest rate, at 704.5, followed by the 25–34-year age group, at 630.8. The under 18-year age group had the lowest rate of admission, at 24.2.

The 18–19-year age group had the highest rate of first admissions in HSE West, at 244.7, followed by the 20–24-year age group, at 211.4, and the 25–34-year age group, at 192.6. The under 18-year age group had the lowest rate of first admission, at 16.3, the highest rate for this age group among all HSE areas.

Age groups were condensed into two groups: under 45 years and 45 years and over. The 45 year and over age group had the highest rate of admission in all HSE areas, with rates ranging from 744.8 per 100,000 in Dublin Mid-Leinster to 589.3 in HSE West (Figure 2). The rate of admission for the 45 year and over age group in HSE West was 589.3, while that for the under 45 year age group was 399.8.



## Marital status

Single persons accounted for 57% of all admissions and 56% of first admissions; married persons accounted for 26% of all and 28% of first admissions; widowed persons accounted for 5% of all and 5% of first admissions; and divorced persons accounted for 2% of all and 2% of first admissions.

Divorced persons had the highest rate of all (622.3) and first admissions (172.5) in HSE West. Married persons had the lowest rate of all (316.2) and first admissions (93.4).

## Socio-economic group

Thirteen per cent of all admissions had non-manual occupations, 13% were unskilled, 9% were manual skilled and 7% were lower professionals. However, it is worth noting that 39% of returns for HSE West did not specify an occupation, making assignment to a socio-economic group impossible.

## Diagnosis

Depressive disorders accounted for 31% of all admissions and 36% of first admissions for HSE West; schizophrenia accounted for 19% of all and 12% of first admissions; while alcoholic disorders accounted for 14% of all and 14% of first admissions.

All and first admission rates in HSE West were highest for depressive disorders, at 143.6 and 46.0 per 100,000, respectively (Figure 3). Schizophrenia had the second-highest rate of all admissions in HSE West, at 90.2, followed by mania, at 66.9. Alcoholic disorders had the second-highest rate of first admissions in HSE West, at 17.7, followed by schizophrenia, at 15.6.

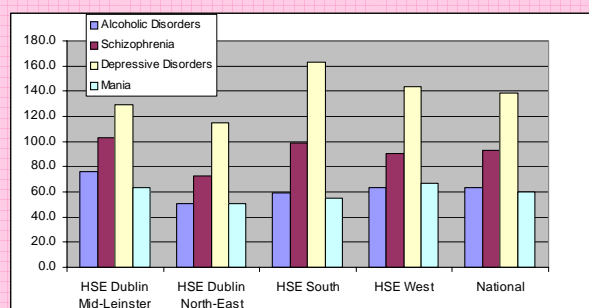


Figure 3 National and regional (HSE Areas) admissions for selected diagnostic groups. Ireland 2007. Rates per 100,000 total population

## Legal status

Non-voluntary admissions accounted for 8% of all and 9% of first admissions. The rate of non-voluntary all admissions was 37.4, while that for first admissions was 11.3, the lowest among all HSE areas (Figure 4).

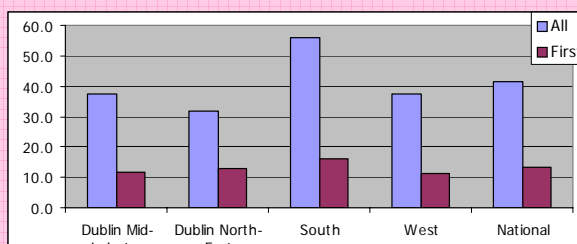


Figure 4 Health Service Executive Area. All and first non-voluntary admissions. Ireland 2007. Rates per 100,000 total population

## Discharges (including deaths)

There were 4,773 discharges for HSE West in 2007.

Thirty per cent of discharges occurred within one week of admission, 21% occurred within one to two weeks and 21% occurred within two to four weeks of admission. Ninety-five per cent of discharges occurred within three months of admission. This is similar to the pattern observed nationally.

Discharges for HSE West accounted for 23% of all discharges nationally and 21% of in-patient days. The average length of stay was 23.6 days (median 13 days), the shortest among all HSE areas.

## References

Central Statistics Office (2007) *Census 2006. Volume 1 – Population Classified by Area*. Dublin: Stationery Office.

Daly A, Walsh D and Moran R (2007) *Activities of Irish Psychiatric Units and Hospitals 2007*. Dublin: Health Research Board.

Mental Health Commission (2008) *Annual Report including the Report of the Inspector of Mental Health Services 2007. Book One*. Dublin: Mental Health Commission.

Contact details for queries regarding this bulletin or the NPIRS:

**Antoinette Daly**

t +353 1 2345 142 or + 353 45 531246

e [adaly@hrb.ie](mailto:adaly@hrb.ie)